

RETAIL/SHOWROOM FOR LEASE

CORONA BUILDING

608 2nd Avenue, Seattle, WA 98104



For more information please contact:

LAURA MILLER

laura@gibraltarusa.com

206.351.3573



608 2ND AVENUE, SEATTLE, WA 98104

CORONA BUILDING



PROPERTY HIGHLIGHTS

- Highly visible Pioneer Square retail space located on the ground level of the Corona Building, a mixed-use building consisting of 20 high-end loft apartments above commercial retail
- Incredible foot traffic and easy access to public transportation; one block north of the historic Smith Tower, adjacent to Courtyard by Marriott, and en-route to Lumen Field and T-Mobile Park
- Surrounding businesses include Seattle Flowers, Rojo's Mexican Food, Collins Pub, Gary Manuel Salon, Shawn O'Donnell's, and TAT's Delicatessen
- Easy access to parking located across the street from Butler Garage
- Modern space features great natural light, high ceilings, kitchenette, large wood-framed storefront windows, and ADA restroom
- Ideal for retail, showroom, gallery, architecture/design firm, or other service-related use
- HVAC, electrical and building safety systems updated in 2000
- 2,323 SF
- Available October 1, 2023
- Rental Rate \$22.50/SF plus 2023 NNN \$10.15/SF = \$6,320.50 per month



100

TRANSIT SCORE



98

WALK SCORE



88

BIKE SCORE



56,780

TOTAL POPULATION



32,640

TOTAL HOUSEHOLDS



\$79,167

MEDIAN INCOME

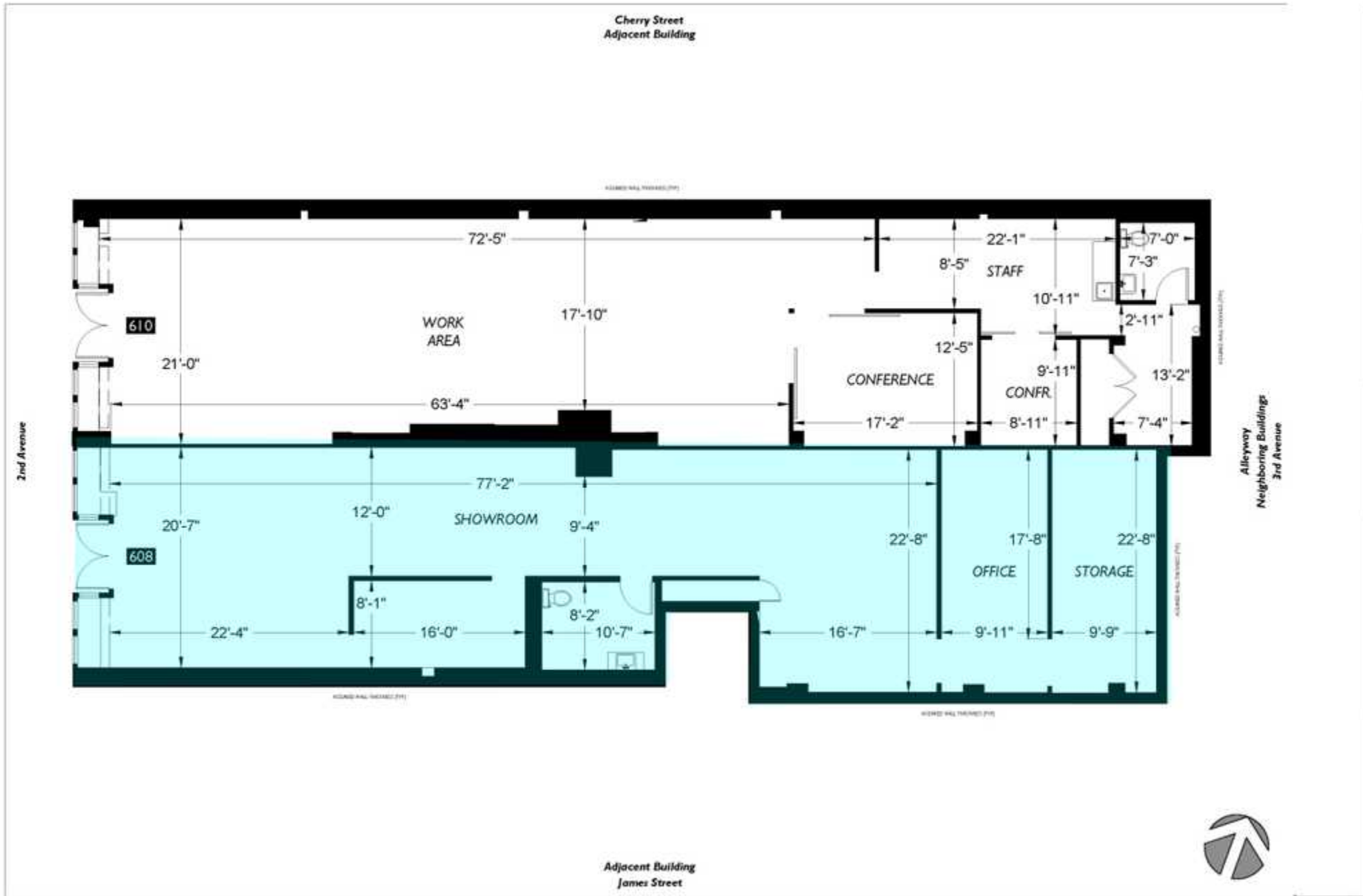
* Demographic data derived from 2023, 1 mile radius

608 2ND AVENUE, SEATTLE, WA 98104

CORONA BUILDING



CORONA BUILDING



608 2ND AVENUE, SEATTLE, WA 98104

CORONA BUILDING

