

18,720 SF



Industrial Space For Lease

Prologis Park Sumner



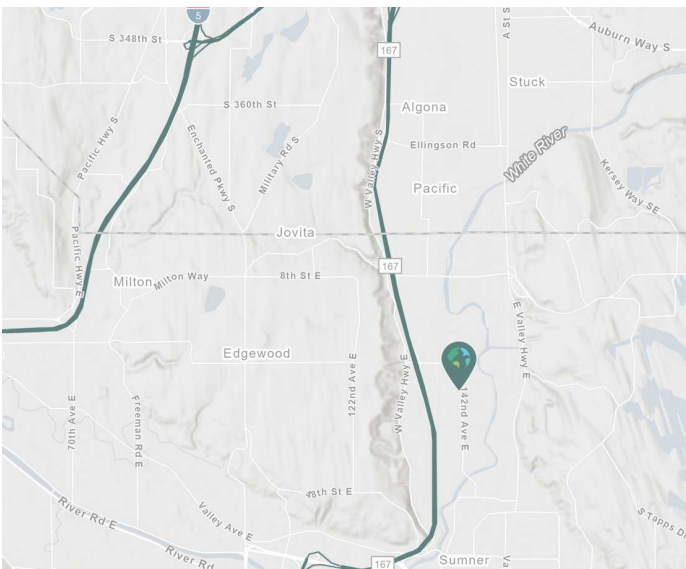
3104 142nd Avenue East
Suites 105-107
Sumner, WA 98134

LOCATION

- Located in Prologis Park Sumner
- Visibility to 142nd Street
- Direct access to SR-167 via 24th Street
- End cap space

FACILITY

- 18,720 total SF available
- 3,090 SF office
- 9 dock high doors
- 3 drive in doors
- 24' clear height
- Spacious truck maneuverability
- Reinforced concrete aprons
- ESRF sprinkler



Prologis Essentials: your single-source service for efficient move-in and operations at [prologisessentials.com](https://www.prologisessentials.com)

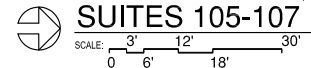
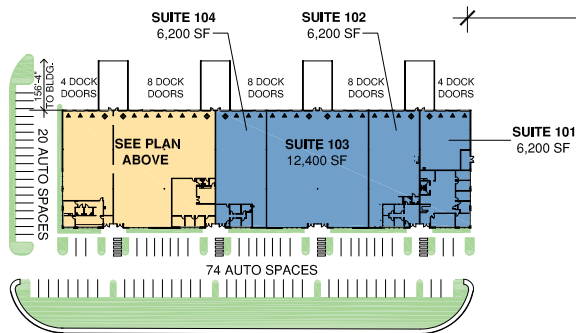
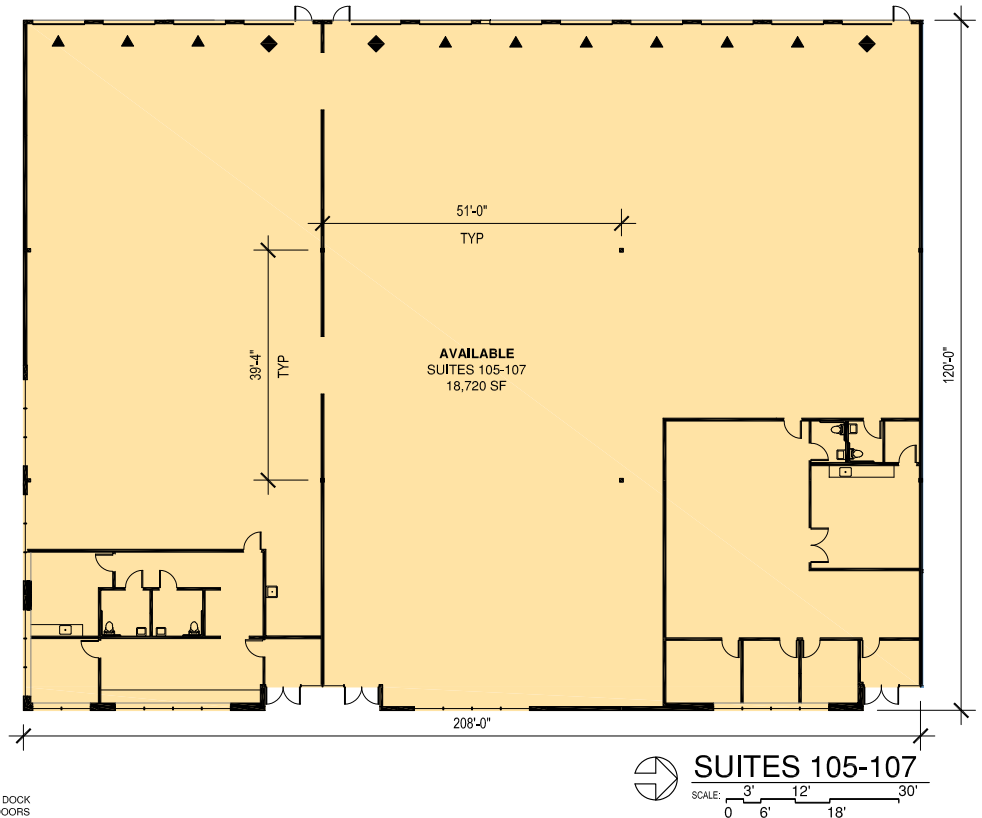
www.prologis.com

18,720 SF



Industrial Space For Lease

Prologis Park Sumner



142ND AVE. EAST

 **SITE PLAN**
SCALE: NOT TO SCALE



CBRE, Inc.

John Gilliland
john.gilliland@cbre.com
ph +1 206 422 2745
cell +1 206 226 7930
1420 5th Avenue
Suite 3800
Seattle, WA 98101

CBRE, Inc.

John Sullivan
john.sullivan@cbre.com
ph +1 206 422 2744
cell +1 206 719 2902
1420 5th Avenue
Suite 3800
Seattle, WA 98101

Prologis

Mark Roddy
mroddy@prologis.com
ph +1 206 414 7617
cell +1 253 514 0299
33930 Weyerhaeuser Way S
Suite 100
Federal Way, WA 98001

Prologis Essentials: your single-source service for efficient move-in and operations at prologisessentials.com

No warranty or representation, expressed or implied, is made as to the accuracy of the information contained herein, and same is submitted subject to error and omissions.