



Colliers

Suite 310
4,480 SF

Suite 340
2,539 SF

For Lease

Jared Zebe

208 709 7311
jared.zebe@colliers.com

Don Zebe

208 403 1973
don.zebe@colliers.com

Mike Zebe

208 705 6453
mike.zebe@colliers.com

2043 E Center Street
Pocatello, Idaho 83201
208 951 2100
colliers.com/idaho

Varsity Square

310 & 340 S 4th Ave | Pocatello, ID

Highlights:

- 2 Spaces Available
 - Suite 310 - Large showroom, 3 offices, ADA, restroom and delivery door
 - Suite 340 - 7 offices, large conference room
- Ample shared parking
- Common area restrooms
- Centrally located
- Easy access into site
- Near ISU, restaurants, shopping, grocery stores and the County Courthouse

Accelerating success.

For Lease

Property Information

Property Type	Retail/Office
Parking	Ample shared
Access	Key with broker
Lease Type	NNN
Lease Rate	\$14 PSF NNN

Space Available

Suite	Size	Rate
310	4,480 SF	\$14.00 PSF NNN
340	2,539 SF	\$14.00 PSF NNN

Demos

	1 Miles	3 Miles	5 Miles
Population	12,281	46,744	74,151
Households	5,386	18,618	28,343
Avg. Income	\$48,455	\$59,485	\$66,472



Suite 310



Suite 310



Suite 310



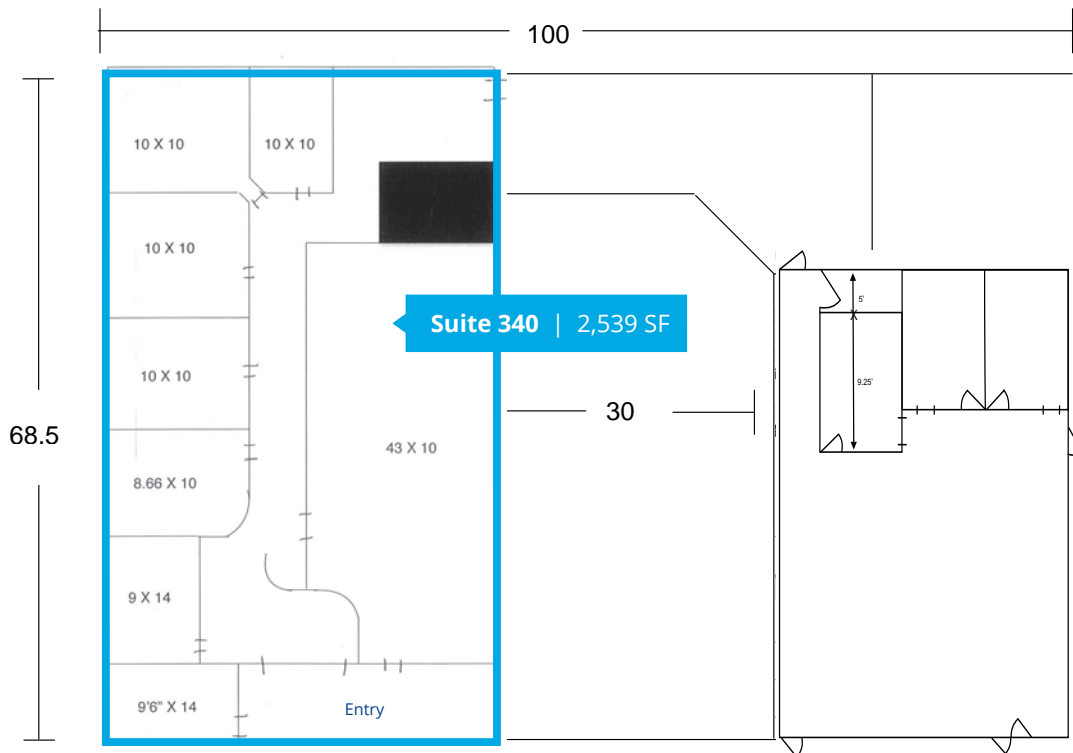
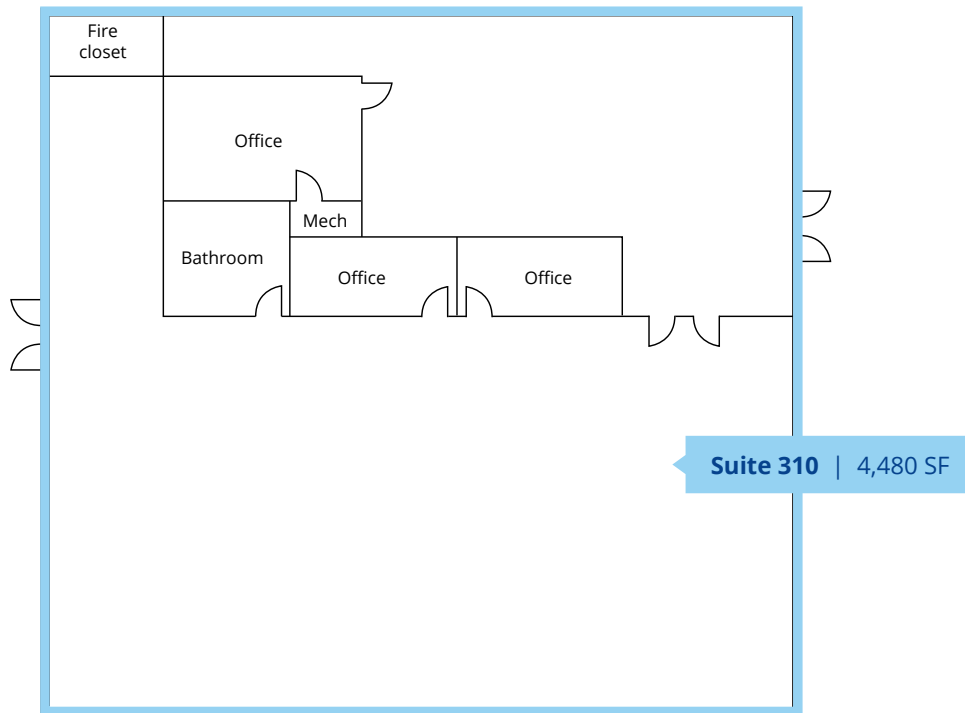
Suite 340



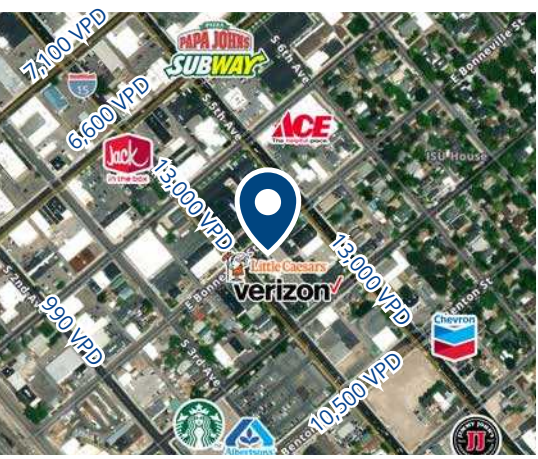
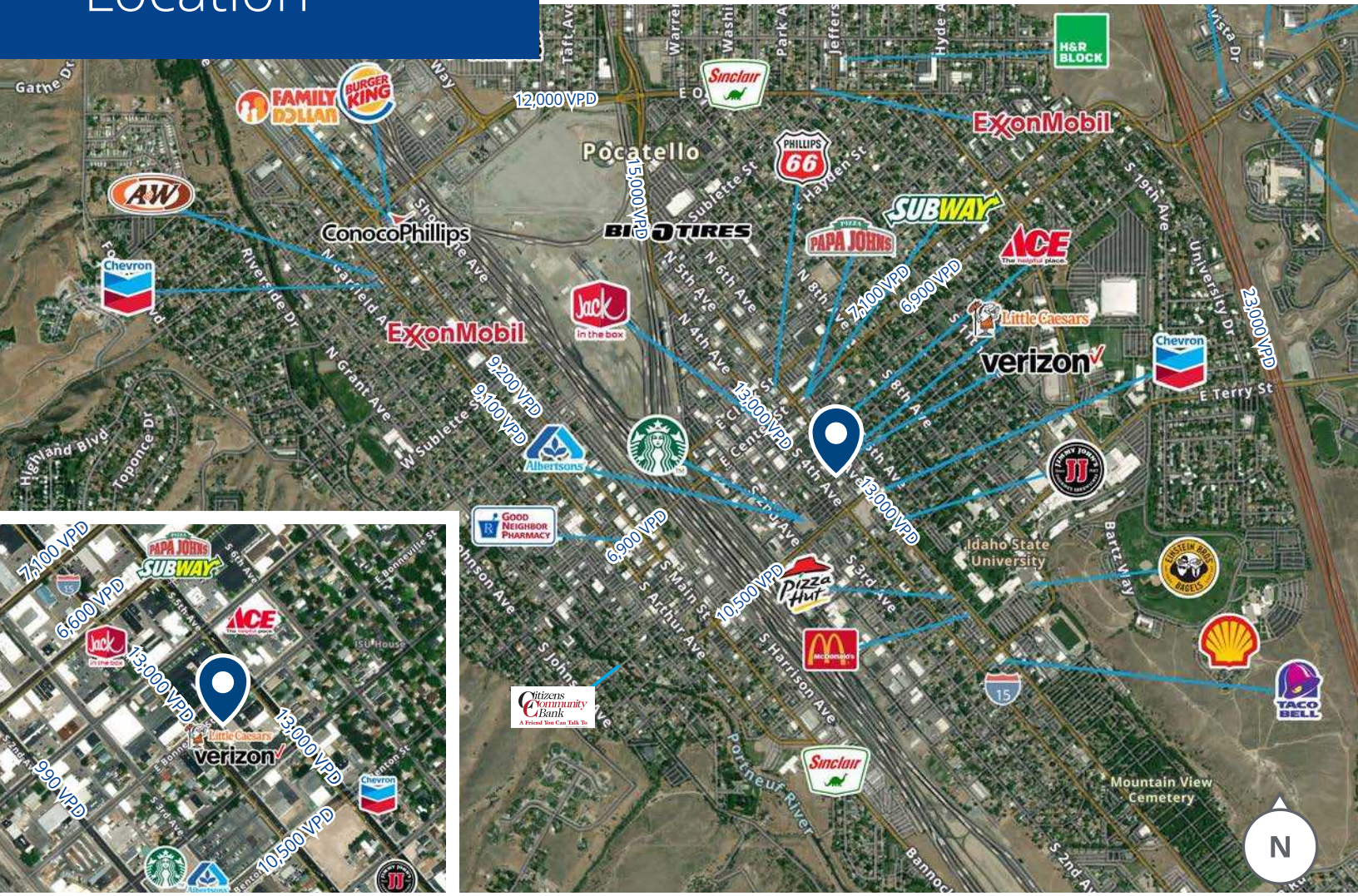
Suite 340



Floor Plans



Location



2043 E Center Street
 Pocatello, Idaho 83201
 208 951 2100
 colliers.com/idaho

This document has been prepared by Colliers for advertising and general information only. Colliers makes no guarantees, representations or warranties of any kind, expressed or implied, regarding the information including, but not limited to, warranties of content, accuracy and reliability. Any interested party should undertake their own inquiries as to the accuracy of the information. Colliers excludes unequivocally all inferred or implied terms, conditions and warranties arising out of this document and excludes all liability for loss and damages arising therefrom. This publication is the copyrighted property of Colliers and/or its licensor(s). © 2023. All rights reserved. This communication is not intended to cause or induce breach of an existing listing agreement. Colliers Portneuf Valley, LLC.