



## Hazelwood Square Development

10219 W. Airway Heights - Building TWO  
Airway Heights, Washington 99224

### Property Highlights

- Located in the Fastest Growing Region in the State of Washington
- Between Hayford Road and City of Spokane (Corner of Sunset Highway and Hazelwood Road)
- Excellent Visibility
- Pylon Sign Availability on Highway
- High Traffic Counts
- Excellent Retail/Medical/Office Location
- Close to Spokane County's Large Employers Fairchild Airforce Base, Northern Quest Resort & Casino, Spokane International Airport, and Spokane Tribal Casino
- Space Can be Occupied as One Space or Multiple Lease Spaces

### Future Building Features

- 4,452 SF ± Total Building Size
- Drive Thru Possible

**Lease Rate: \$27.00 SF/yr (NNN)**

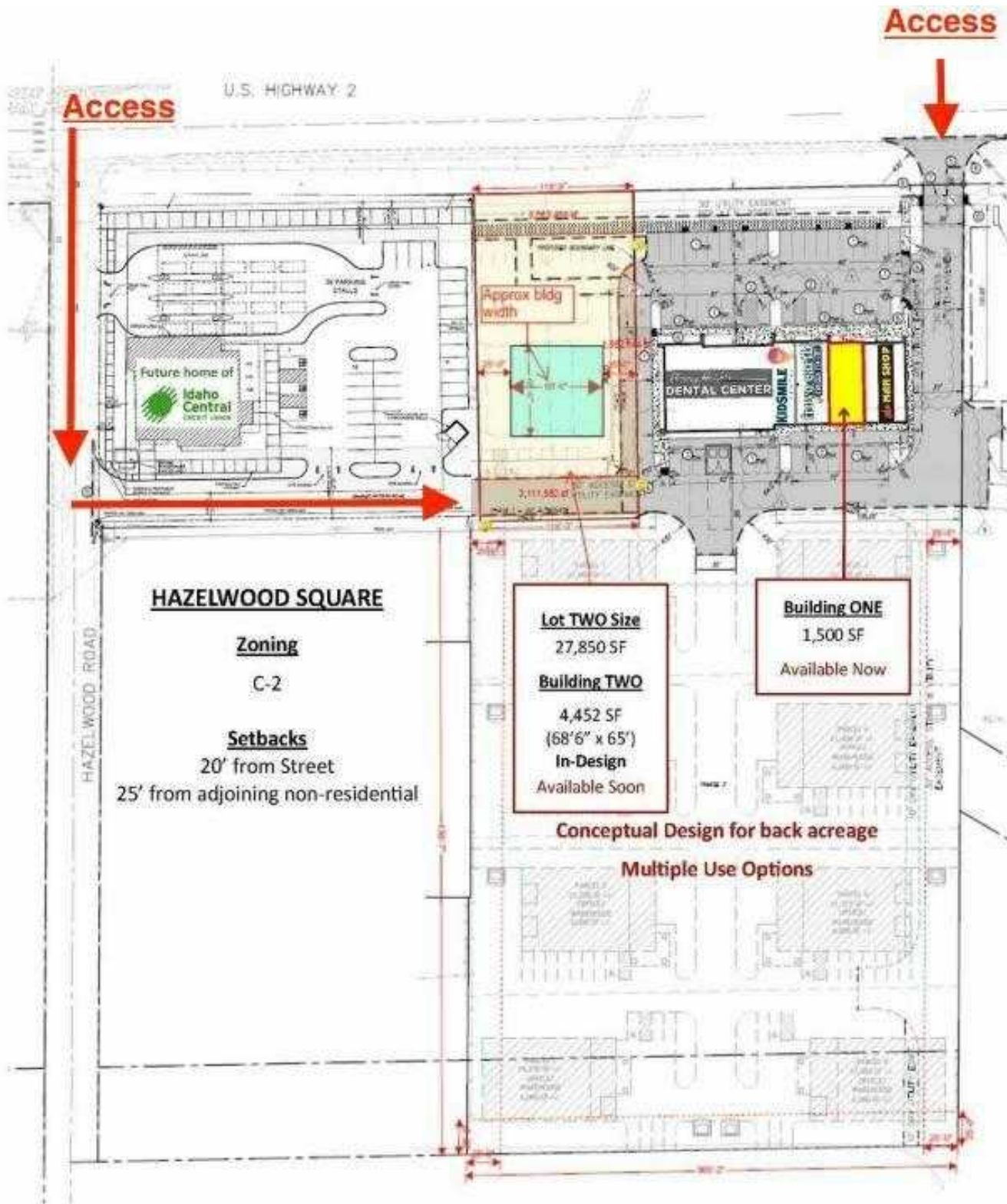
For more information

**Jesse Clark**

O: 509 622 3534 | C: 509 808 6244  
jesse.clark@naiblack.com

**Bryan Walker**

O: 509 622 3593 | C: 509 951 3669  
bwalker@naiblack.com



**HAZELWOOD SQUARE**

**Zoning**  
 C-2

**Setbacks**  
 20' from Street  
 25' from adjoining non-residential

**Lot TWO Size**  
 27,850 SF

**Building TWO**  
 4,452 SF  
 (68'6" x 65')  
 In-Design  
 Available Soon

**Building ONE**  
 1,500 SF  
 Available Now

**Conceptual Design for back acreage**

**Multiple Use Options**

