

For Lease

401 E 25TH ST

TACOMA, WA

25TH ST RETAIL & OFFICE



PRIME LOCATION IN DOME DISTRICT

Parking lot with 42 stalls

Backup generator

Renovated building located directly across from the newly redesigned Freighthouse Square Tacoma Rail Station for both Sounder Commuter Rail and Link Light Rail

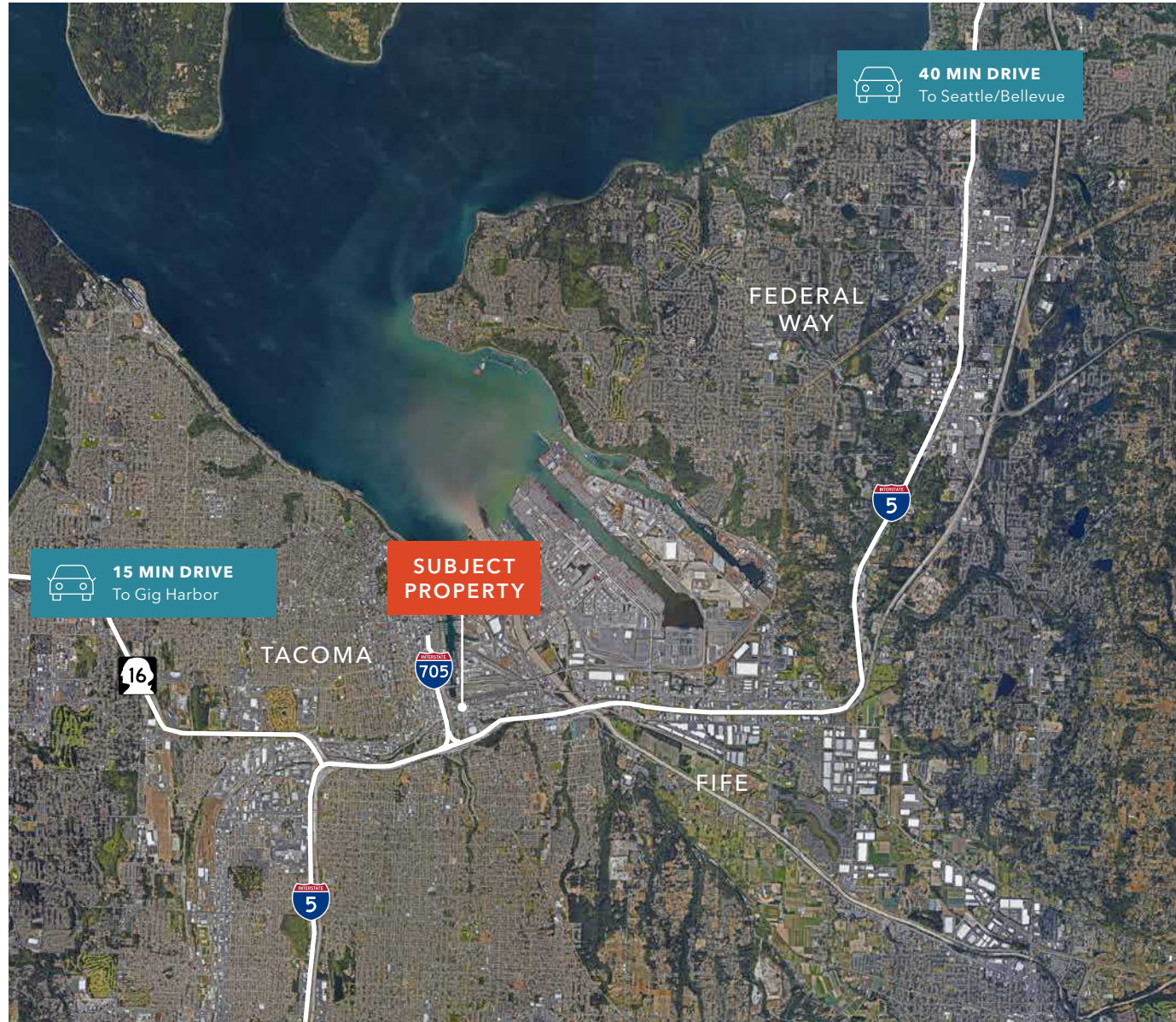
Immediate access to I-5, I-705, SR-509 and Port of Tacoma

40 MIN

SEATTLE & BELLEVUE CBD

15 MIN

GIG HARBOR





APARTMENT DEVELOPMENT

SOUND TRANSIT TACOMA DOME STADIUM

PROPOSED TRAX APARTMENTS

KOZ APARTMENTS

SUBJECT PROPERTY

PROPOSED MOUNT BAY APARTMENTS

APARTMENT DEVELOPMENT

APARTMENT DEVELOPMENT

TENANT PARKING



HOTEL MURANO

CONVENTION CENTER

COURTYARD MARRIOTT

TACOMA ART MUSEUM

UW TACOMA

MUSEUM OF GLASS

KOZ APARTMENTS

PACIFIC CHARTER SCHOOL

KOZ APARTMENTS

SUBJECT PROPERTY

SOUNDER STATION

LEMAY MUSEUM

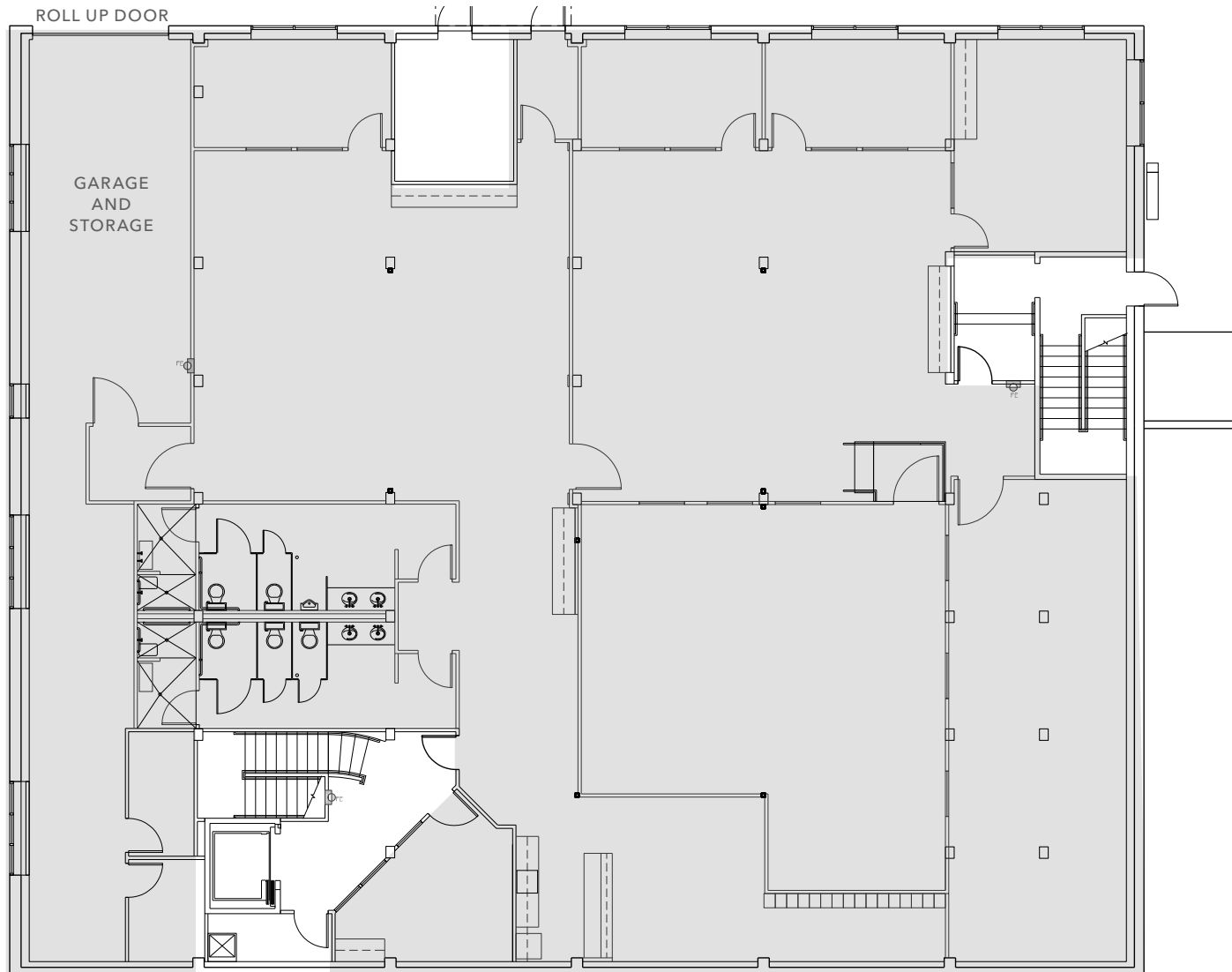
TACOMA DOME

1201 PACIFIC



Google earth

FIRST FLOOR



SUITE 101

AVAILABLE

±8,020

SF

\$22.00

PSF/YR, NNN

SECOND FLOOR



SUITE 201

AVAILABLE

±8,848

SF

\$24.00

PSF/YR, NNN

SUITE 204

AVAILABLE

±900

SF

\$28.00

PSF/YR, NNN

SUITE 205

AVAILABLE

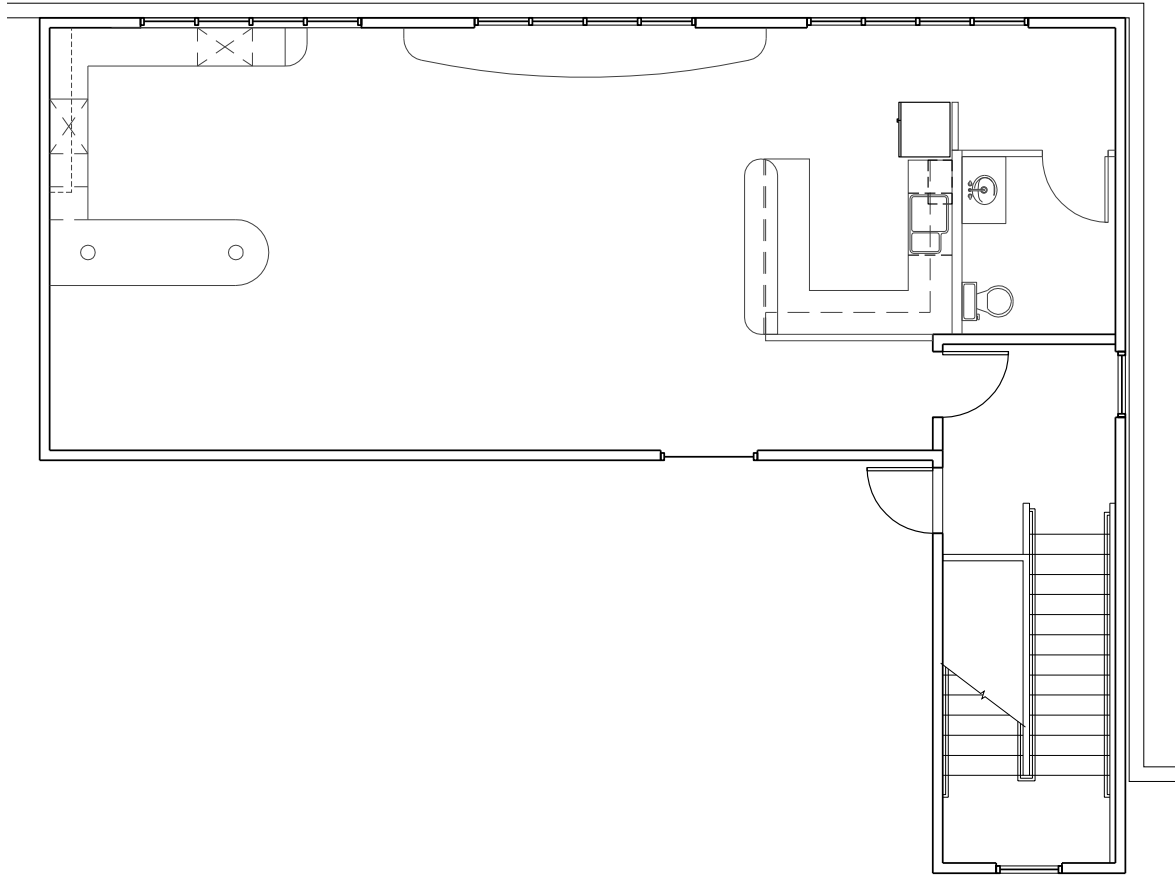
±2,203

SF

\$28.00

PSF/YR, NNN

PENTHOUSE APARTMENT



SUITE 301

AVAILABLE

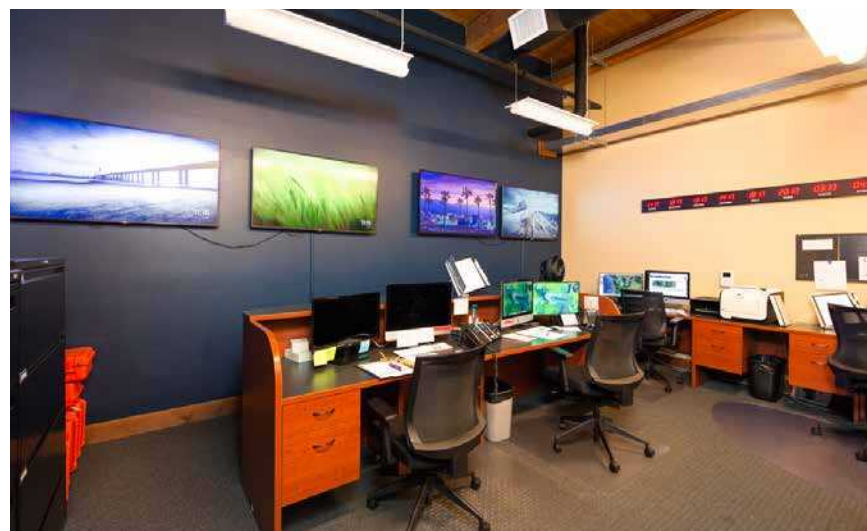
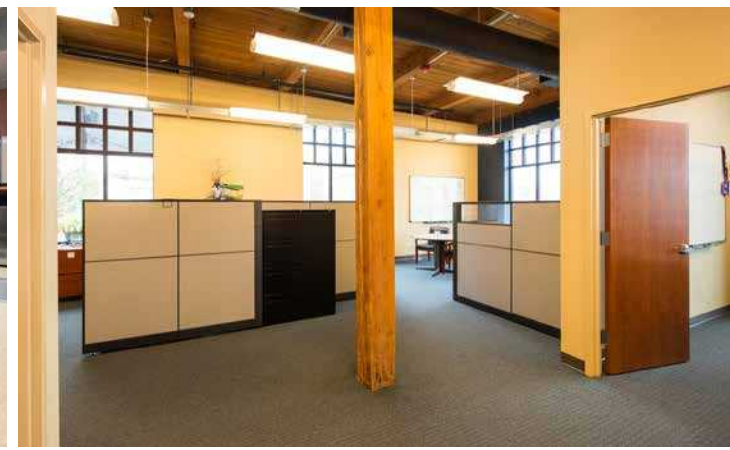
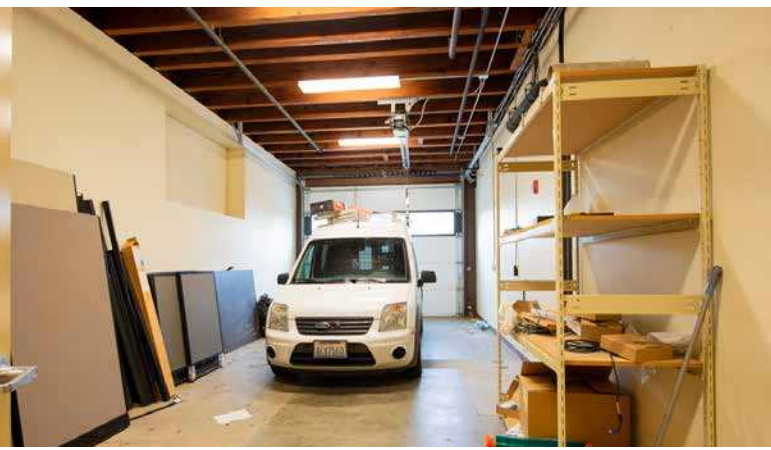
950 SF

AVAILABLE

\$35.00

PSF/YR, NNN

401 E 25th St

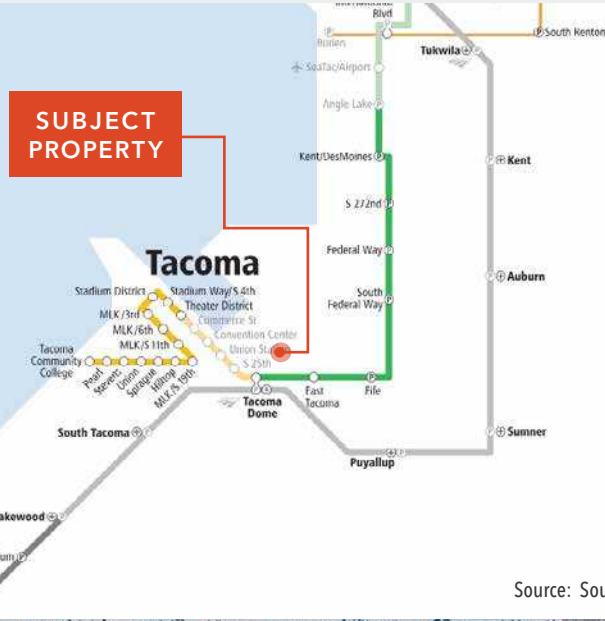


AVAILABLE FOR LEASE

KIDDER MATHEWS

SOUND TRANSIT MAPS

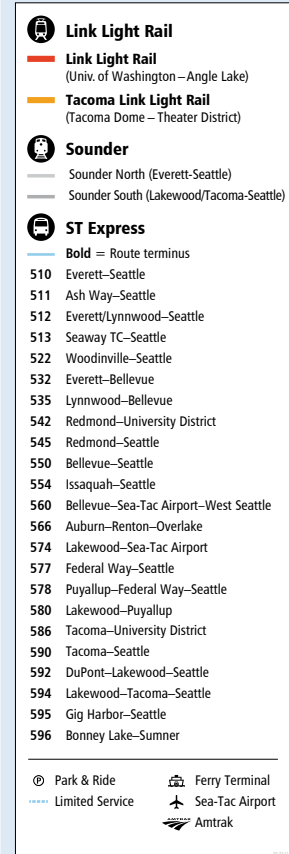
- The Property is located directly across from Sound Transit's Tacoma Dome Station, the busiest commuting hub in Pierce County
- Sounder Commuter Rail to Seattle, Tacoma's existing Link Light Rail and its future expansion to SeaTac Airport make this ground zero for new transit oriented development



Source: Sound Transit



Sound Transit System Map



Source: Sound Transit

401 E
25TH ST

EXCLUSIVELY LEASED BY

BEN NORBE

Kidder Mathews
253.722.1410
ben.norbe@kidder.com

DREW FRAME

Kidder Mathews
253.722.1433
drew.frame@kidder.com

WILL FRAME

Kidder Mathews
253.722.1412
will.frame@kidder.com

This information supplied herein is from sources we deem reliable. It is provided without any representation, warranty, or guarantee, expressed or implied as to its accuracy. Prospective Buyer or Tenant should conduct an independent investigation and verification of all matters deemed to be material, including, but not limited to, statements of income and expenses. Consult your attorney, accountant, or other professional advisor.

