

FOR LEASE HARBOR MARINA CORPORATE CENTER

1001-1021 SW KLUCKITAT WAY, SEATTLE, WA



For more information:

Bob Swain, CCIM
+1 425 586 5622
bswain@nai-psp.com

John Vernon
+1 425 586 5638
jvernon@nai-psp.com



PROPERTY OVERVIEW

HARBOR MARINA CORPORATE CENTER

1001 SW KLUCKITAT WAY, SEATTLE, WA 98134



Fantastic tenant amenities. Deli on site, storage/warehouse available, recreational moorage available, and access to West Seattle bike path.



Wide range of space solutions



Excellent location close to Downtown, West Seattle, Alki Beach, Georgetown, and SODO. Easy Access to I5 & SR 99. Adjacent to harbor container terminals.



Great views of the Duwamish Waterway



Flexible lease terms available



Free parking 2/1000 SF



Furnished suites available



Public transit with in 0.2 miles



Call for rates



Free parking!!!!



BUILDING LOCATIONS HARBOR MARINA CORPORATE CENTER

1001 SW KLINKITAT WAY, SEATTLE, WA 98134

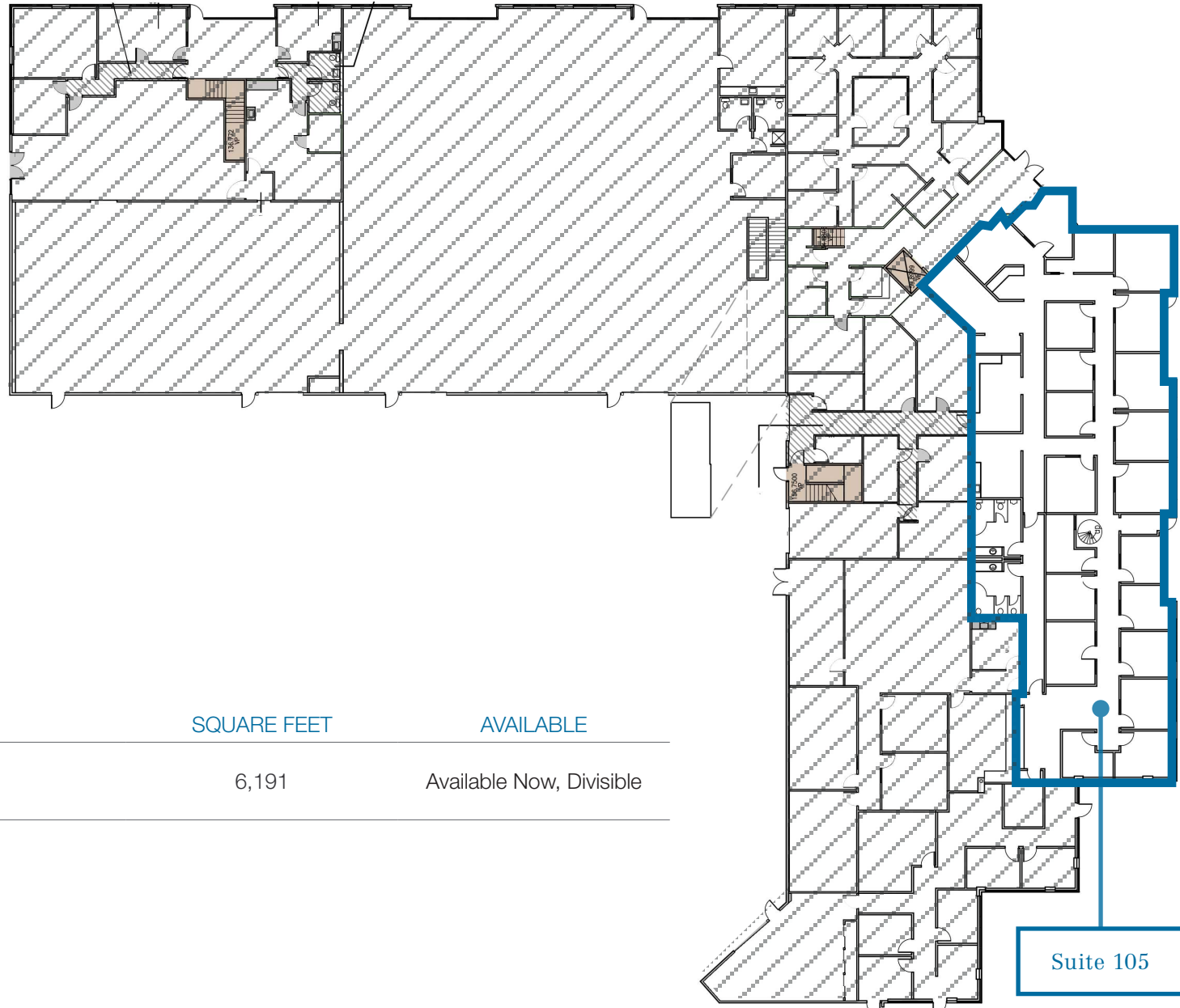


Building A: 1001 SW Klickitat Way, Seattle, WA

Building B&C: 1011 SW Klickitat Way, Seattle, WA

Building D: 1021 SW Klickitat Way, Seattle, WA

BUILDING A FLOOR 1

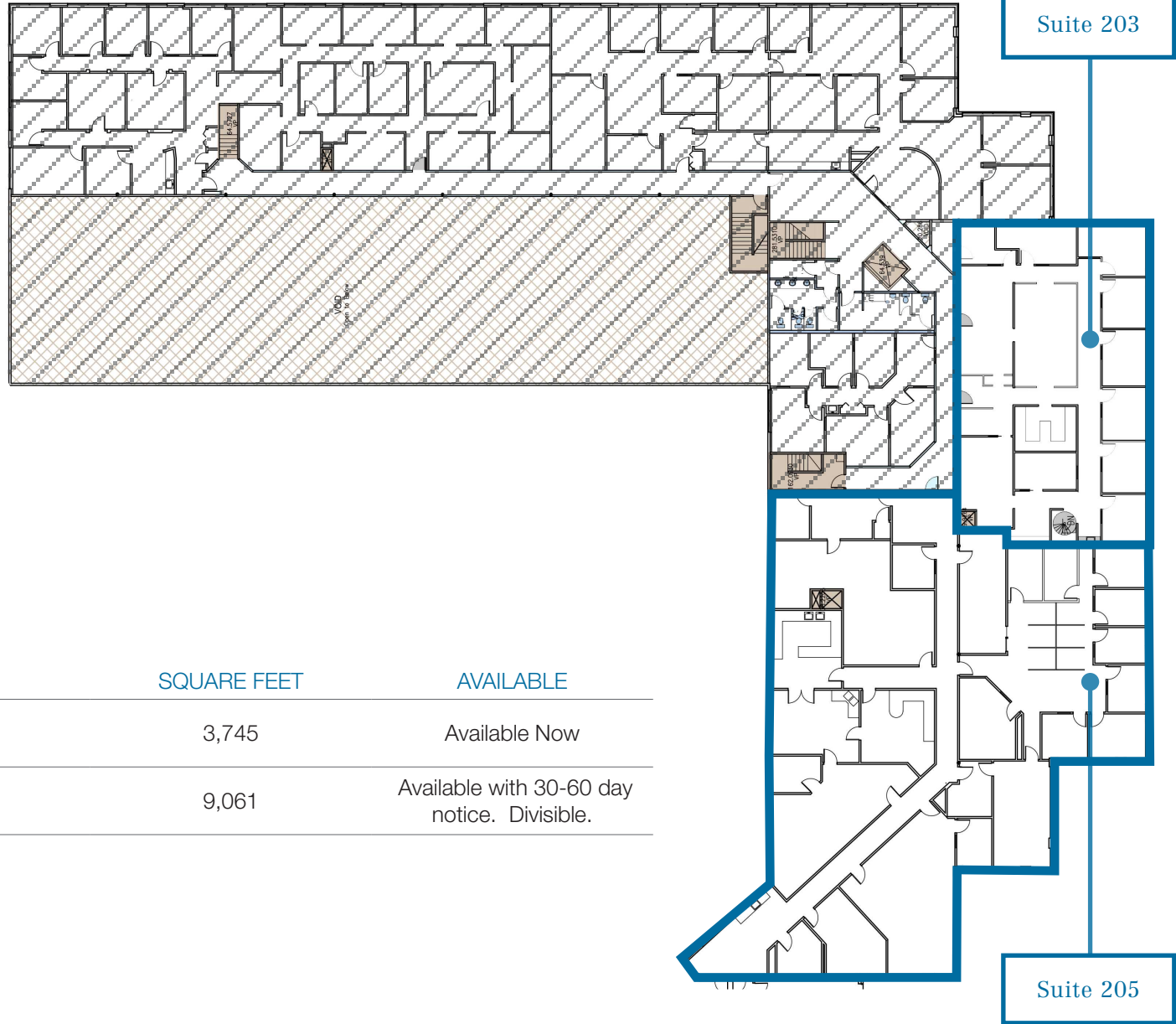


CURRENT AVAILABILITIES

SUITE	TYPE	SQUARE FEET	AVAILABLE
A-105	Office	6,191	Available Now, Divisible

 View Virtual Tour

BUILDING A FLOOR 2



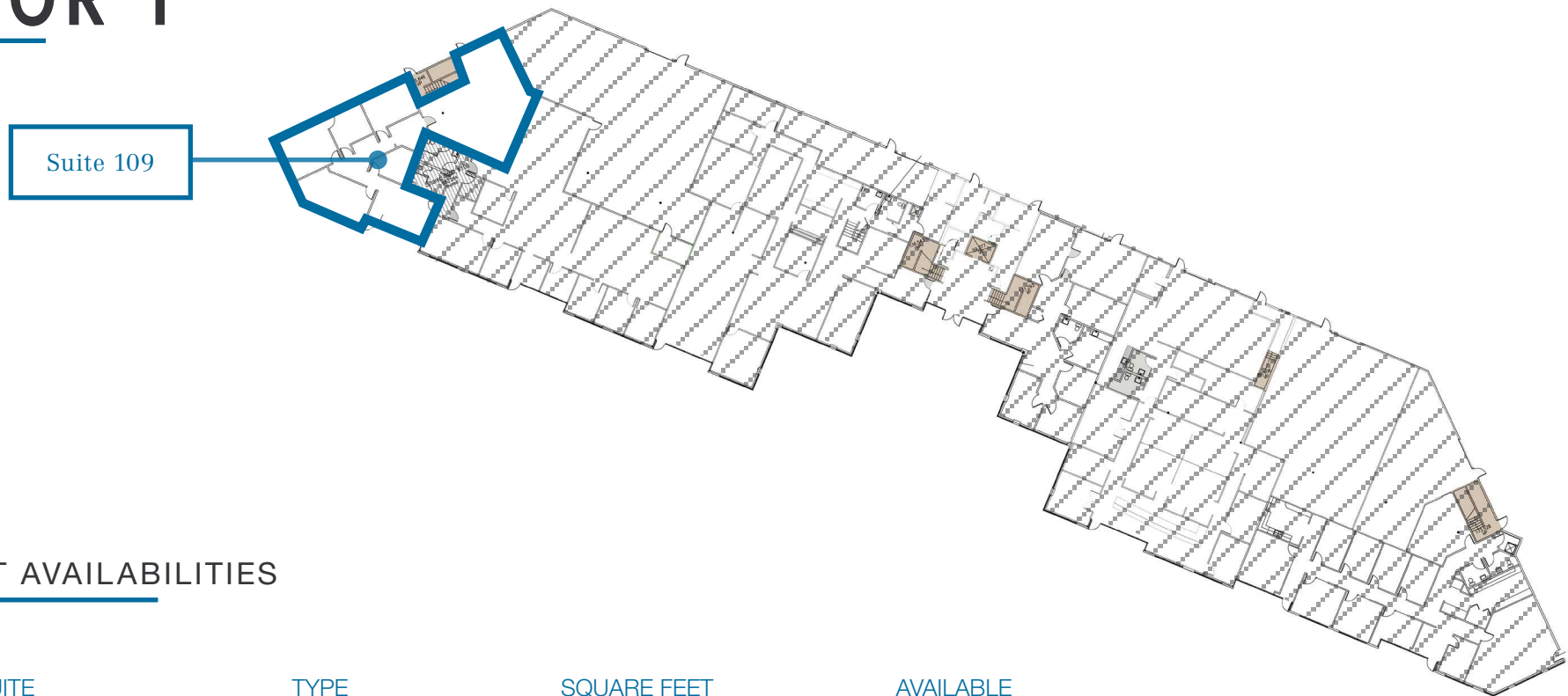
CURRENT AVAILABILITIES

SUITE	TYPE	SQUARE FEET	AVAILABLE
A-203	Office	3,745	Available Now
A-205	Office	9,061	Available with 30-60 day notice. Divisible.

3D View Virtual Tour

BUILDING B/C

FLOOR 1

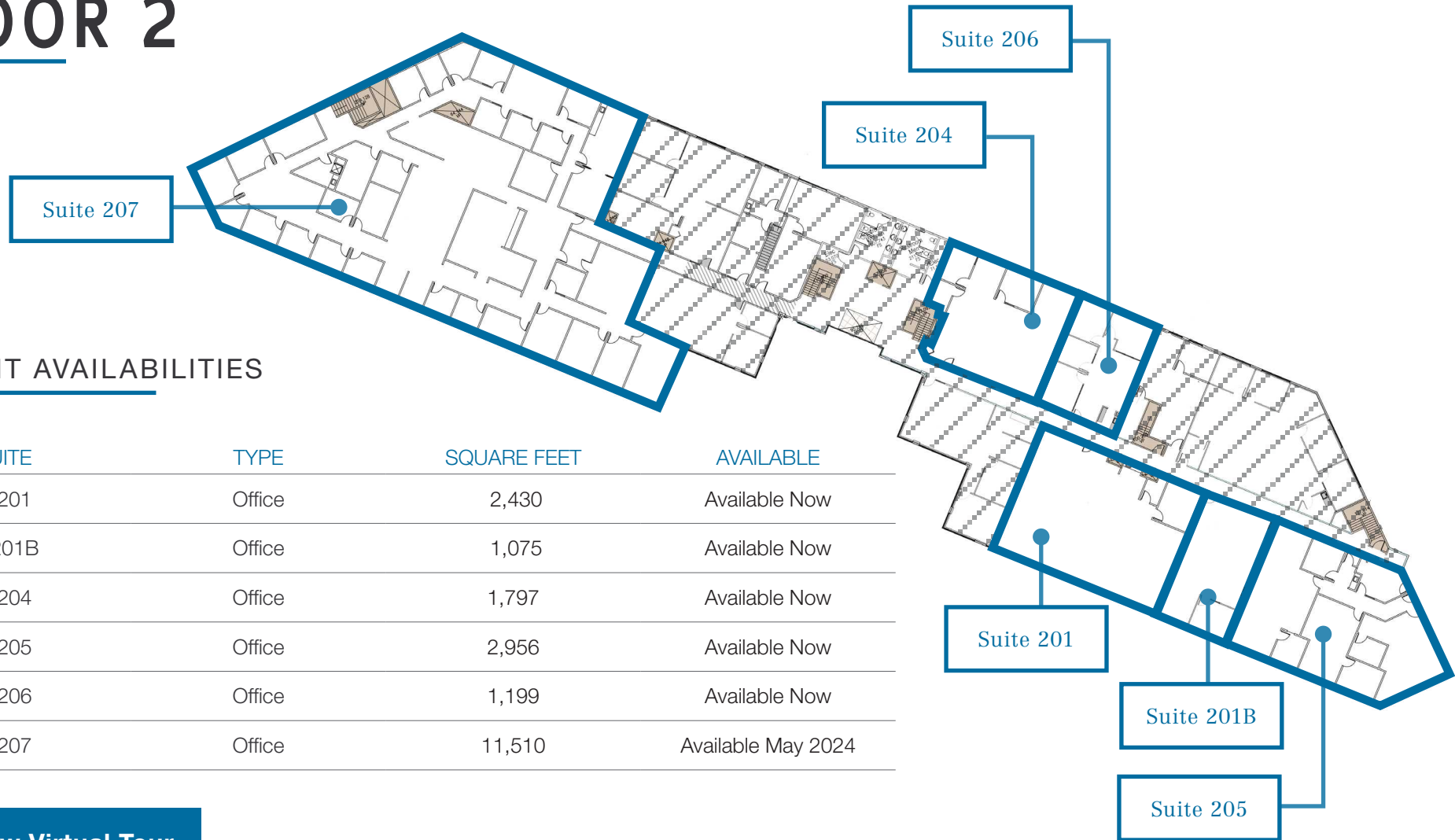


CURRENT AVAILABILITIES

SUITE	TYPE	SQUARE FEET	AVAILABLE
C-109	Office/ Warehouse	1,764/ 977	Available Dec 2023

[3D View Virtual Tour](#)

BUILDING B/C FLOOR 2



CURRENT AVAILABILITIES

SUITE	TYPE	SQUARE FEET	AVAILABLE
B-201	Office	2,430	Available Now
B-201B	Office	1,075	Available Now
B-204	Office	1,797	Available Now
B-205	Office	2,956	Available Now
B-206	Office	1,199	Available Now
B-207	Office	11,510	Available May 2024

3D View Virtual Tour

LOCATION

HARBOR MARINA CORPORATE CENTER

1001 SW KLIKITAT WAY, SEATTLE, WA 98134

