

FOR LEASE

ECHLYNN BUILDING

6520 212TH STREET SW, LYNNWOOD, WA 98036



OFFERING SUMMARY

Available SF: 1,816 SF

Lease Rate: \$18.00 SF/month
(NNN)

Year Built: 1977

Building Size: 8,100 SF

Zoning: OB

Market: Lynnwood

PROPERTY OVERVIEW

Two story office and industrial building with ample parking and easy access to many nearby amenities.

PROPERTY HIGHLIGHTS

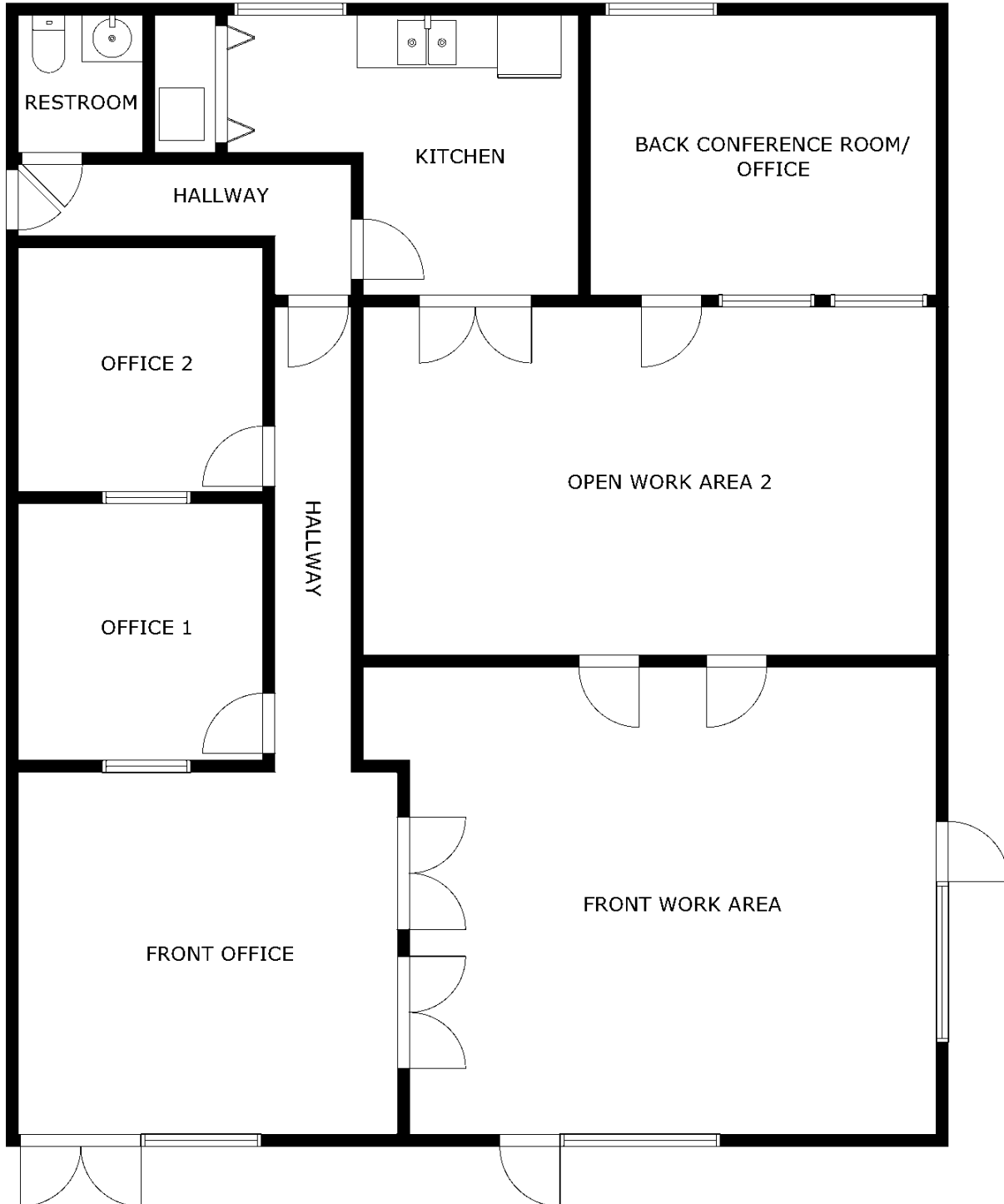
- Ample Parking
- Great Access to SR-99 & I-5
- Large Windows Provide Natural Light
- Restroom in Suite
- Well Maintained Building



DAVID HALL, CCIM, CPM CANDIDATE
206.381.3883 x107
david@corecommercialproperties.com

ECHLYNN BUILDING

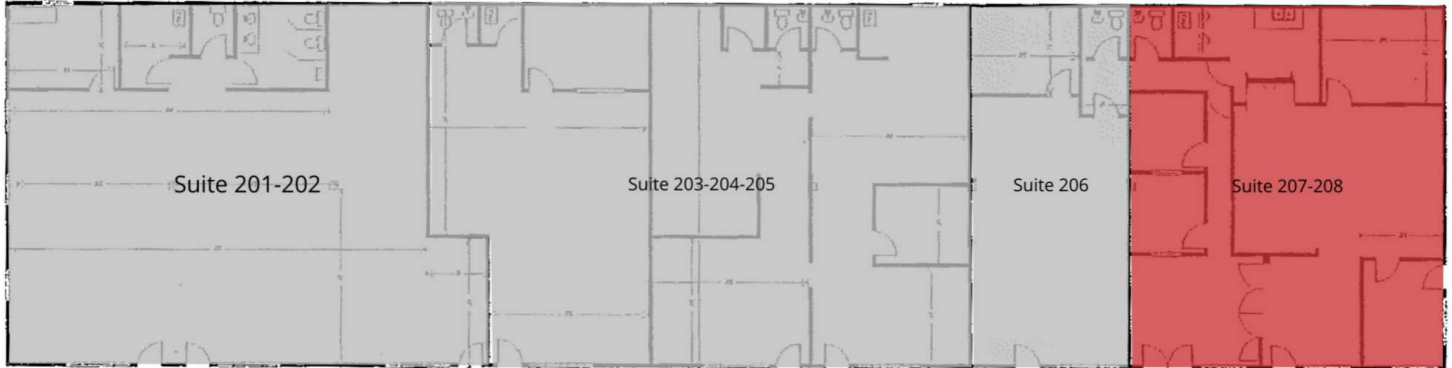
6520 212TH STREET SW, LYNNWOOD, WA 98036



DAVID HALL, CCIM, CPM CANDIDATE
206.381.3883 x107
david@corecommercialproperties.com

ECHLYNN BUILDING

6520 212TH STREET SW, LYNNWOOD, WA 98036



LEGEND

Available

Unavailable

LEASE INFORMATION

Lease Type:	NNN
Total Space:	1,816 SF

Lease Term:	Negotiable
Lease Rate:	\$18.00 SF/month

AVAILABLE SPACES

SUITE	TENANT	SIZE	TYPE	RATE	DESCRIPTION
Suite 208	Available	1,816 SF	NNN	\$18.00 SF/month	Ground floor office with reception, large open work areas, conference rooms, offices and private restroom.



DAVID HALL, CCIM, CPM CANDIDATE
 206.381.3883 x107
 david@corecommercialproperties.com

ECHLYNN BUILDING

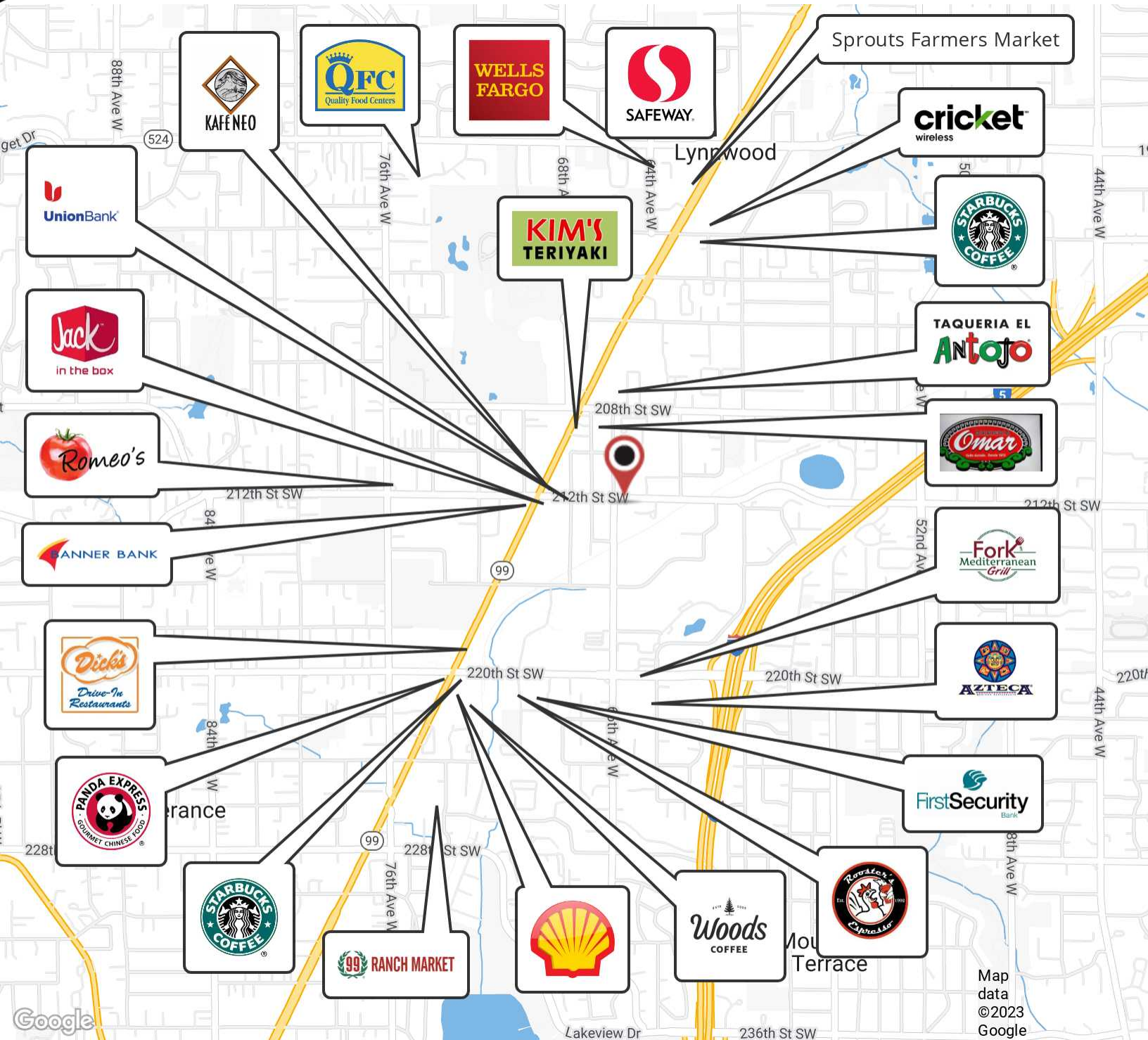
6520 212TH STREET SW, LYNNWOOD, WA 98036



DAVID HALL, CCIM, CPM CANDIDATE
206.381.3883 x107
david@corecommercialproperties.com

ECHLYNN BUILDING

6520 212TH STREET SW, LYNNWOOD, WA 98036



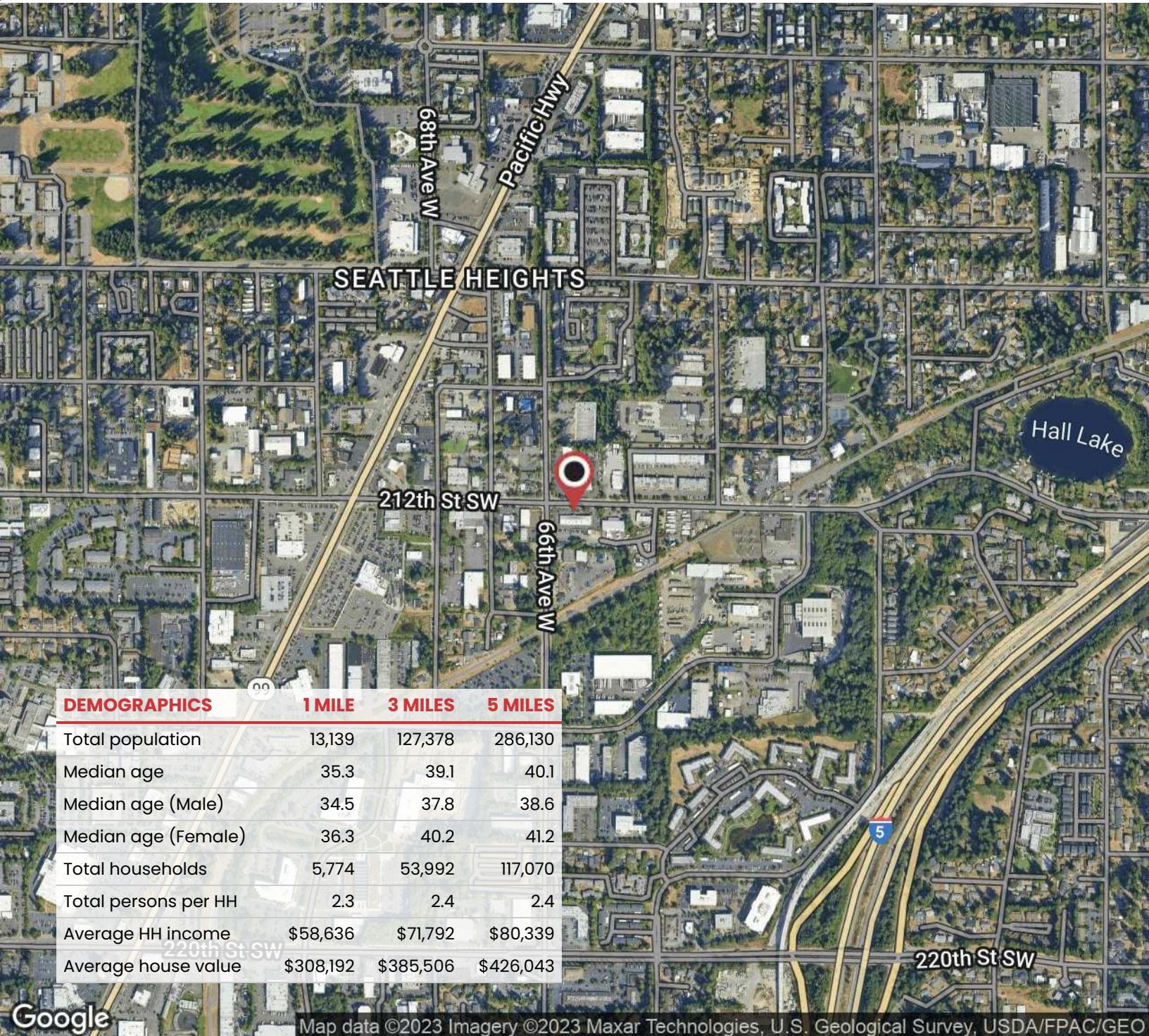
Map data ©2023 Google



DAVID HALL, CCIM, CPM CANDIDATE
206.381.3883 x107
david@corecommercialproperties.com

ECHLYNN BUILDING

6520 212TH STREET SW, LYNNWOOD, WA 98036



Map data ©2023 Imagery ©2023 Maxar Technologies, U.S. Geological Survey, USDA/FPAC/GEO



DAVID HALL, CCIM, CPM CANDIDATE
 206.381.3883 x107
 david@corecommercialproperties.com