

Retail/Restaurant
FOR LEASE

NEW CONSTRUCTION

DELIVERY: FEBRUARY, 2024



208 N Samish Way ~ Bellingham

Nestled between Bellingham Bay and Mount Baker, KERF mixed-use development will feature 196 apartments and 2,627 square feet of retail space in the Samish Way Urban Village. Retailers will benefit from being less than 2 miles from Western Washington University with over 16k students and faculty. Samish Way offers a dynamic and youthful atmosphere and strong exposure for retail growth.

ALEX VLASKI

425.505.2700

alexv@jshproperties.com

AARON BENNETT

206.859.4500

aaronb@jshproperties.com



JSH | PROPERTIES, INC.



KERF RETAIL DELIVERY: FEBRUARY 2024

196 apartment units with 2,627 SF of street level retail

- » Ideal for: retail, coffee, restaurant, service, pet retail/service
- » Type I venting and grease interceptor available
- » Within two miles of Western Washington University



PROPERTY AMENITIES

- ECO-FRIENDLY CONSTRUCTION
- EXPOSED WOOD CEILINGS
- EXPANSIVE WINDOWS FOR MAXIMUM EXPOSURE
- CONTEMPORARY ARCHITECTURAL DESIGN

THE INFORMATION CONTAINED HEREIN HAS BEEN GIVEN TO US BY SOURCES WE DEEM RELIABLE. WE HAVE NO REASON TO DOUBT ITS ACCURACY, BUT WE DO NOT GUARANTEE IT. ALL INFORMATION SHOULD BE VERIFIED PRIOR TO PURCHASE OR LEASE. SITE PLANS ARE NOT TO SCALE.

KERF APARTMENTS RETAIL FOR LEASE | 2 |

JSHPROPERTIES.COM



| AVAILABLE | RSF | BASE RENT | NNN EST./SF | FEATURES |
|-----------|-----|-----------|-------------|----------|
|-----------|-----|-----------|-------------|----------|

RETAIL

2,627

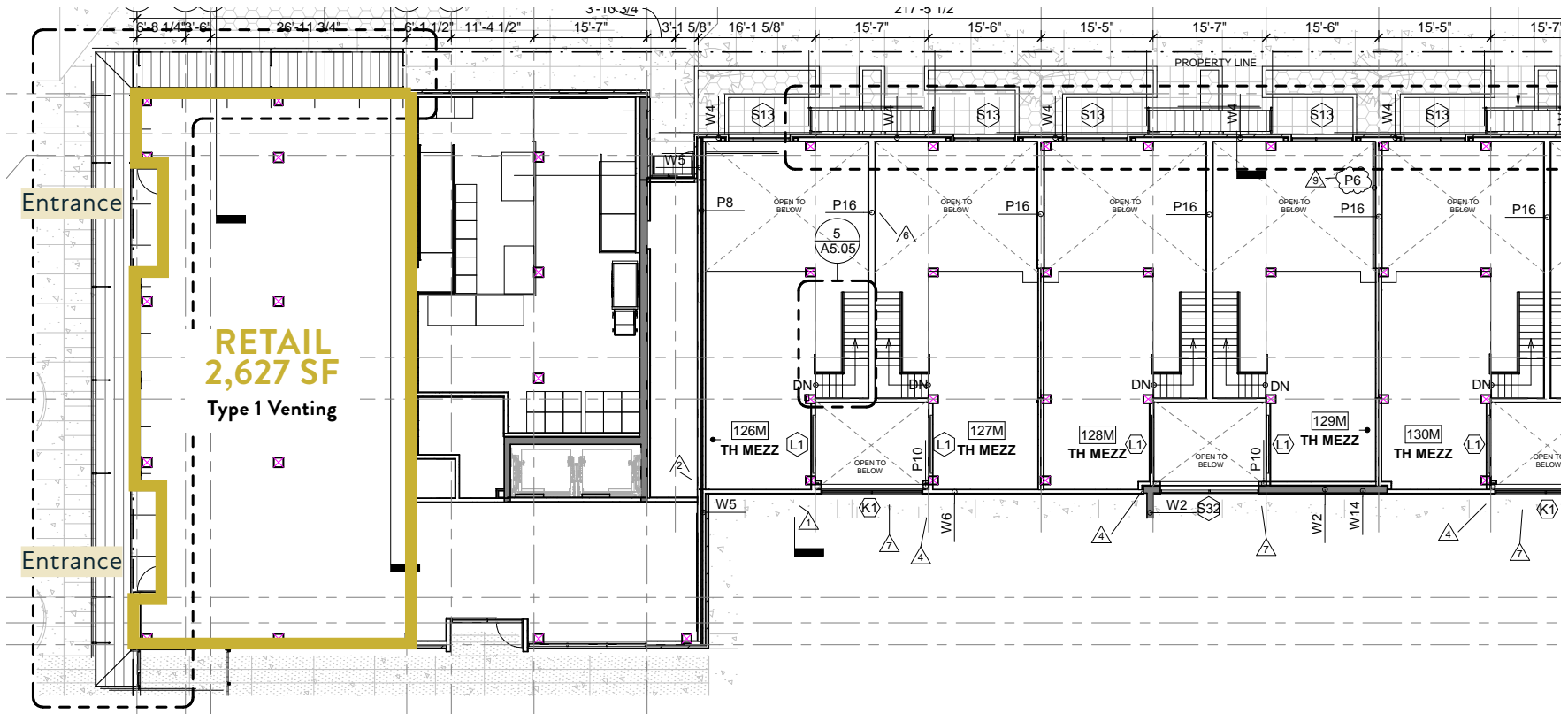
\$30.00

\$9.00

Ideal for restaurant, service, medical, pet
Type 1 venting and grease receptor

Abbott Street

North Samish Way ~13K Vehicles per Day



DEMOGRAPHICS ~ 1 MILE RADIUS

KEY FACTS



21,926

Population



24.9

Median Age



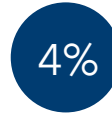
2.0

Average Household Size



\$79,144

2023 Average Household Income (Esri)



4%

No High School Diploma



17%

High School Graduate



30%

Some College



49%

Bachelor's/Grad/Prof Degree

EDUCATION

EMPLOYMENT



56%

White Collar



18%

Blue Collar



26%

Services

BUSINESS



815

Total Businesses



9,327

Total Employees

ANNUAL HOUSEHOLD SPENDING



\$1,771

Apparel & Services



\$227

Computers & Hardware



\$2,997

Eating Out



\$1,629

Travel



\$40

Theatre/Operas/Concerts



\$45

Movies/Museums/Parks



\$5,130

Groceries



\$5,197

Health Care



\$42

Sports Events



\$9

Online Games

ANNUAL LIFESTYLE SPENDING



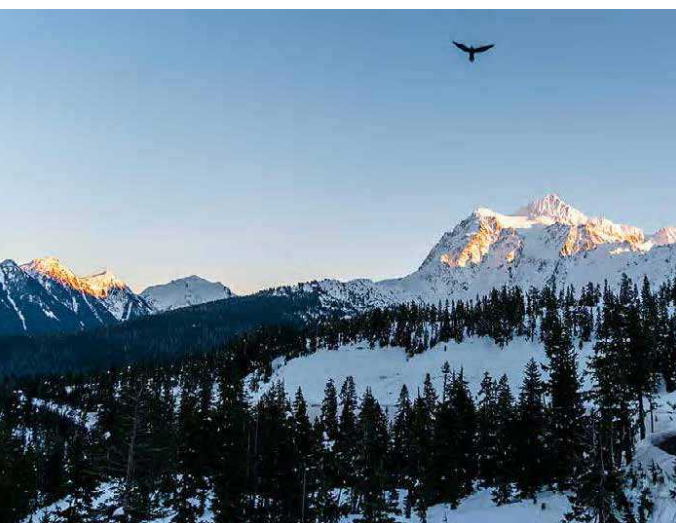
15,197 Students
700 Faculty



- Days Inn Wyndham
- El Agave Mexican
- Happy Nails
- Bellingham Lodge
- Blue Fin Sushi
- Coachman Inn
- Bay City Inn
- The Lodge Coffee
- Wallgreens

- Haggen
- Rite Aid
- PetStop
- Starbucks
- REI
- Tandoori Bites

Sehome High School



| 2023 DEMOGRAPHICS | 1 MILE | 3 MILE | 5 MILE |
|--------------------|----------|-----------|-----------|
| Population | 21,926 | 74,861 | 106,522 |
| Daytime Population | 21,434 | 86,753 | 119,886 |
| Households | 8,854 | 31,971 | 45,617 |
| Avg. HH Income | \$79,144 | \$101,158 | \$101,140 |
| Median Age | 24 | | |
| Renter Occupied | 69% | | |

THE INFORMATION CONTAINED HEREIN HAS BEEN GIVEN TO US BY SOURCES WE DEEM RELIABLE. WE HAVE NO REASON TO DOUBT ITS ACCURACY, BUT WE DO NOT GUARANTEE IT. ALL INFORMATION SHOULD BE VERIFIED PRIOR TO PURCHASE OR LEASE. SITE PLANS ARE NOT TO SCALE.