

8016 W. 4th Ave, Kennewick



Property Description

+/- 1,400 sf of available space, located off of 4th avenue in the Hanse Park area. Full service lease, negotiable term. Due to zoning, use will need to be approved by the City.

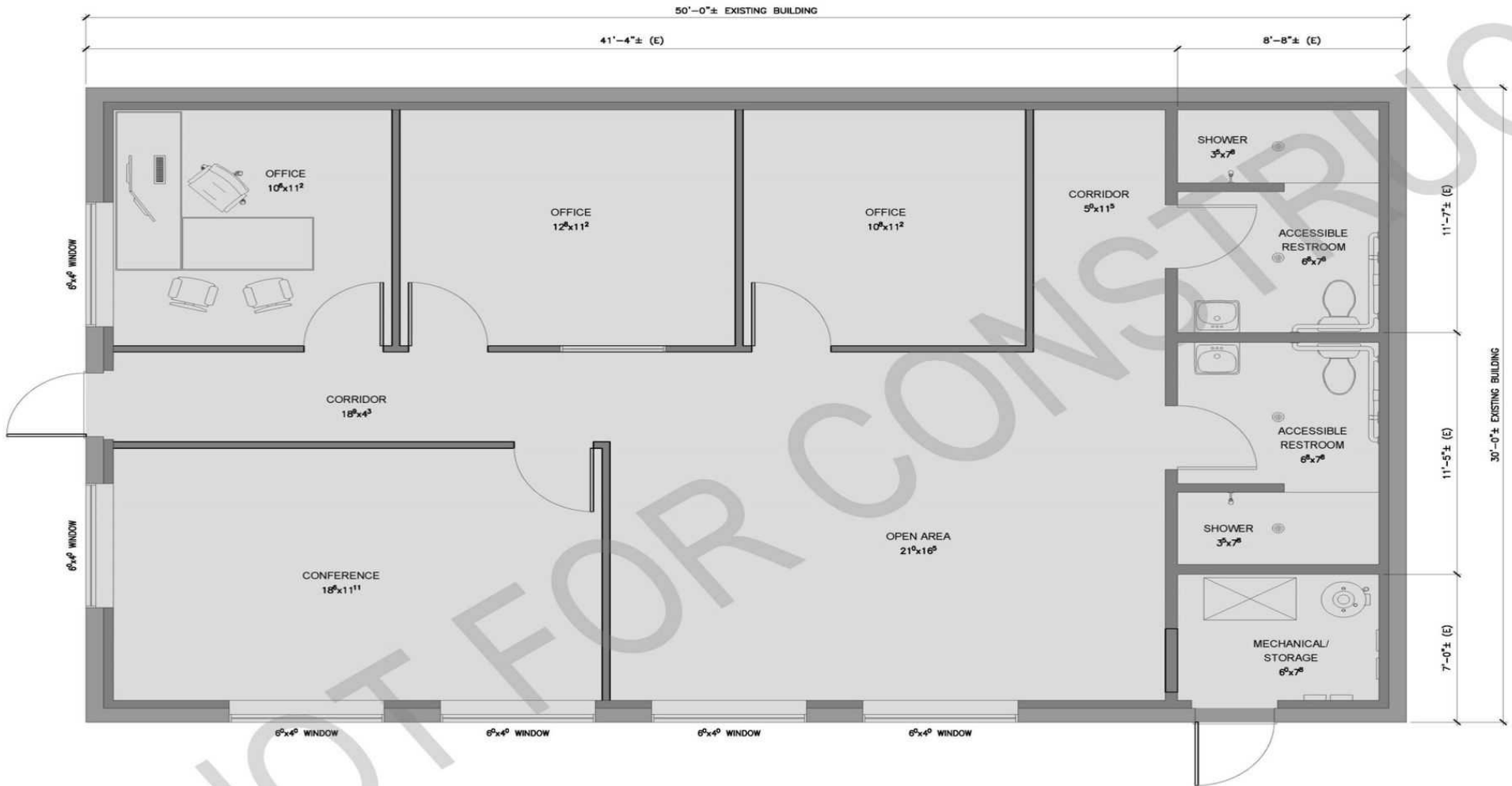
Offering Summary

Lease Rate:	\$25.00 per SF
Number of Units:	1
Available SF:	1,500 SF
Lot Size:	5.27 Acres
Building Size:	1,410 SF
Zoning	RH

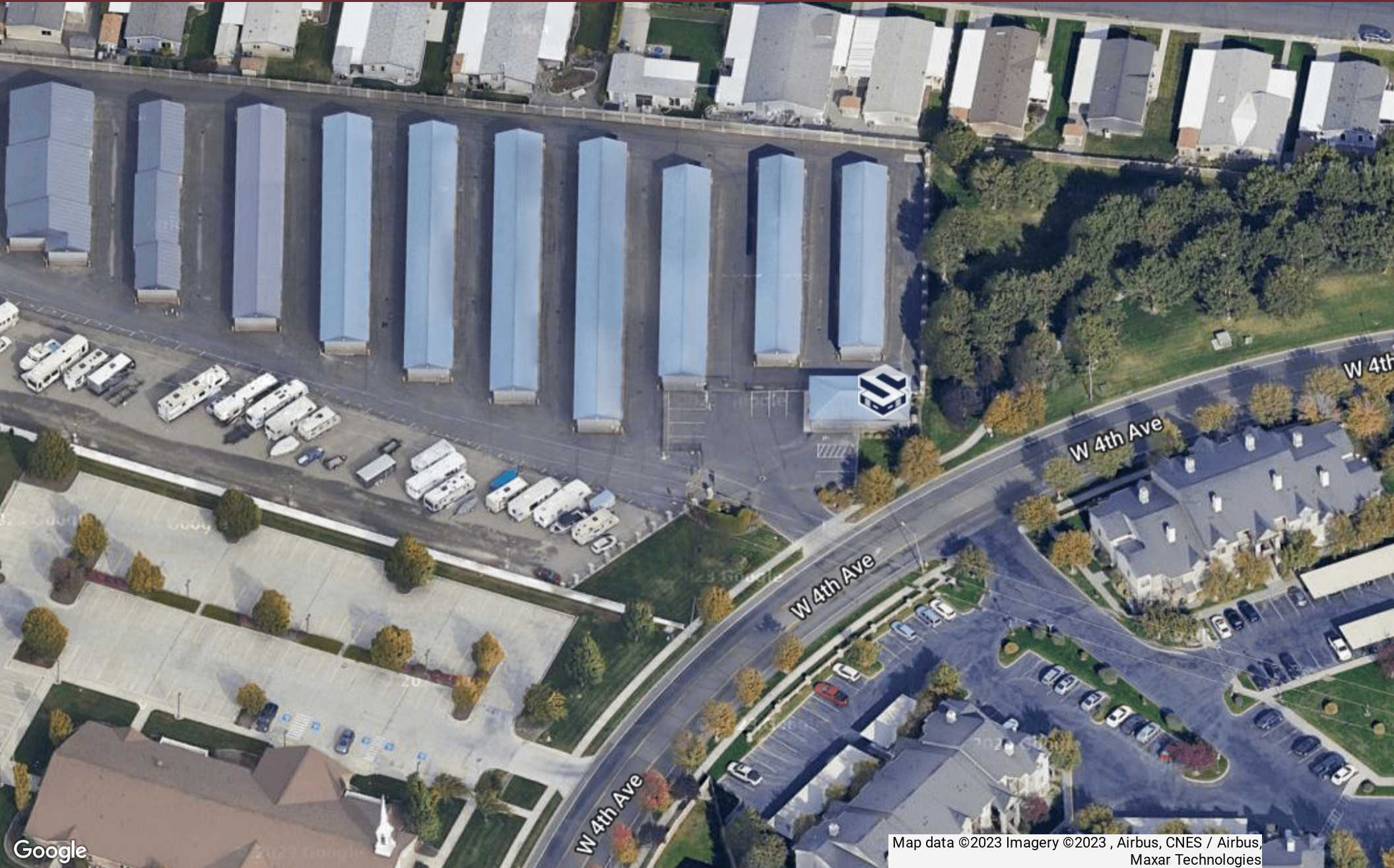
Additional Photos



Proposed Floor Plans



Location Map



Map data ©2023 Imagery ©2023 , Airbus, CNES / Airbus, Maxar Technologies

Google



Derrick Stricker CCIM SIOR
509.430.8533
Derrick@StrickerCRE.com

Jazmine Murillo
509.792.0428
jazmine@strickercre.com

strickerCRE.com