



SEE A BRIGHTER WAY

28,945 SF

Lab space for sublease



645 ELLIOTT

645 Elliott Avenue West | Seattle, Washington 98119

Sublease Highlights

- Sublease through May 31, 2032
- 28,945 SF (~ 60% Lab / 40% Office)
- Recently improved lab (May 2022)
- FF&E available
- Up to ±39,291 SF of contiguous space available for a full floor user
- New support lab resource including flow cytometry, cell and tissue
- Culture dedicated refrigerator / freezer archive



Building Amenities

- Efficient floor plates
- Underground parking
- Expansive windows allow for ample natural light
- Panoramic views of Elliott Bay
- Pet friendly
- LEED Gold construction
- Bike storage
- On- site showers & locker rooms

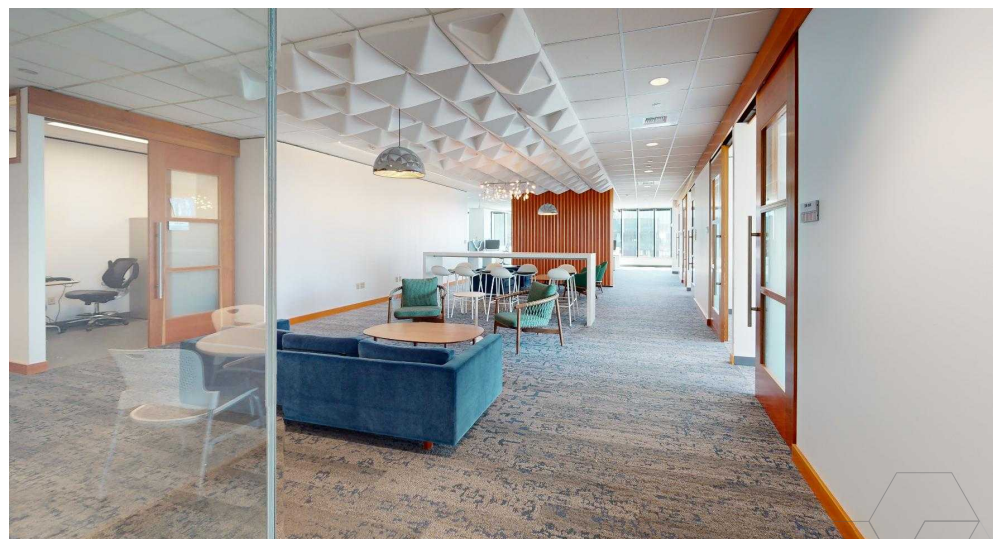
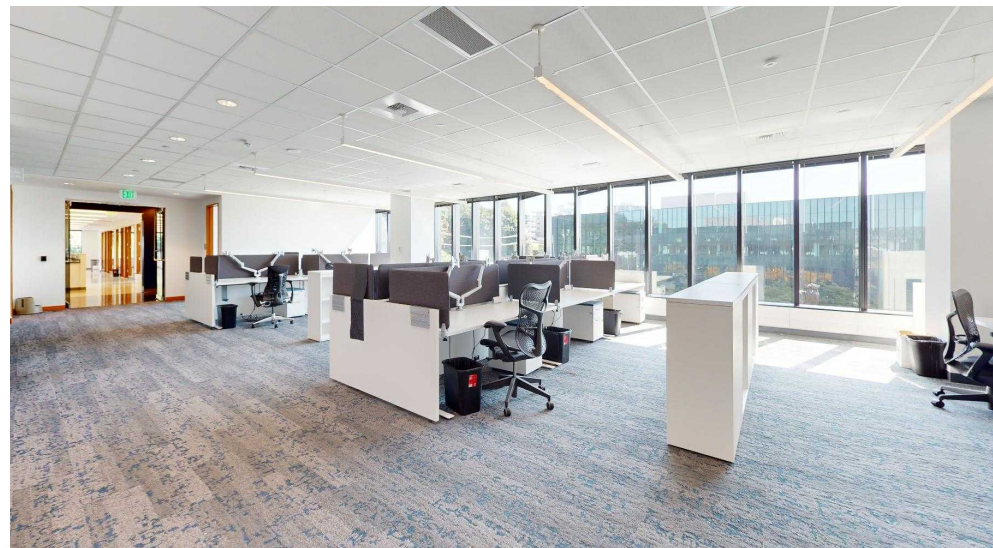
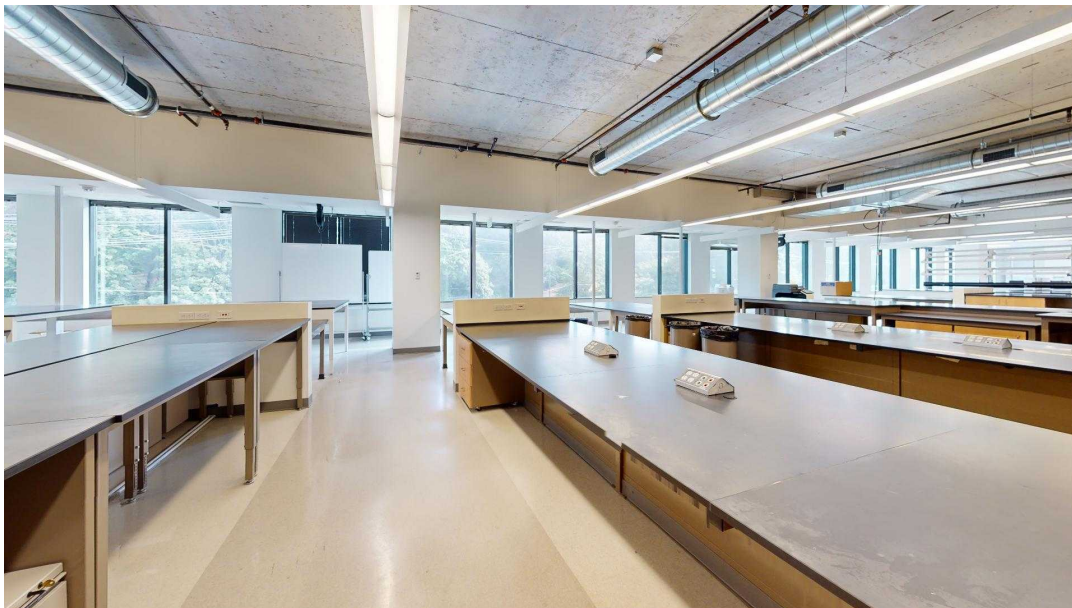
Although information has been obtained from sources deemed reliable, neither Owner nor JLL makes any guarantees, warranties or representations, express or implied, as to the completeness or accuracy as to the information contained herein. Any projections, opinions, assumptions or estimates used are for example only. There may be differences between projected and actual results, and those differences may be material. The Property may be withdrawn without notice. Neither Owner nor JLL accepts any liability for any loss or damage suffered by any party resulting from reliance on this information. If the recipient of this information has signed a confidentiality agreement regarding this matter, this information is subject to the terms of that agreement. © 2023 Jones Lang LaSalle IP, Inc. All rights reserved.

28,945 SF

Lab space for sublease



Click to **virtual tour** 



New office with a balance of open and private offices, conference rooms, focus areas, and collaboration spaces

60% office | 40% Lab | Up to ±39,291 SF of contiguous space available for a full floor user

Jones Lang LaSalle Brokerage, Inc.



28,945 SF

Lab space for sublease



Click to [virtual tour](#)

Sublease Term

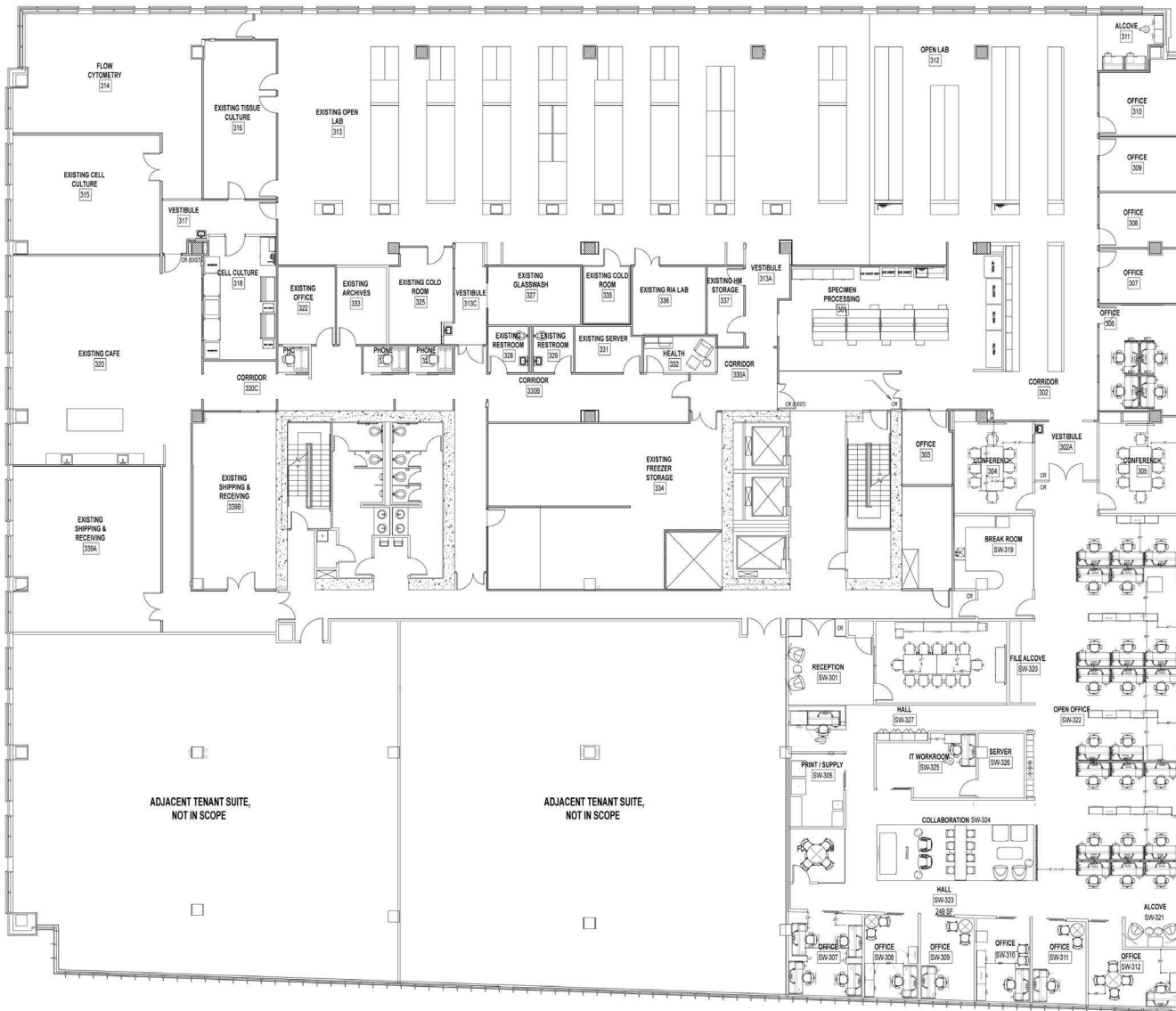
May 31, 2032

Rate

Contact broker for pricing info

Additional Space

10,346 SF additional space available on the 3rd floor



New office with a balance of open and private offices, conference rooms, focus areas, and collaboration spaces

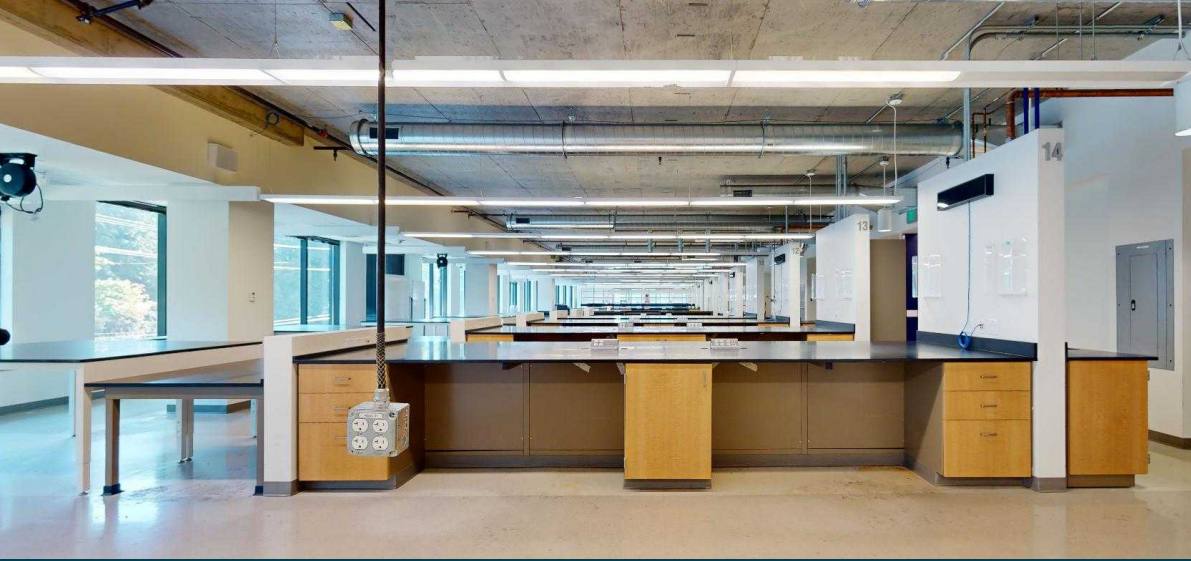
60% office | 40% Lab | Up to ±39,291 SF of contiguous space available for a full floor user

28,945 SF Lab space for sublease

Click to [virtual tour](#) 



Dedicated cafe / lunch room



Robust open lab with excellent access to daylight



SEE A BRIGHTER WAY

Marcelo Garcés
Senior Vice President
206 321-4177
Marcelo.Garces.jll.com

Blair Stern
Senior Vice President
206 714-9520
Blair.Stern@jll.com



Although information has been obtained from sources deemed reliable, JLL does not make any guarantees, warranties or representations, express or implied, as to the completeness or accuracy as to the information contained here. Any projections, opinions, assumptions or estimates used are for example only. There may be differences between projected and actual results, and those differences may be material. JLL does not accept any liability for any loss or damage suffered by any party resulting from reliance on this information. If the recipient of this information has signed a confidentiality agreement with JLL regarding this matter, this information is subject to the terms of that agreement ©2023. Jones Lang LaSalle IP, Inc. All rights reserved.