

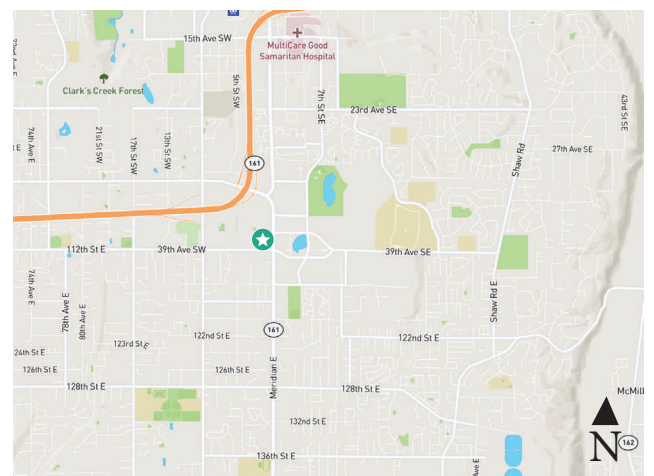
1015 39th Ave SE

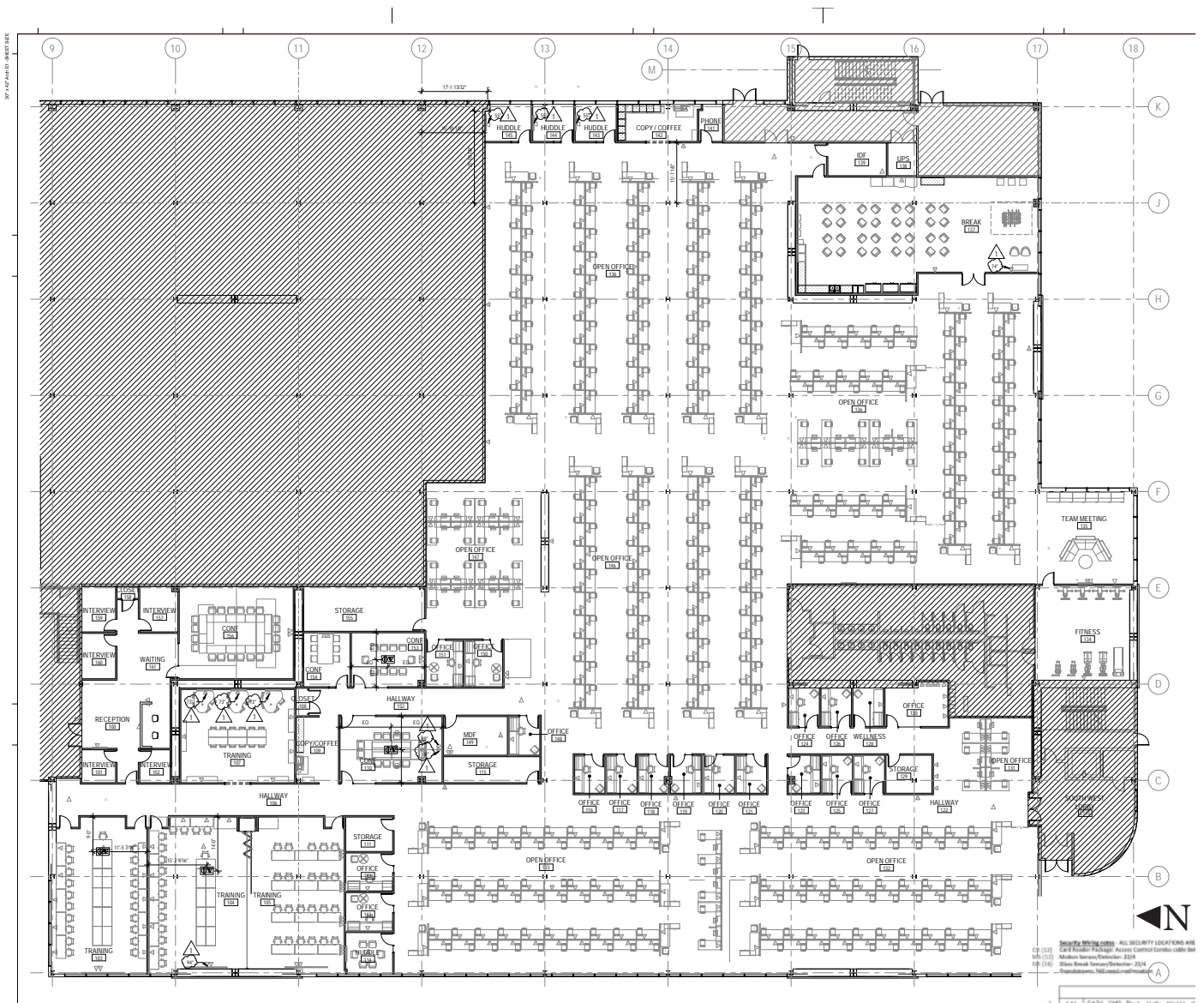
South Hill Business & Tech Center
1015 39th Ave SE
Puyallup, WA 98374



Property Info

- + Space Available: ±48, 957 SF
- + Brand new construction with newly renovated lobby, hang-out space, gaming, and wifi
- + Large, flexible ground floor with high ceilings, abundant natural light and inviting outdoor patio spaces
- + Sounder Puyallup Train Station 3.7 miles from SHBTC Campus
- + Credit sublessor; Master lease expires December 2025
- + Call broker for additional information





Contact Us

John Bauer
Senior Vice President
+1 425 462 6906
john.bauer@cbre.com

CBRE, Inc.
929 108th Avenue NE
Suite 700
Bellevue, WA 98004

© 2023 CBRE, Inc. All rights reserved. This information has been obtained from sources believed reliable, but has not been verified for accuracy or completeness. You should conduct a careful, independent investigation of the property and verify all information. Any reliance on this information is solely at your own risk. CBRE and the CBRE logo are service marks of CBRE, Inc. All other marks displayed on this document are the property of their respective owners, and the use of such logos does not imply any affiliation with or endorsement of CBRE. Photos herein are the property of their respective owners. Use of these images without the express written consent of the owner is prohibited. RP 10.16.2023