

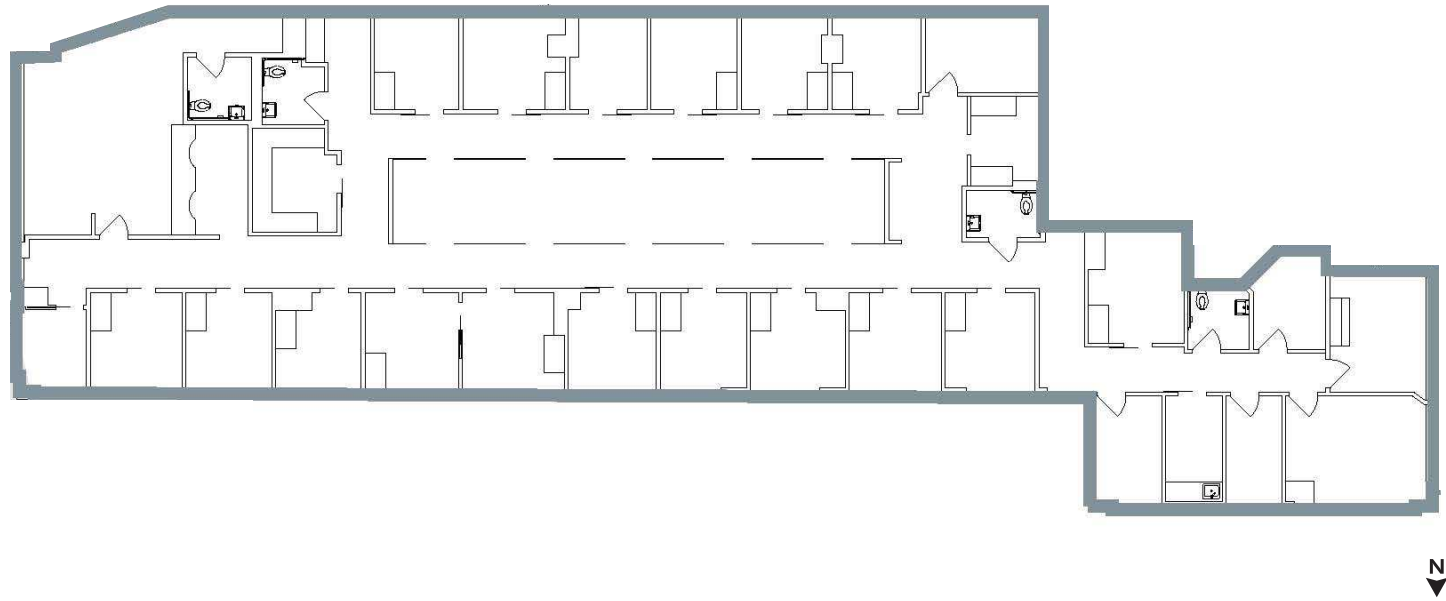
Woodinville Medical Plaza

Clinic Build-out

Suite 101
17000 140th Ave NE
Woodinville, WA 98072

Suite 101 - 5,941 SF Available





Building Details

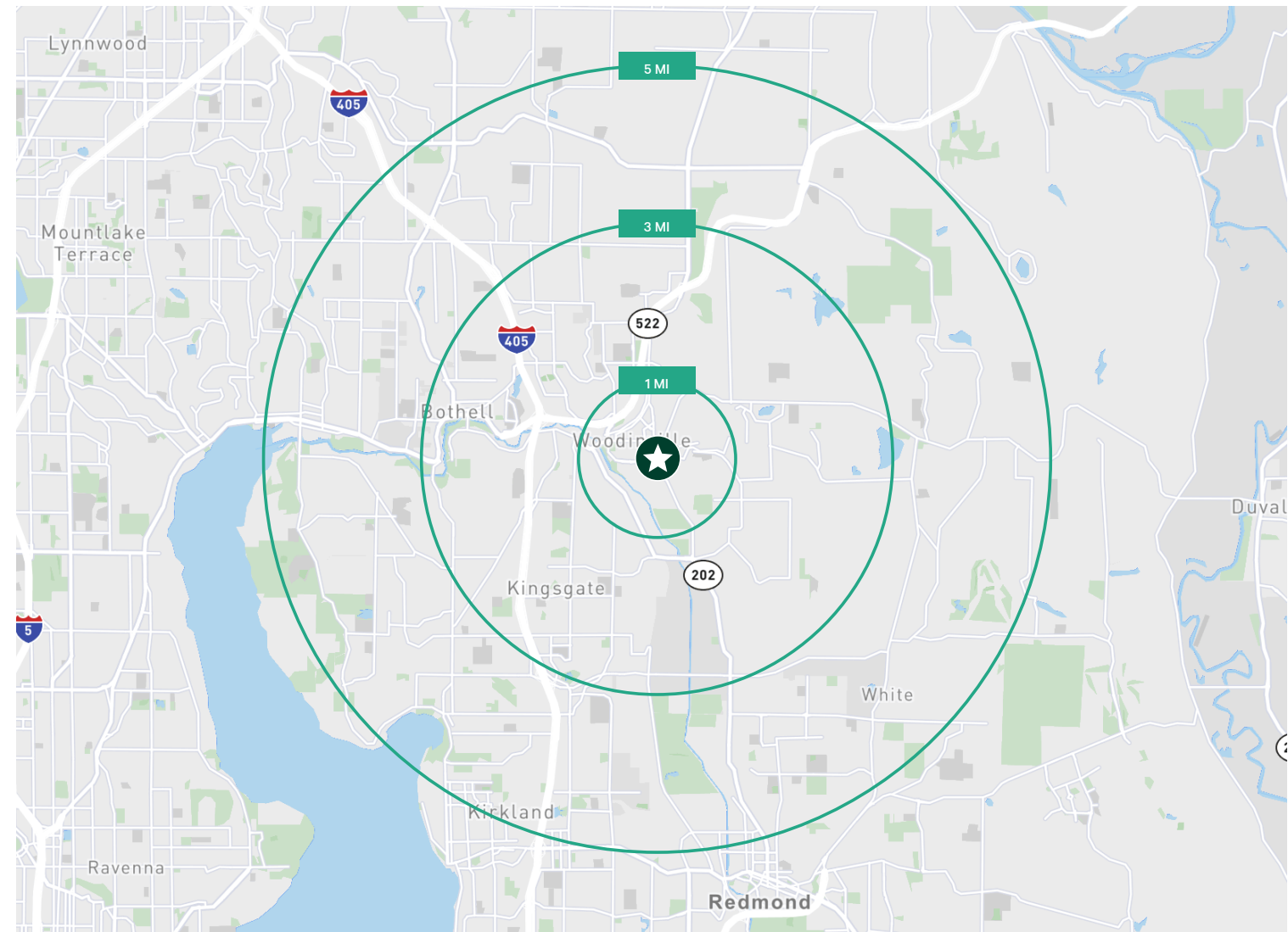
- 4.0 / 1,000 SF parking ratio
- Easy access to SR-522 and I-405
- Walking distance to Downtown Woodinville
- New exterior/interior finishes

Space Details

- 5,941 SF
- Sublease through February 2027
- Newly constructed clinic space
- Grade level access
- In suite restrooms
- Efficient build with 20 exam rooms

	1 Mile	3 Miles	5 Miles
2022 Population (Est.)	7,672	73,950	212,719
2027 Population (Proj.)	8,049	75,478	217,071
# of Households	3,813	29,549	81,449
Average Household Income	\$145,543	\$167,874	\$181,757
2022 Income Per Capita	\$71,150	\$66,824	\$69,666
Daytime Population - 2022	13,555	85,611	213,374

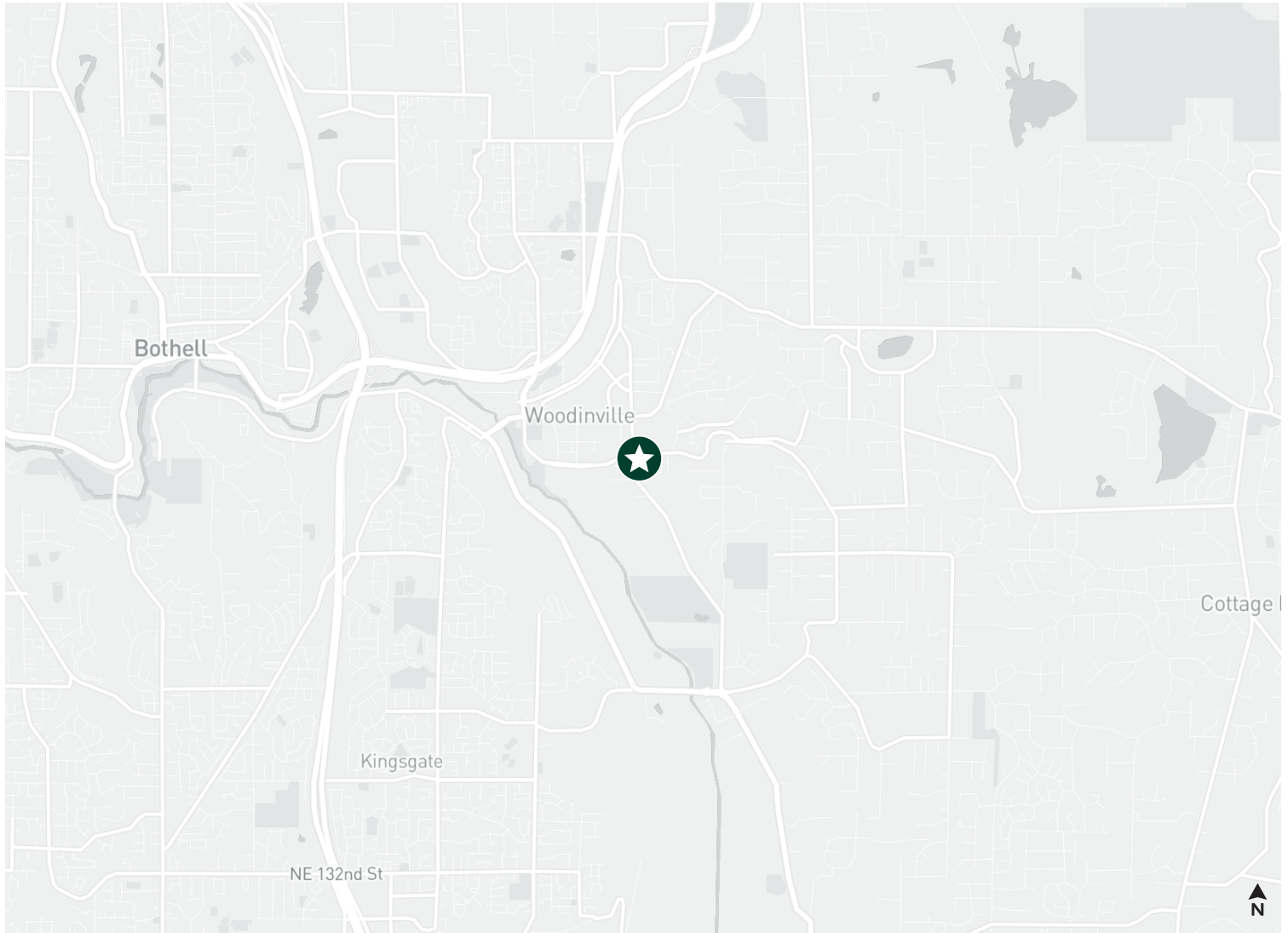
Source: ESRI 2022



Woodinville Medical Plaza

17000 140th Ave NE | Woodinville, WA 98072

For Sublease



Contact Us

Paul Carr

Senior Vice President

+1 206 292 6005

paul.carr@cbre.com

© 2023 CBRE, Inc. All rights reserved. This information has been obtained from sources believed reliable, but has not been verified for accuracy or completeness. You should conduct a careful, independent investigation of the property and verify all information. Any reliance on this information is solely at your own risk. CBRE and the CBRE logo are service marks of CBRE, Inc. All other marks displayed on this document are the property of their respective owners, and the use of such logos does not imply any affiliation with or endorsement of CBRE. Photos herein are the property of their respective owners. Use of these images without the express written consent of the owner is prohibited.

www.cbre.com

CBRE