

FOR SUBLEASE

# 21820 87TH AVE SE

*±4,000 SF Second-Story Office Space  
Available for Sublease in Woodinville*







### Property Details

PROPERTY TYPE	Office
YEAR BUILT	1972
AVAILABLE SF	±4,000
PROPERTY	Fully fenced/secured yard
LEASE TERM	October 31, 2026 expiration
PARKING	8 Surface Spaces
PARKING RATIO	0.80/1,000 SF
PRICING	\$12.00/SF/Yr gross
ZONING	Light Industrial, Snohomish County

4,000 SF

AVAILABLE OFFICE

2.5 AC

LAND SIZE

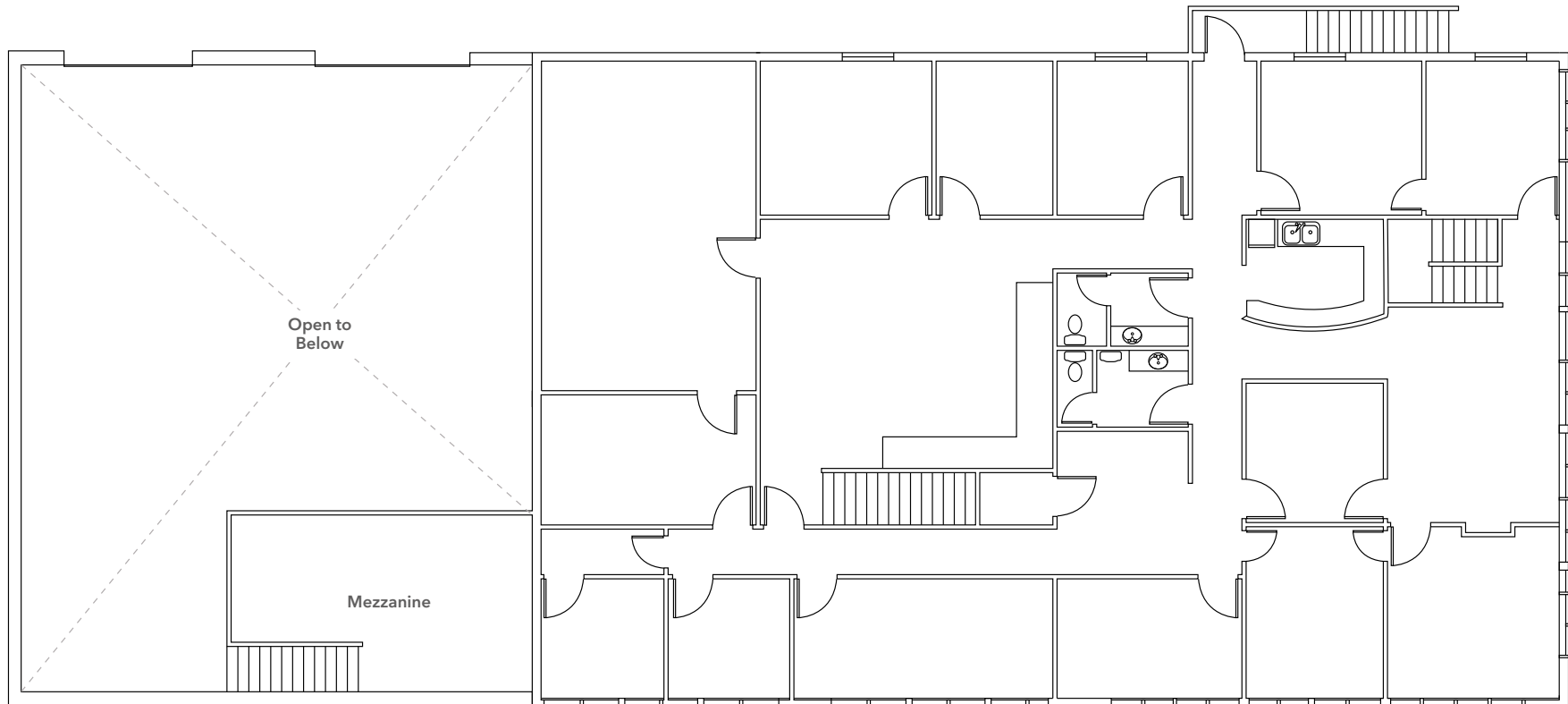
7.6 MI

TO DOWNTOWN  
BOTHELL

5.7 MI

TO DOWNTOWN  
WOODINVILLE

# OFFICE FLOOR PLAN



*4,000 SF*

AVAILABLE

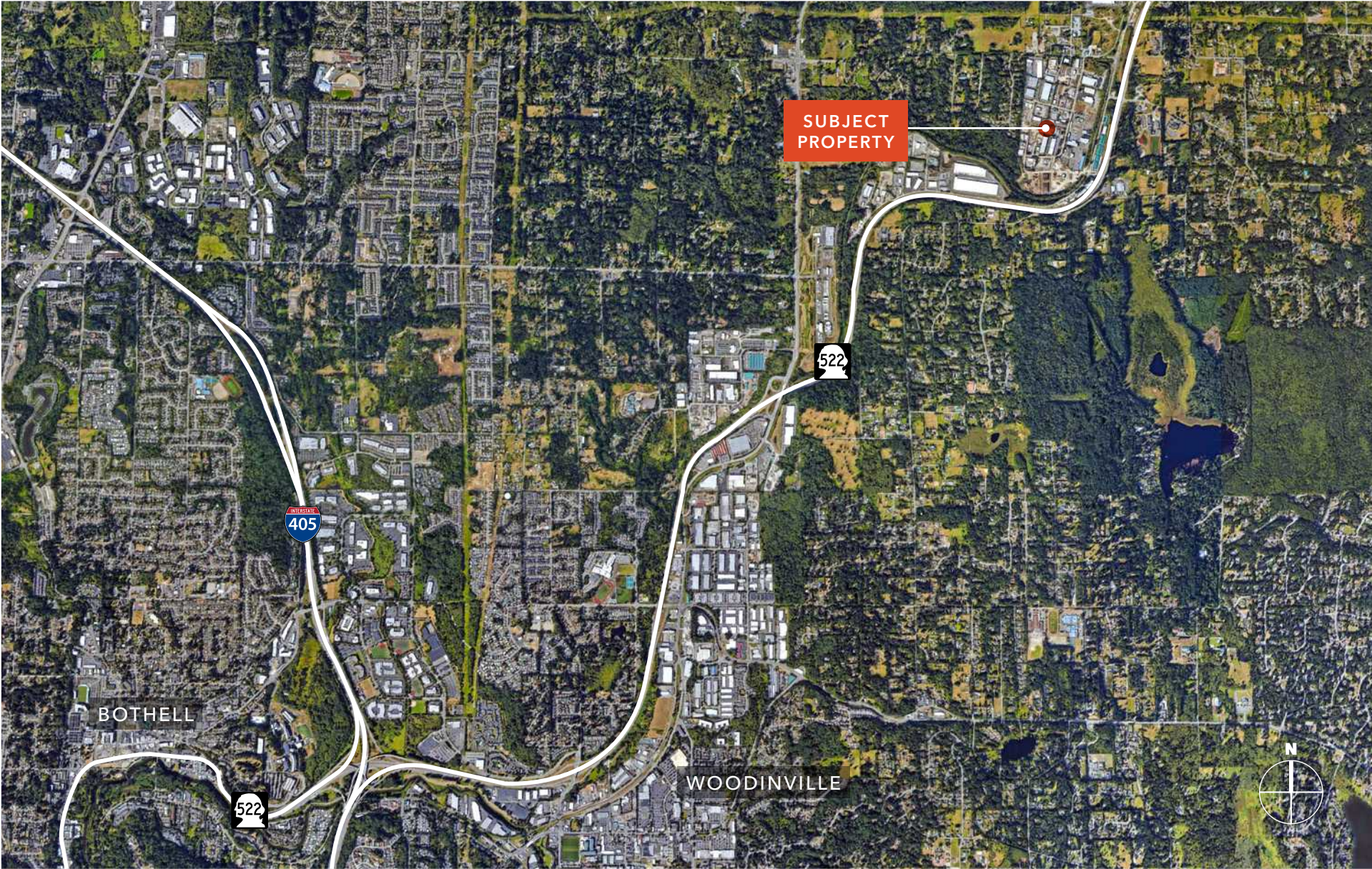
*NOW*

AVAILABLE

*\$12/SF/YR*

GROSS LEASE RATE







21820 87TH AVE SE

---



*Exclusively listed by*

**ZACH VALL-SPINOSA**  
425.450.1115  
zach.vallspinosa@kidder.com

**JAMES LEPTICH**  
425.450.1159  
james.leptich@kidder.com

**KIDDER.COM**

This information supplied herein is from sources we deem reliable. It is provided without any representation, warranty, or guarantee, expressed or implied as to its accuracy. Prospective Buyer or Tenant should conduct an independent investigation and verification of all matters deemed to be material, including, but not limited to, statements of income and expenses. Consult your attorney, accountant, or other professional advisor.

