

For Lease

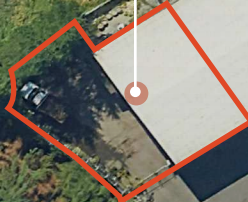
MALTBY 522 BUSINESS PARK

*+/- 2,500 SF of Warehouse with Minimal Office
and Small Secured Yard in Woodinville, WA*

22021 W BOSTIAN RD, WOODINVILLE, WA

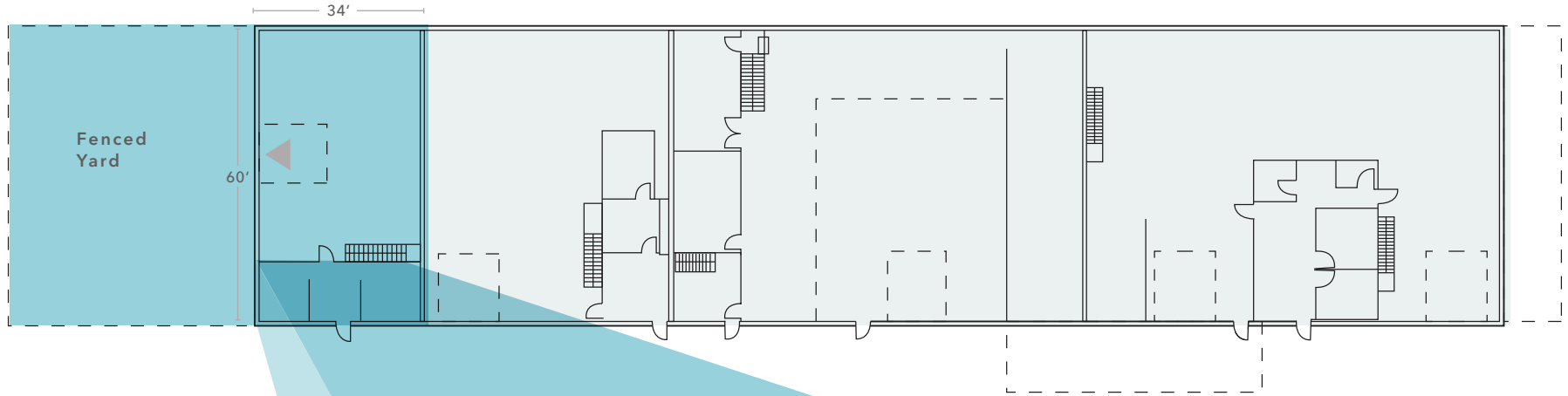


SUBJECT
PROPERTY



FLOOR PLANS

FIRST FLOOR



SECOND FLOOR



▲ Grade level loading

2,446 SF

TOTAL AREA

510 SF

OFFICE

2,400 SF

SECURE YARD

\$3,669

RATE / MONTH PLUS NNN'S



Building Highlights

2,446 SF unit with 510 SF of office

2,400 SF fenced & paved yard

426 SF mezzanine for storage

Close proximity to SR 522 & I-405

One grade-level door

\$3,669 / Month plus NNN

ZACH VALL-SPINOSA

Executive Vice President

425.450.1115

zach.vallspinosa@kidder.com