

**HARBOR
REALTY
ADVISORS**

COMMERCIAL OFFICE FOR LEASE

MALLARDS I

7195 WAGNER WAY NW GIG HARBOR, WA 98335

GARY GALLINGER
253.988.3367
GARY@HARBORRA.COM

FISCHER GALLINGER
253.330.1318
FISCHER@HARBORRA.COM

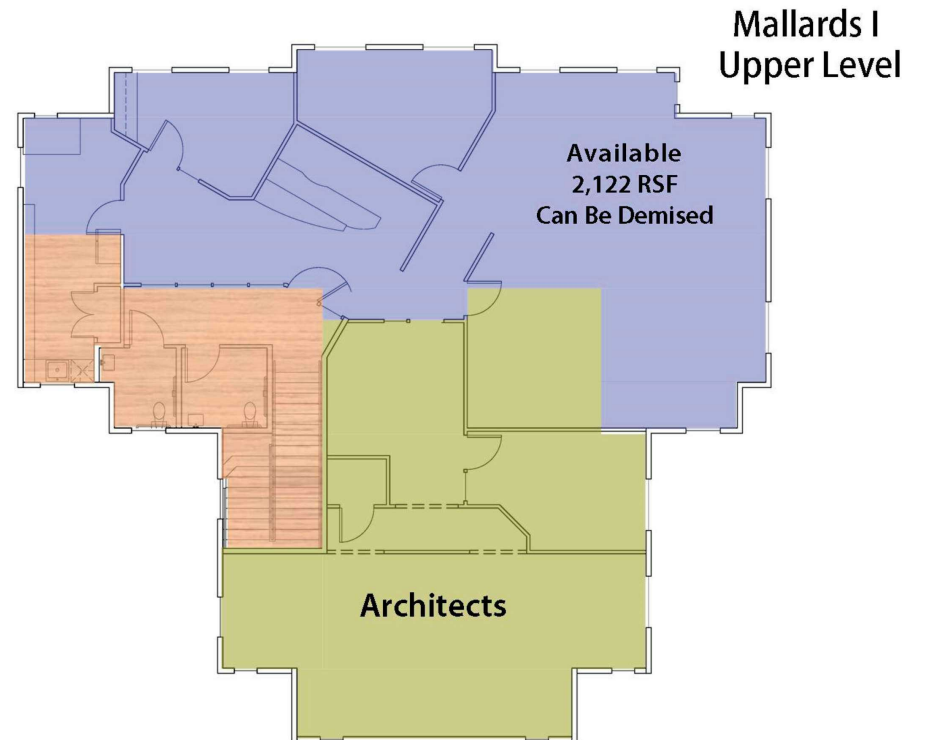


Harbor Realty Advisors
your commercial real estate edge

FOR LEASE

- Great location just off Wollochet Drive
- Ample parking available
- Quiet Professional Setting
- Highway 16 visibility
- Signage Opportunities
- Minutes from Downtown
- High Quality Building

<u>SUITE</u>	<u>TOTAL RSF</u>
202	2,122 SF



GARY GALLINGER
253.988.3367
GARY@HARBORRA.COM

FISCHER GALLINGER
253.330.1318
FISCHER@HARBORRA.COM

Harbor Realty Advisors...
...your commercial real estate edge.