

200 BROADWAY

Seattle, WA 98122



Capitol Hill Office Space

Available for Lease

Property Highlights

- Suite 200 - 1,712 SF - \$25.00/SF, NNN
- Suite 300 - 2,348 SF - \$16.00/SF, NNN
- NNN's = \$10.84/SF
- Move in ready with furniture
- Shared kitchen on each floor
- Great natural light
- Large conference & event space on-site
- On-site parking available



Contacts

ANDREW SHULTZ

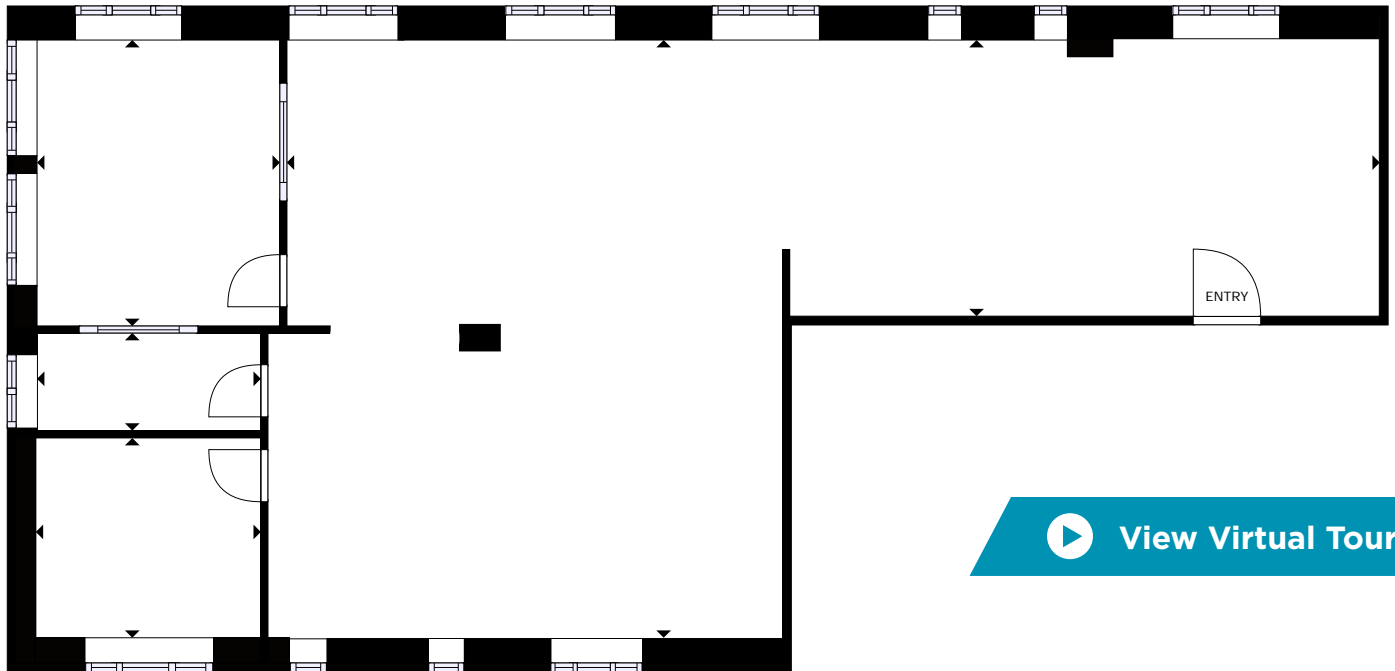
Senior Director
+1 206 215 1645
andrew.shultz@cushwake.com

BRANDON BURMEISTER

Senior Director
+1 206 215 9702
brandon.burmeister@cushwake.com

SUITE 300 - 2,348 SF

200 Broadway, Seattle, WA 98122



[View Virtual Tour](#)

Amenities & Location

- Centrally located in Capitol Hill with quick access to Downtown Seattle, I-5 and I-90
- 3 minutes to the International District Transit Tunnel stop via the First Hill Streetcar which is steps away



Walk Score

94



Transit Score

100



Bike Score

74



Contacts

ANDREW SHULTZ

Senior Director
+1 206 215 1645
andrew.shultz@cushwake.com

BRANDON BURMEISTER

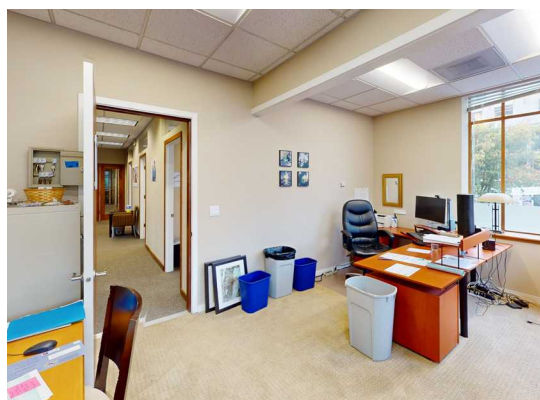
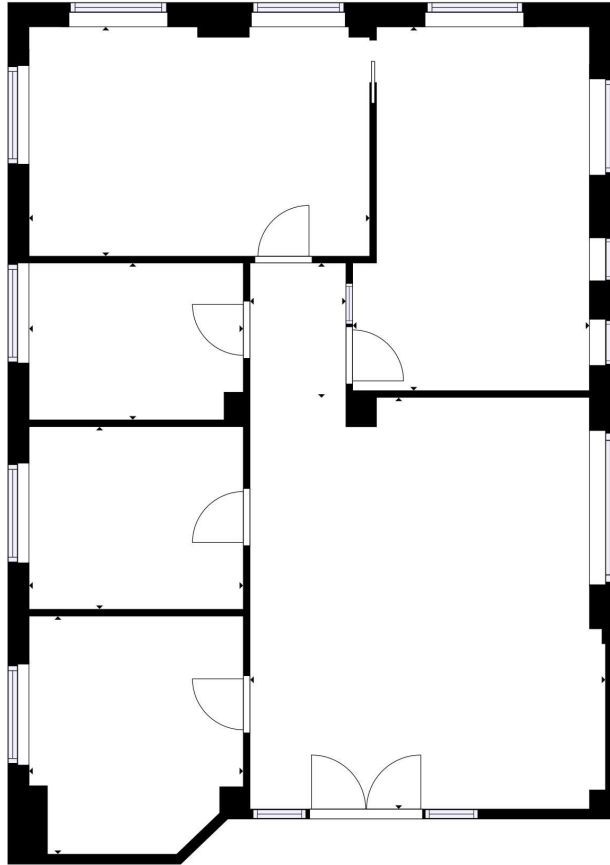
Senior Director
+1 206 215 9702
brandon.burmeister@cushwake.com

SUITE 200 - 1,712 SF

200 Broadway, Seattle, WA 98122



 [View Virtual Tour](#)



Contacts

ANDREW SHULTZ

Senior Director
+1 206 215 1645
andrew.shultz@cushwake.com

BRANDON BURMEISTER

Senior Director
+1 206 215 9702
brandon.burmeister@cushwake.com