

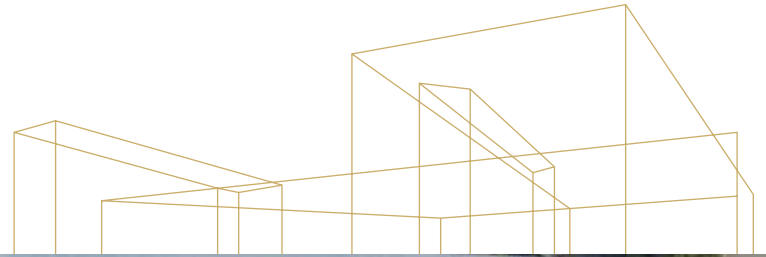
# WOODVIEW PARK

10,000 SF industrial space available for lease in Woodinville

14102 NE 189TH ST | WOODINVILLE, WA

# WOODVIEW PARK

14102 NE 189TH ST | WOODINVILLE, WA



## Suite 100

10,000 SF total

1,130 SF office

1,091 SF mezzanine

7,779 SF warehouse

1 grade-level door

2 dock-high doors

24' clear height

Available 30 days notice

## Contact brokers for rental rates:

**JASON BLOOM**

425.450.1102

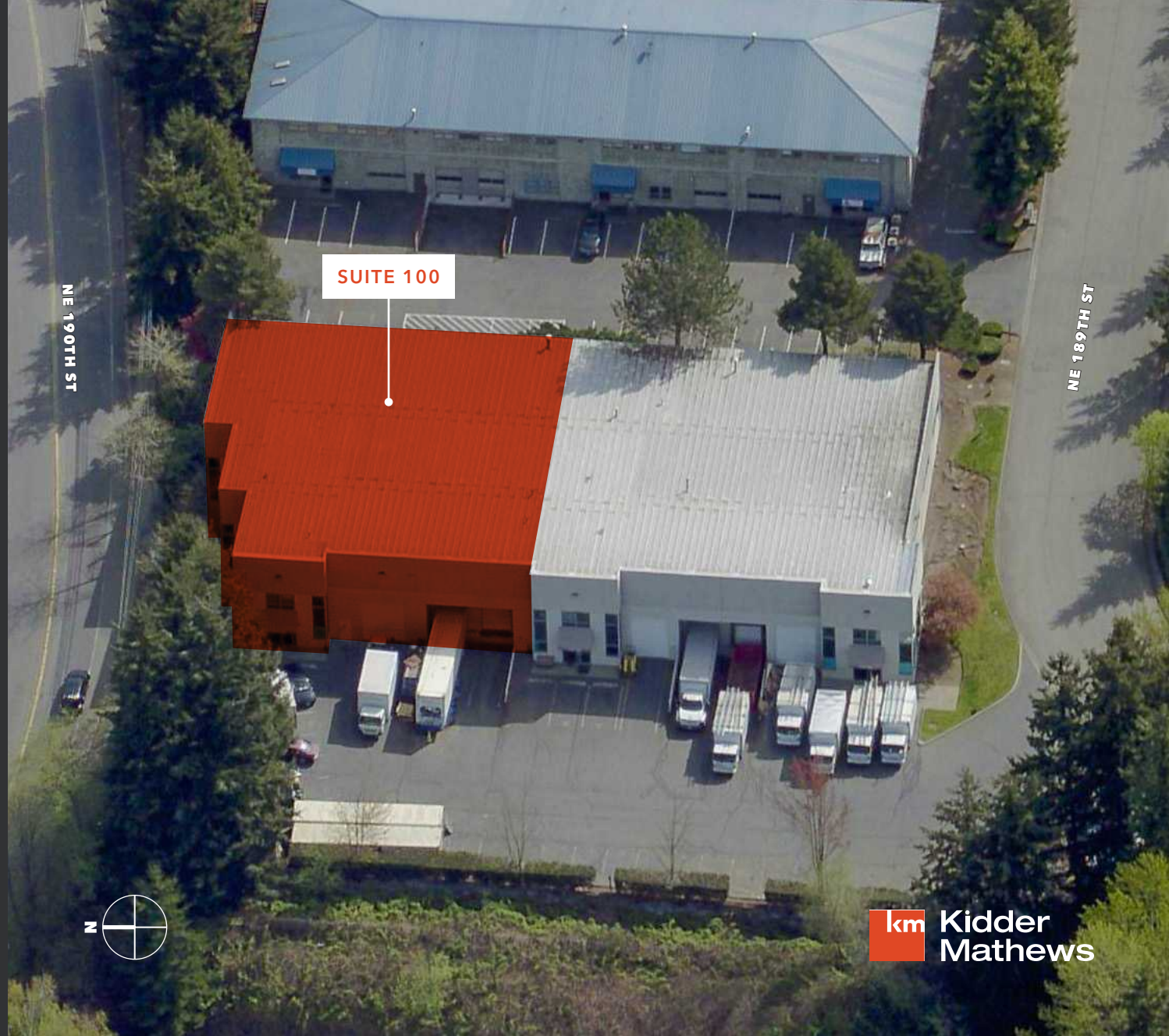
[jason.bloom@kidder.com](mailto:jason.bloom@kidder.com)

**TODD GAUTHIER**

425.450.1118

[todd.gauthier@kidder.com](mailto:todd.gauthier@kidder.com)

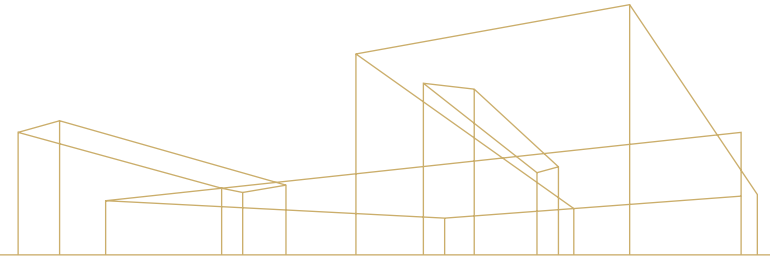
KIDDER.COM



**km** Kidder  
Mathews

# WOODVIEW PARK

14102 NE 189TH ST | WOODINVILLE, WA



Suite 100

**10,000 SF**


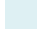


TOTAL

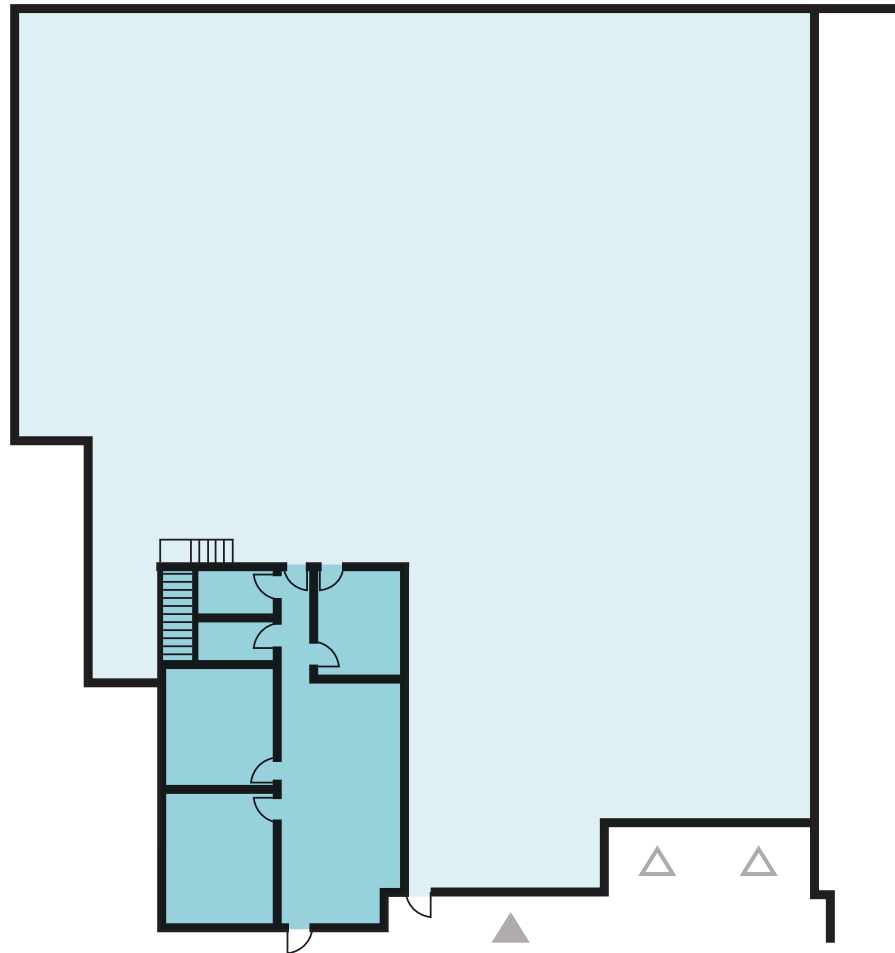
**7,779 SF**

WAREHOUSE

**1,130 SF**

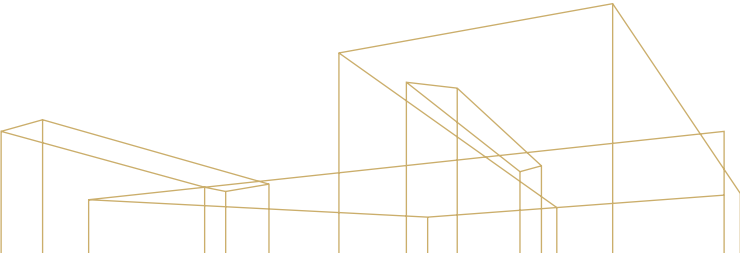
OFFICE

-  OFFICE
-  WAREHOUSE
-  GRADE-LEVEL LOADING
-  DOCK-HIGH LOADING



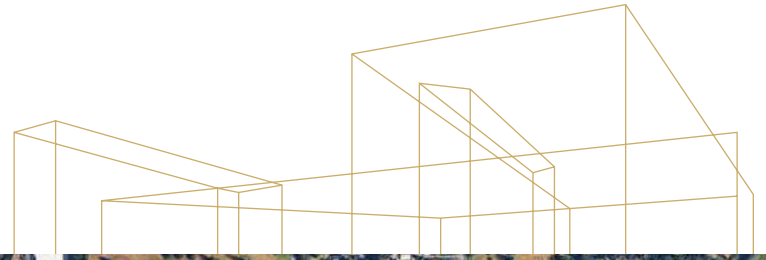
# WOODVIEW PARK

14102 NE 189TH ST | WOODINVILLE, WA



# WOODVIEW PARK

14102 NE 189TH ST | WOODINVILLE, WA





# WOODVIEW PARK

## For leasing information contact

**JASON BLOOM**

425.450.1102

[jason.bloom@kidder.com](mailto:jason.bloom@kidder.com)

**TODD GAUTHIER**

425.450.1118

[todd.gauthier@kidder.com](mailto:todd.gauthier@kidder.com)

[KIDDER.COM](http://KIDDER.COM)

This information supplied herein is from sources we deem reliable. It is provided without any representation, warranty, or guarantee, expressed or implied as to its accuracy. Prospective Buyer or Tenant should conduct an independent investigation and verification of all matters deemed to be material, including, but not limited to, statements of income and expenses. Consult your attorney, accountant, or other professional advisor.

