

BRIDGE POINT KENT 180

7730 S 202nd St | Kent, WA

 **BRIDGE**



NEW KENT INDUSTRIAL DEVELOPMENT

HIGHLIGHTS

- Stand-alone secure building
- Easy access to SR 167, I-5 and East Valley Highway
- 10 minutes to SEA International Airport
- 21 miles to Port of Tacoma & 17 miles to Port of Seattle
- Strong Kent labor force
- Class "A" corporate image
- LED lighting
- 11 trailer parking stalls

AVAILABLE SPACE

181,702 SF

OF BUILDINGS

1

CLEAR HEIGHT

40'

POWER

3000 AMPS

DELIVERY DATE

Q1 2025

NEWMARK

TAYLOR HOFF, SIOR

Senior Managing Director
taylor.hoff@nrmk.com
425-362-1388

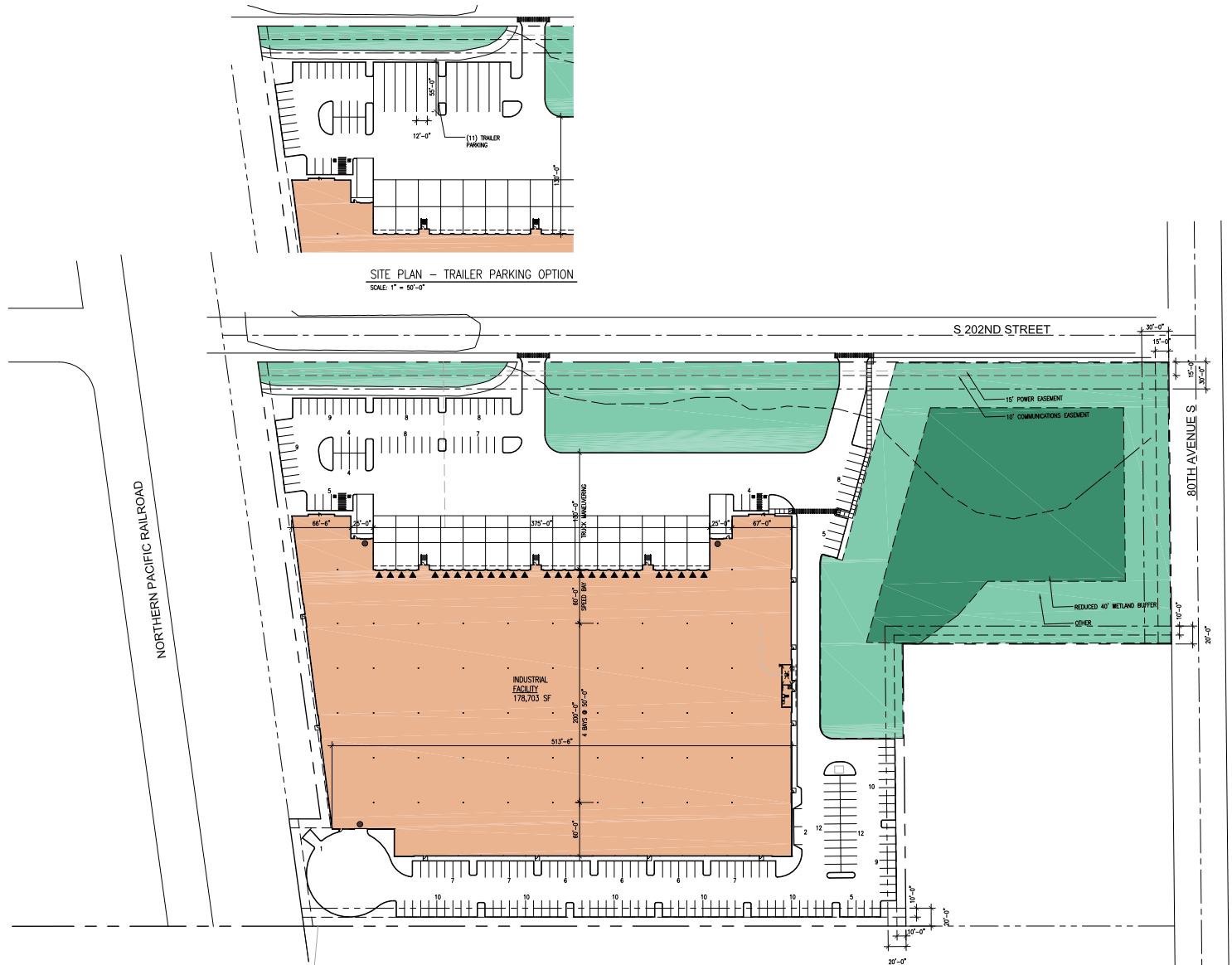
THAD MALLORY, SIOR

Vice Chairman
thad.mallory@nrmk.com
425-362-1410

BUILDING 1

181,702 SF

- Clear Height: 40'
- Exterior Docks: 27
- Drive-in Doors: 3
- Car Parking: 219
- Trailer Parking: 11
- Spec Office: 3,500 SF
- Mezzanine: 2,999 SF



ACCESS MAP

ACCESS TO SEATTLE CBD
VIA I-5 NORTH
22 MIN / 17 MIL

Access to / from I-5
9 min / 3.8 mil

Access to / from
West Valley Hwy (181)
4 min / 1.4 mil

Access to / from
Hwy 167
5 min / 1.6 mil

SITE



NEWMARK

BRIDGE