



2041 NW Myhre Rd, Silverdale

TOP FLOOR SUITE FEATURES

- 3,348 sq ft
- Balcony
- Elevator
- Kitchenette
- Conference Room
- Reception Area
- Keycard Access
- Private Offices & Bullpen
- Along Main Bus Routes
- Easy Access to Highway
- Adjacent to Kitsap County Hospital
- Overlooking Silverdale with Water and Mountain Views!

Schedule a viewing today!

> \$34/sf Full Service

360-207-0280

daniel@morseandbrown.com

www.morseandbrown.com



ELEVATE YOUR WORKSPACE

3,348 Sq. Ft. Office with Water and Mountain Views



Overlooking Silverdale with water and mountain views,
this open and dynamic area invites you to craft your vision into reality.



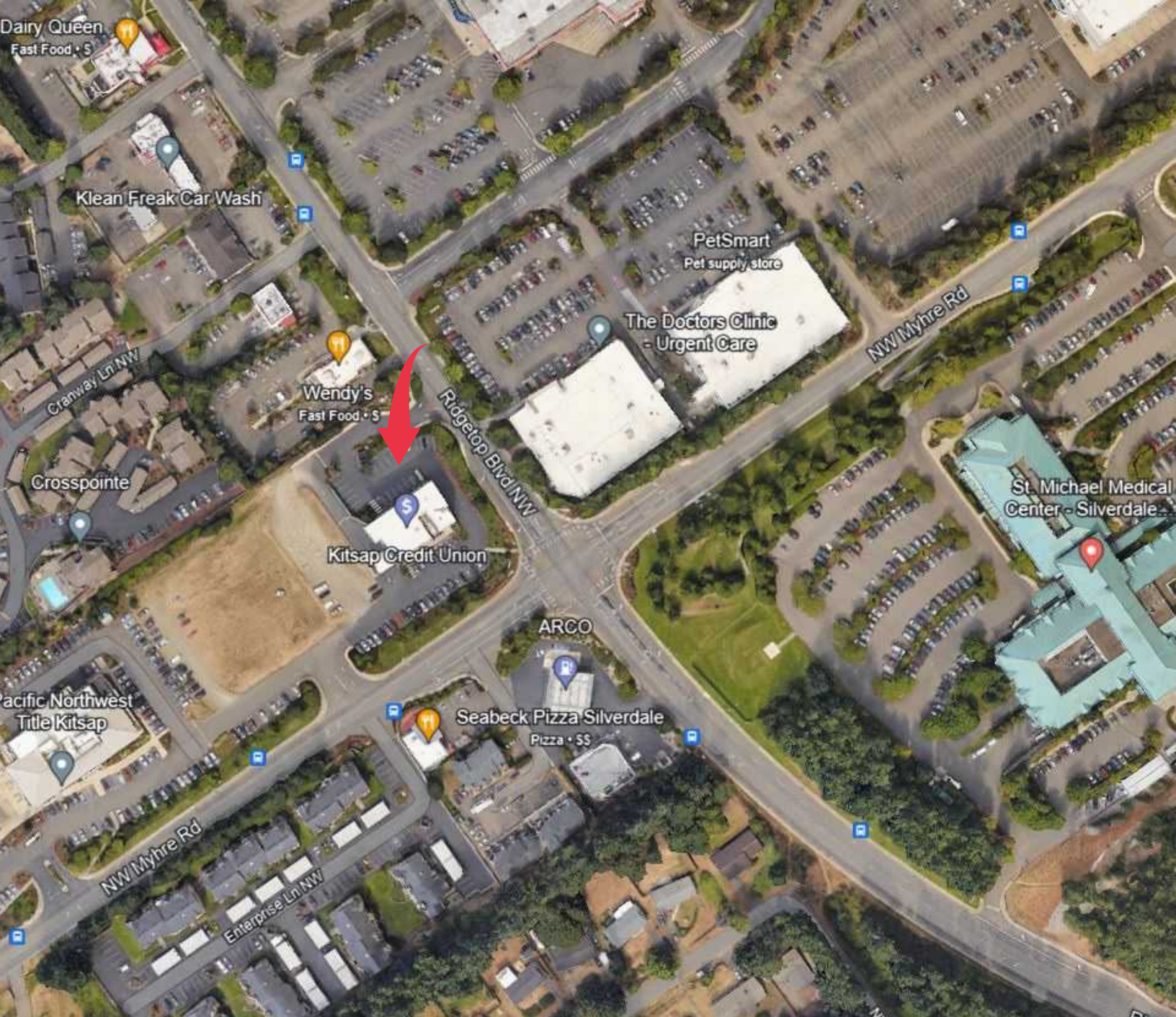
DANIEL MORSE

(360) 207-0280

daniel@morseandbrown.com



morseandbrown.com



MORSE & BROWN
COMMERCIAL PROPERTIES

360-207-0280



daniel@morseandbrown.com

