



Hassett Business Park

11332 - 11336 120TH AVE NE, KIRKLAND, WA 98033

FOR LEASE



Two new small warehouse spaces in move-in ready condition

THREE grade-level loading doors

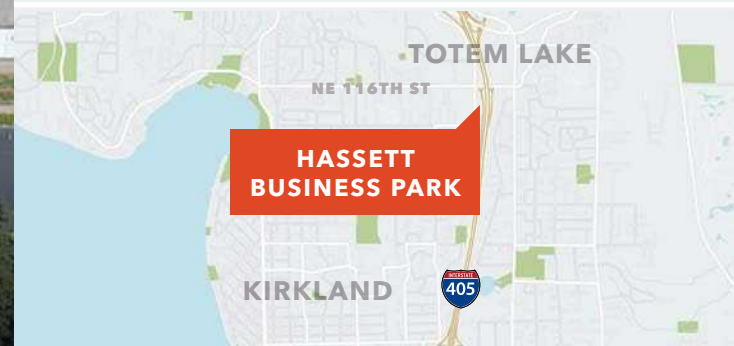
EASY freeway access

SIGNAGE opportunity with visibility to I-405

SUITE 123 - 4,400 SF (700 SF of office & 3,700 SF of warehouse)

SUITE 125 - 3,890 SF (300 SF of office & 3,590 SF of warehouse)

LEASE RATES call brokers



JASON BLOOM
425.450.1102
jason.bloom@kidder.com

TODD GAUTHIER
425.450.1118
todd.gauthier@kidder.com

JACK ALBRECHT
425.450.1114
jack.albrecht@kidder.com

**Kidder
Mathews**

This information supplied herein is from sources we deem reliable. It is provided without any representation, warranty, or guarantee, expressed or implied as to its accuracy. Prospective Buyer or Tenant should conduct an independent investigation and verification of all matters deemed to be material, including, but not limited to, statements of income and expenses. Consult your attorney, accountant, or other professional advisor.

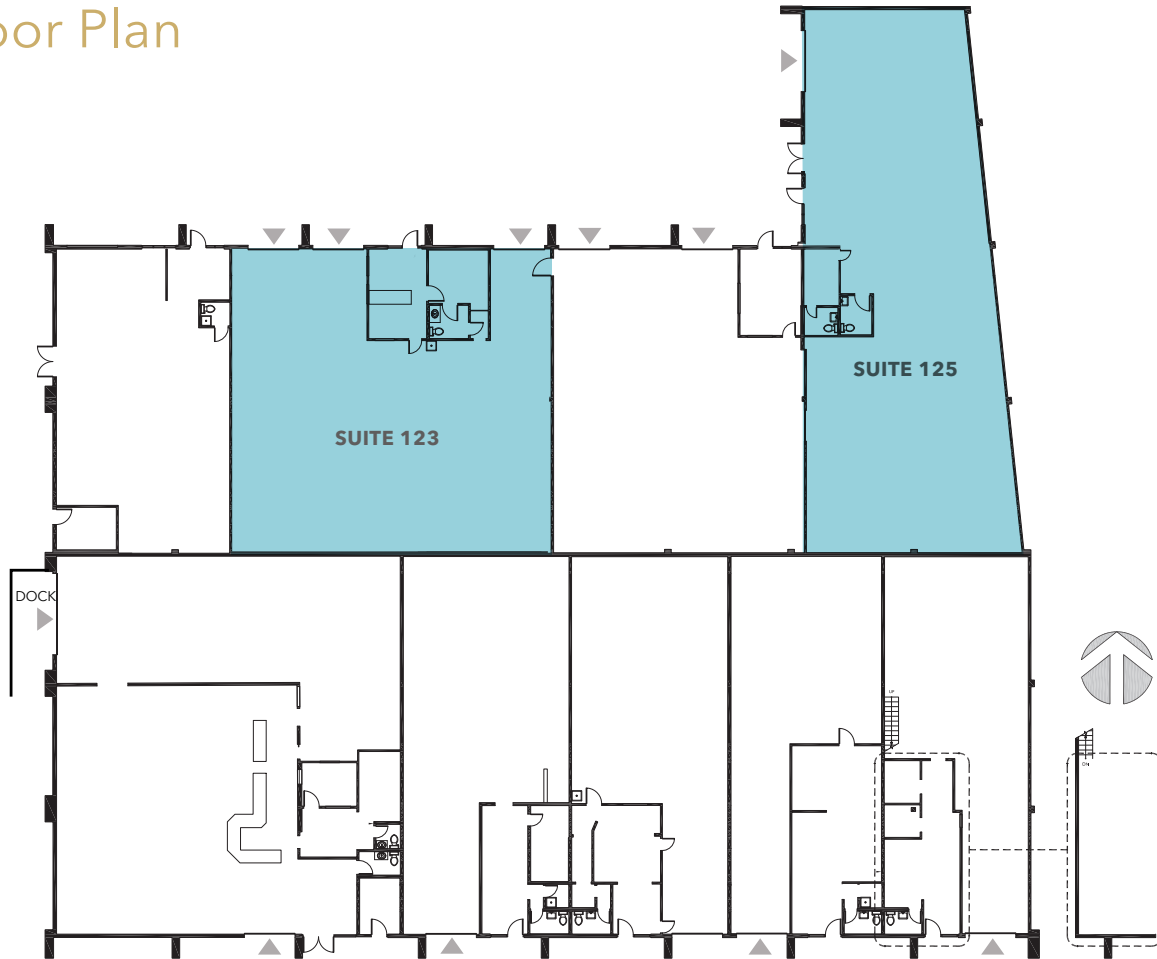
KIDDER.COM

FOR LEASE

Hassett Business Park

11332 - 11336 120TH AVE NE, KIRKLAND, WA 98033

Floor Plan



JASON BLOOM
425.450.1102
jason.bloom@kidder.com

TODD GAUTHIER
425.450.1118
todd.gauthier@kidder.com

JACK ALBRECHT
425.450.1114
jack.albrecht@kidder.com

 GRADE-LEVEL DOOR

KIDDER.COM

This information supplied herein is from sources we deem reliable. It is provided without any representation, warranty, or guarantee, expressed or implied as to its accuracy. Prospective Buyer or Tenant should conduct an independent investigation and verification of all matters deemed to be material, including, but not limited to, statements of income and expenses. Consult your attorney, accountant, or other professional advisor.

Suite 123

4,400 SF total size

3,700 SF warehouse

700 SF office

THREE grade-level loading doors

AVAILABLE immediately

CALL broker for lease rates

Suite 125

3,890 SF total size

3,590 SF warehouse

300 SF office

ONE grade-level loading door



 **Kidder Mathews**