

# Maple Street Office Building

Suite 110

1180 NW Maple Street  
Issaquah, WA  
[www.cbre.com/bellevue](http://www.cbre.com/bellevue)



## Highlights

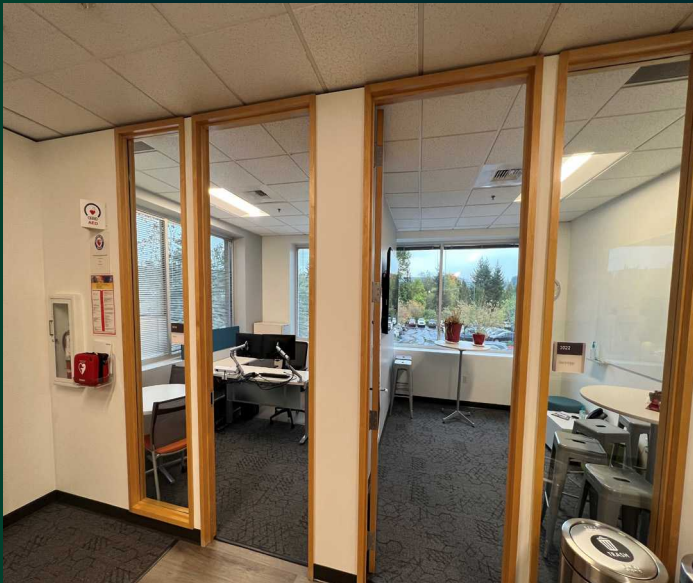
**Suite 110: 2,983 SF**

**\$30.00/SF, NNN**

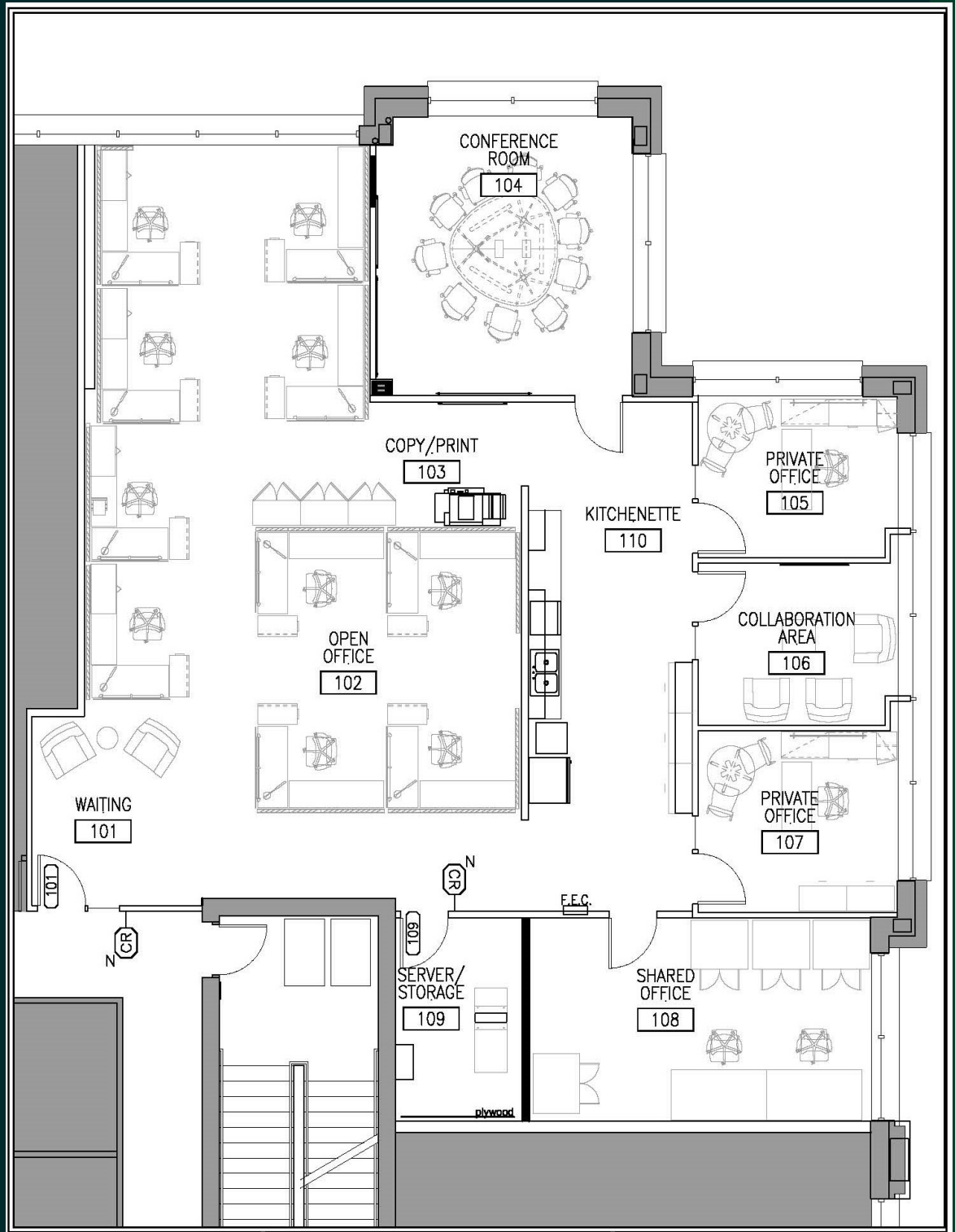
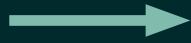
- + Plug-N-Play space with furniture
- + Available immediately
- + Great corner space with 3-4 private offices, 10 workstations, 1-2 conference rooms, server room with dedicated cooling and kitchenette.
- + 3.3/1,000 SF parking ratio with covered stalls available
- + Close proximity to the Issaquah Transit Center and various retail amenities.
- + Sublease term expires August 31, 2026

# Maple Street Office Building

1180 NW Maple Street, Suite 110 | Issaquah, WA



Suite 110  
2, 983 SF



# Maple Street Office Building

1180 NW Maple Street, Suite 110 | Issaquah, WA 98011

# For Sublease



## Contact Us

**Pete Hollomon**

+1 425 444 4886

pete.hollomon@cbre.com

CBRE, Inc.

929 108th Ave NE, Suite 700.

Bellevue, WA 98004

© 2023 CBRE, Inc. All rights reserved. This information has been obtained from sources believed reliable, but has not been verified for accuracy or completeness. You should conduct a careful, independent investigation of the property and verify all information. Any reliance on this information is solely at your own risk. CBRE and the CBRE logo are service marks of CBRE, Inc. All other marks displayed on this document are the property of their respective owners, and the use of such logos does not imply any affiliation with or endorsement of CBRE. Photos herein are the property of their respective owners. Use of these images without the express written consent of the owner is prohibited. SE 11.1.2023

[www.cbre.com/bellevue](http://www.cbre.com/bellevue)

# CBRE