

Two Union Square

601 Union St

601 Union St.
Seattle, WA 98101



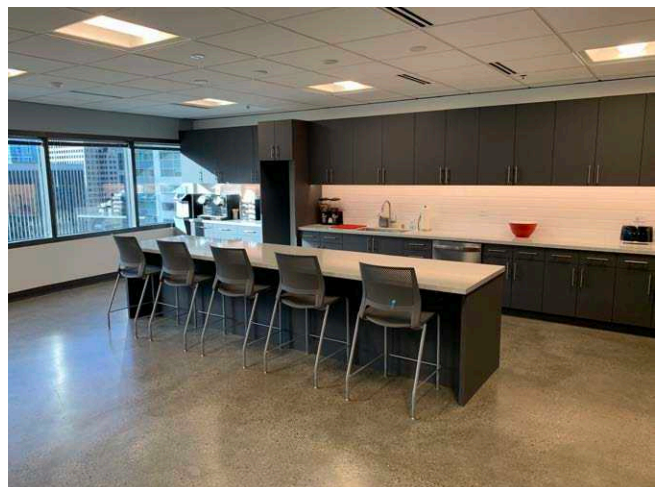
Two Union Square

601 Union St. | Seattle, WA 98101



Space Details

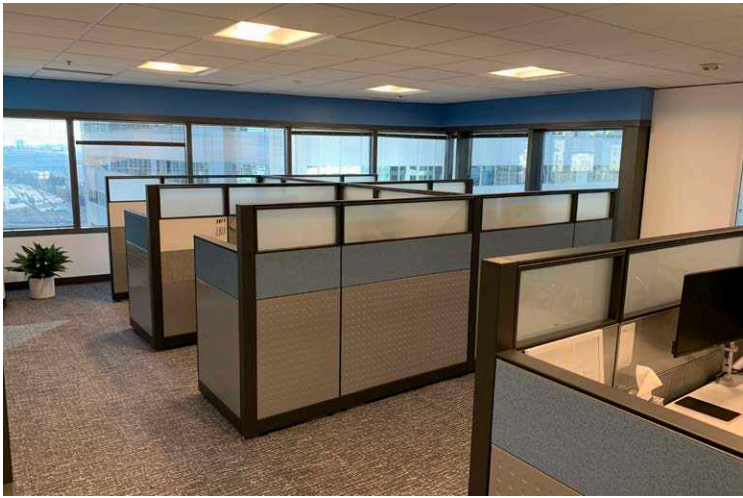
- Plug & Play sublease available; LXD 11/30/2027
- Suite 1825: 10,813 RSF
- Modern finishes with TI's and buildout completed in 2022
- Efficient layout with open area seating, small/medium/large meeting rooms, large kitchen, wellness room, and reception area
- Mid-rise views of Seattle CBD and Capitol Hill
- Class A trophy building with numerous amenities including lunch and coffee options, fitness center, secure parking, dry cleaning, and outdoor plazas
- Immediate access to I-5 North ramp
- Call brokers for rates



For Sublease



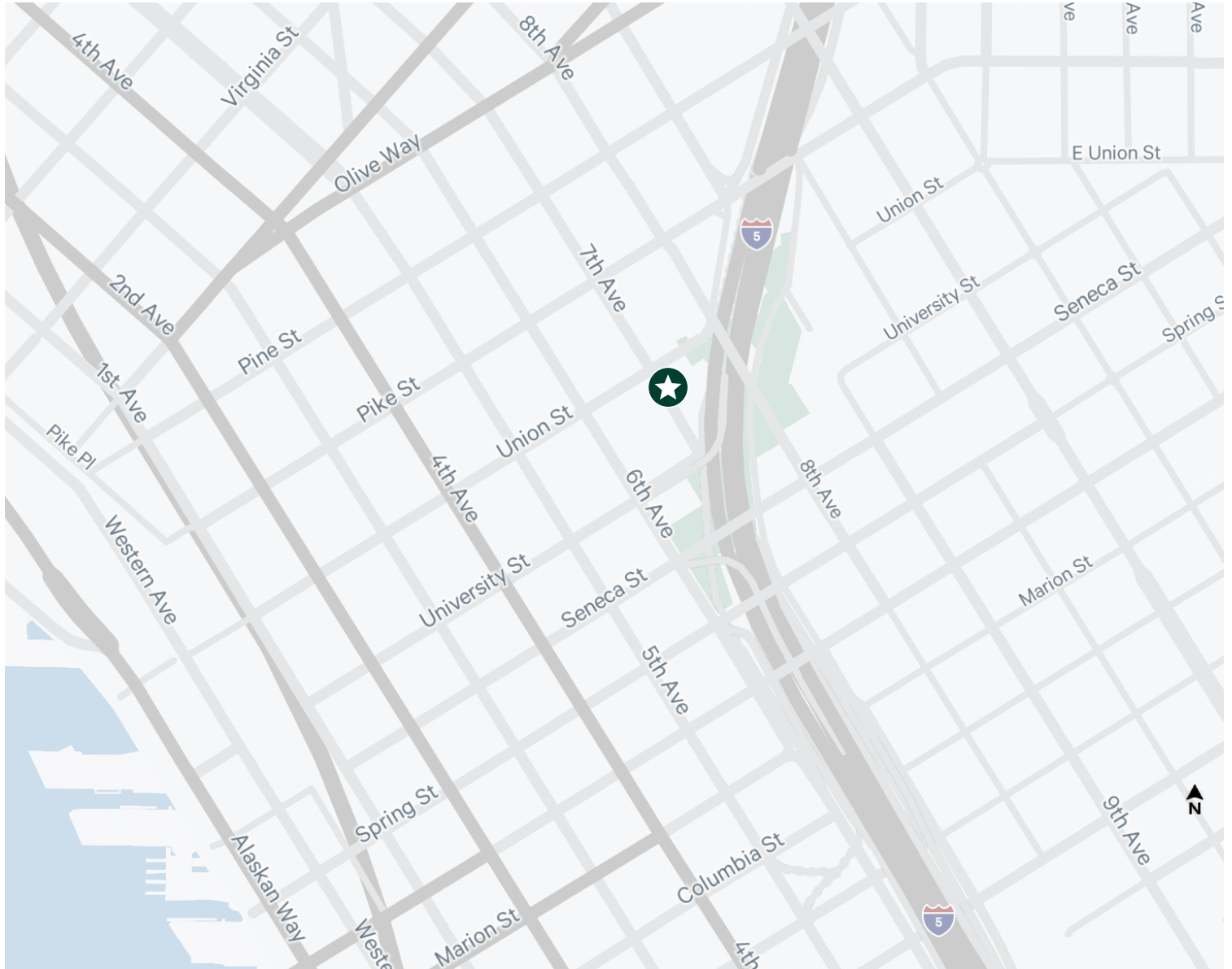
Available Sublease



Two Union Square

601 Union St. | Seattle, WA 98101

For Sublease



Contact Us

Dan Marconi

Senior Associate

+1 206 292 6172

dan.marconi@cbre.com

Michael Dash

Vice Chairman

+1 206 292 6170

michaeldash@cbre.com

© 2023 CBRE, Inc. All rights reserved. This information has been obtained from sources believed reliable, but has not been verified for accuracy or completeness. You should conduct a careful, independent investigation of the property and verify all information. Any reliance on this information is solely at your own risk. CBRE and the CBRE logo are service marks of CBRE, Inc. All other marks displayed on this document are the property of their respective owners, and the use of such logos does not imply any affiliation with or endorsement of CBRE. Photos herein are the property of their respective owners. Use of these images without the express written consent of the owner is prohibited. 11.08.23PN