

For Lease

EASTSIDE PLAZA BUILDING 4

1300 QUINCE ST SE, OLYMPIA, WA

Downtown Olympia

PLUM ST SE

UNION AVE SE

EASTSIDE ST SE



KIDDER.COM

km Kidder Mathews

HIGHLY- ACCESSIBLE LOCATION

48,320 SF (divisible)

\$22.00/SF, modified gross

Tenant improvements negotiable

Generator back-up

Class A

Adjacent to I-5

3 MIN

INTERSTATE-5

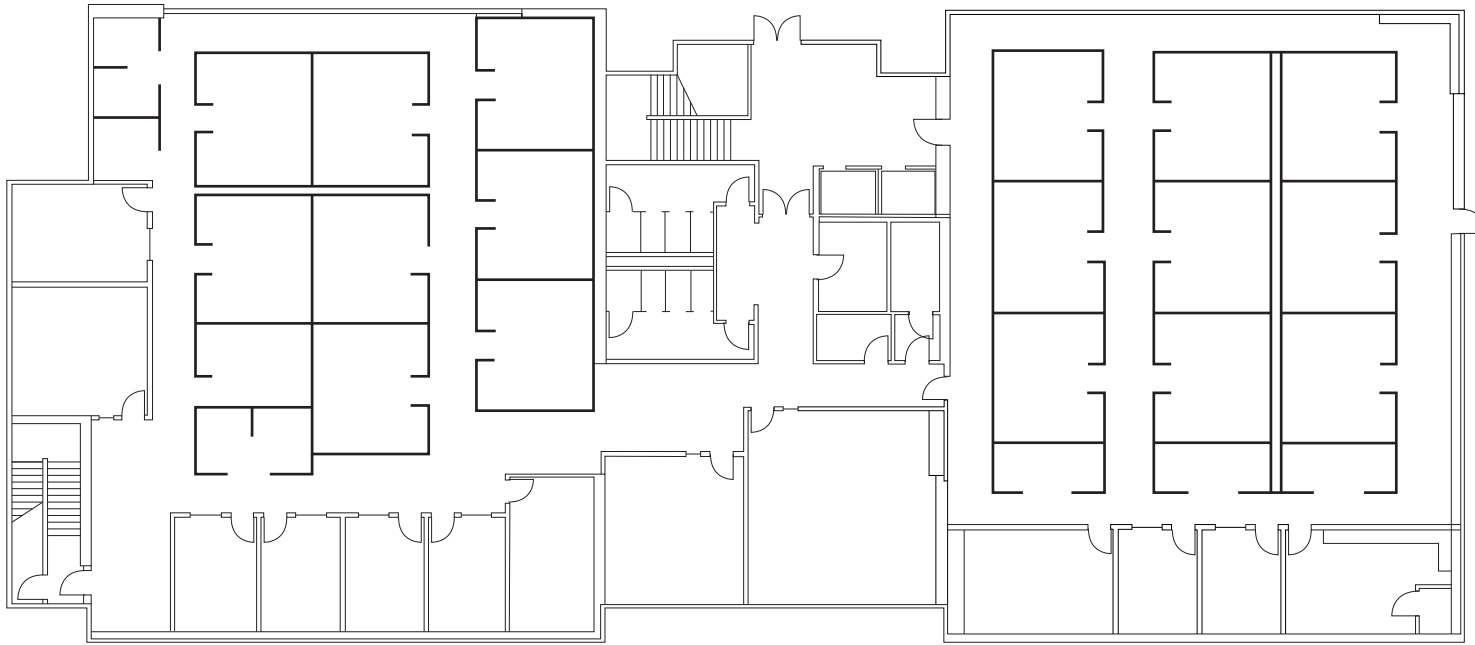
3 MIN

DOWNTOWN OLYMPIA





FIRST FLOOR



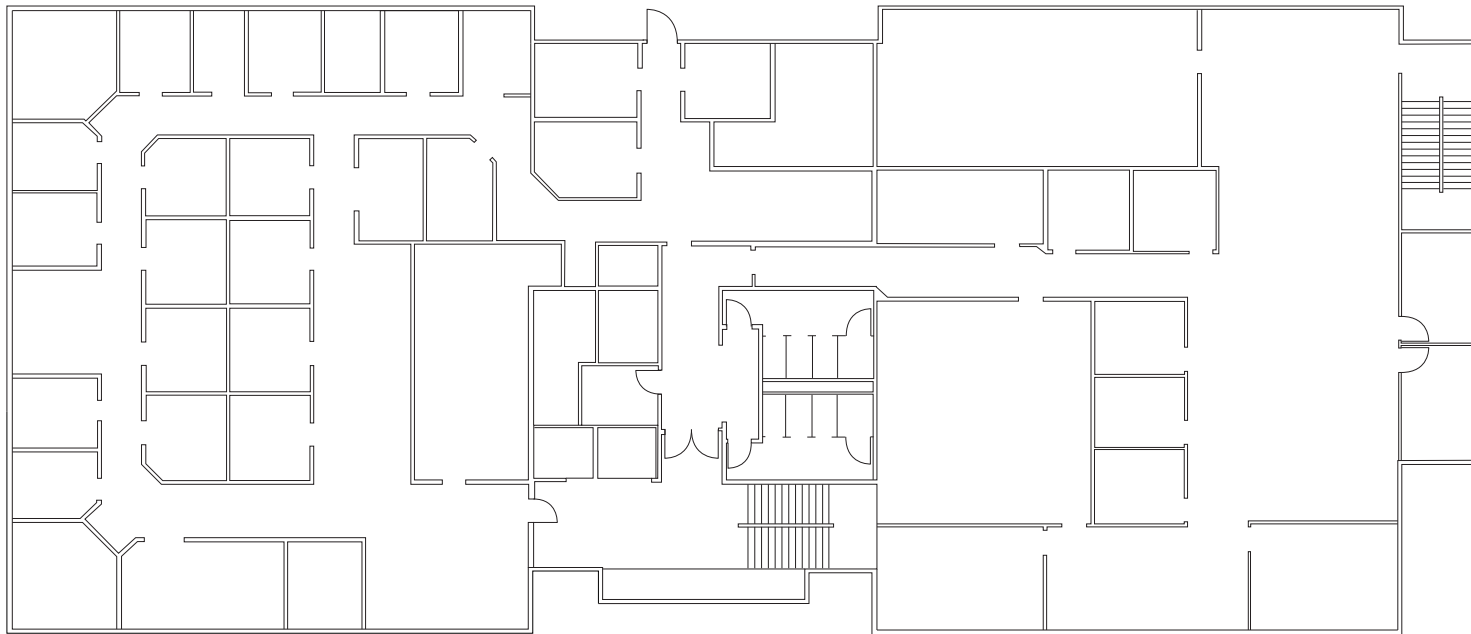
13,536 SF

AVAILABLE

\$22.00

LEASE RATE (SF/YR)

SECOND FLOOR



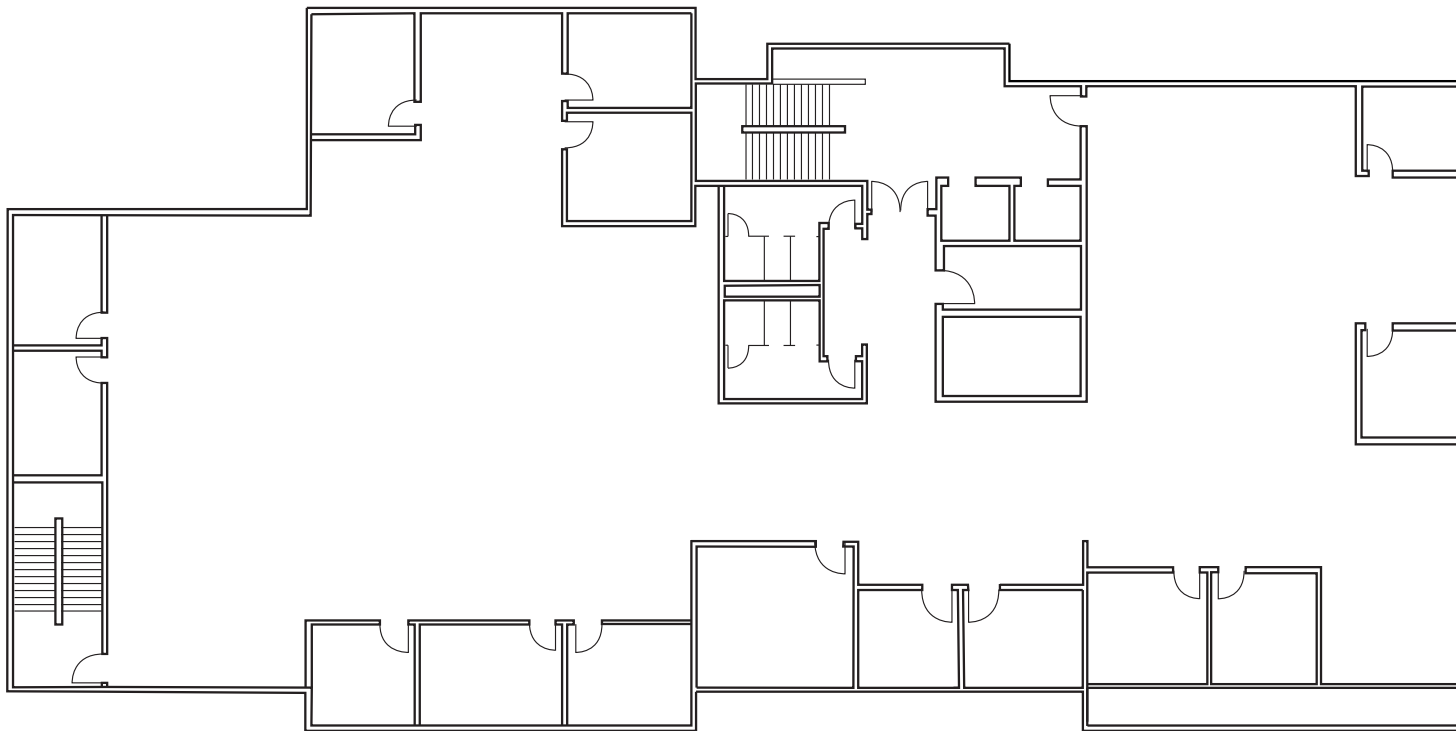
13,536 SF

AVAILABLE

\$22.00

LEASE RATE (SF/YR)

THIRD FLOOR



10,624 SF

AVAILABLE

\$22.00

LEASE RATE (SF/YR)

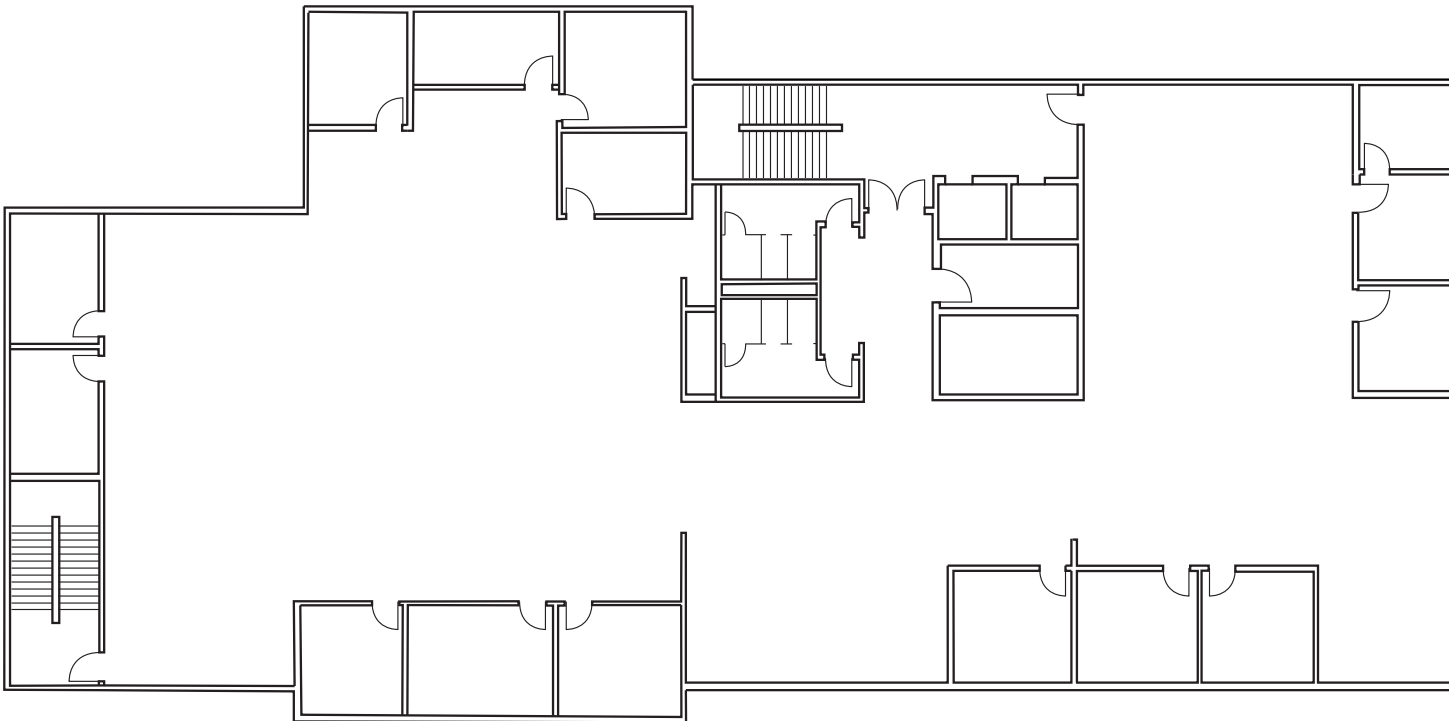
FOURTH FLOOR

10,624 SF

AVAILABLE

\$22.00

LEASE RATE (SF/YR)



EASTIDE PLAZA BUILDING 4

Exclusively leased by

EVAN PARKER
360.705.0174
evan.parker@kidder.com

AMY HARDING
360.705.1377
amy.harding@kidder.com

KIDDER.COM

This information supplied herein is from sources we deem reliable. It is provided without any representation, warranty, or guarantee, expressed or implied as to its accuracy. Prospective Buyer or Tenant should conduct an independent investigation and verification of all matters deemed to be material, including, but not limited to, statements of income and expenses. Consult your attorney, accountant, or other professional advisor.

