

TIMES SQUARE BUILDING

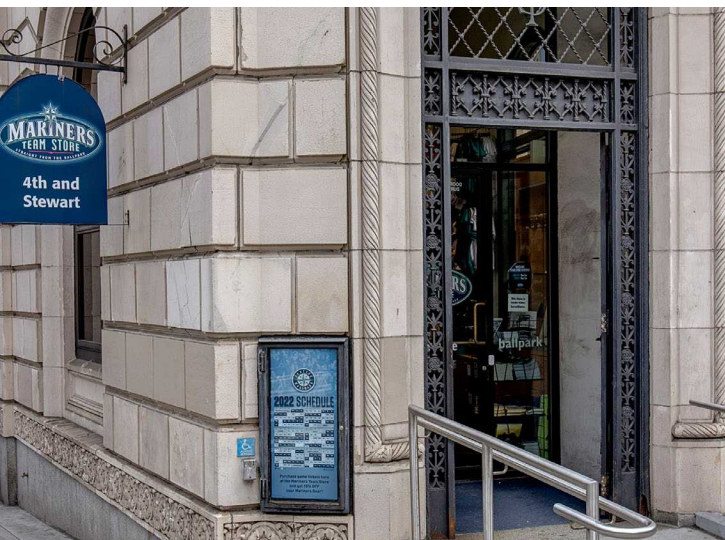
414 OLIVE WAY, SEATTLE, WA 98101

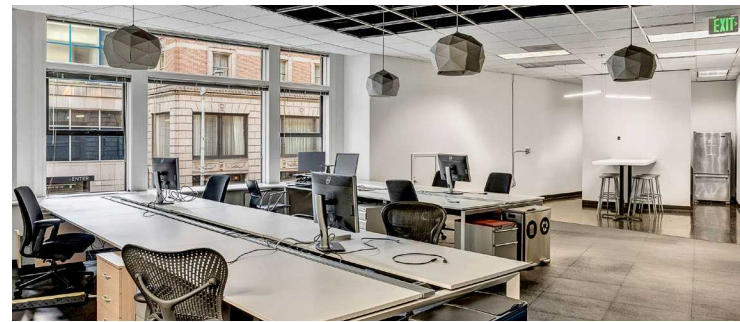
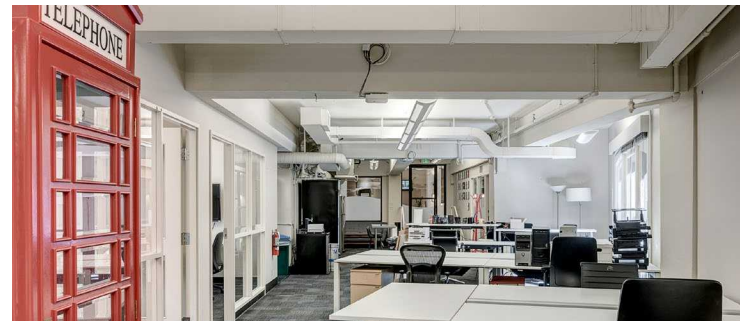
NEWMARK

The Vance Corporation

BUILDING HIGHLIGHTS

- Registered National Historic Landmark building with a unique structure and high ceilings
- Excellent access to I-5 and public transportation. Directly across the street from Westlake Station and SLU Streetcar
- Street-level retailers include the Seattle Mariners Store, Indochino, and Alexandra's Designer Consignment

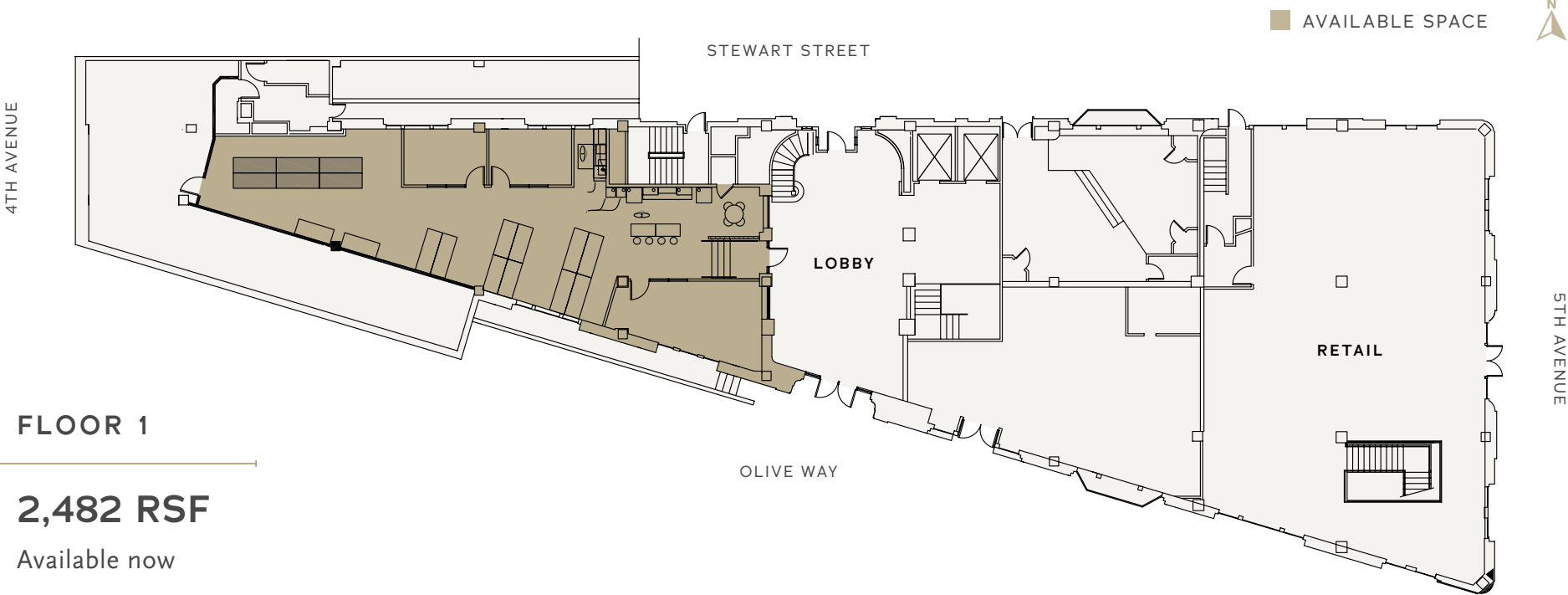




AVAILABILITIES

FLOOR	RSF	AVAILABILITY	SPACE NOTES
1	2,482 RSF	Now	Two private offices, conference room, and open work space
2	6,817 RSF	Now	Four to five private offices, two conference rooms, kitchen, and open workspace
4	9,838 RSF	Nov 1, 2024	Conference rooms, kitchen, and open workspace
5	14,816 RSF	Nov 1, 2024	Includes a mezzanine level

FLOOR 1 PLAN



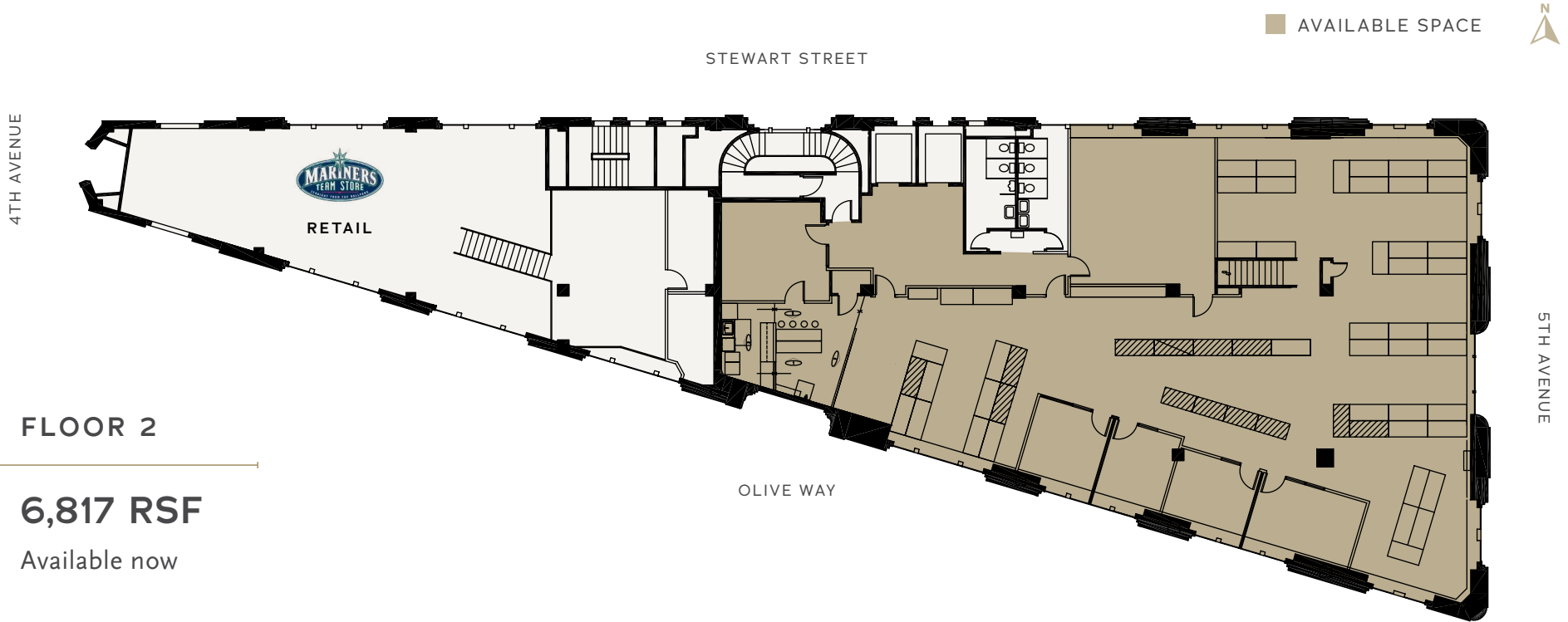
FLOOR 1

2,482 RSF

Available now



FLOOR 2 PLAN



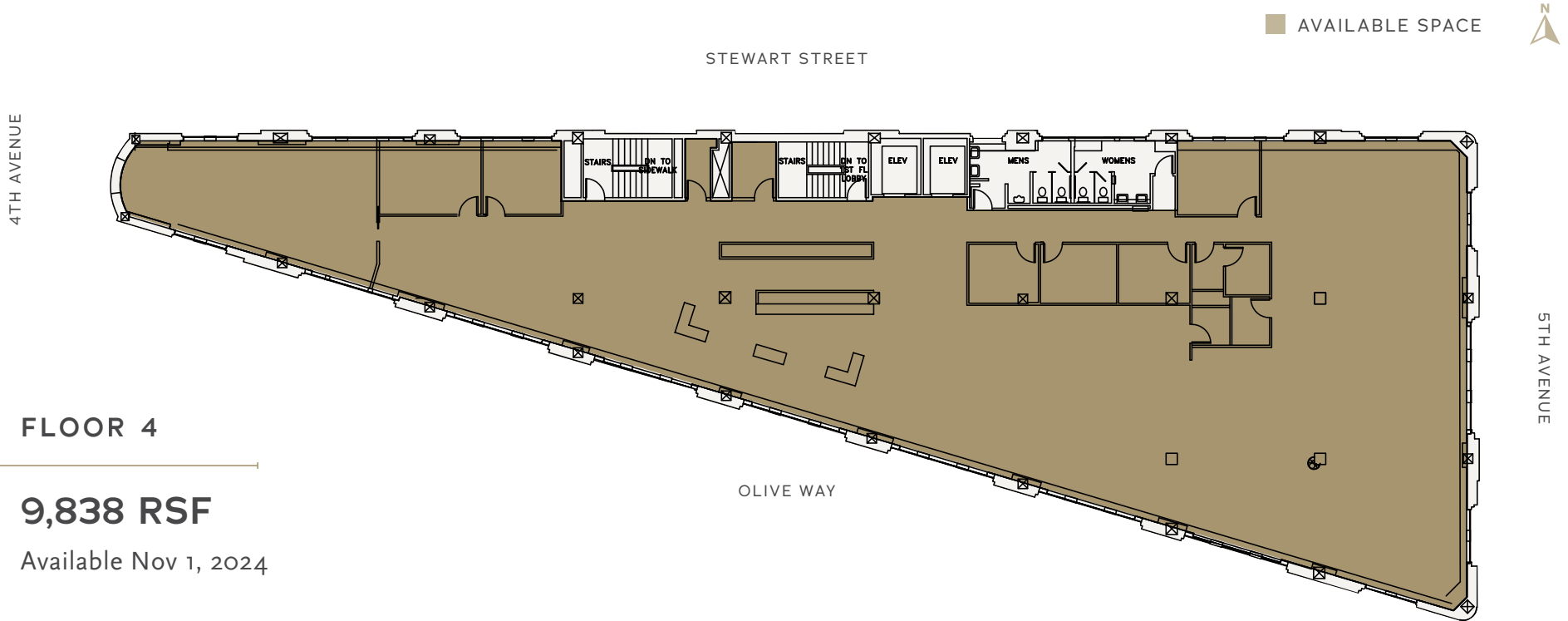
FLOOR 2

6,817 RSF

Available now



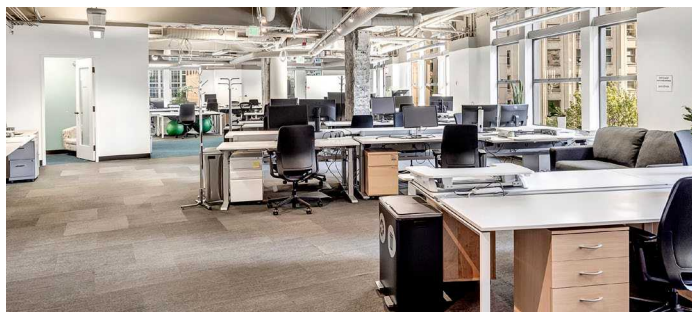
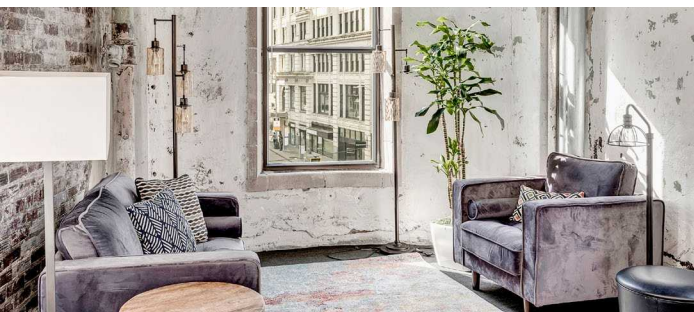
FLOOR 4 PLAN



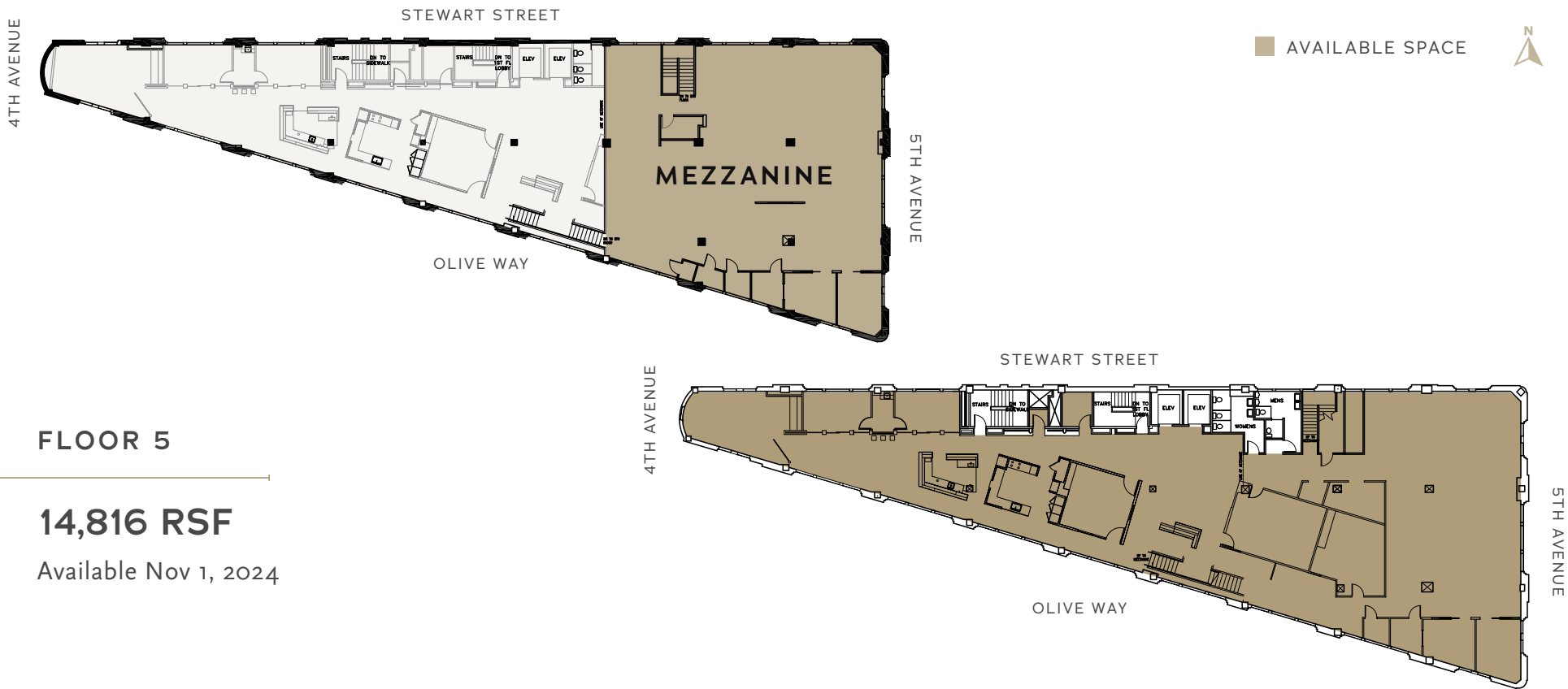
FLOOR 4

9,838 RSF

Available Nov 1, 2024



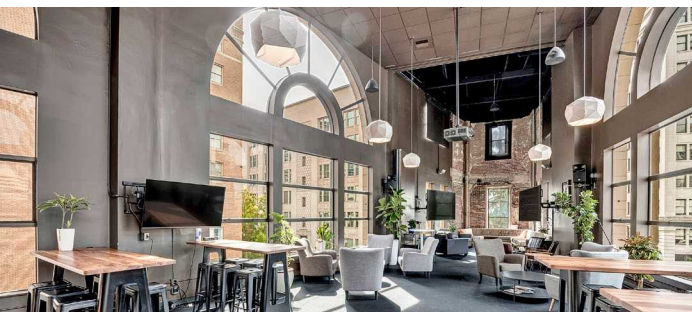
FLOOR 5 PLAN



FLOOR 5

14,816 RSF

Available Nov 1, 2024



TIMES SQUARE BUILDING

414 OLIVE WAY
SEATTLE, WA 98101

JESSE OTTELE
206-452-4529
jesse.ottele@nmrk.com

TRACY TURNURE
425-372-9923
tracy.turnure@nmrk.com

The Vance
Corporation

NEWMARK



The information contained herein has been obtained from sources deemed reliable but has not been verified and no guarantee, warranty or representation, either express or implied, is made with respect to such information. Terms of sale or lease and availability are subject to change or withdrawal without notice.