



# North Campus Business Center Bldg C

12125 HARBOUR REACH DR, MUKILTEO, WA 98275

## FOR LEASE



High-image office  
& warehouse space  
near Harbour Pointe  
Golf Course

**LOCATED** just off Mukilteo  
Speedway

**EXCELLENT** retail and restaurant  
amenities

**HIGH-IMAGE** concrete tilt  
construction

**EASY ACCESS** to I-5 & I-405

**RARE**, smaller space availabilities  
to choose from

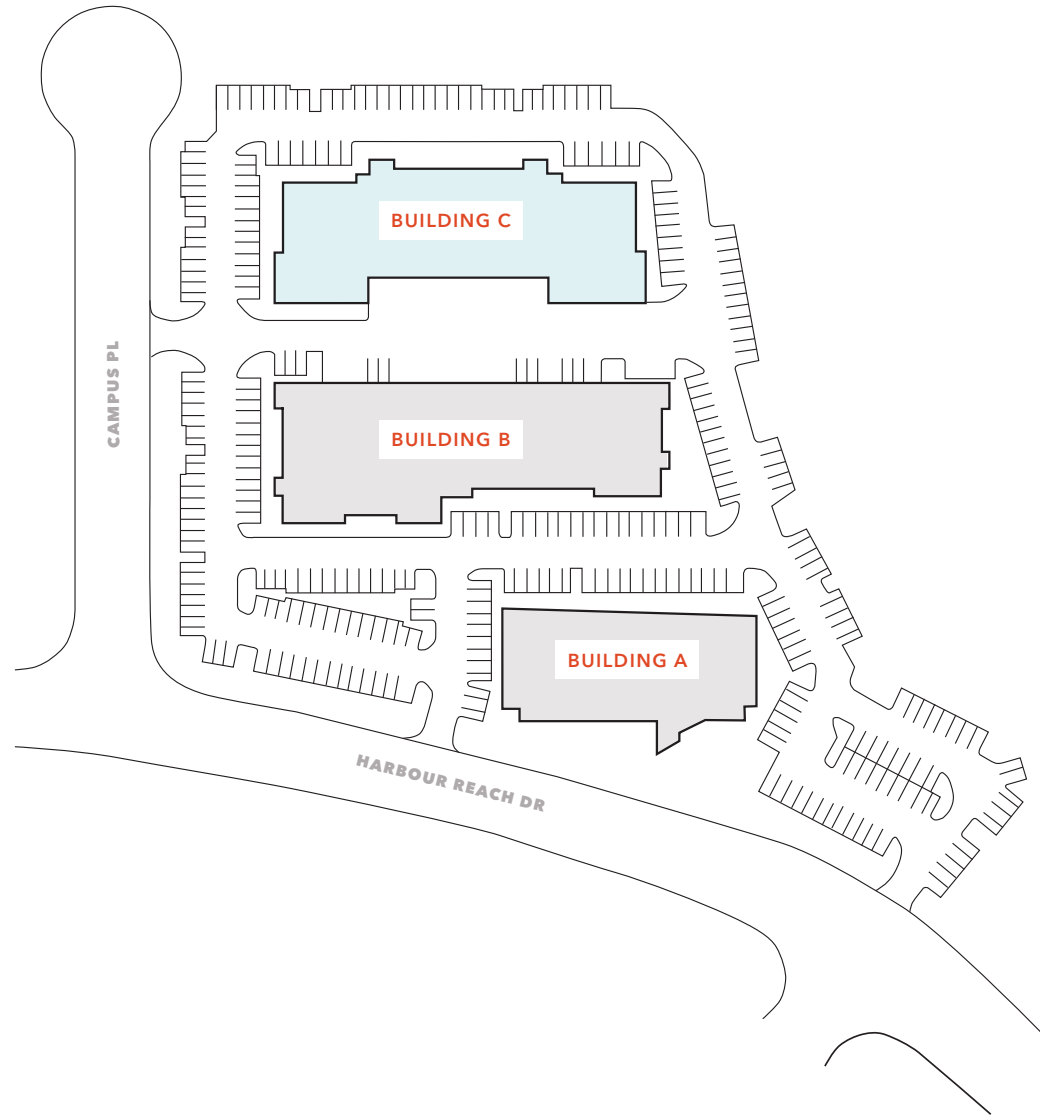
**FLEXIBLE** space configurations

**RATES:** \$1.50/SF, NNN

**FOR LEASE**

# North Campus Business Center Bldg C

12125 HARBOUR REACH DR, MUKILTEO, WA 98275



[KIDDER.COM](http://KIDDER.COM)

This information supplied herein is from sources we deem reliable. It is provided without any representation, warranty, or guarantee, expressed or implied as to its accuracy. Prospective Buyer or Tenant should conduct an independent investigation and verification of all matters deemed to be material, including, but not limited to, statements of income and expenses. Consult your attorney, accountant, or other professional advisor.

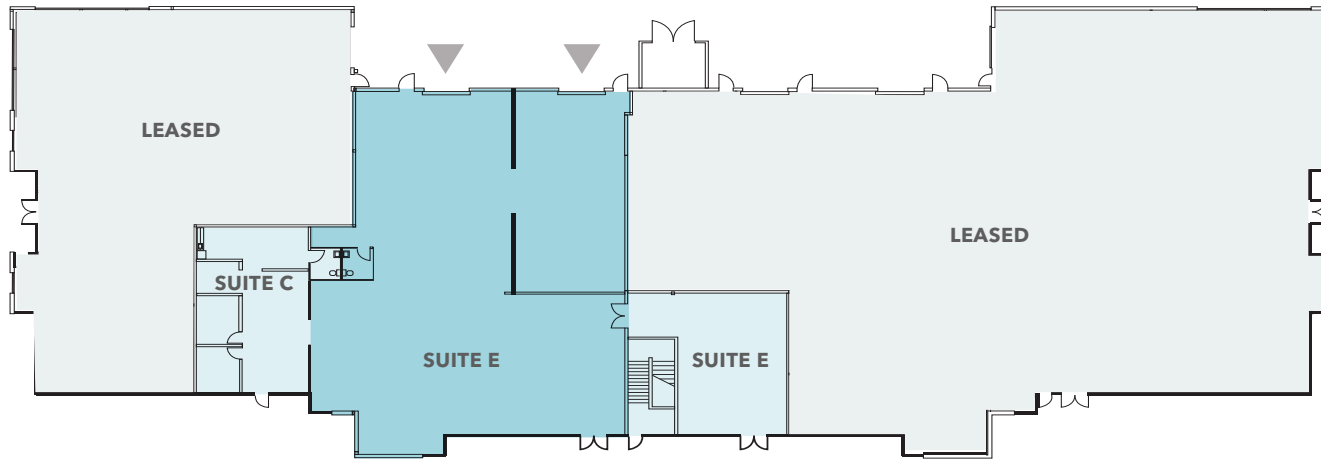
**km** Kidder  
Mathews

**FOR LEASE**

# North Campus Business Center Bldg C

12125 HARBOUR REACH DR, MUKILTEO, WA 98275

## First Floor



### FIRST FLOOR AVAILABILITIES

Suite C	1,237 SF
Suite E	7,919 SF (1,573 SF of Office)

**MATTHEW HAGEN, SIOR**  
425.283.5782  
[matt.hagen@kidder.com](mailto:matt.hagen@kidder.com)

**MATTHEW P. HENN**  
206.890.7800  
[matt.henn@kidder.com](mailto:matt.henn@kidder.com)

▲ GRADE-LEVEL LOADING

■ WAREHOUSE

■ OFFICE

[KIDDER.COM](http://KIDDER.COM)

This information supplied herein is from sources we deem reliable. It is provided without any representation, warranty, or guarantee, expressed or implied as to its accuracy. Prospective Buyer or Tenant should conduct an independent investigation and verification of all matters deemed to be material, including, but not limited to, statements of income and expenses. Consult your attorney, accountant, or other professional advisor.

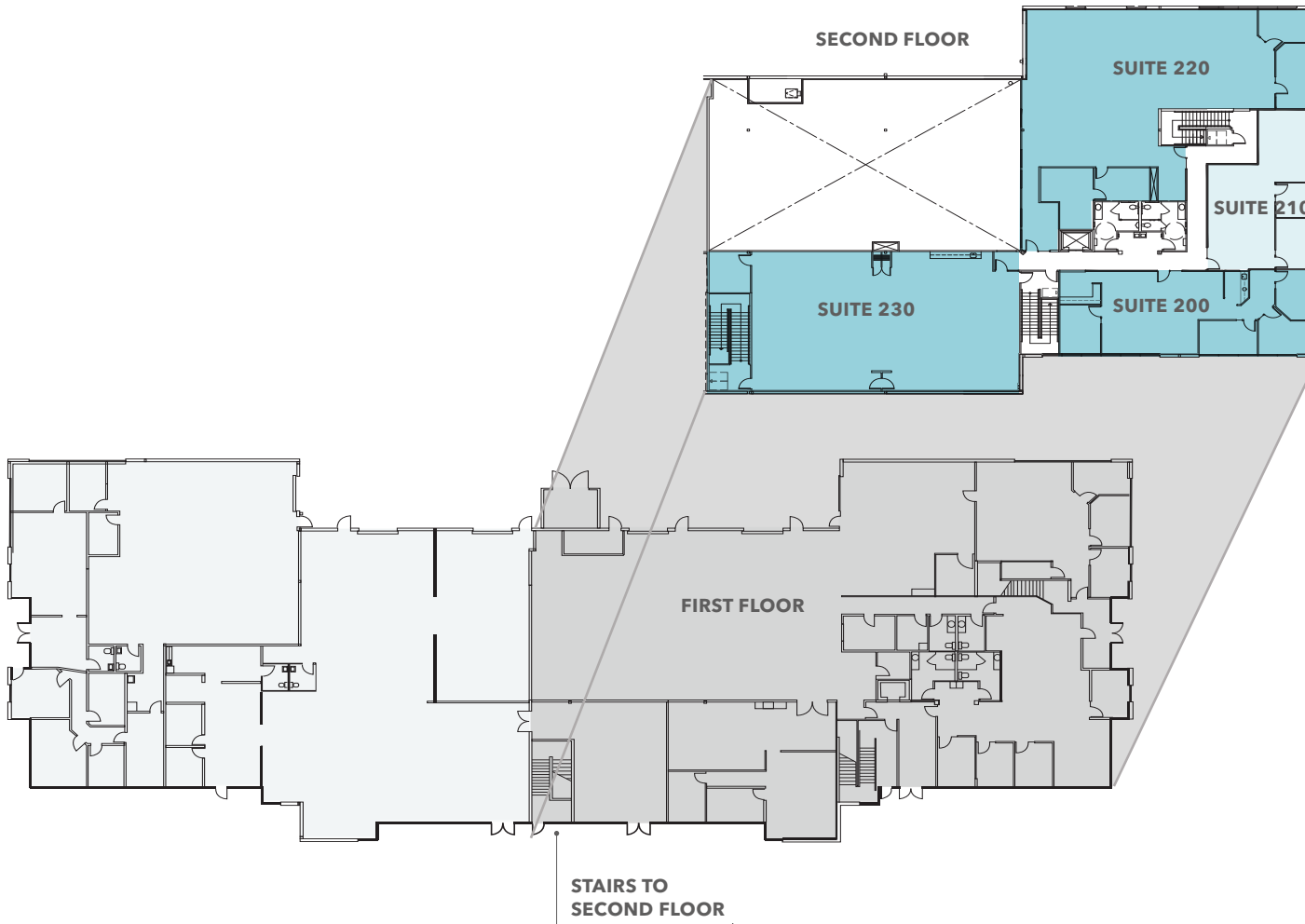
**km** Kidder Mathews

**FOR LEASE**

# North Campus Business Center Bldg C

12125 HARBOUR REACH DR, MUKILTEO, WA 98275

## Second Floor



### SECOND FLOOR OFFICE AVAILABILITIES

Suite 230	3,707 SF
Suite 200	1,830 SF
Suite 220	3,895 SF
Suite 210	1,225 SF

Up to 10,657 SF of contiguous office area available.

**MATTHEW HAGEN, SIOR**  
425.283.5782  
[matt.hagen@kidder.com](mailto:matt.hagen@kidder.com)

**MATTHEW P. HENN**  
206.890.7800  
[matt.henn@kidder.com](mailto:matt.henn@kidder.com)

[KIDDER.COM](http://KIDDER.COM)

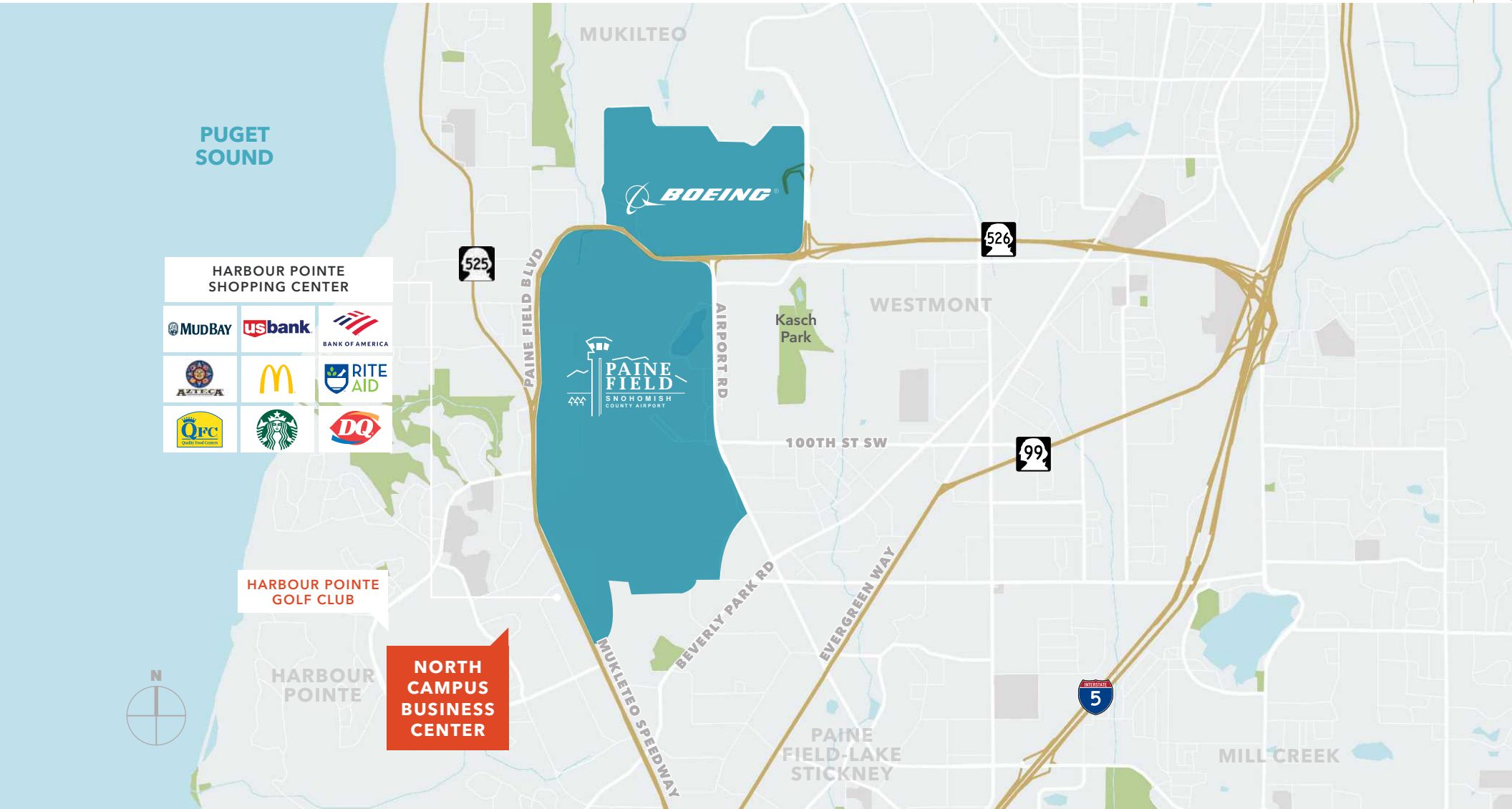
This information supplied herein is from sources we deem reliable. It is provided without any representation, warranty, or guarantee, expressed or implied as to its accuracy. Prospective Buyer or Tenant should conduct an independent investigation and verification of all matters deemed to be material, including, but not limited to, statements of income and expenses. Consult your attorney, accountant, or other professional advisor.



FOR LEASE

# North Campus Business Center Bldg C

12125 HARBOUR REACH DR, MUKILTEO, WA 98275



KIDDER.COM

This information supplied herein is from sources we deem reliable. It is provided without any representation, warranty, or guarantee, expressed or implied as to its accuracy. Prospective Buyer or Tenant should conduct an independent investigation and verification of all matters deemed to be material, including, but not limited to, statements of income and expenses. Consult your attorney, accountant, or other professional advisor.

**km** Kidder Mathews