



FOR LEASE

# Queen Anne Square

200-220 WEST MERCER STREET, SEATTLE



## Available Suites 2,440 up to 11,221 SF

**AMENITIES INCLUDE** showers, bike storage, and conference room

**PARKING RATIO:** 1.95/1,000 RSF

**ELECTRONIC CAR** parking access with charging station

**WITHIN WALKING DISTANCE** of many convenient amenities nearby

**CLOSE TO** Rapid Ride, Space Needle, Seattle Center, and Key Arena

**NEARBY DINING AND SHOPPING** includes cafes, fine dining, retail, and grocery stores

**LESS THAN** a 15-minute walk to South Lake Union and 1.5 miles from the Downtown Central Business District

**JUST MINUTES** to drive to downtown Seattle, Interstate 5, and Highway 99

**SCENIC VIEWS** of Elliott Bay, the Olympic Mountains, and a large landscaped plaza

**JEFF HUNTINGTON**  
206.296.9619  
[jeff.huntington@kidder.com](mailto:jeff.huntington@kidder.com)

**TODD BATTISON**  
206.296.9621  
[todd.battison@kidder.com](mailto:todd.battison@kidder.com)

**MICHELLE CRABTREE, CPM, RPA**  
206.270.6503  
[mcrabtree@steelwavellc.com](mailto:mcrabtree@steelwavellc.com)

[KIDDER.COM](http://KIDDER.COM)

This information supplied herein is from sources we deem reliable. It is provided without any representation, warranty, or guarantee, expressed or implied as to its accuracy. Prospective Buyer or Tenant should conduct an independent investigation and verification of all matters deemed to be material, including, but not limited to, statements of income and expenses. Consult your attorney, accountant, or other professional advisor.

**Kidder  
Mathews**

FOR LEASE

# Queen Anne Square

200-220 WEST MERCER STREET, SEATTLE



## AVAILABLE SPACES

### EAST BUILDING

Suite	Floorplan	SF	Available
East Suite 111	<a href="#">View Floor Plan</a>	2,658	Now
East Suite 209	<a href="#">View Floor Plan</a>	2,440	Now
East Suite 304	<a href="#">View Floor Plan</a>	2,927	Now
East Suite 401	<a href="#">View Floor Plan</a>	6,535	Now
East Suite 411	<a href="#">View Floor Plan</a>	3,216	Now
East Suite 500	<a href="#">View Floor Plan</a>	4,749	10/1/23
East Suite 504	<a href="#">View Floor Plan</a>	4,693	Now

### WEST BUILDING

Suite		SF	Available
West Suite 225	<a href="#">View Floor Plan</a>	2,466	5/1/24
West Suite 250	<a href="#">View Floor Plan</a>	5,431	Now
West Suite 300	<a href="#">View Floor Plan</a>	9,045*	Now
West Suite 400	<a href="#">View Floor Plan</a>	2,745	Now
West Suite 500	<a href="#">View Floor Plan</a>	11,221	12/1/23

\*CAN BE DEMISED TO APPROX. 4,500 SF

**FOR PRICING,** contact brokers.

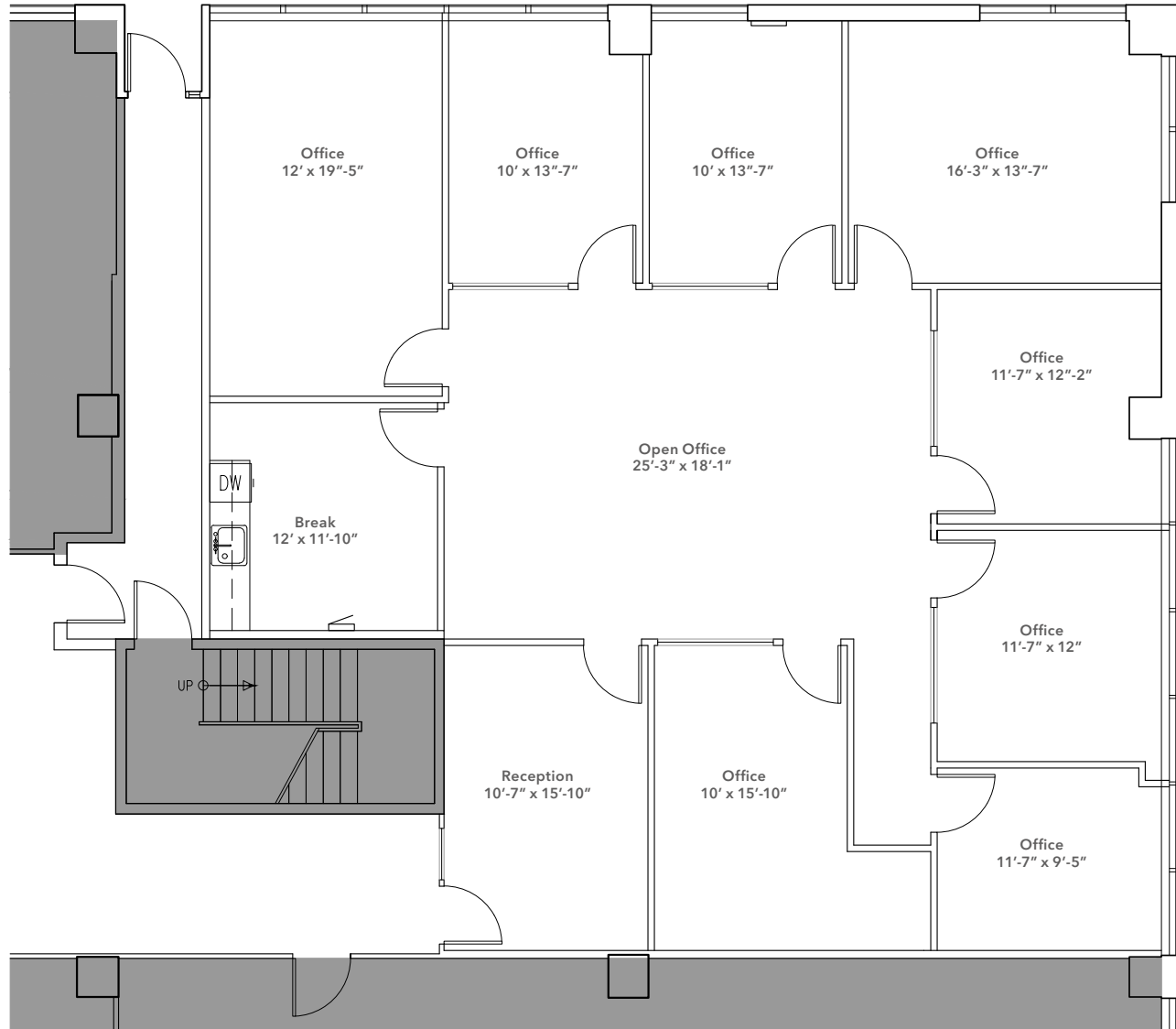
FOR LEASE

# Queen Anne Square

200-220 WEST MERCER STREET, SEATTLE

## EAST SUITE 111: 2,658 SF

[VIEW ALL AVAILABLE SPACES](#)



**JEFF HUNTINGTON**  
206.296.9619  
[jeff.huntington@kidder.com](mailto:jeff.huntington@kidder.com)

**TODD BATTISON**  
206.296.9621  
[todd.battison@kidder.com](mailto:todd.battison@kidder.com)

**MICHELLE CRABTREE, CPM, RPA**  
206.270.6503  
[mcrabtree@steelwavelc.com](mailto:mcrabtree@steelwavelc.com)

[KIDDER.COM](http://KIDDER.COM)

This information supplied herein is from sources we deem reliable. It is provided without any representation, warranty, or guarantee, expressed or implied as to its accuracy. Prospective Buyer or Tenant should conduct an independent investigation and verification of all matters deemed to be material, including, but not limited to, statements of income and expenses. Consult your attorney, accountant, or other professional advisor.



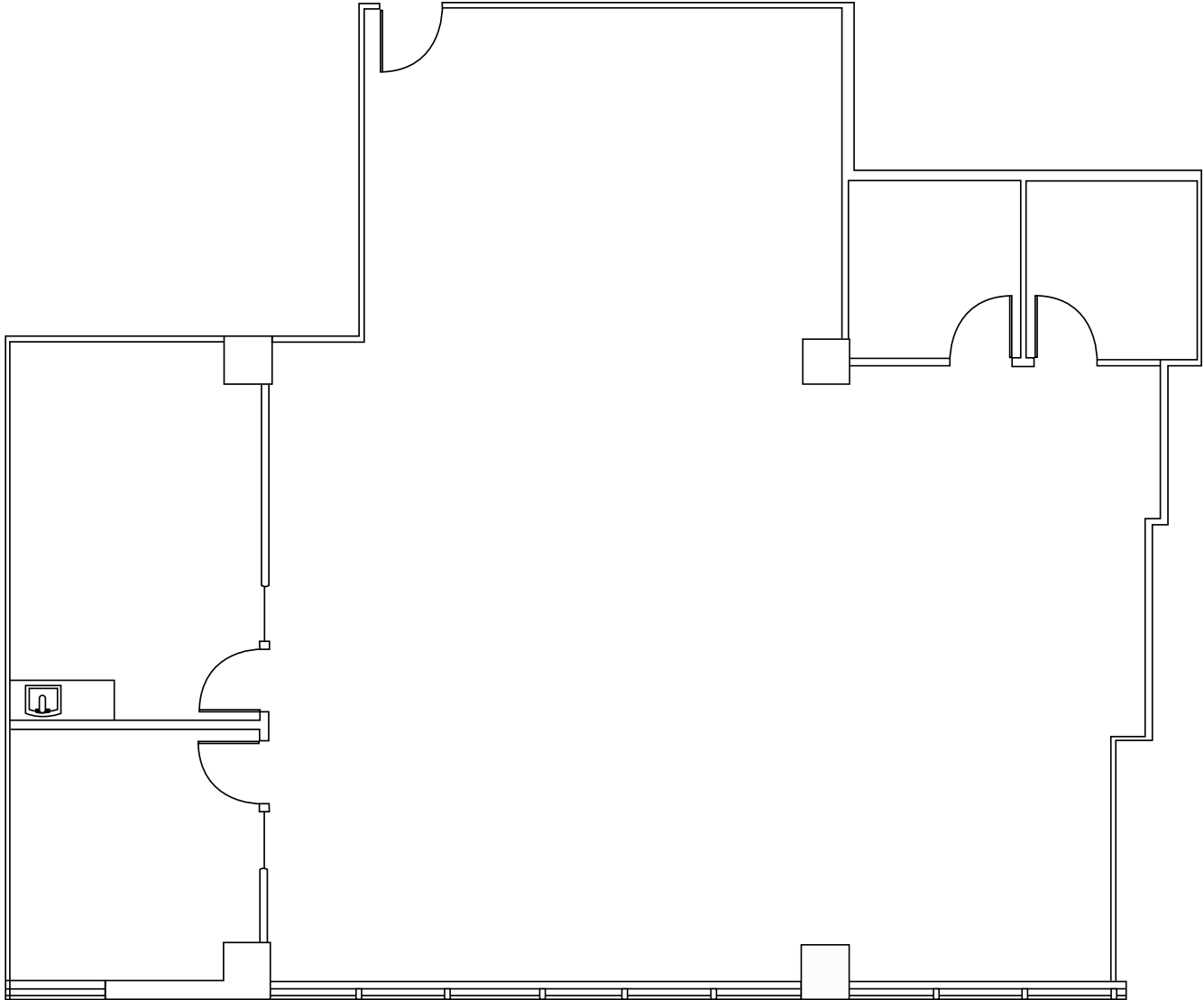
**FOR LEASE**

# Queen Anne Square

200-220 WEST MERCER STREET, SEATTLE

**EAST SUITE 209: 2,440 SF**

[VIEW ALL AVAILABLE SPACES](#)



**JEFF HUNTINGTON**  
206.296.9619  
[jeff.huntington@kidder.com](mailto:jeff.huntington@kidder.com)

**TODD BATTISON**  
206.296.9621  
[todd.battison@kidder.com](mailto:todd.battison@kidder.com)

**MICHELLE CRABTREE, CPM, RPA**  
206.270.6503  
[mcrabtree@steelwavelc.com](mailto:mcrabtree@steelwavelc.com)

**KIDDER.COM**

This information supplied herein is from sources we deem reliable. It is provided without any representation, warranty, or guarantee, expressed or implied as to its accuracy. Prospective Buyer or Tenant should conduct an independent investigation and verification of all matters deemed to be material, including, but not limited to, statements of income and expenses. Consult your attorney, accountant, or other professional advisor.



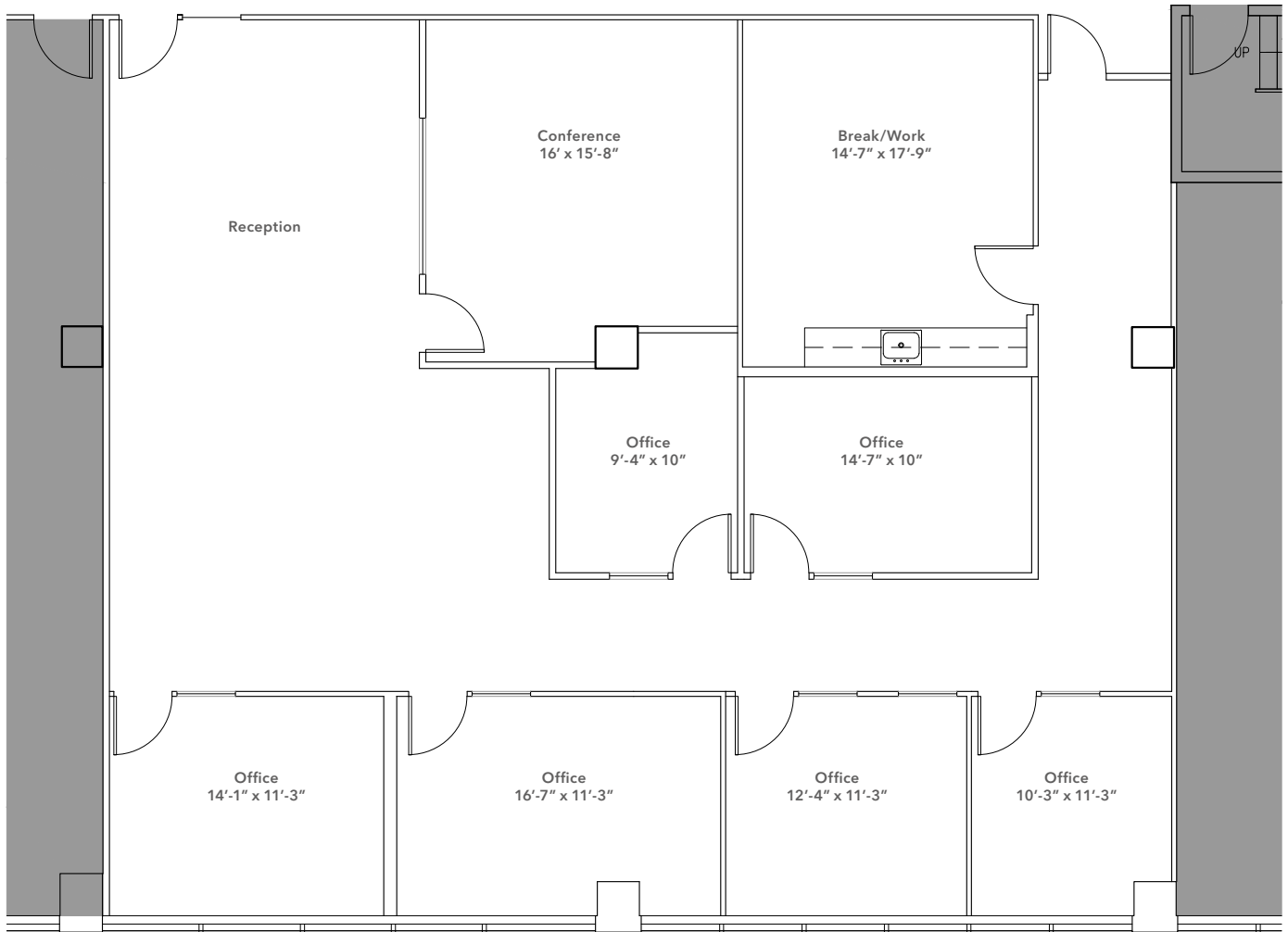
FOR LEASE

# Queen Anne Square

200-220 WEST MERCER STREET, SEATTLE

## EAST SUITE 304: 2,927 SF

[VIEW ALL AVAILABLE SPACES](#)



**JEFF HUNTINGTON**  
206.296.9619  
[jeff.huntington@kidder.com](mailto:jeff.huntington@kidder.com)

**TODD BATTISON**  
206.296.9621  
[todd.battison@kidder.com](mailto:todd.battison@kidder.com)

**MICHELLE CRABTREE, CPM, RPA**  
206.270.6503  
[mcrabtree@steelwavelc.com](mailto:mcrabtree@steelwavelc.com)

[KIDDER.COM](http://KIDDER.COM)

This information supplied herein is from sources we deem reliable. It is provided without any representation, warranty, or guarantee, expressed or implied as to its accuracy. Prospective Buyer or Tenant should conduct an independent investigation and verification of all matters deemed to be material, including, but not limited to, statements of income and expenses. Consult your attorney, accountant, or other professional advisor.



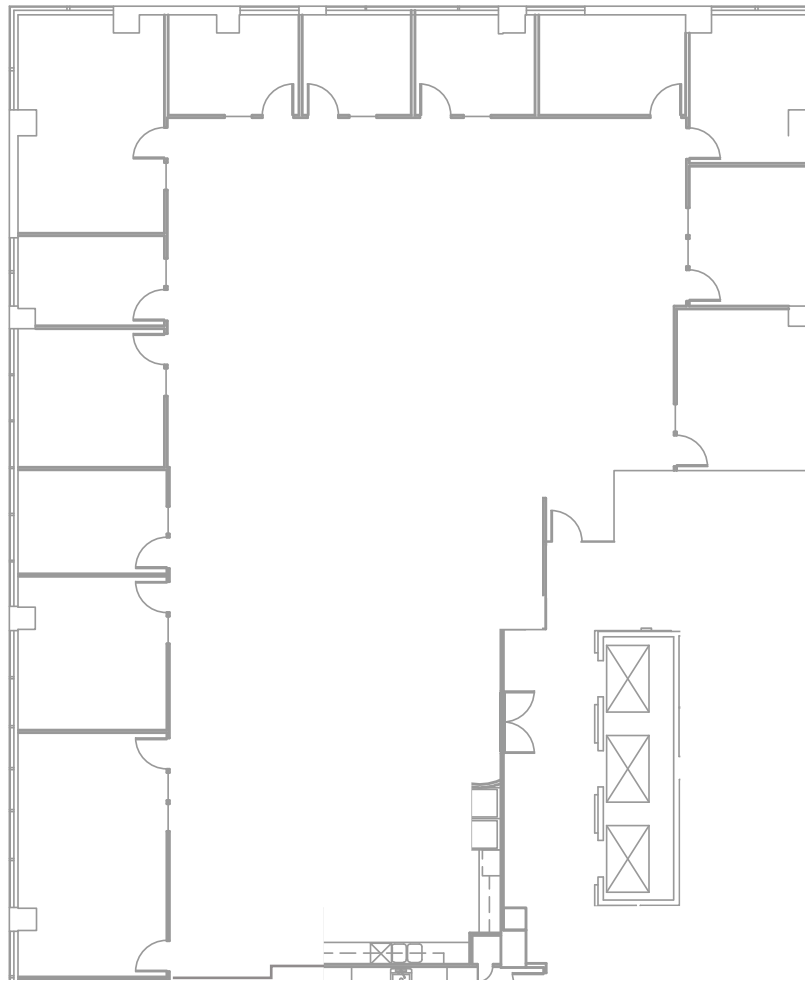
**FOR LEASE**

# Queen Anne Square

200-220 WEST MERCER STREET, SEATTLE

**EAST SUITE 401: 6,535**

[VIEW ALL AVAILABLE SPACES](#)



**JEFF HUNTINGTON**  
206.296.9619  
[jeff.huntington@kidder.com](mailto:jeff.huntington@kidder.com)

**TODD BATTISON**  
206.296.9621  
[todd.battison@kidder.com](mailto:todd.battison@kidder.com)

**MICHELLE CRABTREE, CPM, RPA**  
206.270.6503  
[mcrabtree@steelwavelc.com](mailto:mcrabtree@steelwavelc.com)

[KIDDER.COM](http://KIDDER.COM)

This information supplied herein is from sources we deem reliable. It is provided without any representation, warranty, or guarantee, expressed or implied as to its accuracy. Prospective Buyer or Tenant should conduct an independent investigation and verification of all matters deemed to be material, including, but not limited to, statements of income and expenses. Consult your attorney, accountant, or other professional advisor.



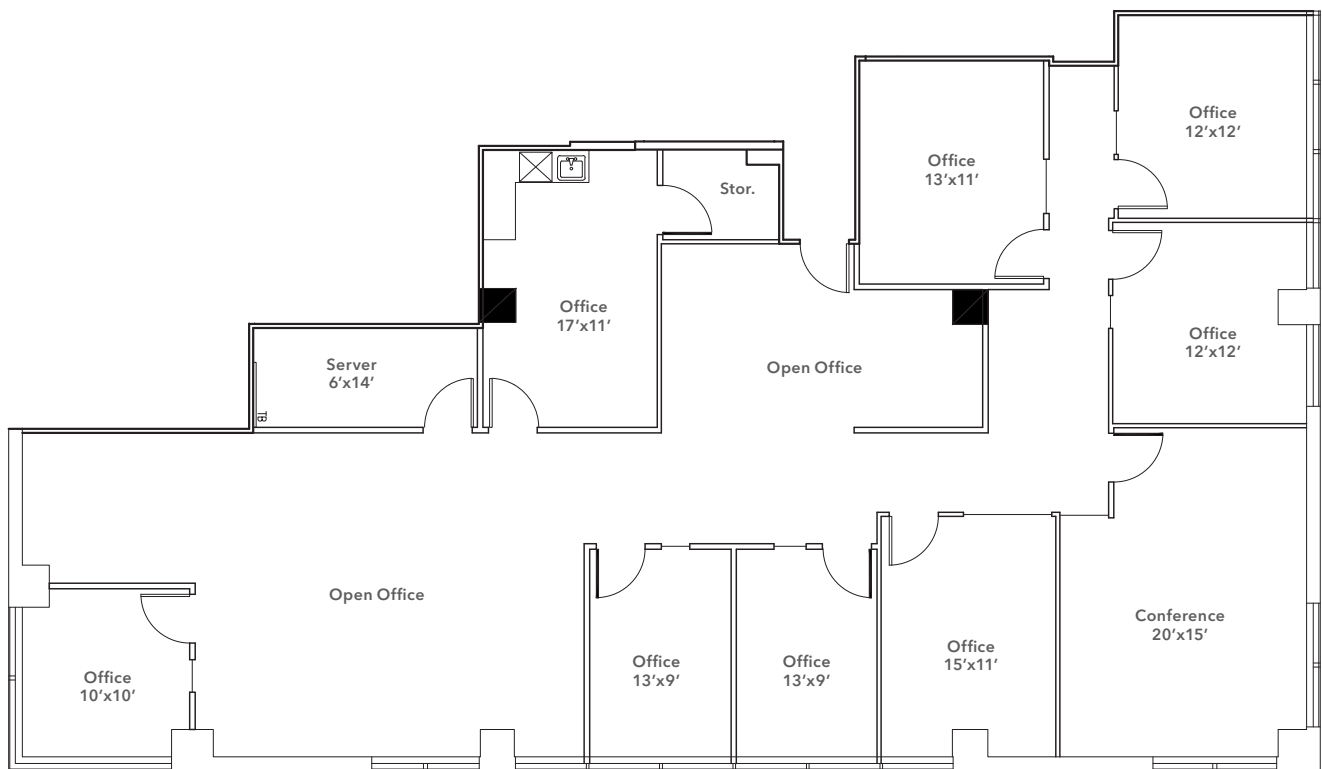
FOR LEASE

# Queen Anne Square

200-220 WEST MERCER STREET, SEATTLE

EAST SUITE 411: 3,216 SF

[VIEW ALL AVAILABLE SPACES](#)



**JEFF HUNTINGTON**  
206.296.9619  
[jeff.huntington@kiddr.com](mailto:jeff.huntington@kiddr.com)

**TODD BATTISON**  
206.296.9621  
[todd.battison@kiddr.com](mailto:todd.battison@kiddr.com)

**MICHELLE CRABTREE, CPM, RPA**  
206.270.6503  
[mcrabtree@steelwavelc.com](mailto:mcrabtree@steelwavelc.com)

[KIDDER.COM](http://KIDDER.COM)

This information supplied herein is from sources we deem reliable. It is provided without any representation, warranty, or guarantee, expressed or implied as to its accuracy. Prospective Buyer or Tenant should conduct an independent investigation and verification of all matters deemed to be material, including, but not limited to, statements of income and expenses. Consult your attorney, accountant, or other professional advisor.



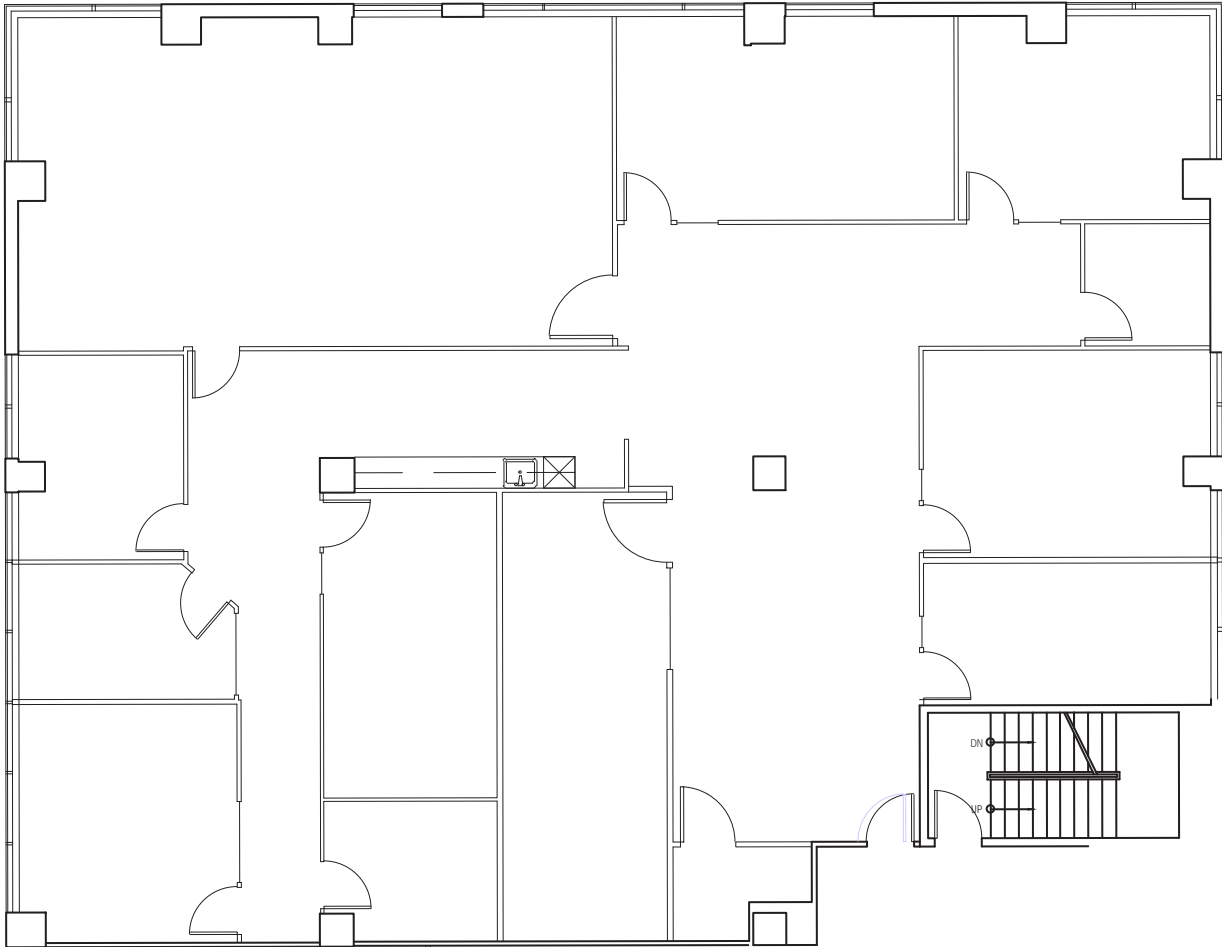
**FOR LEASE**

# Queen Anne Square

200-220 WEST MERCER STREET, SEATTLE

**EAST SUITE 500: 4,749 SF**

[VIEW ALL AVAILABLE SPACES](#)



**JEFF HUNTINGTON**  
206.296.9619  
[jeff.huntington@kidder.com](mailto:jeff.huntington@kidder.com)

**TODD BATTISON**  
206.296.9621  
[todd.battison@kidder.com](mailto:todd.battison@kidder.com)

**MICHELLE CRABTREE, CPM, RPA**  
206.270.6503  
[mcrabtree@steelwavelc.com](mailto:mcrabtree@steelwavelc.com)

**KIDDER.COM**

This information supplied herein is from sources we deem reliable. It is provided without any representation, warranty, or guarantee, expressed or implied as to its accuracy. Prospective Buyer or Tenant should conduct an independent investigation and verification of all matters deemed to be material, including, but not limited to, statements of income and expenses. Consult your attorney, accountant, or other professional advisor.





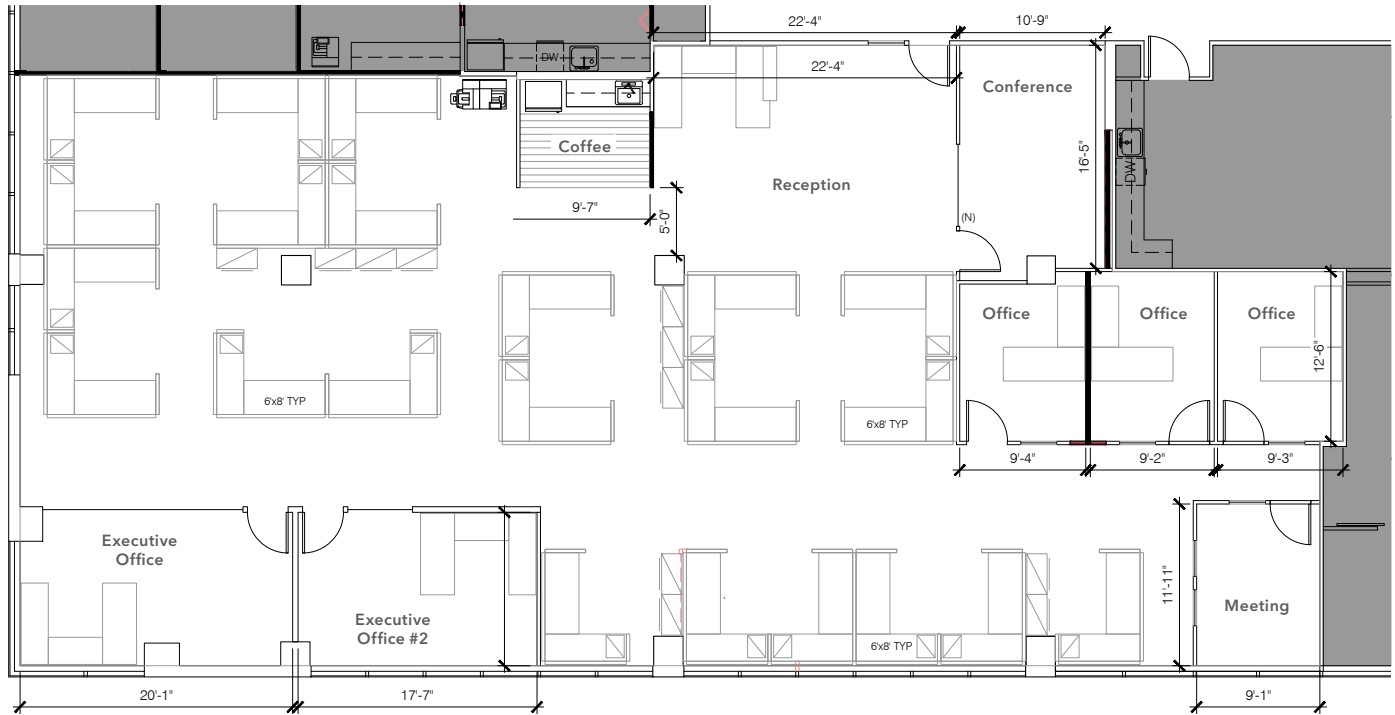
FOR LEASE

# Queen Anne Square

200-220 WEST MERCER STREET, SEATTLE

## EAST SUITE 504: 4,693 SF (Proposed layout)

[VIEW ALL AVAILABLE SPACES](#)



**JEFF HUNTINGTON**  
206.296.9619  
[jeff.huntington@kidder.com](mailto:jeff.huntington@kidder.com)

**TODD BATTISON**  
206.296.9621  
[todd.battison@kidder.com](mailto:todd.battison@kidder.com)

**MICHELLE CRABTREE, CPM, RPA**  
206.270.6503  
[mcrabtree@steelwavelc.com](mailto:mcrabtree@steelwavelc.com)

[KIDDER.COM](http://KIDDER.COM)

This information supplied herein is from sources we deem reliable. It is provided without any representation, warranty, or guarantee, expressed or implied as to its accuracy. Prospective Buyer or Tenant should conduct an independent investigation and verification of all matters deemed to be material, including, but not limited to, statements of income and expenses. Consult your attorney, accountant, or other professional advisor.



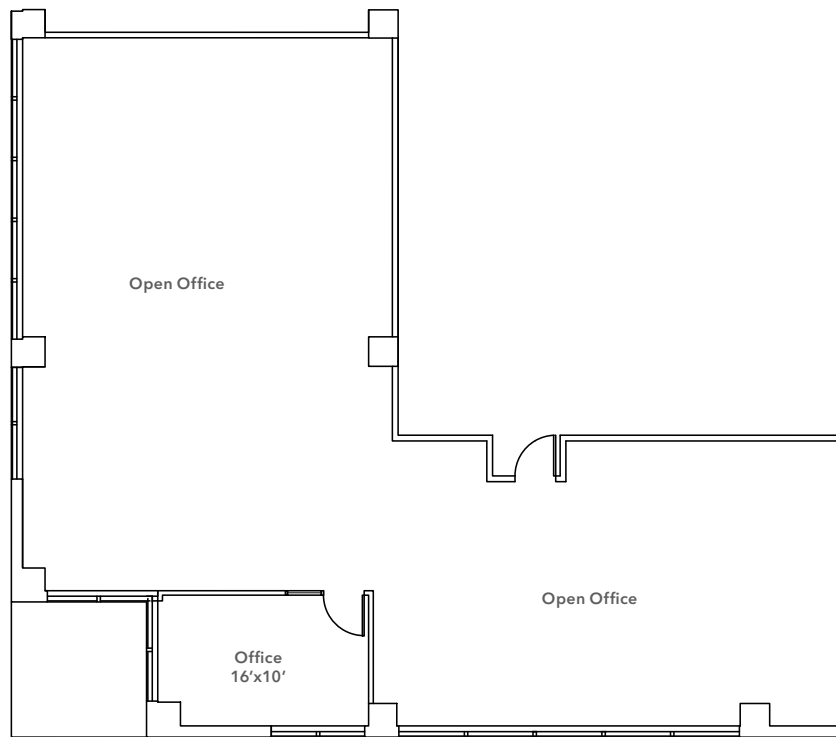
**FOR LEASE**

# Queen Anne Square

200-220 WEST MERCER STREET, SEATTLE

**WEST SUITE 225: 2,466 SF**

[VIEW ALL AVAILABLE SPACES](#)



**JEFF HUNTINGTON**  
206.296.9619  
[jeff.huntington@kidder.com](mailto:jeff.huntington@kidder.com)

**TODD BATTISON**  
206.296.9621  
[todd.battison@kidder.com](mailto:todd.battison@kidder.com)

**MICHELLE CRABTREE, CPM, RPA**  
206.270.6503  
[mcrabtree@steelwavelc.com](mailto:mcrabtree@steelwavelc.com)

**KIDDER.COM**

This information supplied herein is from sources we deem reliable. It is provided without any representation, warranty, or guarantee, expressed or implied as to its accuracy. Prospective Buyer or Tenant should conduct an independent investigation and verification of all matters deemed to be material, including, but not limited to, statements of income and expenses. Consult your attorney, accountant, or other professional advisor.



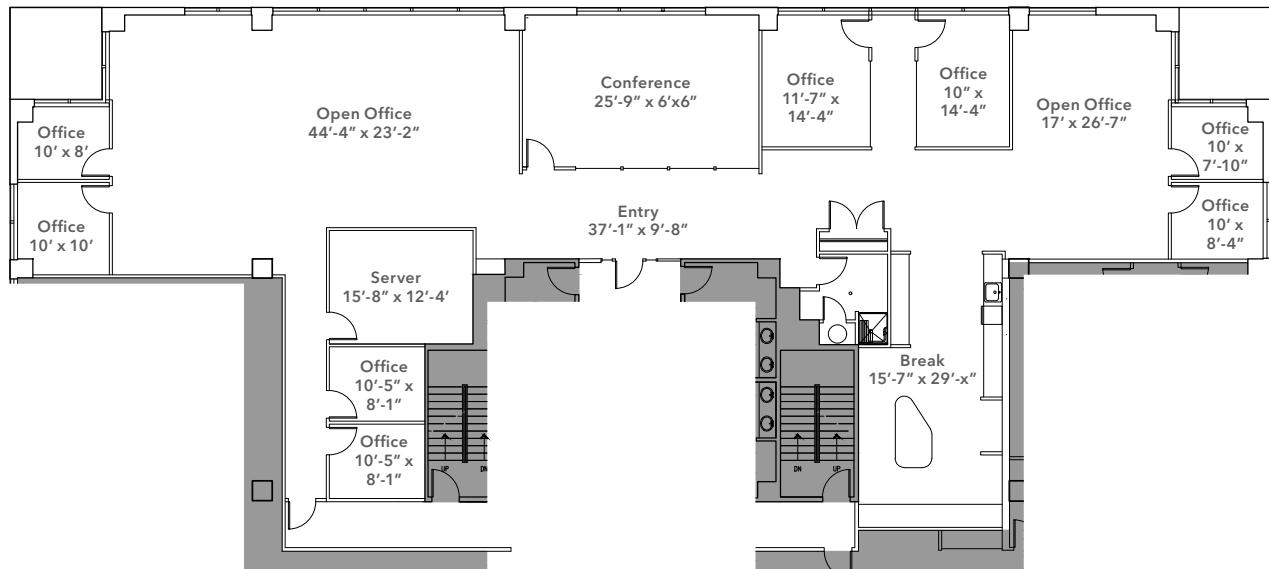
FOR LEASE

# Queen Anne Square

200-220 WEST MERCER STREET, SEATTLE

## WEST SUITE 250: 5,431 SF

[VIEW ALL AVAILABLE SPACES](#)



**JEFF HUNTINGTON**  
206.296.9619  
[jeff.huntington@kidder.com](mailto:jeff.huntington@kidder.com)

**TODD BATTISON**  
206.296.9621  
[todd.battison@kidder.com](mailto:todd.battison@kidder.com)

**MICHELLE CRABTREE, CPM, RPA**  
206.270.6503  
[mcrabtree@steelwavelc.com](mailto:mcrabtree@steelwavelc.com)

[KIDDER.COM](http://KIDDER.COM)

This information supplied herein is from sources we deem reliable. It is provided without any representation, warranty, or guarantee, expressed or implied as to its accuracy. Prospective Buyer or Tenant should conduct an independent investigation and verification of all matters deemed to be material, including, but not limited to, statements of income and expenses. Consult your attorney, accountant, or other professional advisor.



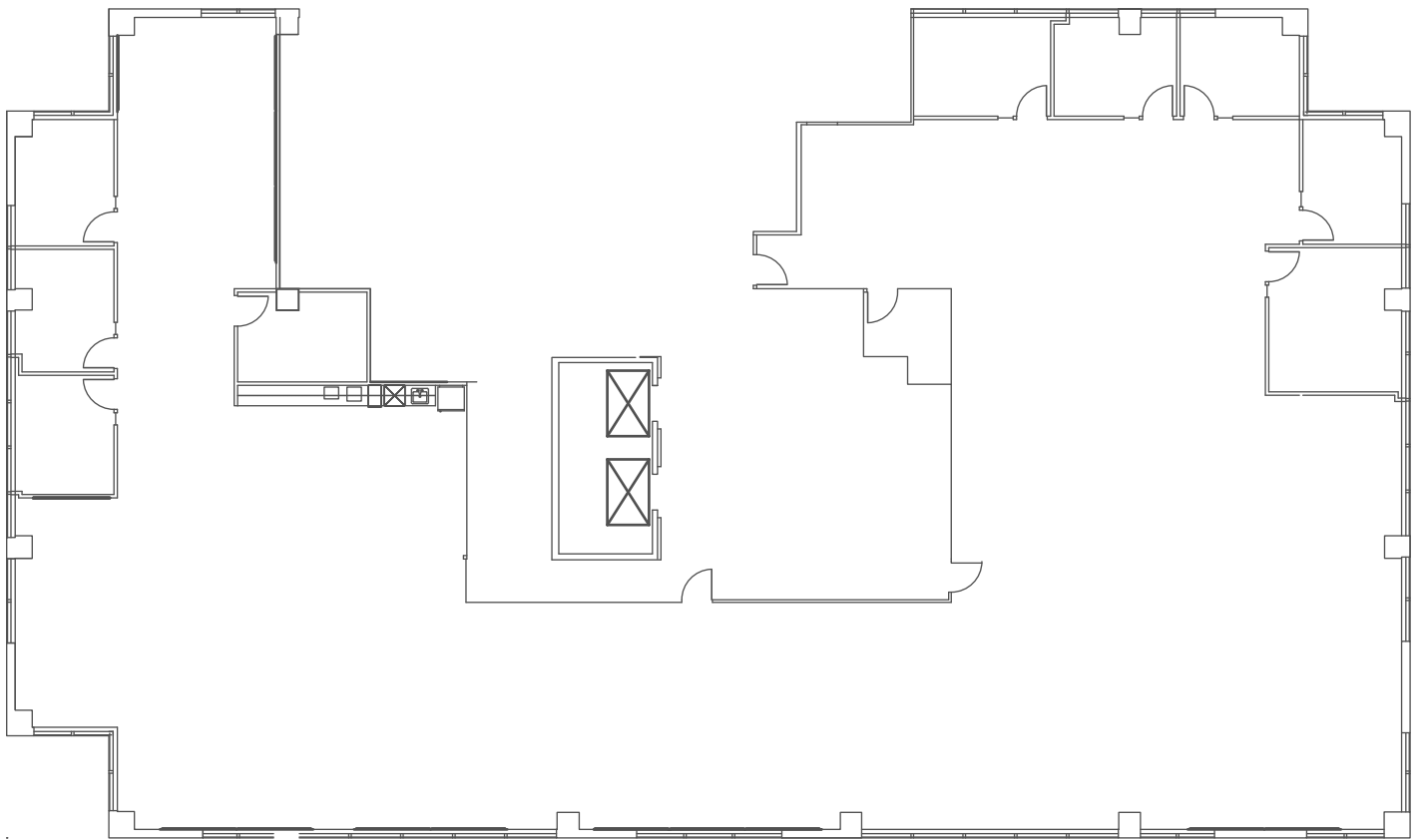
FOR LEASE

# Queen Anne Square

200-220 WEST MERCER STREET, SEATTLE

WEST SUITE 300: 9,045 SF

[VIEW ALL AVAILABLE SPACES](#)



**JEFF HUNTINGTON**  
206.296.9619  
[jeff.huntington@kidder.com](mailto:jeff.huntington@kidder.com)

**TODD BATTISON**  
206.296.9621  
[todd.battison@kidder.com](mailto:todd.battison@kidder.com)

**MICHELLE CRABTREE, CPM, RPA**  
206.270.6503  
[mcrabtree@steelwavelc.com](mailto:mcrabtree@steelwavelc.com)

[KIDDER.COM](http://KIDDER.COM)

This information supplied herein is from sources we deem reliable. It is provided without any representation, warranty, or guarantee, expressed or implied as to its accuracy. Prospective Buyer or Tenant should conduct an independent investigation and verification of all matters deemed to be material, including, but not limited to, statements of income and expenses. Consult your attorney, accountant, or other professional advisor.



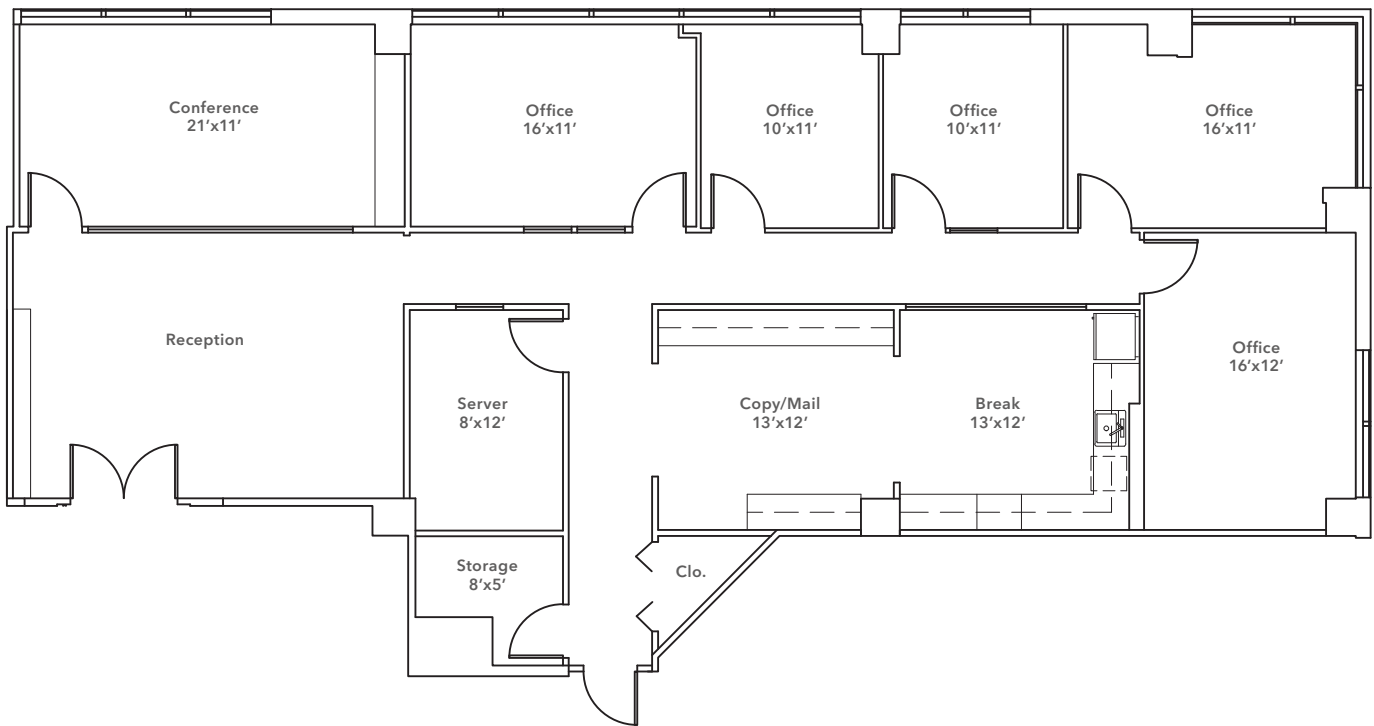
**FOR LEASE**

# Queen Anne Square

200-220 WEST MERCER STREET, SEATTLE

## WEST SUITE 400: 2,745 SF

[VIEW ALL AVAILABLE SPACES](#)



**JEFF HUNTINGTON**  
206.296.9619  
[jeff.huntington@kidder.com](mailto:jeff.huntington@kidder.com)

**TODD BATTISON**  
206.296.9621  
[todd.battison@kidder.com](mailto:todd.battison@kidder.com)

**MICHELLE CRABTREE, CPM, RPA**  
206.270.6503  
[mcrabtree@steelwavelc.com](mailto:mcrabtree@steelwavelc.com)

[KIDDER.COM](http://KIDDER.COM)

This information supplied herein is from sources we deem reliable. It is provided without any representation, warranty, or guarantee, expressed or implied as to its accuracy. Prospective Buyer or Tenant should conduct an independent investigation and verification of all matters deemed to be material, including, but not limited to, statements of income and expenses. Consult your attorney, accountant, or other professional advisor.



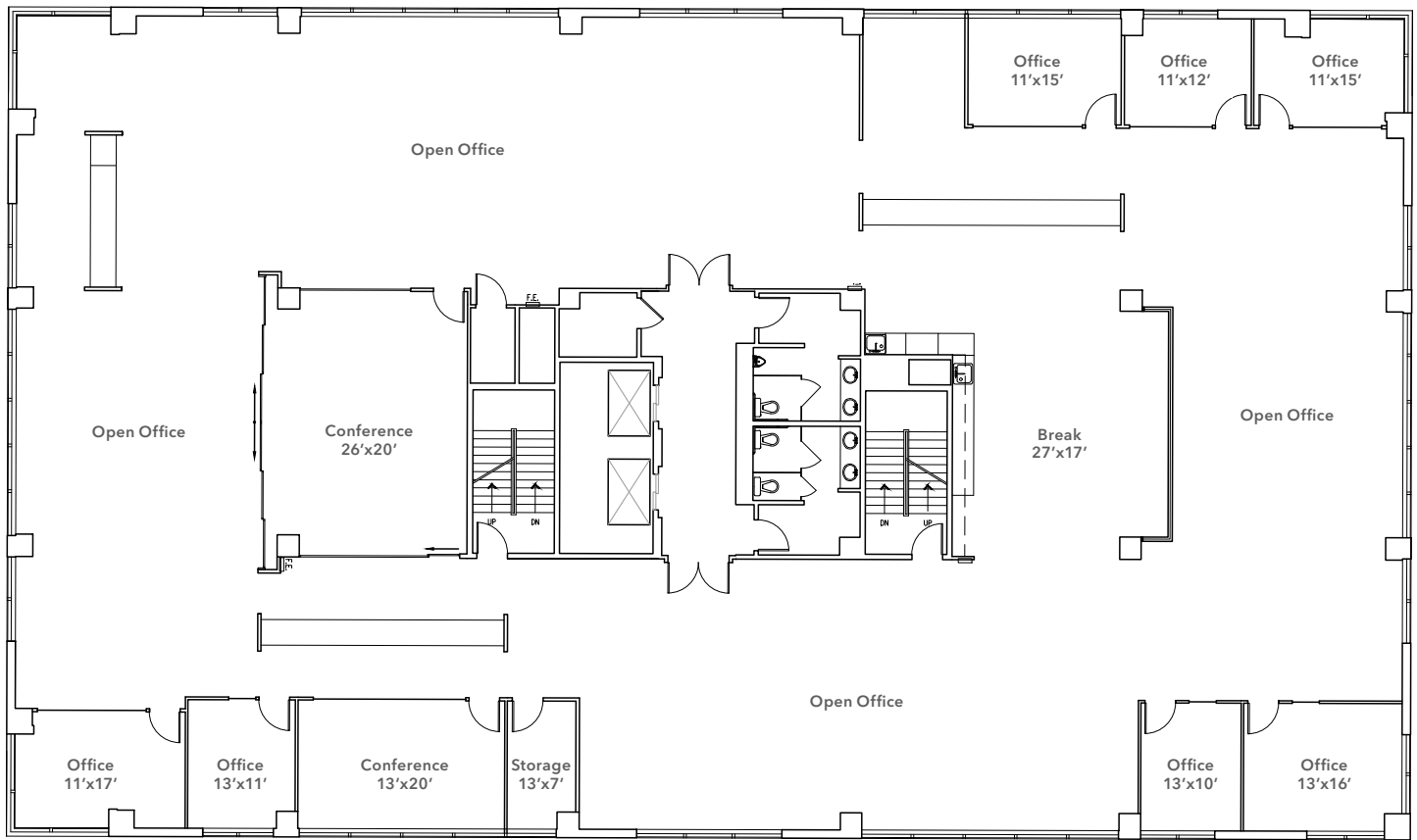
FOR LEASE

# Queen Anne Square

200-220 WEST MERCER STREET, SEATTLE

## WEST SUITE 500: 11,221 SF

[VIEW ALL AVAILABLE SPACES](#)



**JEFF HUNTINGTON**  
206.296.9619  
[jeff.huntington@kidder.com](mailto:jeff.huntington@kidder.com)

**TODD BATTISON**  
206.296.9621  
[todd.battison@kidder.com](mailto:todd.battison@kidder.com)

**MICHELLE CRABTREE, CPM, RPA**  
206.270.6503  
[mcrabtree@steelwavelc.com](mailto:mcrabtree@steelwavelc.com)

**KIDDER.COM**

This information supplied herein is from sources we deem reliable. It is provided without any representation, warranty, or guarantee, expressed or implied as to its accuracy. Prospective Buyer or Tenant should conduct an independent investigation and verification of all matters deemed to be material, including, but not limited to, statements of income and expenses. Consult your attorney, accountant, or other professional advisor.



**FOR LEASE**

# Queen Anne Square

200-220 WEST MERCER STREET, SEATTLE

**3 MIN**

TO SEATTLE CENTER

**6 MIN**

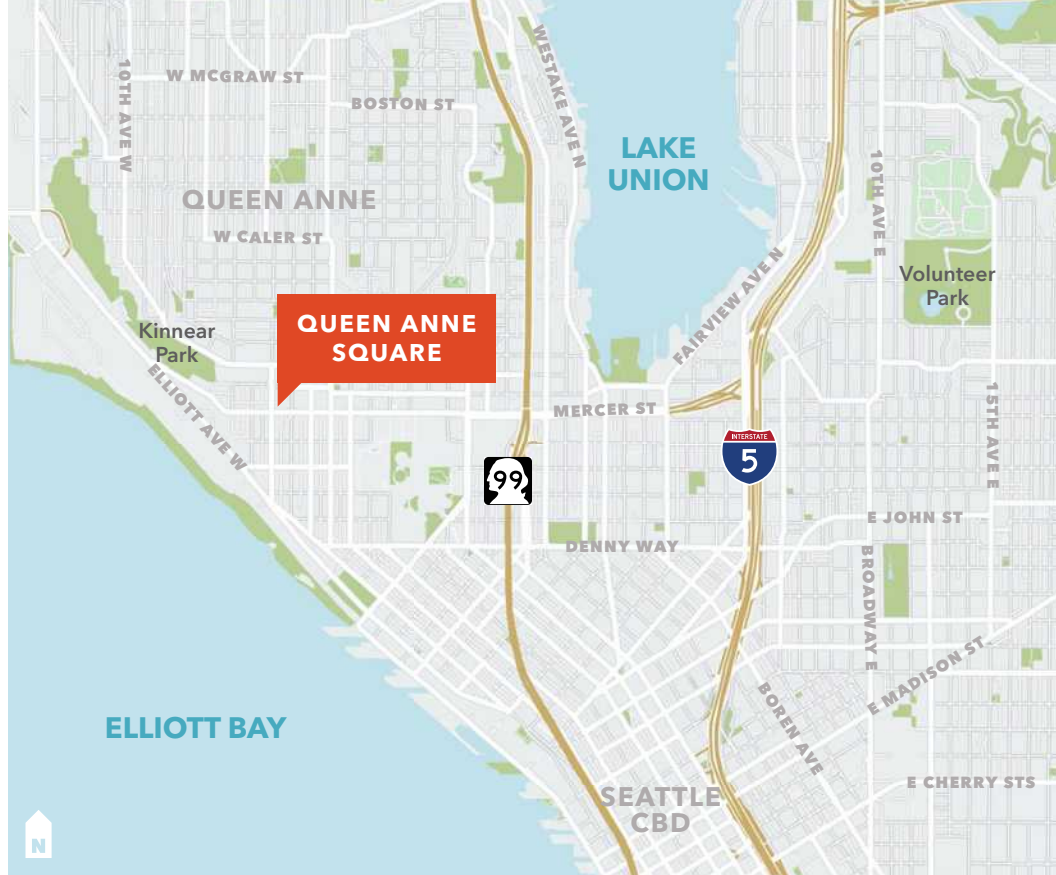
TO HIGHWAY 99

**9 MIN**

TO INTERSTATE 5

**10 MIN**

TO SEATTLE CBD



**JEFF HUNTINGTON**  
206.296.9619  
[jeff.huntington@kidder.com](mailto:jeff.huntington@kidder.com)

**TODD BATTISON**  
206.296.9621  
[todd.battison@kidder.com](mailto:todd.battison@kidder.com)

**MICHELLE CRABTREE, CPM, RPA**  
206.270.6503  
[mcrabtree@steelwavellc.com](mailto:mcrabtree@steelwavellc.com)

[KIDDER.COM](http://KIDDER.COM)

This information supplied herein is from sources we deem reliable. It is provided without any representation, warranty, or guarantee, expressed or implied as to its accuracy. Prospective Buyer or Tenant should conduct an independent investigation and verification of all matters deemed to be material, including, but not limited to, statements of income and expenses. Consult your attorney, accountant, or other professional advisor.

**km** Kidder Mathews