



Norfolk Building

3701 SOUTH NORFOLK STREET | SEATTLE, WA

FOR LEASE



2 Office 2 Warehouse Options Available

OFFICE SPACE

SUITE 300 5,192 SF available now

SUITE 301 8,733 SF available
3/1/2024 or earlier

WAREHOUSE SPACE

SUITE 101 20,187 SF, warehouse,
including 2,359 SF office, available
3/1/2024 or earlier

SUITE 103 7,922 SF warehouse, plus
fenced yard available now

SUITE 101&103 28,739 SF combined

BUILDING AMENITIES

GREAT freeway access to I-5 North/
South and Sea-Tac Airport

AMPLE free parking

LARGE shared rooftop deck (office)

STORAGE available 1,649 SF (office)

CONTACT agents for price

JIM KIDDER
206.248.7328
jim.kidder@kidder.com

TODD BATTISON
206.296.9621
todd.battison@kidder.com

JEFF HUNTINGTON
206.296.9619
jeff.huntington@kidder.com

KIDDER.COM

Kidder Mathews

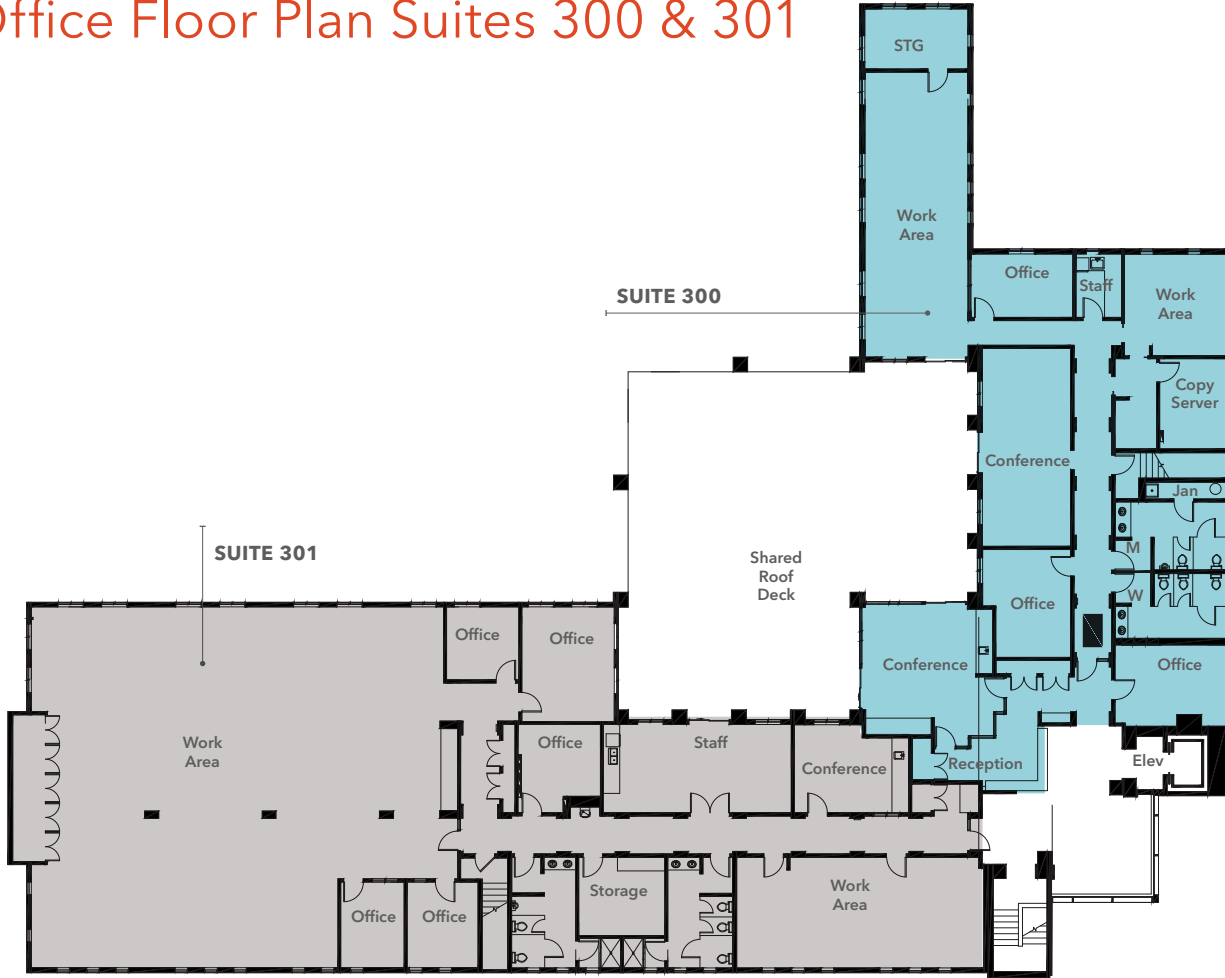
This information supplied herein is from sources we deem reliable. It is provided without any representation, warranty, or guarantee, expressed or implied as to its accuracy. Prospective Buyer or Tenant should conduct an independent investigation and verification of all matters deemed to be material, including, but not limited to, statements of income and expenses. Consult your attorney, accountant, or other professional advisor.

FOR LEASE

Norfolk Building

3701 SOUTH NORFOLK STREET | SEATTLE, WA

Office Floor Plan Suites 300 & 301



OFFICE AVAILABLE SPACE

Suite	SF	Features	Available
300	5,192	Mix of private offices, conference rooms, open team rooms, kitchen, and private bathrooms, direct access to shared deck	Now
301	8,733	Large open workspace, team room, 5 private offices, conference, kitchen, and private bathrooms, direct access to shared deck	3/1/2024 or earlier

JIM KIDDER
206.248.7328
jim.kidder@kidder.com

TODD BATTISON
206.296.9621
todd.battison@kidder.com

JEFF HUNTINGTON
206.296.9619
jeff.huntington@kidder.com

KIDDER.COM

This information supplied herein is from sources we deem reliable. It is provided without any representation, warranty, or guarantee, expressed or implied as to its accuracy. Prospective Buyer or Tenant should conduct an independent investigation and verification of all matters deemed to be material, including, but not limited to, statements of income and expenses. Consult your attorney, accountant, or other professional advisor.

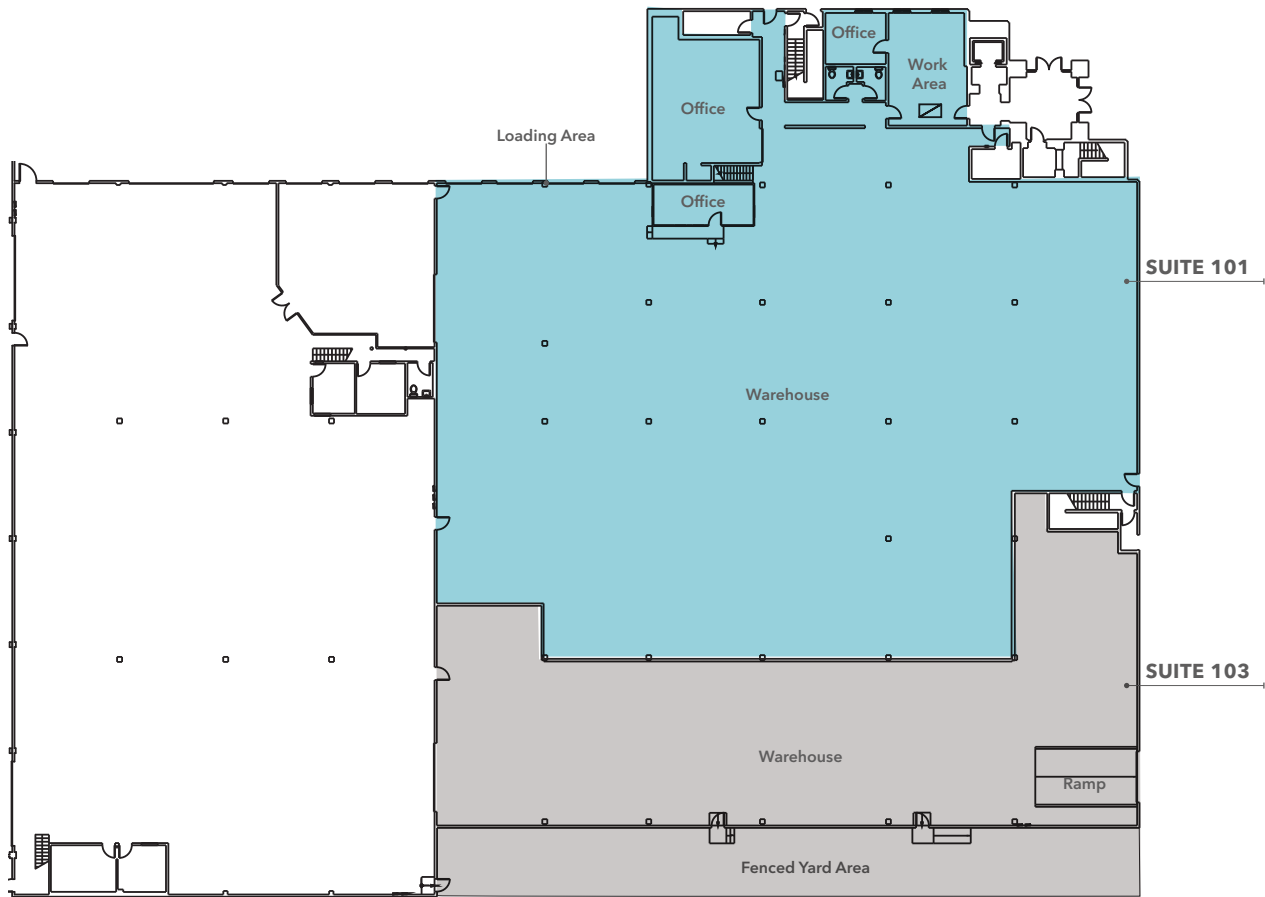


FOR LEASE

Norfolk Building

3701 SOUTH NORFOLK STREET | SEATTLE, WA

Warehouse Floor Plan Suites 101 & 103



WAREHOUSE AVAILABLE SPACE

Suite	SF	Features	Available
101	20,187 w/ 2,359 Office	24' ceilings, 3 dock high doors, 1 ramped door, private bathrooms	3/1/2024 or earlier
103	7,922	Open 24' ceiling warehouse with a single ramped door. Plus fenced in yard. Sub-lease or direct	Q3 2023
101 & 103	28,739	24' ceilings, 3 dock doors, 2 ramps, fenced yard area	Q3 2023

JIM KIDDER
206.248.7328
jim.kidder@kidder.com

TODD BATTISON
206.296.9621
todd.battison@kidder.com

JEFF HUNTINGTON
206.296.9619
jeff.huntington@kidder.com

KIDDER.COM

This information supplied herein is from sources we deem reliable. It is provided without any representation, warranty, or guarantee, expressed or implied as to its accuracy. Prospective Buyer or Tenant should conduct an independent investigation and verification of all matters deemed to be material, including, but not limited to, statements of income and expenses. Consult your attorney, accountant, or other professional advisor.

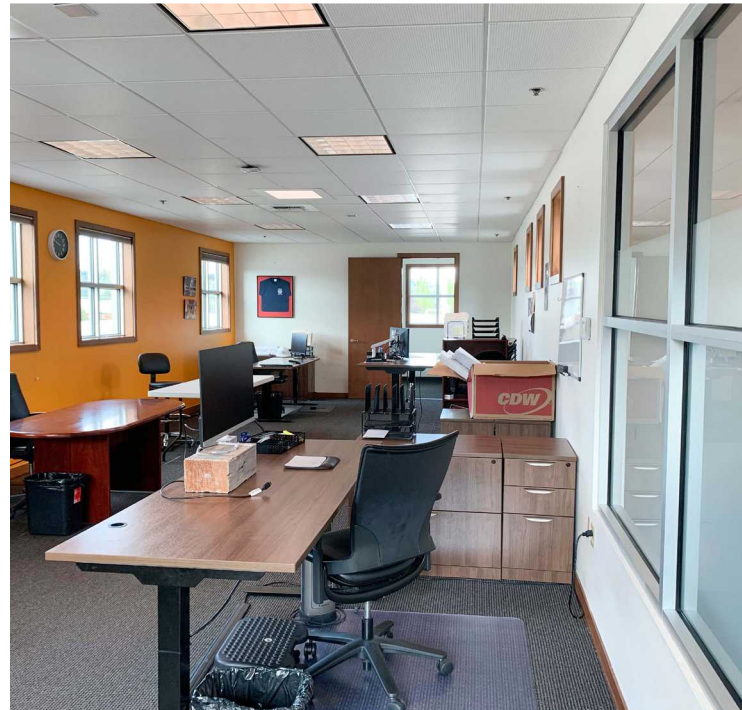


FOR LEASE

Norfolk Building

3701 SOUTH NORFOLK STREET | SEATTLE, WA

Office Photos



JIM KIDDER
206.248.7328
jim.kidder@kidder.com

TODD BATTISON
206.296.9621
todd.battison@kidder.com

JEFF HUNTINGTON
206.296.9619
jeff.huntington@kidder.com

KIDDER.COM

This information supplied herein is from sources we deem reliable. It is provided without any representation, warranty, or guarantee, expressed or implied as to its accuracy. Prospective Buyer or Tenant should conduct an independent investigation and verification of all matters deemed to be material, including, but not limited to, statements of income and expenses. Consult your attorney, accountant, or other professional advisor.

