

# LEASE

## 1110 GOLF CLUB RD SE

1110 Golf Club Rd SE Lacey, WA 98503

LEASE RATE \$1,350 PER MONTH



**COLDWELL BANKER  
COMMERCIAL**  
EVERGREEN OLYMPIC  
REALTY, INC.

---

**Spencer Ingrim**

360 701 6439

[spencer.ingrim@cbolympia.com](mailto:spencer.ingrim@cbolympia.com)

©2023 Coldwell Banker. All Rights Reserved. Coldwell Banker Commercial® and the Coldwell Banker Commercial logos are trademarks of Coldwell Banker Real Estate LLC. The Coldwell Banker® System is comprised of company owned offices which are owned by a subsidiary of Anywhere Advisors LLC and franchised offices which are independently owned and operated. The Coldwell Banker System fully supports the principles of the Equal Opportunity Act.

# LEASE

**1110 GOLF CLUB RD SE**  
1110 Golf Club Rd SE Lacey, WA 98503



## PROPERTY DESCRIPTION

800 SF open floor plan office suite in well maintained building.

## PROPERTY HIGHLIGHTS

- Full-service lease agreement
- Restrooms on Every Floor
- 1 Private Office
- 1 Reserved Parking Spot

## OFFERING SUMMARY

Lease Rate:	\$1,350.00 per month (Full Service)
Number of Units:	2
Available SF:	800 SF
Lot Size:	273,339,000 SF
Building Size:	3,477 SF
Zoning:	CBD 4
APN:	11820111600

DEMOGRAPHICS	1 MILE	5 MILES	10 MILES
Total Households	4,849	65,098	97,054
Total Population	9,858	154,478	230,789
Average HH Income	\$55,737	\$82,072	\$88,431

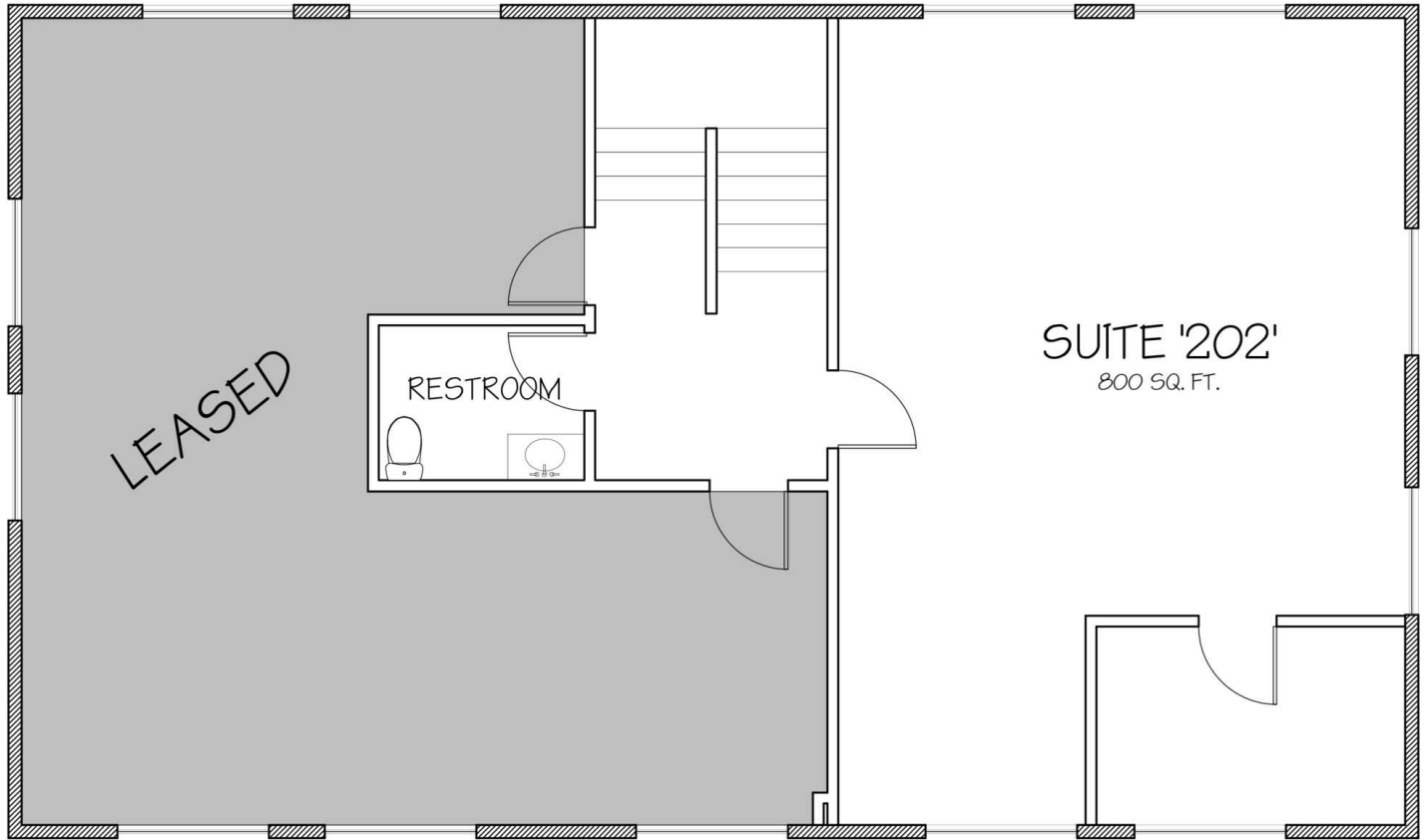
**Spencer Ingrim**  
360 701 6439  
spencer.ingrim@cbolympia.com



**COLDWELL BANKER  
COMMERCIAL**  
EVERGREEN OLYMPIC  
REALTY, INC.

# LEASE

**1110 GOLF CLUB RD SE**  
1110 Golf Club Rd SE Lacey, WA 98503



 2ND FLOOR

**Spencer Ingrim**  
360 701 6439  
spencer.ingrim@cbolympia.com

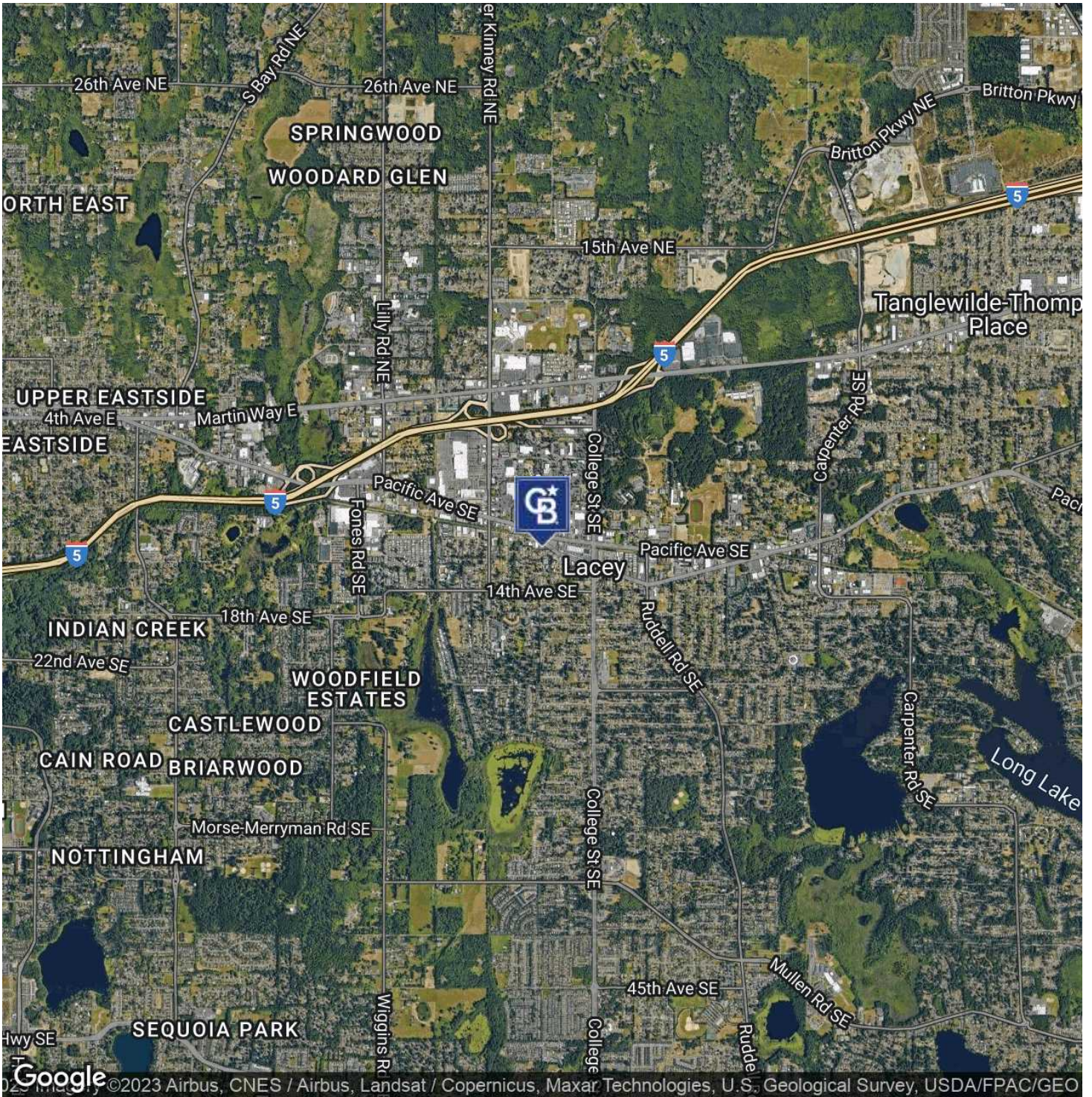


**COLDWELL BANKER  
COMMERCIAL**  
EVERGREEN OLYMPIC  
REALTY, INC.



# LEASE

**1110 GOLF CLUB RD SE**  
1110 Golf Club Rd SE Lacey, WA 98503



**Spencer Ingrim**  
360 701 6439  
spencer.ingrim@cbolympia.com



**COLDWELL BANKER  
COMMERCIAL**  
EVERGREEN OLYMPIC  
REALTY, INC.



# LEASE

**1110 GOLF CLUB RD SE**

1110 Golf Club Rd SE Lacey, WA 98503



**Spencer Ingrim**

360 701 6439

spencer.ingrim@cbolympia.com



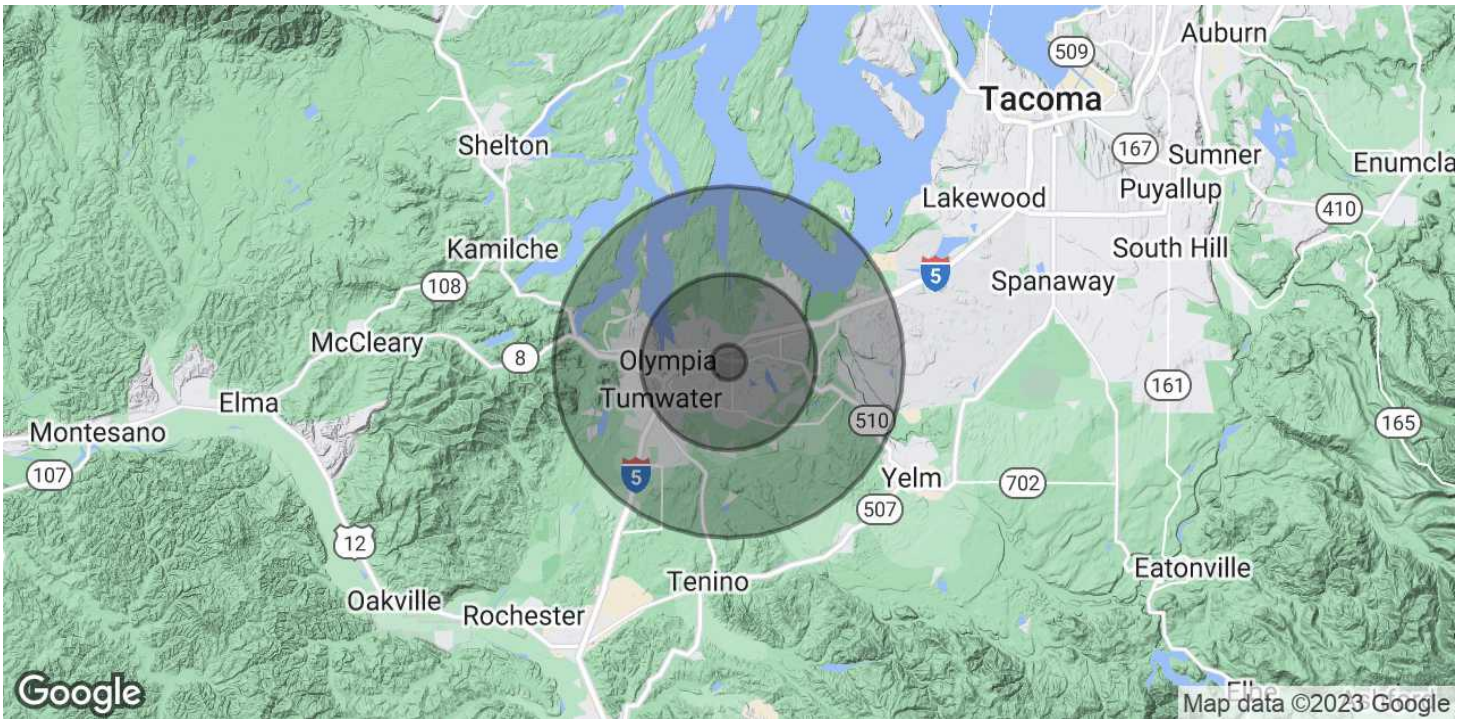
**COLDWELL BANKER  
COMMERCIAL**  
EVERGREEN OLYMPIC  
REALTY, INC.



# LEASE

## 1110 GOLF CLUB RD SE

1110 Golf Club Rd SE Lacey, WA 98503



<b>POPULATION</b>	<b>1 MILE</b>	<b>5 MILES</b>	<b>10 MILES</b>
Total Population	9,858	154,478	230,789
Average Age	40.9	39.1	40.3
Average Age (Male)	37.5	36.9	38.3
Average Age (Female)	41.6	40.5	41.8

<b>HOUSEHOLDS &amp; INCOME</b>	<b>1 MILE</b>	<b>5 MILES</b>	<b>10 MILES</b>
Total Households	4,849	65,098	97,054
# of Persons per HH	2	2.4	2.4
Average HH Income	\$55,737	\$82,072	\$88,431
Average House Value	\$210,330	\$291,308	\$316,009

\* Demographic data derived from 2020 ACS - US Census

**Spencer Ingrim**  
360 701 6439  
spencer.ingrim@cbolympia.com



**COLDWELL BANKER  
COMMERCIAL**  
EVERGREEN OLYMPIC  
REALTY, INC.