

Northern Passage

Office Space For Lease

3302 Fuhrman Ave E, Seattle WA 98102



KAMALOR
COMMERCIAL REAL ESTATE
206.656.7700

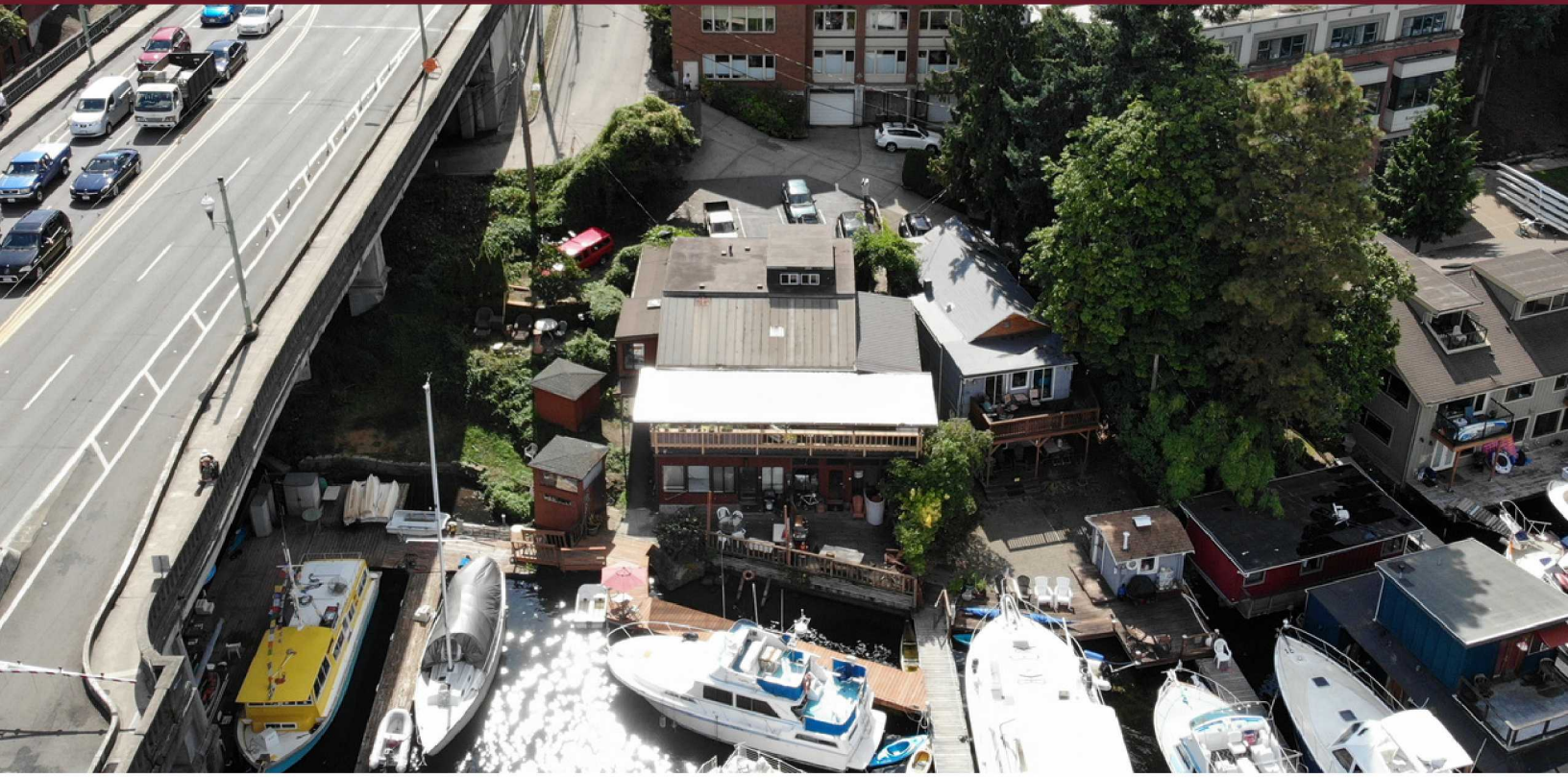
Brad Decker
206.656.7200
Brad@Kamalor.com

Christian Decker, CCIM
206.656.7300
Brad@Kamalor.com

Northern Passage

Office Space For Lease

3302 Fuhrman Ave E, Seattle WA 98102



KAMALOR
COMMERCIAL REAL ESTATE
206.656.7700

Brad Decker
206.656.7200
Brad@Kamalor.com

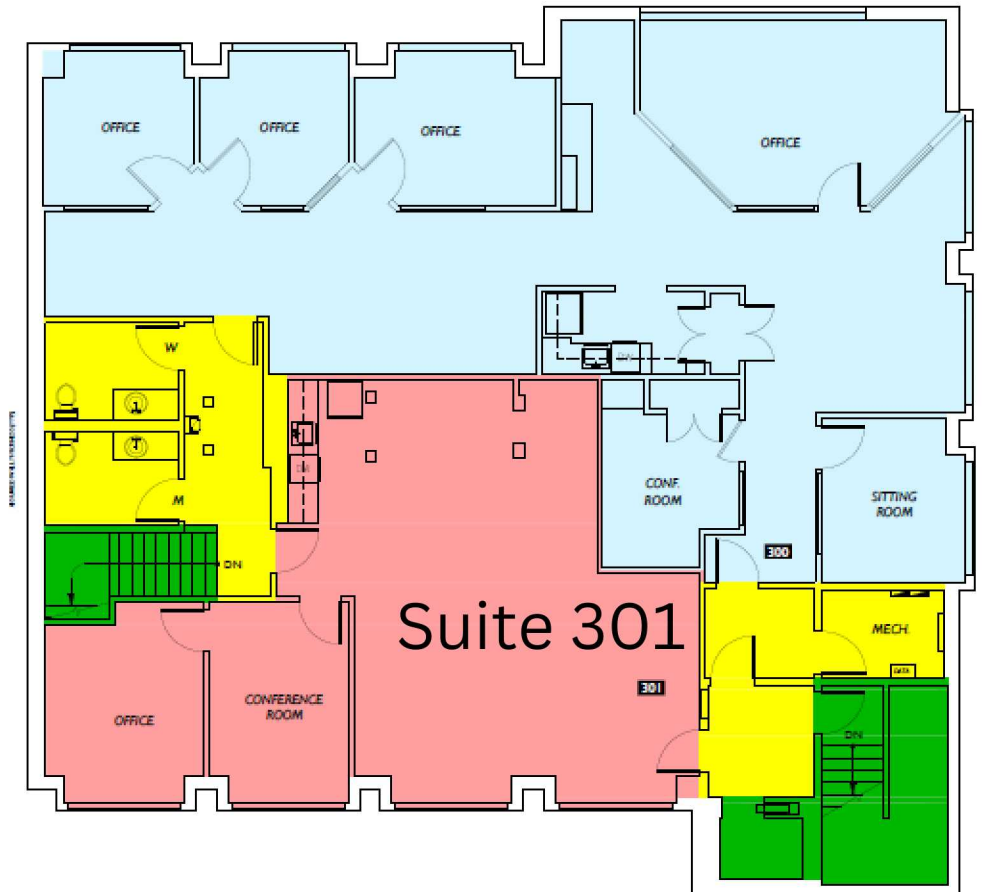
Christian Decker, CCIM
206.656.7300
Brad@Kamalor.com

Northern Passage

Office Space For Lease

3302 Fuhrman Ave E, Seattle WA 98102

Suite 301
1,338 RSF



KAMALOR
COMMERCIAL REAL ESTATE
206.656.7700

Brad Decker
206.656.7200
Brad@Kamalor.com

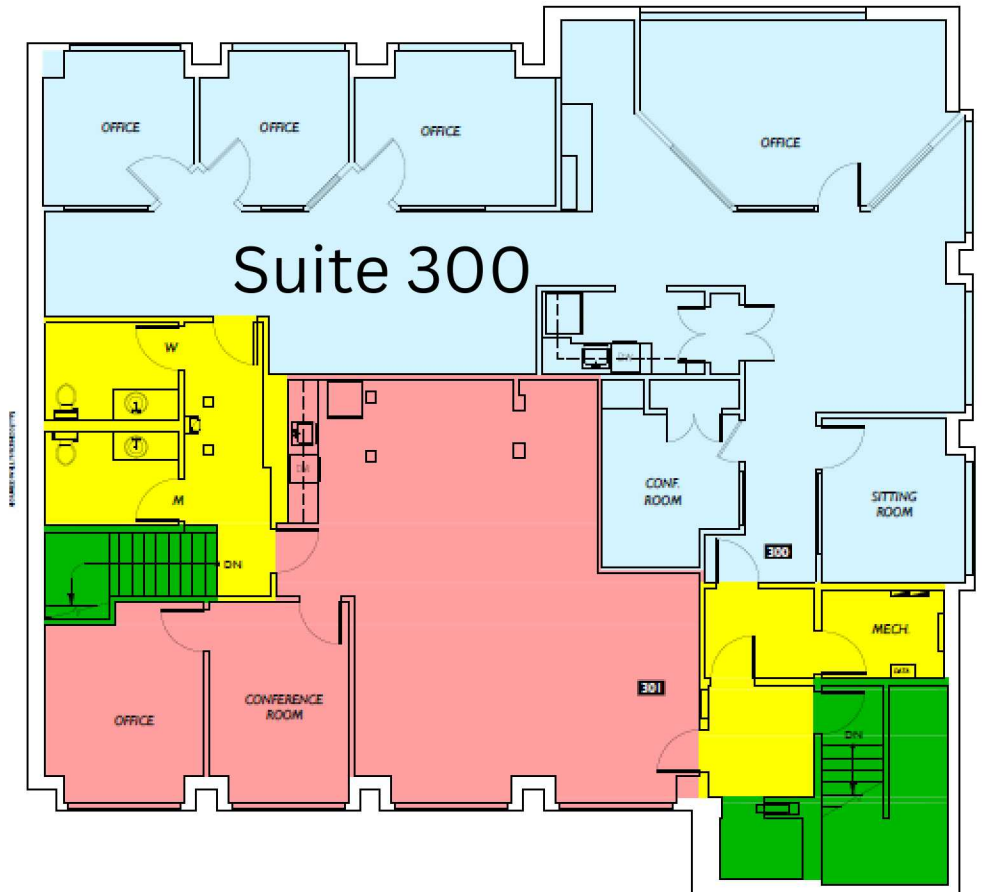
Christian Decker, CCIM
206.656.7300
Brad@Kamalor.com

Northern Passage

Office Space For Lease

3302 Fuhrman Ave E, Seattle WA 98102

Suite 300
2,459 RSF



KAMALOR
COMMERCIAL REAL ESTATE
206.656.7700

Brad Decker
206.656.7200
Brad@Kamalor.com

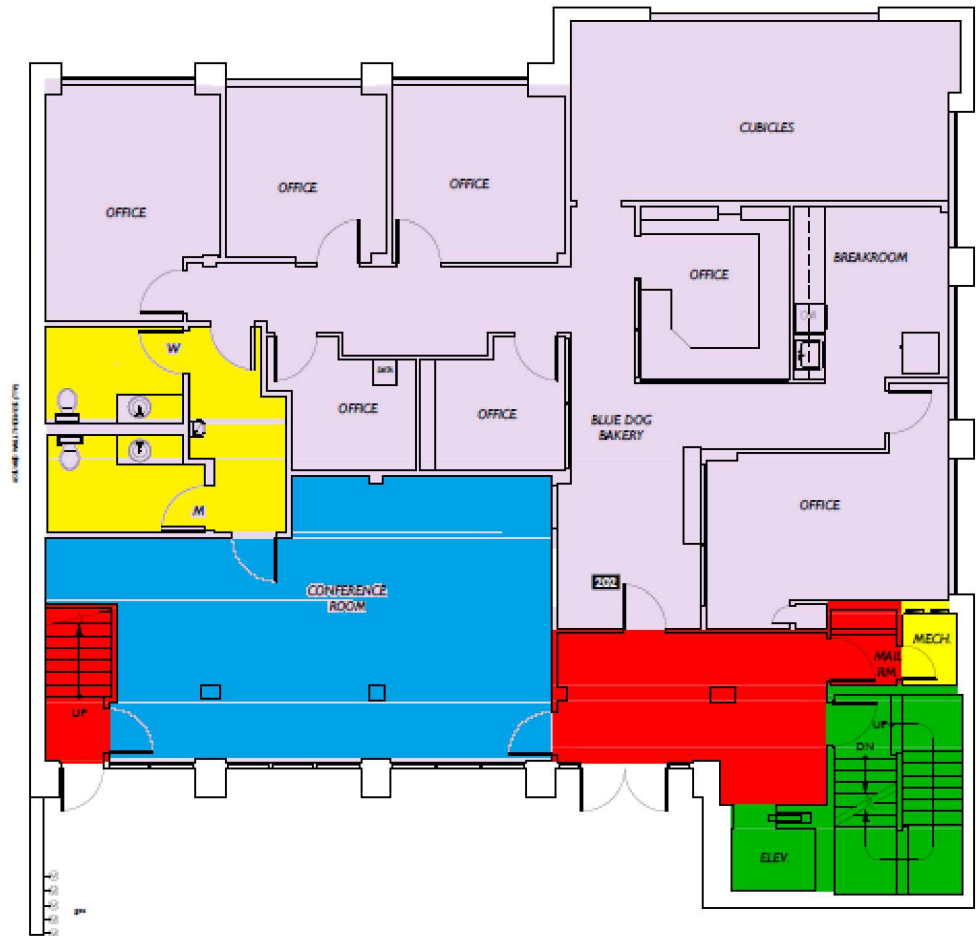
Christian Decker, CCIM
206.656.7300
Brad@Kamalor.com

Northern Passage

Office Space For Lease

3302 Fuhrman Ave E, Seattle WA 98102

Suite 201&202
684-3,224 RSF
Can be Divided



KAMALOR
COMMERCIAL REAL ESTATE
206.656.7700

Brad Decker
206.656.7200
Brad@Kamalor.com

Christian Decker, CCIM
206.656.7300
Brad@Kamalor.com

This information supplied herein is from sources we deem reliable. It is provided without any representation, warranty, or guarantee, expressed or implied as to its accuracy. Prospective Buyer or Tenant should conduct an independent investigation and verification of all matters deemed to be material, including, but not limited to, statements of income and expenses. Consult your attorney, accountant, or other professional advisor.

Northern Passage

Office Space For Lease

3302 Fuhrman Ave E, Seattle WA 98102



KAMALOR
COMMERCIAL REAL ESTATE
206.656.7700

Brad Decker
206.656.7200
Brad@Kamalor.com

Christian Decker, CCIM
206.656.7300
Brad@Kamalor.com