

FOR SUBLEASE

1530 BONNEVILLE

*16,114 SF Office Warehouse
Space with Large Yard*



1530 BONNEVILLE AVE, SNOHOMISH, WA



FOR SUBLEASE



PROPERTY HIGHLIGHTS

16,114 SF total

11,322 SF clear span warehouse

4,792 SF office on two floors

± 1 acre of yard

24' Clear ceiling height

3 grade-level doors

Easy access to Hwy-9

Call Broker for Rates

COLTON TEGLOVIC

425.281.5261

colton.teglovic@kidder.com

SARA TROY

stroy@savills.us

[KIDDER.COM](https://www.kidder.com)

[SAVILLS.US](https://www.savills.us)

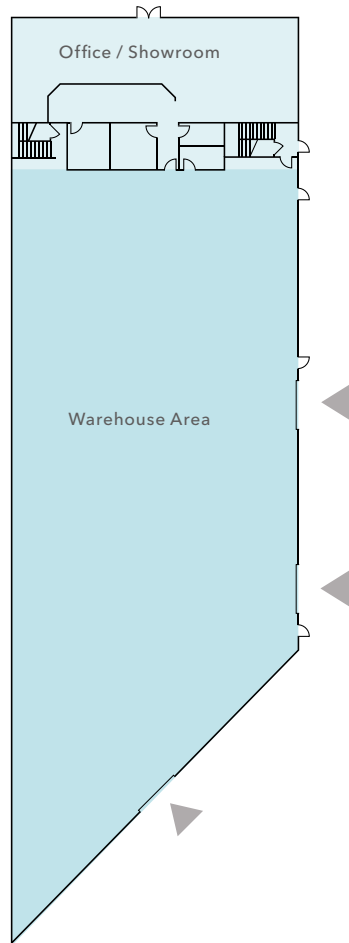
This information supplied herein is from sources we deem reliable. It is provided without any representation, warranty, or guarantee, expressed or implied as to its accuracy. Prospective Buyer or Tenant should conduct an independent investigation and verification of all matters deemed to be material, including, but not limited to, statements of income and expenses. Consult your attorney, accountant, or other professional advisor.

savills

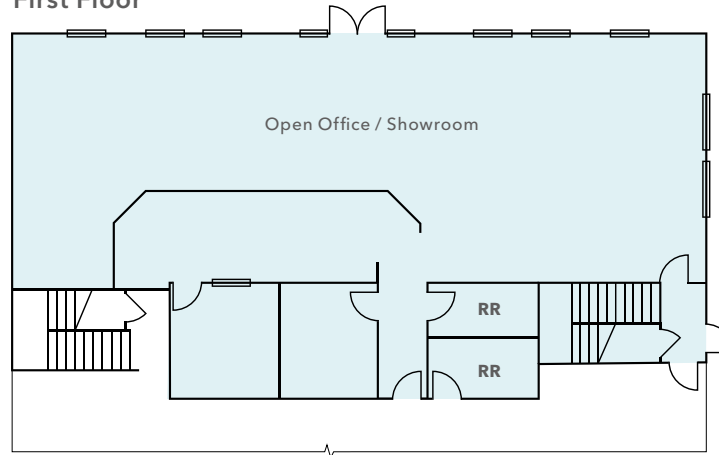
km Kidder
Mathews

FOR SUBLEASE

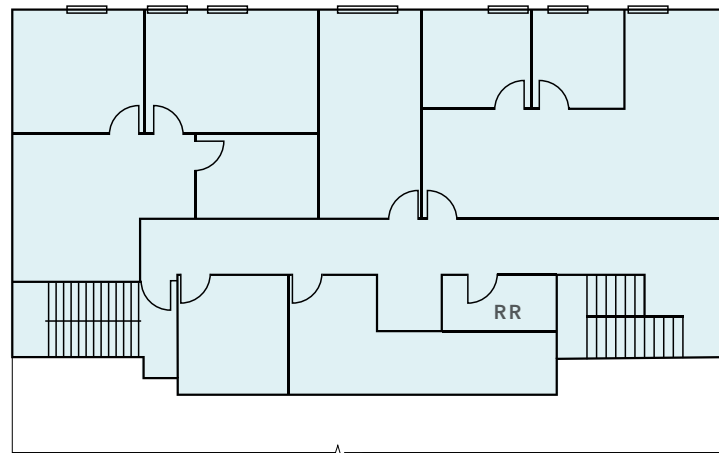
FLOOR PLAN



First Floor



Second Floor



16,114 SF

AVAILABLE

2,478 SF

FIRST FLOOR OFFICE

2,314 SF

SECOND FLOOR OFFICE

07/31/26

SUBLEASE EXPIRATION DATE

AVAILABLE

WITH 90-DAY NOTICE



Grade level loading

KIDDER.COM

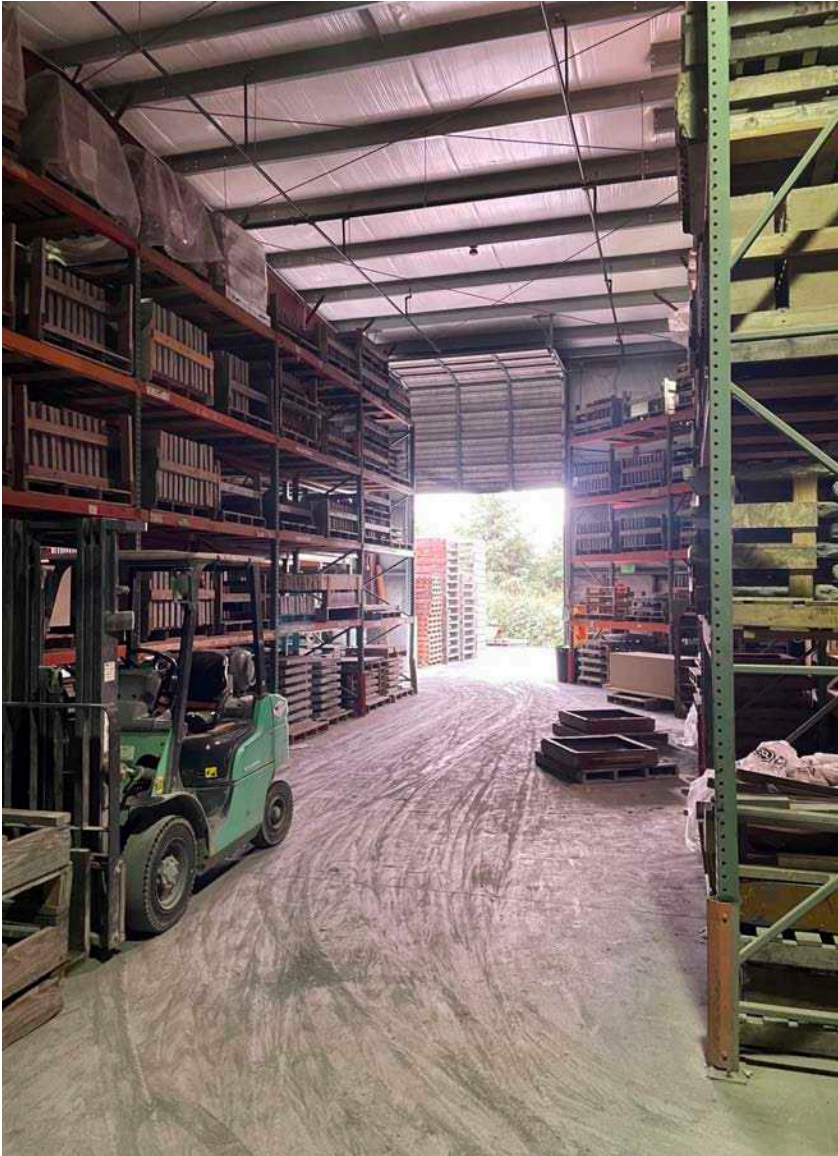
SAVILLS.US

This information supplied herein is from sources we deem reliable. It is provided without any representation, warranty, or guarantee, expressed or implied as to its accuracy. Prospective Buyer or Tenant should conduct an independent investigation and verification of all matters deemed to be material, including, but not limited to, statements of income and expenses. Consult your attorney, accountant, or other professional advisor.

savills

km Kidder Mathews

FOR SUBLEASE



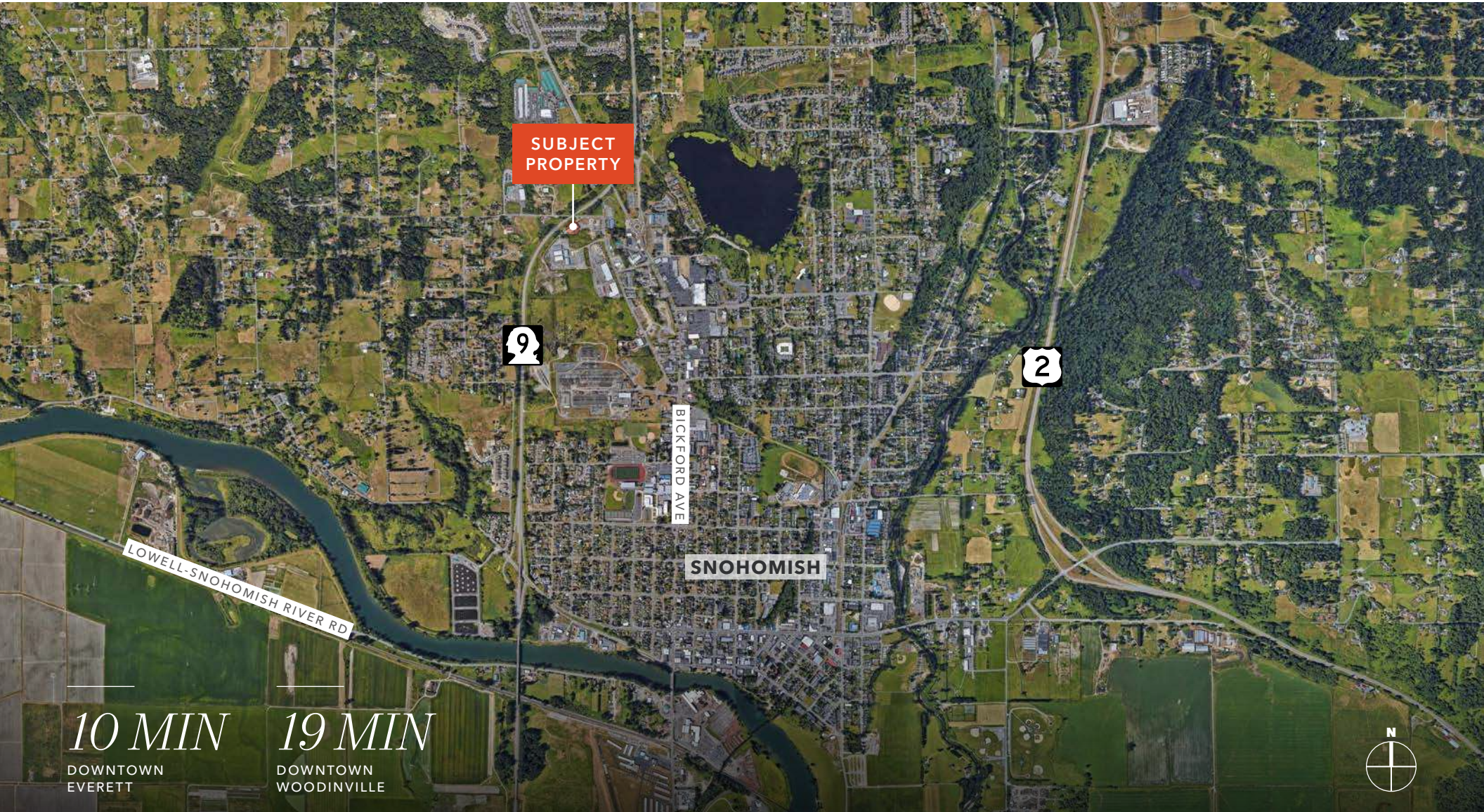
KIDDER.COM SAVILLS.US

This information supplied herein is from sources we deem reliable. It is provided without any representation, warranty, or guarantee, expressed or implied as to its accuracy. Prospective Buyer or Tenant should conduct an independent investigation and verification of all matters deemed to be material, including, but not limited to, statements of income and expenses. Consult your attorney, accountant, or other professional advisor.

savills

km Kidder Mathews

FOR SUBLEASE



KIDDER.COM

SAVILLS.US

This information supplied herein is from sources we deem reliable. It is provided without any representation, warranty, or guarantee, expressed or implied as to its accuracy. Prospective Buyer or Tenant should conduct an independent investigation and verification of all matters deemed to be material, including, but not limited to, statements of income and expenses. Consult your attorney, accountant, or other professional advisor.

savills

km Kidder Mathews