



1,756 SF Available Now

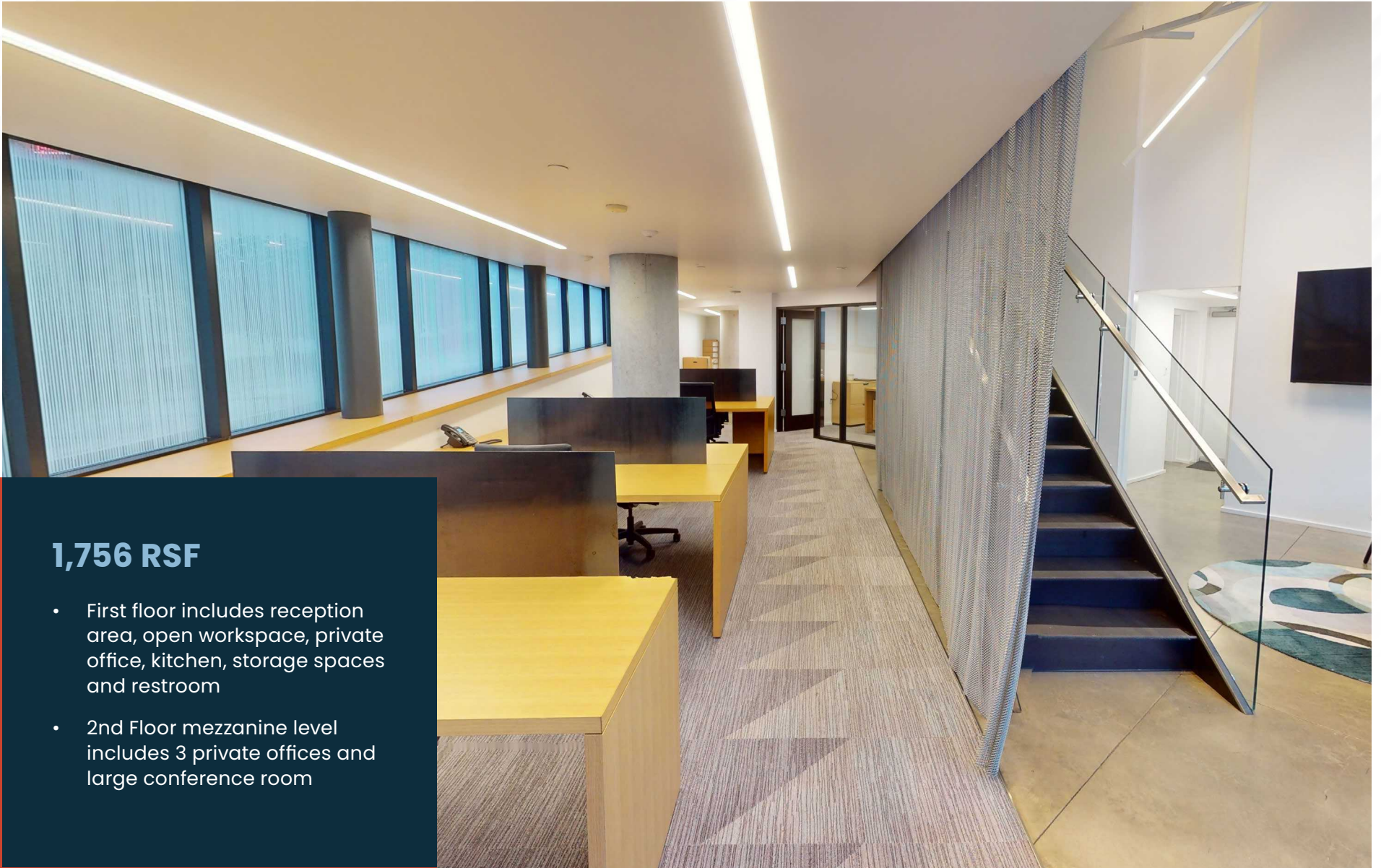
PINE MINOR

1551 MINOR AVE, SEATTLE, WA 98101

NEWMARK

Tracy Turnure
425.372.9923
tracy.turnure@nrmk.com

AVAILABILITY

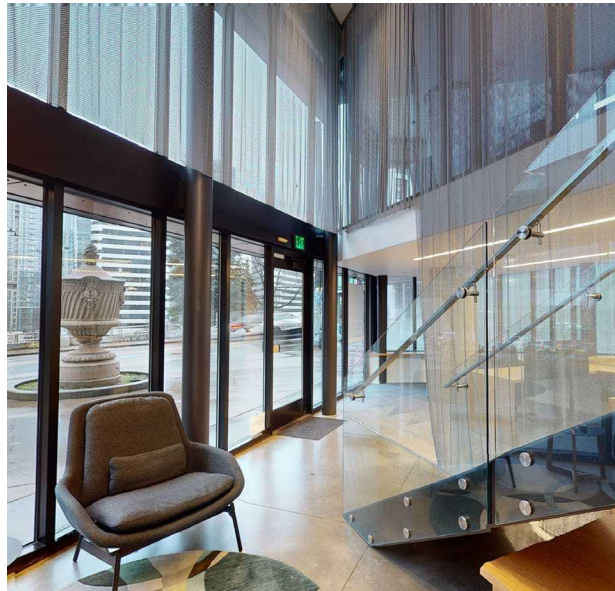


1,756 RSF

- First floor includes reception area, open workspace, private office, kitchen, storage spaces and restroom
- 2nd Floor mezzanine level includes 3 private offices and large conference room

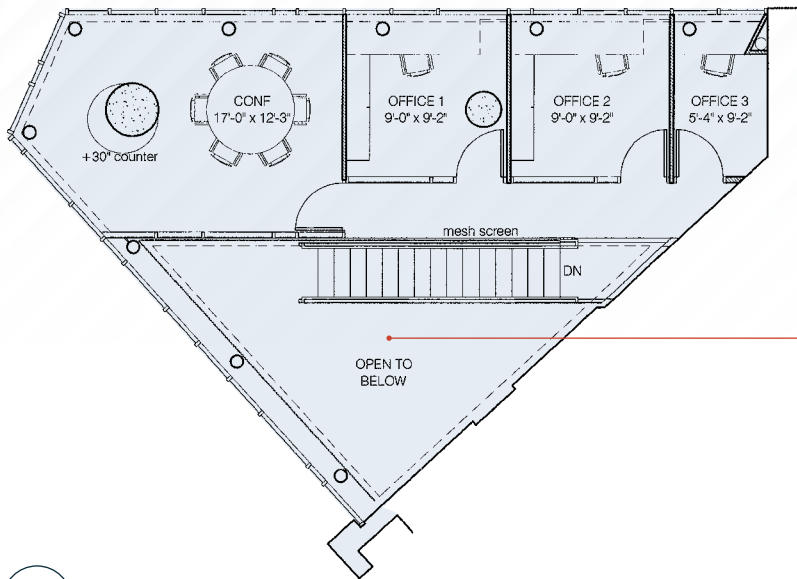
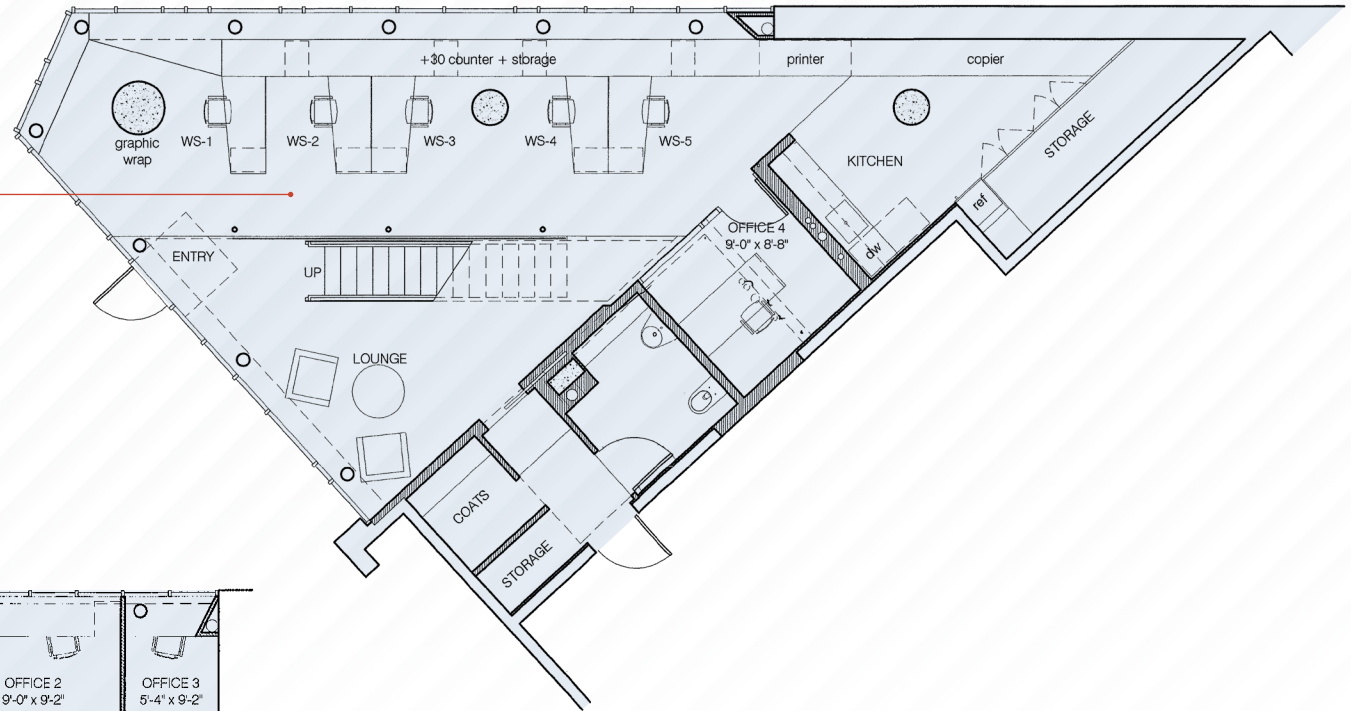


PHOTOGRAPHY



FLOOR PLANS

Floor One



Mezzanine

1,756 SF

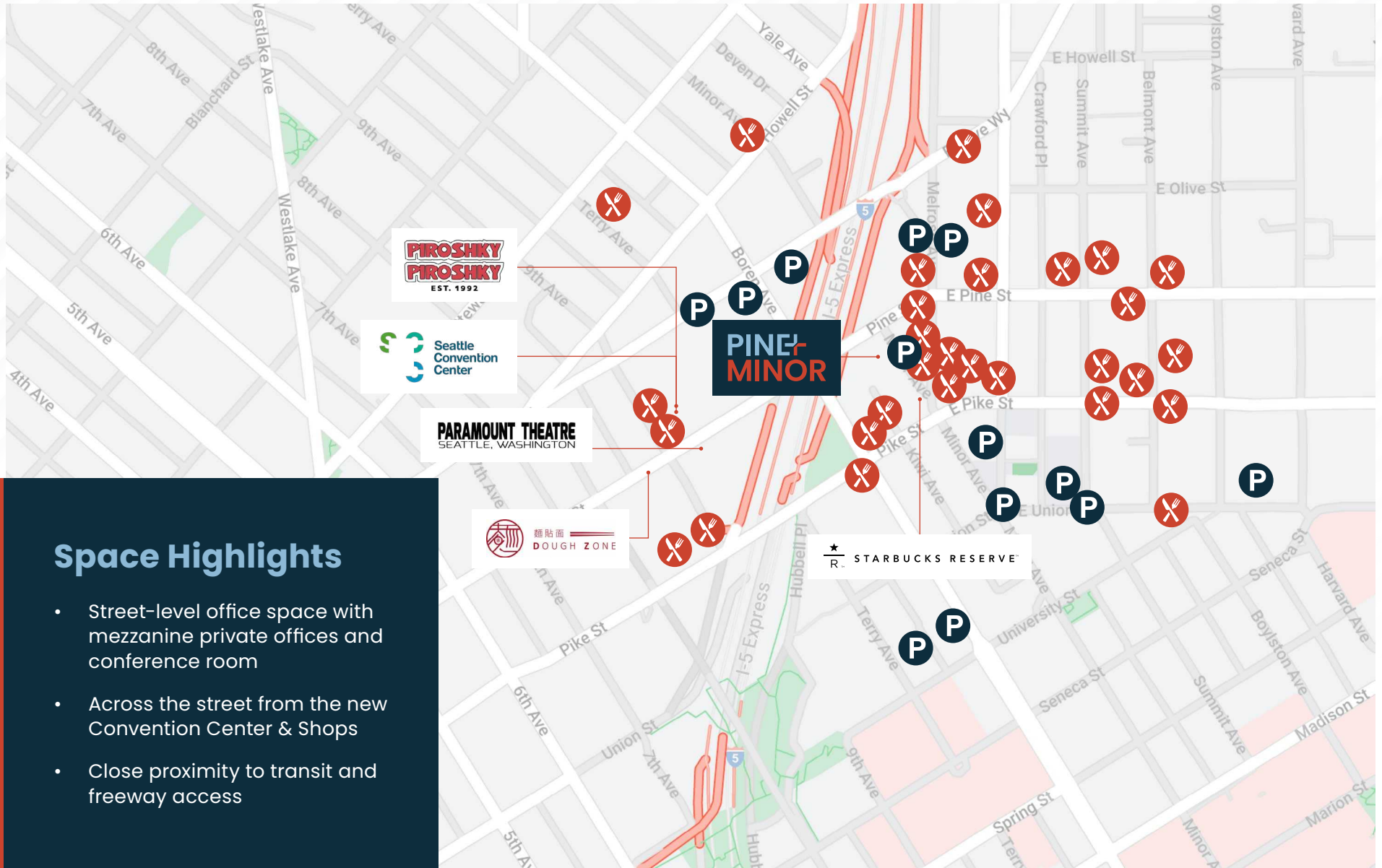
- Floor One | Available Now



VIRTUAL TOUR



LOCATION MAP



Space Highlights

- Street-level office space with mezzanine private offices and conference room
- Across the street from the new Convention Center & Shops
- Close proximity to transit and freeway access



PINE MINOR

1551 MINOR AVE, SEATTLE, WA 98101

Tracy Turnure
425.372.9923
tracy.turnure@nmrk.com

NEWMARK



The information contained herein has been obtained from sources deemed reliable but has not been verified and no guarantee, warranty or representation, either express or implied, is made with respect to such information. Terms of sale or lease and availability are subject to change or withdrawal without notice.