

# SUMMIT PROFESSIONAL BUILDING

33301 9TH AVE S, FEDERAL WAY, WA



# SUMMIT PROFESSIONAL BUILDING

Premier office building in the West Campus hub of Federal Way



**CLASS A 50,765 RSF  
OFFICE BUILDING**



**33301 9TH AVE S  
FEDERAL WAY, WA**



**3-STORIES  
BUILT IN 1990**



**220 SURFACE STALLS  
(4.30/1,000 RSF)**



**FEDERAL WAY GROWTH HAS  
SURPASSED SOUTH KING  
COUNTY MARKET**



**DEEP LABOR AND HOUSING  
POOL PROVIDES STRONG  
EMPLOYEE DEMOGRAPHICS**



**CENTRALIZED LOCATION  
FOR ACCESS TO AMENITIES,  
HOUSING AND HIGHWAYS**



**RENOVATED INTERIORS**

# SUMMIT PROFESSIONAL BUILDING



# SUMMIT PROFESSIONAL BUILDING



# SUMMIT PROFESSIONAL BUILDING

## DRIVE TIMES TO THE ALDER BUILDING

**30 MIN**

SEATTLE

**30 MIN**

BELLEVUE

**20 MIN**

TACOMA

**30 MIN**

PORT OF SEATTLE

**15 MIN**

PORT OF TACOMA

**20 MIN**

SEA-TAC AIRPORT

**15 MIN**

SOUTHCENTER MALL

**10 MIN**

AUBURN

**15 MIN**

KENT

## SOUTH KING COUNTY MAJOR EMPLOYERS

*Alaska*

**BEICU**

*BOEING*

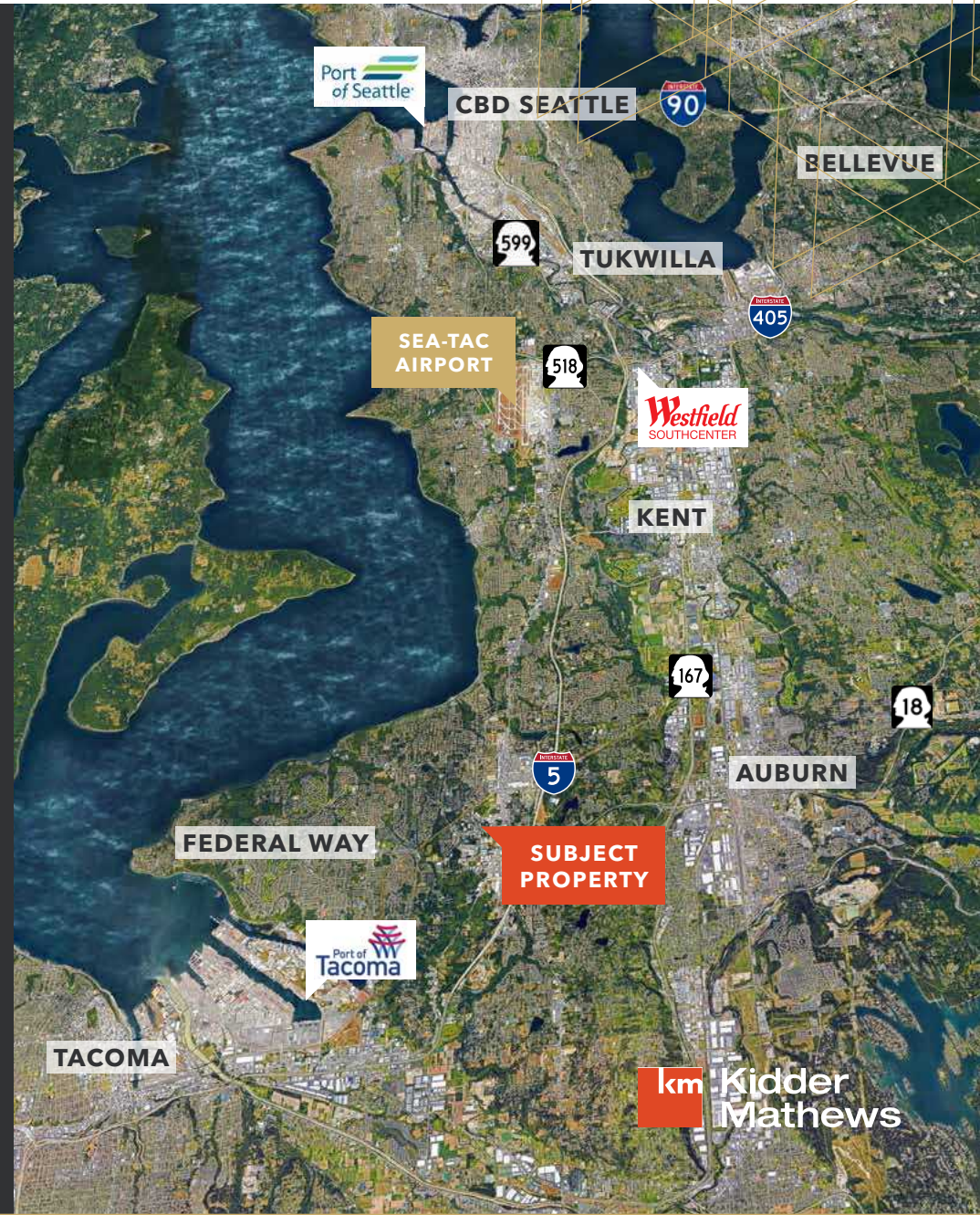
**CARLISLE**  
INTERCONNECT TECHNOLOGIES

**PACCAR**

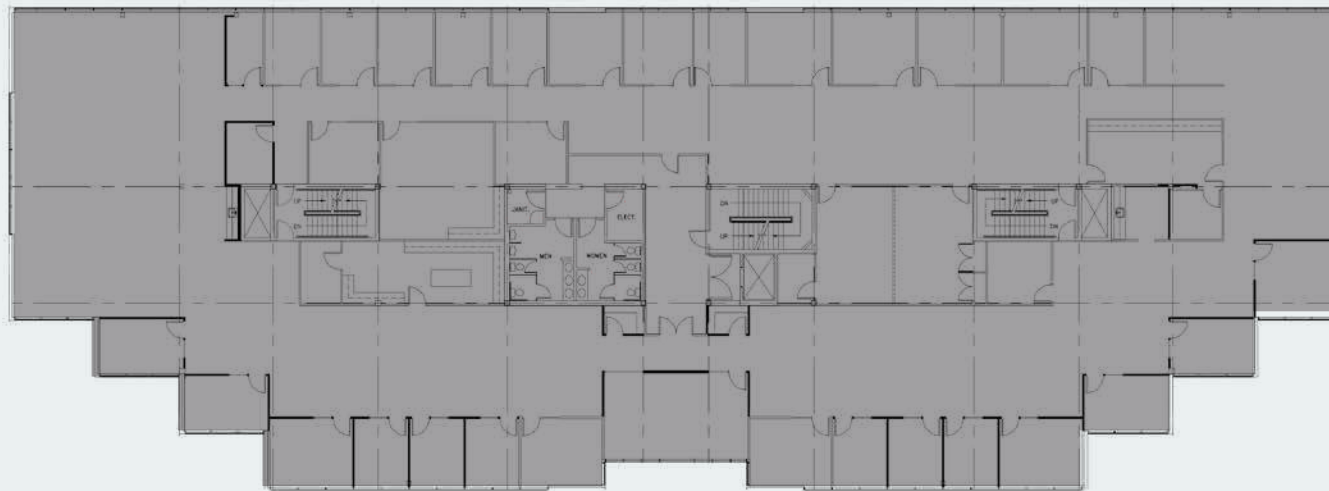
**PROVIDENCE**  
Health & Services

**RedDOT**  
CORPORATION

**UW Medicine**  
VALLEY  
MEDICAL CENTER



# SUMMIT PROFESSIONAL BUILDING



**SECOND  
FLOOR**

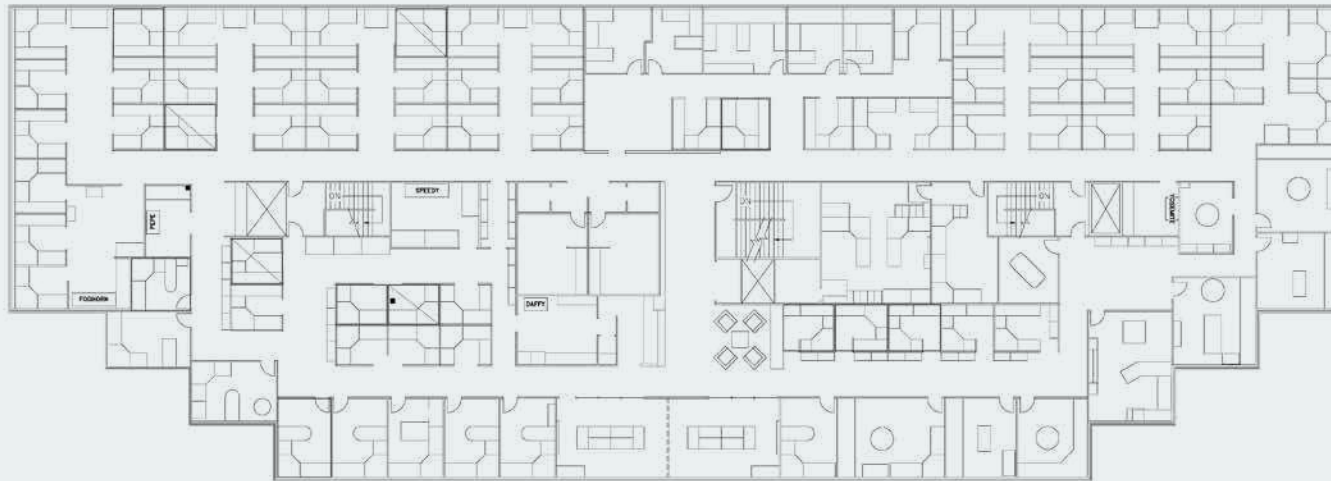
**17,771**

RENTABLE SQUARE FEET

**\$18.00**

LEASE RATE (NNN=\$9.15)

# SUMMIT PROFESSIONAL BUILDING



**THIRD  
FLOOR**

**17,036**

SQUARE FEET AVAILABLE

**\$18.00**

LEASE RATE (NNN=\$9.15)

**09.01.2023**

AVAILABLE



## For leasing information contact

**JOEL SHABEL**  
253.722.1406  
joel.shabel@kidder.com

**WILL FRAME**  
253.722.1412  
will.frame@kidder.com

**DREW FRAME**  
253.722.1433  
drew.frame@kidder.com

**KIDDER.COM**

This information supplied herein is from sources we deem reliable. It is provided without any representation, warranty, or guarantee, expressed or implied as to its accuracy. Prospective Buyer or Tenant should conduct an independent investigation and verification of all matters deemed to be material, including, but not limited to, statements of income and expenses. Consult your attorney, accountant, or other professional advisor.