

FOR LEASE RETAIL/RESTAURANT

ARBOR BLOCKS

300 8th Avenue North, Suite 117, Seattle, WA 98109



For more information please contact:

LAURA MILLER

laura@gibraltarusa.com

206.351.3573



ARBOR BLOCKS



PROPERTY HIGHLIGHTS

- Prime high-visibility, corner gem in the heart of South Lake Union, located at the base of Arbor Blocks, home to the 2-tower, 384,000 sq ft of office space occupied by FACEBOOK
- Arbor Blocks campus features a tree-lined shared street, prioritized for cyclists and pedestrians, making for an incredibly pedestrian friendly traffic flow
- New warm shell buildout includes HVAC, electrical panel, finished concrete floors, and ADA bathroom installed
- Type 1 hood shaft, extremely large storefront windows, dedicated patio seating area, and high ceilings
- Ideal for coffee, restaurant, retail, salon
- 27 public parking stalls (validation program available); monthly garage parking \$300/stall
- 1,363 sq ft
- Available Now
- Rental Rate \$40/SF plus est. NNN (\$16.09/SF) = \$6,370.89 per month



89

TRANSIT SCORE



97

WALK SCORE



83

BIKE SCORE



195,447

TOTAL POPULATION



109,105

TOTAL HOUSEHOLDS

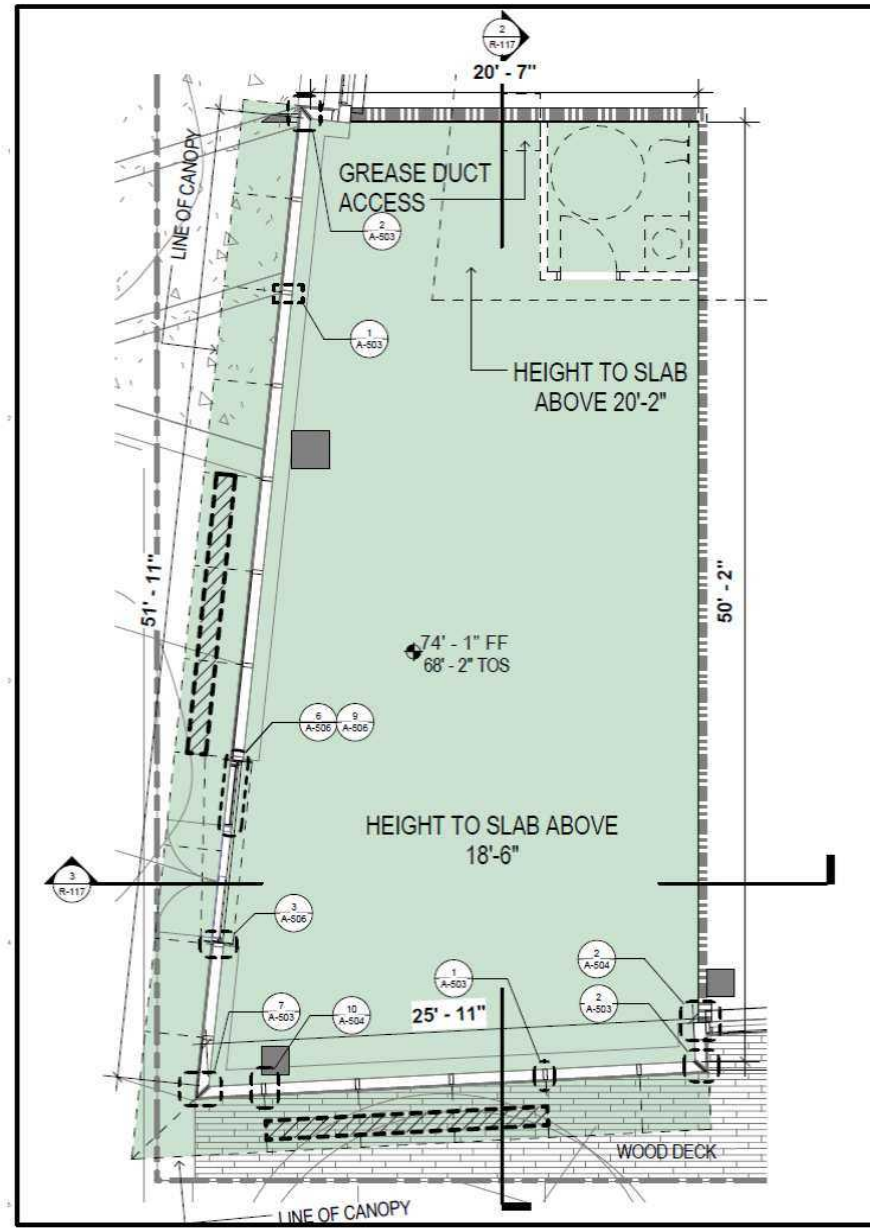


\$135,917

AVERAGE INCOME

* 2022 Demographics based on a 2 mile radius

ARBOR BLOCKS

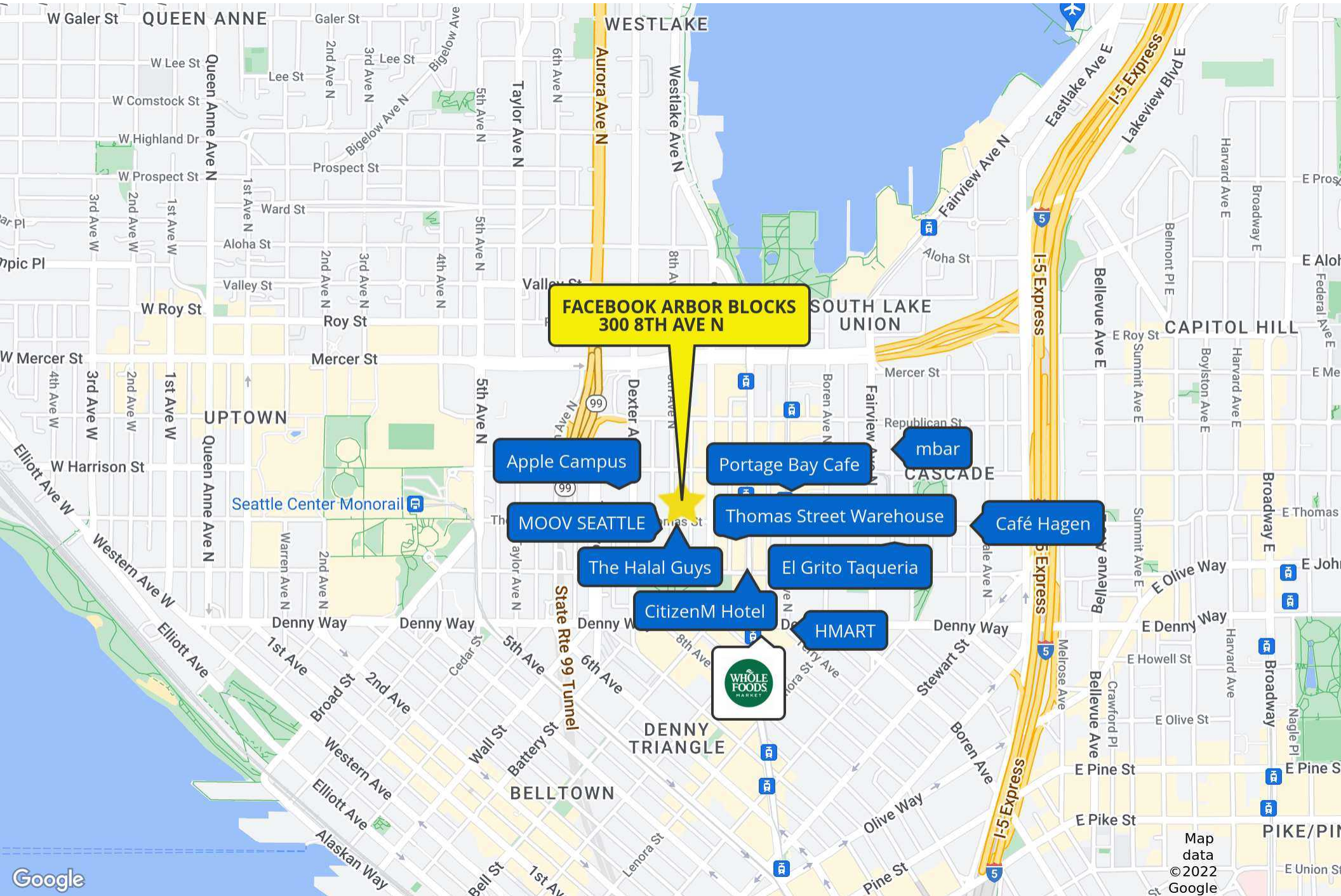


1 SOUTH RETAIL SUITE 0117 1,363 SF
1/4" = 1'-0"



 = RETAIL CANOPY SIGNAGE LOCATION

ARBOR BLOCKS



FACEBOOK ARBOR BLOCKS
300 8TH AVE N

Apple Campus

Portage Bay Cafe

mbar

MOOV SEATTLE

Thomas Street Warehouse

Café Hagen

The Halal Guys

El Grito Taqueria

CitizenM Hotel

HMART

