



FOR LEASE

# Union Ave Medical Building

1530 SOUTH UNION AVENUE | TACOMA, WA



**Kidder  
Mathews**

This information supplied herein is from sources we deem reliable. It is provided without any representation, warranty, or guarantee, expressed or implied as to its accuracy. Prospective Buyer or Tenant should conduct an independent investigation and verification of all matters deemed to be material, including, but not limited to, statements of income and expenses. Consult your attorney, accountant, or other professional advisor.

[KIDDER.COM](http://KIDDER.COM)



FOR LEASE

# Union Ave Medical Building

1530 SOUTH UNION AVENUE | TACOMA, WA



## Medical/Office Building Located Near Allenmore Hospital

**SUITE 20** 1,400 SF

**\$24.00 PSF, NNN**

**JOIN** MultiCare Health Systems, Seattle NTC & MIDC

**ONSITE** office parking available at 4.5 stalls/  
1,000 SF

**LOCATED** in close proximity to Allenmore  
Hospital Campus with easy access to Highway 16

**GREAT** signage fronting on Union Avenue

**NEW** landscape and parking lot improvements

**NEW** elevator installed

KIDDER.COM

This information supplied herein is from sources we deem reliable. It is provided without any representation, warranty, or guarantee, expressed or implied as to its accuracy. Prospective Buyer or Tenant should conduct an independent investigation and verification of all matters deemed to be material, including, but not limited to, statements of income and expenses. Consult your attorney, accountant, or other professional advisor.

**km** Kidder  
Mathews



FOR LEASE

# Union Ave Medical Building

1530 SOUTH UNION AVENUE | TACOMA, WA



KIDDER.COM

This information supplied herein is from sources we deem reliable. It is provided without any representation, warranty, or guarantee, expressed or implied as to its accuracy. Prospective Buyer or Tenant should conduct an independent investigation and verification of all matters deemed to be material, including, but not limited to, statements of income and expenses. Consult your attorney, accountant, or other professional advisor.

**km** Kidder Mathews

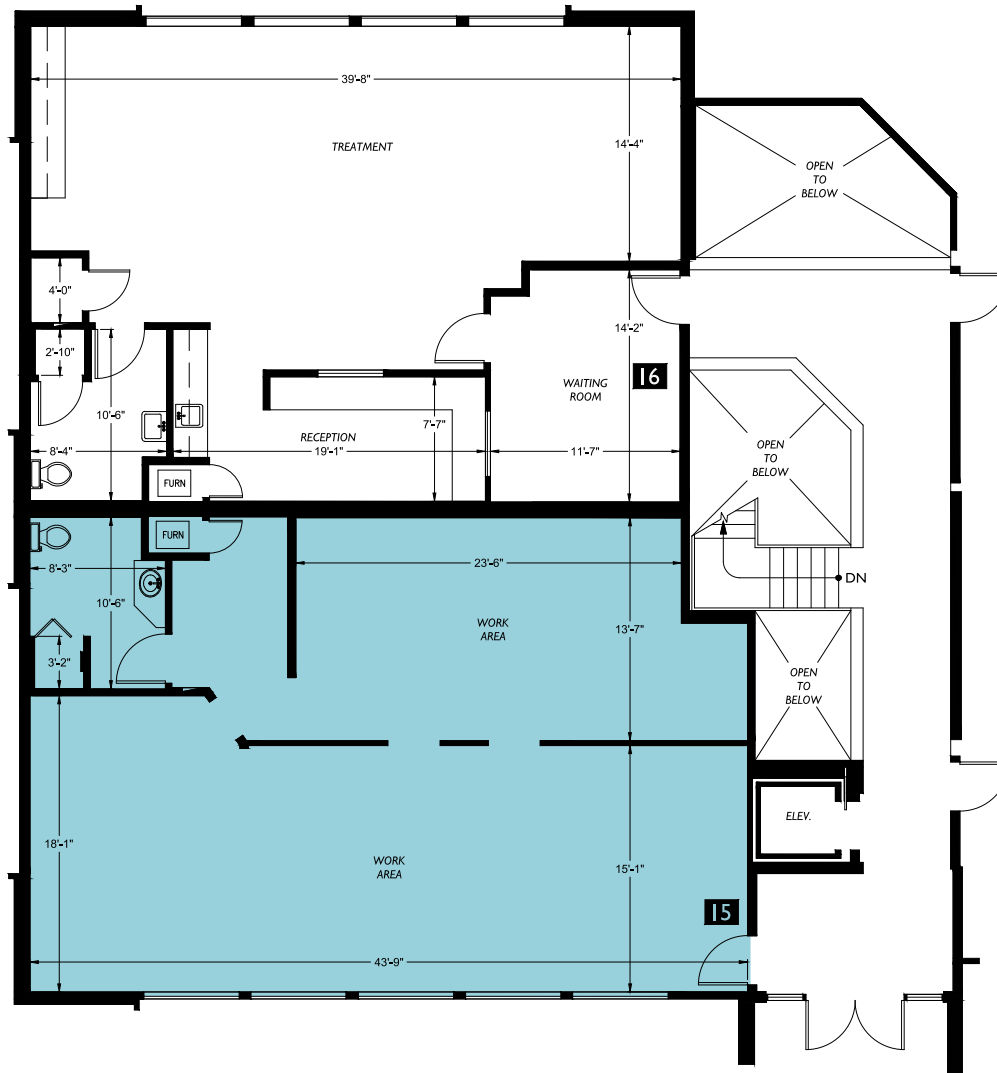


FOR LEASE

# Union Ave Medical Building

1530 SOUTH UNION AVENUE | TACOMA, WA

## Suite 20



1,400

SQUARE FEET

\$24.00

PSF, NNN

**BENJAMIN A. NORBE**

253.722.1410

[ben.norbe@kidder.com](mailto:ben.norbe@kidder.com)

**WILL FRAME**

253.722.1412

[will.frame@kidder.com](mailto:will.frame@kidder.com)

**DREW FRAME**

253.722.1433

[drew.frame@kidder.com](mailto:drew.frame@kidder.com)

KIDDER.COM

This information supplied herein is from sources we deem reliable. It is provided without any representation, warranty, or guarantee, expressed or implied as to its accuracy. Prospective Buyer or Tenant should conduct an independent investigation and verification of all matters deemed to be material, including, but not limited to, statements of income and expenses. Consult your attorney, accountant, or other professional advisor.

