

# FOR LEASE

5401 32nd Avenue  
Gig Harbor, WA 98335

## TOWNE PLAZA



**TOWNE PLAZA**  
Jamie Firth | Lisa Tallman

First Western Properties—Tacoma Inc. | 253.472.0404  
6402 Tacoma Mall Blvd, Tacoma, WA 98409 | fwp-inc.com

**TOWN PLAZA** is located at the Olympic Interchange on the West side of Highway 16, Towne Plaza offers 25,700+ sq.ft. of timeless quality design in sought after business core of Gig Harbor. All tenant improvements have/will be completed with quality, modern finishes. Many amenities within walking distance!



**5401 32ND AVENUE:**

**SUITE 101: 3,711 SF     \$25.00 PSF, NNN**

- 3 Minute Drive to Highway 16 full Interchange
- Professional Business Park Setting: B-2 Zoning
- Generous Parking on Site - 1/300
- Exceptional Natural Light
- NNN Estimate: \$6.75 PSF (2023)



Population



Average HH Income



Daytime Population

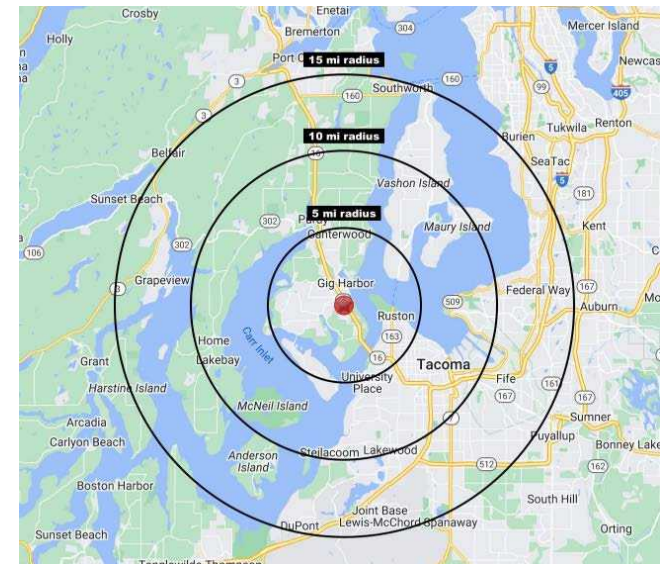
Regis - 2023

	Population	Average HH Income	Daytime Population
Mile 1	11,000	\$85,954	65,954
Mile 3	52,000	\$95,592	85,592
Mile 5	118,957	\$108,957	108,957

**NEARBY AMENITIES**

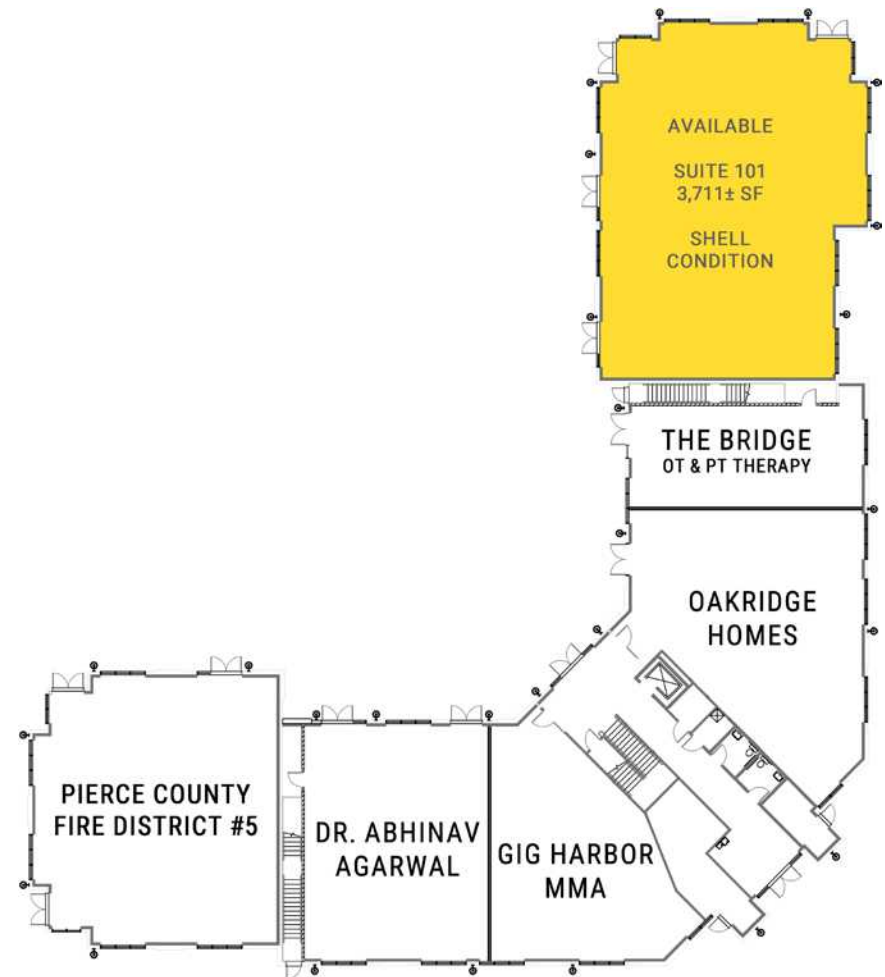


metropolitanmarket®





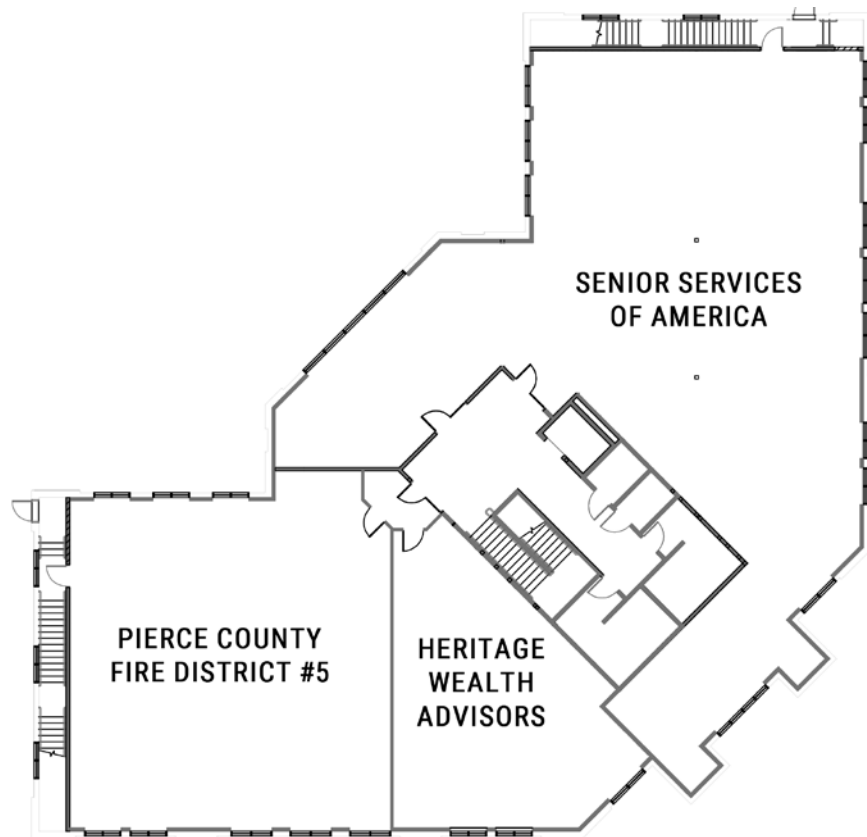
MAIN FLOOR



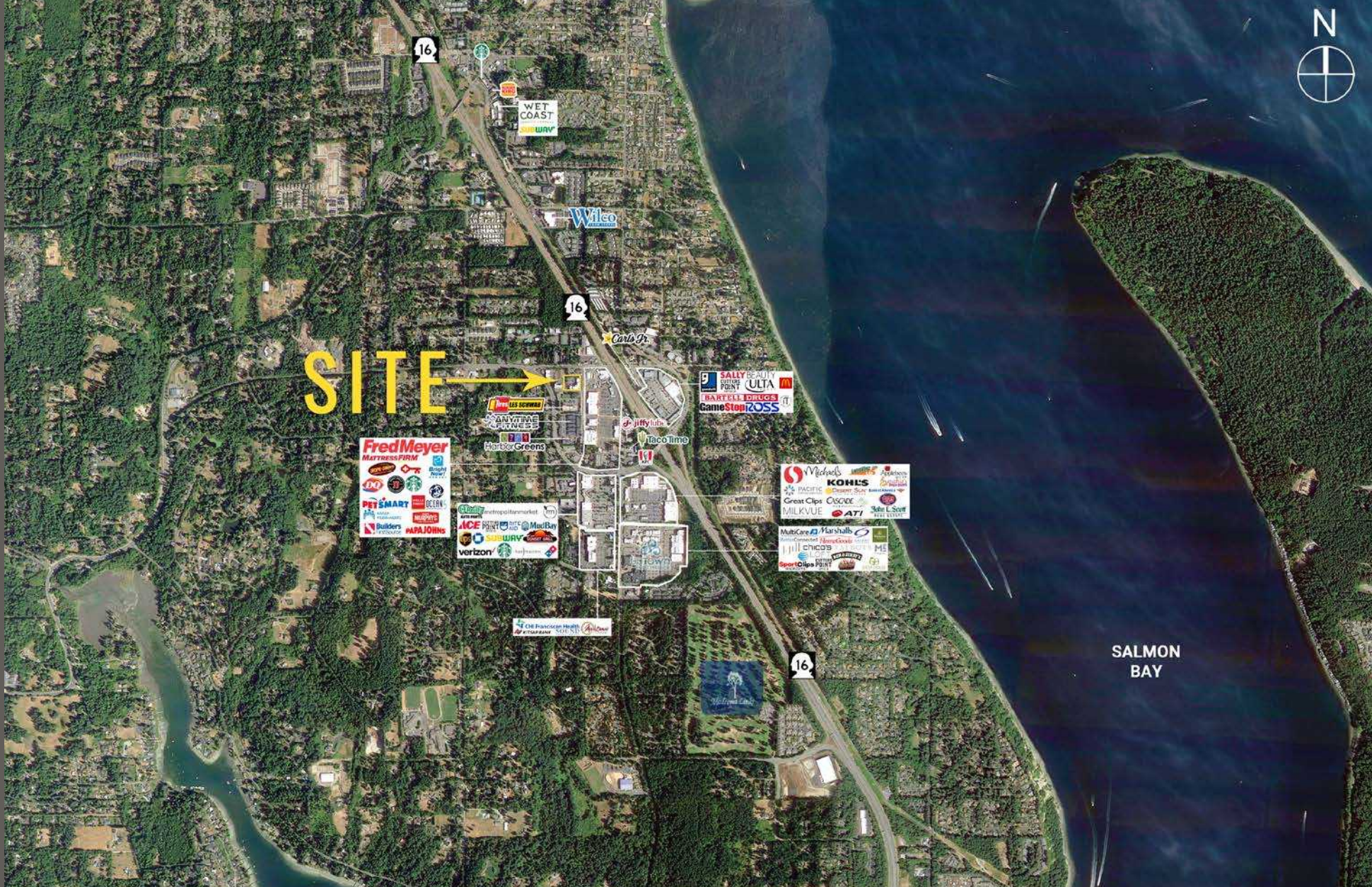
Suite	SF	Tenant
100	2,155	Oakridge Homes
101	3,711	AVAILABLE
104	1,098	The Bridge OT & PT Therapy
105	1,755	Gig Harbor MMA
106	1,618	Dr. Abhinav Agarwal
107	2,684	Pierce County Fire District #5

# UPPER FLOOR

Suite	SF	Tenant
200	1,154	Heritage Wealth Advisors
201	4,200	Senior Services of America
202	2,278	Pierce County Fire District #5



LOCATION DETAILS



Located Across from  
Olympic Towne Center



Moments from  
Freeway Access

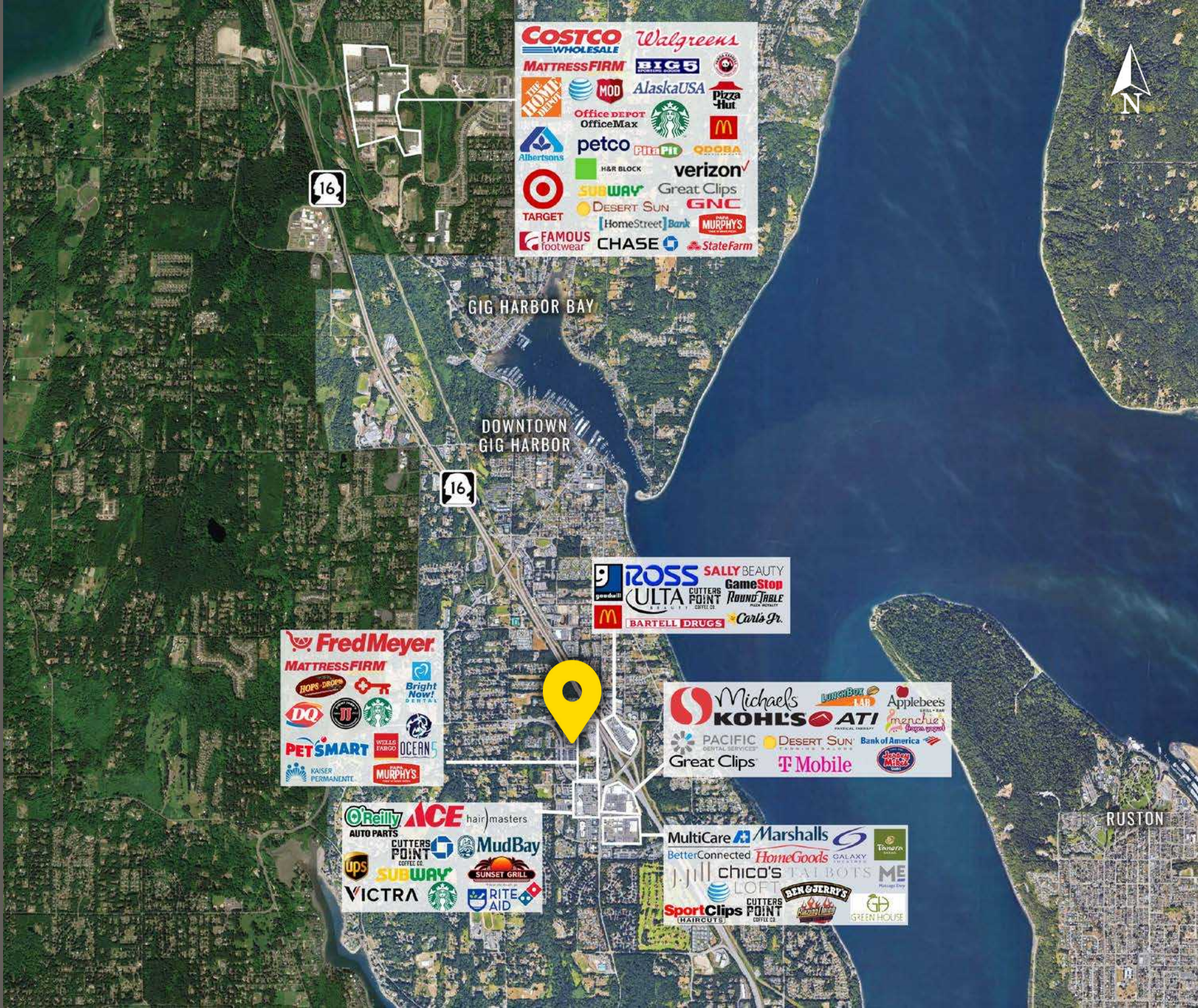


12,467 ADT  
Olympic Drive



8,440 ADT  
Point Fosdick Drive

LOCATION AERIAL



**COSTCO WHOLESALE** Walgreens  
MATTRESS FIRM BIG 5  
THE HOME DEPOT MOD AlaskaUSA Pizza Hut  
Office DEPOT OfficeMax Starbucks McDonald's  
Albertsons petco PITA PIT QDOBA  
H&R BLOCK verizon  
TARGET SUBWAY Great Clips  
DESERT SUN GNC  
FAMOUS footwear [HomeStreet] Bank MURPHY'S  
CHASE State Farm

**Fred Meyer**  
MATTRESS FIRM  
HOPS & DRINKS Bright Now! DENTAL  
DQ TJ Starbucks  
PET SMART WELLS FARGO OCEAN 5  
KAISER PERMANENTE MURPHY'S

ROSS SALLY BEAUTY  
gamestop  
ULTRA CUTTERS POINT ROUND TABLE  
BARTELL DRUGS Carl's Jr.

Michaels Lunch Box Applebee's  
KOHL'S ATI  
PACIFIC DENTAL SERVICES DESERT SUN Bank of America  
Great Clips T Mobile

O'Reilly ACE hair masters  
AUTO PARTS  
CUTTERS POINT MUD BAY  
UPS SUBWAY SUNSET GRILL  
VICTRA STARBUCKS RITE AID

MultiCare Marshalls  
BetterConnected HomeGoods GALAXY  
chico's LOFT TAJBO'S ME  
Sport Clips CUTTERS POINT BEN & JERRY'S GREEN HOUSE



**GIG HARBOR, WA** is both a bay on the Puget Sound and a harbor town that has been named one of the Smithsonian Magazines Top Five Small Towns for culture, heritage and charm. Its unique location, close to metropolitan centers, yet positioned on a quiet, beautiful and historic peninsula - provides visitors and residents with excellent site-seeing, history, culture, dining, shopping and more.

TACOMA | KIRKLAND | PORTLAND | SEATTLE

RELATIONSHIP FOCUSED. RESULTS DRIVEN.

**JAMIE FIRTH**

253.284.3649  
jamie@firstwesternproperties.com

**LISA TALLMAN**

253.471.5504  
lisa@firstwesternproperties.com



First Western Properties—Tacoma Inc. | 253.472.0404  
6402 Tacoma Mall Blvd, Tacoma, WA 98409 | fwp-inc.com

© First Western Properties, Inc. DISCLAIMER: The above information has been secured from sources believed to be reliable, however, no representations are made to its accuracy. Prospective tenants or buyers should consult their professional advisors and conduct their own independent investigation. Properties are subject to change in price and/or availability without notice.