

# Kinect @ Burien

RETAIL FOR LEASE

631 SW 150th Street w Burien, WA 98166

NEW CONSTRUCTION - NOW AVAILABLE

± 2,123 - 8,909 SF

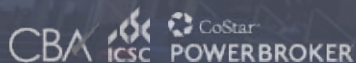
PRIME RETAIL FOR  
LEASE ON THE  
GROUND FLOOR OF  
230 UNIT PROJECT,  
KINECT @ BURIEN

Adjacent to Burien Town Square, this new construction offers up to 8,909 continuous square feet of retail space. Local restaurants, boutique retail, and year-round activities, including a downtown Farmer's Market and monthly art walks, bring high foot traffic and visibility to the immediate area. Join the vibrant and charming downtown Burien business community.

Tiffini Connell | Jonathan Willett | Kara Farley

(206) 283-5212

[www.wccommercialrealty.com](http://www.wccommercialrealty.com)



DISCLAIMER: The above information has been secured from sources believed to be reliable, however, no representations are made to its accuracy. Prospective tenants or buyers should consult their professional advisors and conduct their own independent investigation. Site plan and configuration are subject to change. Properties are subject to change in price and/or availability without notice. West Coast Commercial Realty, LLC

WCCR

West Coast Commercial Realty

# Kinect @ Burien

631 SW 150th Street w Burien, WA 98166



Tiffini Connell

Jonathan Willett

Kara Farley

(206) 283-5212

[www.wccommercialrealty.com](http://www.wccommercialrealty.com)

## WCCR

West Coast Commercial Realty

CBA ICSC CoStar POWERBROKER

DISCLAIMER: The above information has been secured from sources believed to be reliable, however, no representations are made to its accuracy. Prospective tenants or buyers should consult their professional advisors and conduct their own independent investigation. Site plan and configuration are subject to change. Properties are subject to change in price and/or availability without notice. West Coast Commercial Realty, LLC

# Kinect @ Burien

631 SW 150th Street w Burien, WA 98166



631 Southwest 150th Street has a Walk Score of 94 out of 100. This location is a Walker's Paradise so daily errands do not require a car.

This location is in Burien. Nearby parks include Town Square Park, Dottie Harper Park and Lakeview Park.

## DEMOGRAPHICS



### TOTAL POPULATION

1-Mile: 26,556  
2-Mile: 54,747  
5-Mile: 207,398



### TOTAL EMPLOYEES

1-Mile: 11,867  
2-Mile: 15,338  
5-Mile: 98,018



### AVERAGE HOUSEHOLD INCOME

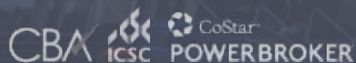
1-Mile: \$95,986  
2-Mile: \$103,280  
5-Mile: \$102,735



Tiffini Connell | Jonathan Willett | Kara Farley

(206) 283-5212

[www.wccommercialrealty.com](http://www.wccommercialrealty.com)



DISCLAIMER: The above information has been secured from sources believed to be reliable, however, no representations are made to its accuracy. Prospective tenants or buyers should consult their professional advisors and conduct their own independent investigation. Site plan and configuration are subject to change. Properties are subject to change in price and/or availability without notice. West Coast Commercial Realty, LLC

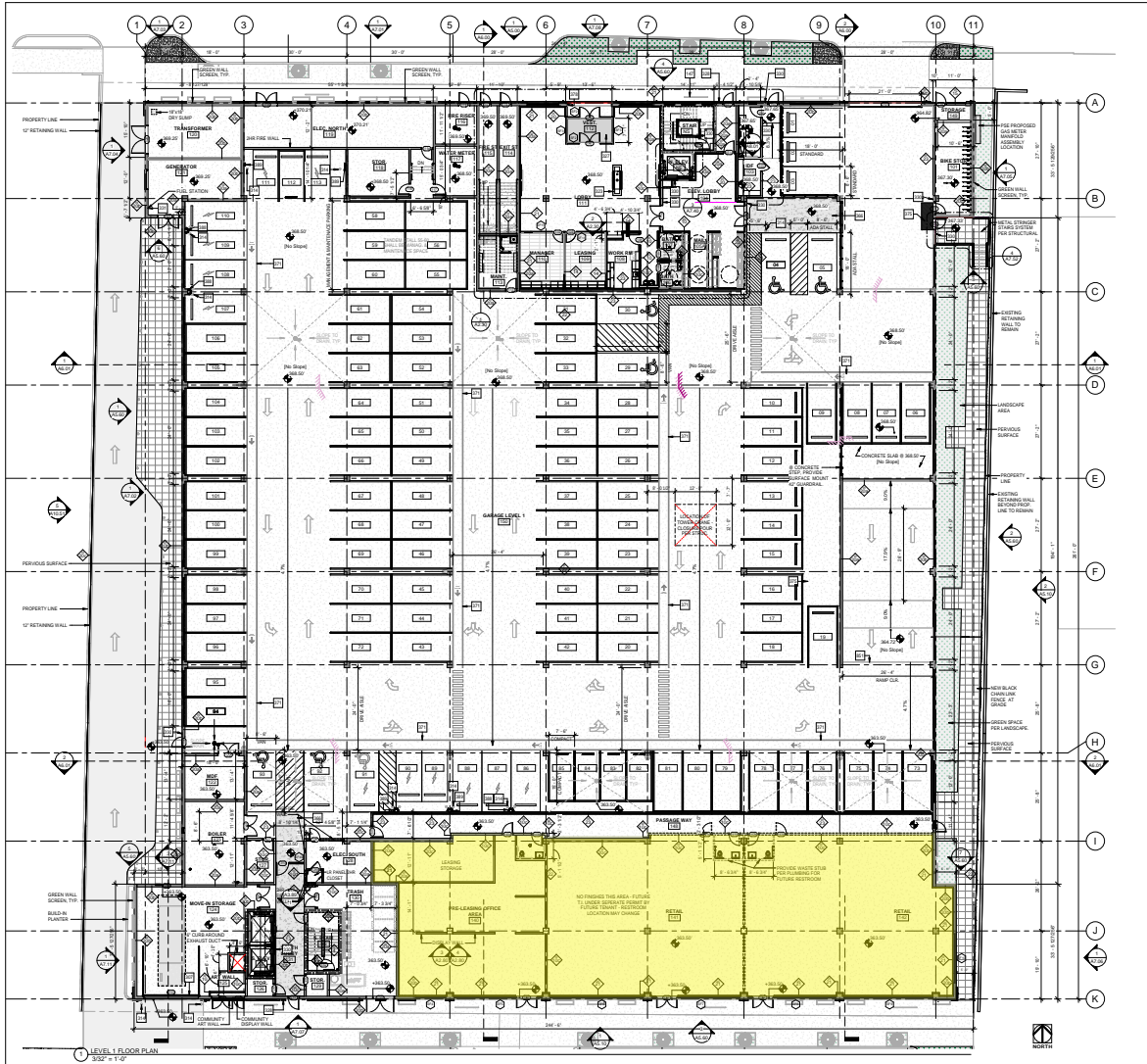
# WCCR

West Coast Commercial Realty

# Kinect @ Burien

631 SW 150th Street w Burien, WA 98166

± 2,123 - 8,909 SF PRIME RETAIL FOR LEASE

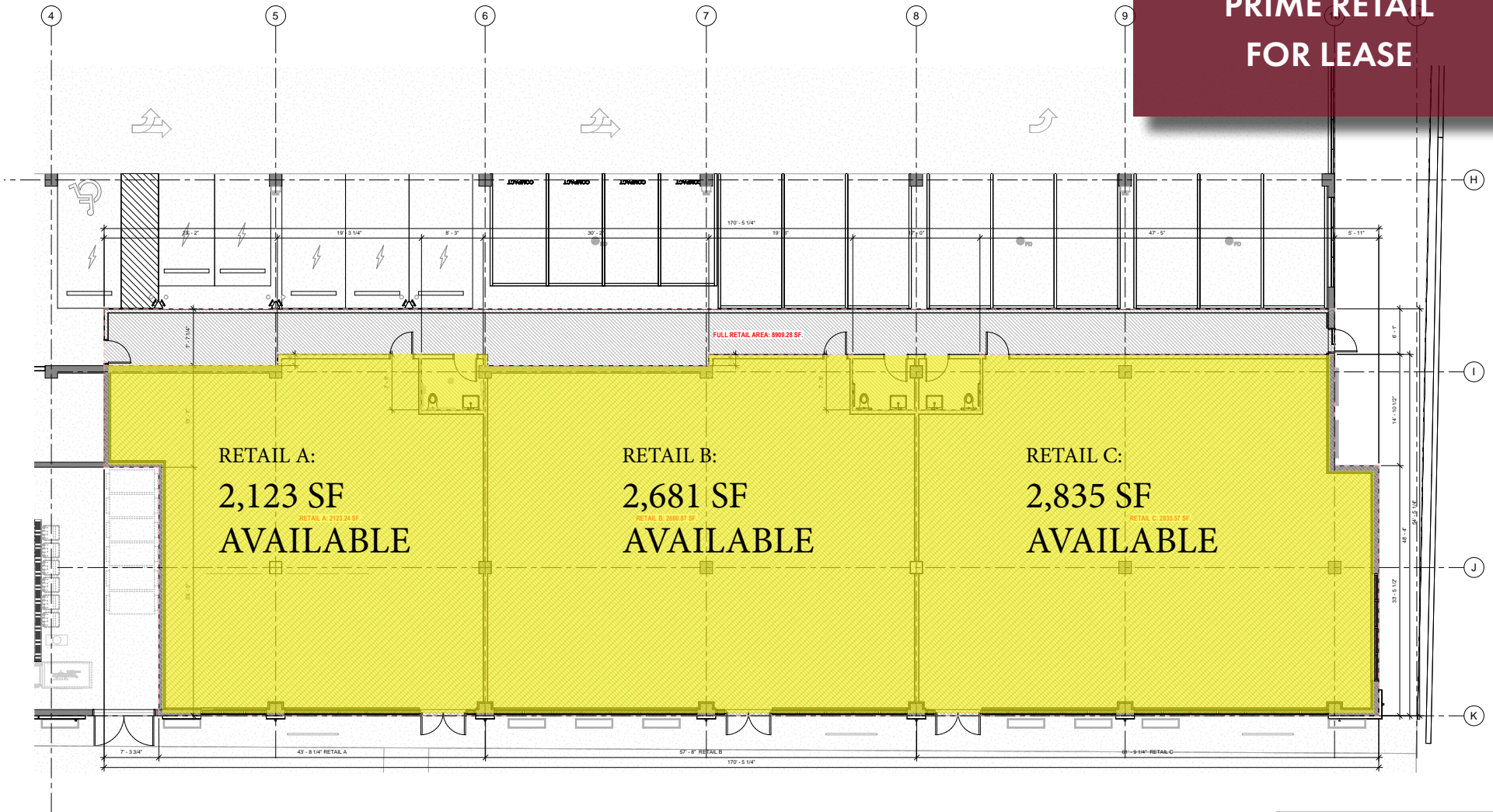


# Kinect @ Burien

631 SW 150th Street w Burien, WA 98166

## FLOOR PLAN

**± 2,123 - 8,909 SF**  
**PRIME RETAIL**  
**FOR LEASE**



Tiffini Connell | Jonathan Willett | Kara Farley

(206) 283-5212

[www.wccommercialrealty.com](http://www.wccommercialrealty.com)

**WCCR**

West Coast Commercial Realty

DISCLAIMER: The above information has been secured from sources believed to be reliable, however, no representations are made to its accuracy. Prospective tenants or buyers should consult their professional advisors and conduct their own independent investigation. Site plan and configuration are subject to change. Properties are subject to change in price and/or availability without notice. West Coast Commercial Realty, LLC

