



WCCR  
West Coast Commercial Realty

# RESTAURANT SPACE FOR LEASE

307 Westlake Ave N | Seattle, WA 98109



307  
WESTLAKE

Westlake Ave N

A  BioMed Realty property



# 307 WESTLAKE

Situated at the corner of Westlake Ave N and Thomas St in South Lake Union, this 1,300 square foot, 2nd generation restaurant space offers versatility for food and beverage endeavors. The location is centrally positioned amid tech hubs, residents, and local businesses making it a strategic choice for companies looking to integrate into a dynamic community. With an open layout and prime visibility, this space provides an opportunity for businesses seeking a foothold in the heart of South Lake Union.



99

Walk Score  
"Walker's Paradise"



89

Transit Score  
"Excellent Transit"



77

Bike Score  
"Very Bikeable"



# STRONG DEMOGRAPHICS

## TOTAL POPULATION

1-Mile: 89,040  
2-Mile: 184,051  
3-Mile: 273,092

## AVERAGE HOUSEHOLD INCOME

1-Mile: \$135,055  
2-Mile: \$134,533  
3-Mile: \$137,030



# LOCATED IN THE HEART OF SOUTH LAKE UNION

Located within 0.5 miles

135

Restaurants, Bars & Cafes

2

National Grocers

50

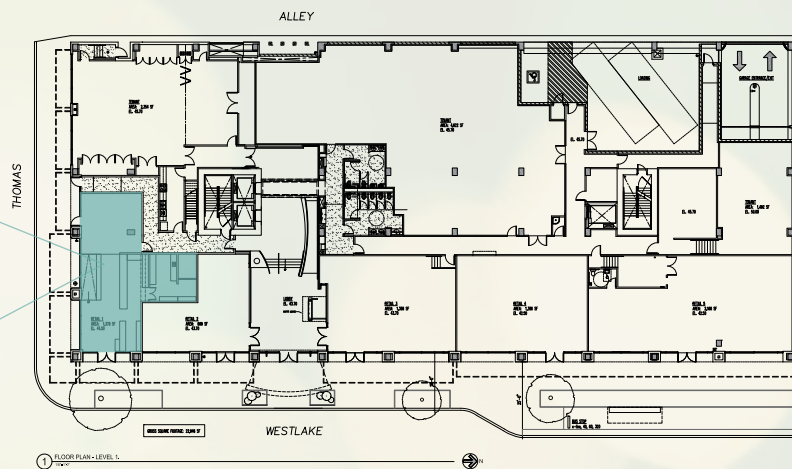
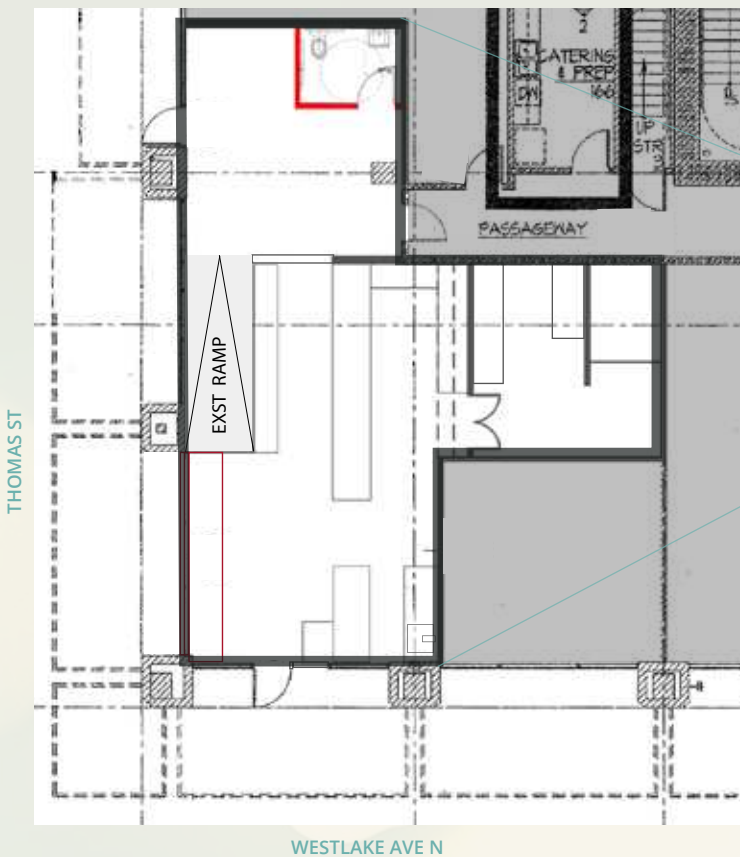
Boutiques & Shops

## CULTURAL CENTERS

- Climate Pledge Arena
- Pacific Science Center
- McCaw Hall
- Cornish Playhouse
- Space Needle
- Chihuly Garden & Glass
- MOHAI
- Center for Wooden Boats
- The Gates Foundation



## 1,300+/- SF AVAILABLE



Elevation view from Thomas St



Elevation view from Westlake Ave

# 307 WESTLAKE

## WCCR

West Coast Commercial Realty

### LEASING INFORMATION

Tiffini Connell | [tiffini@wccommercialrealty.com](mailto:tiffini@wccommercialrealty.com)

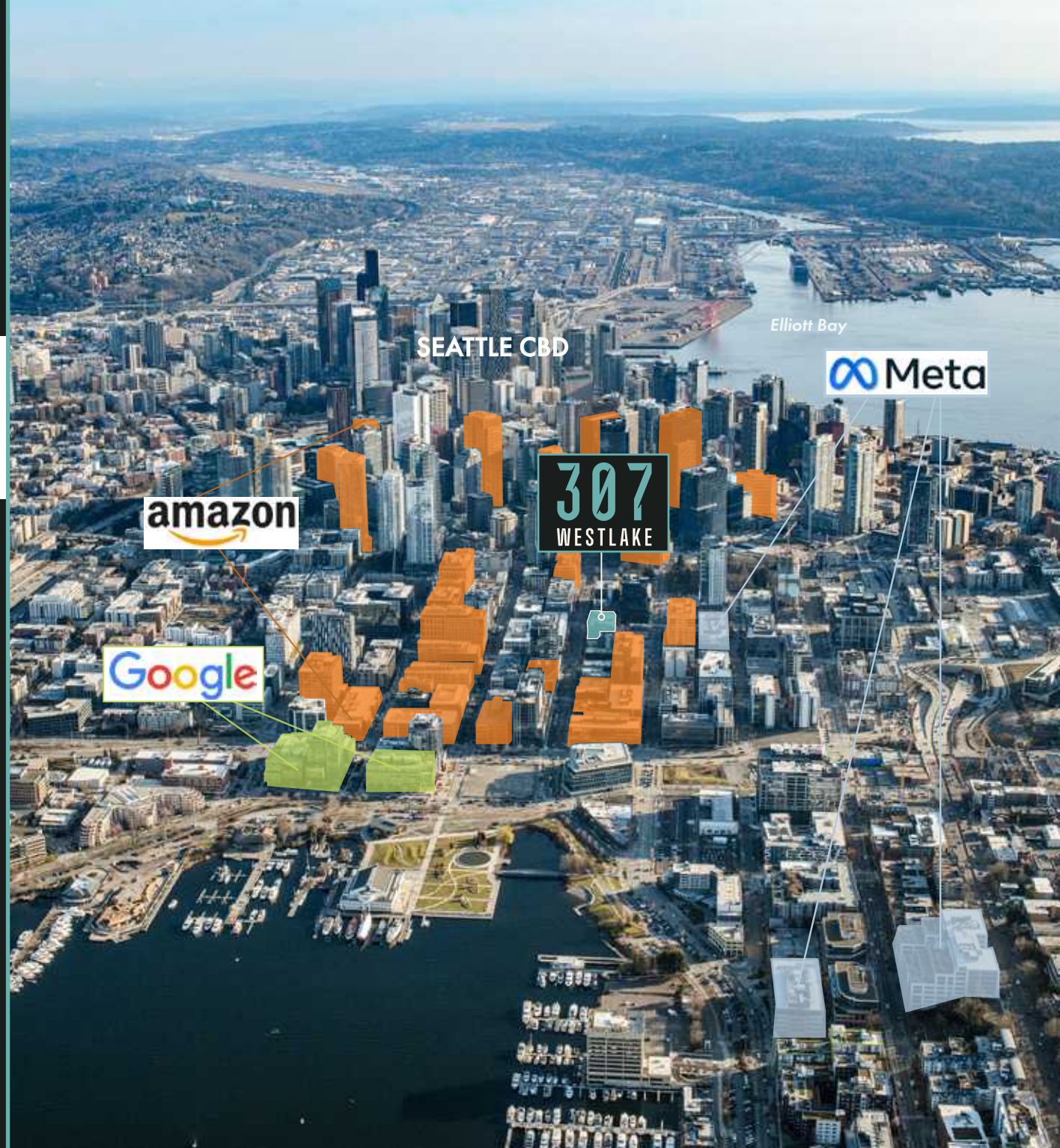
Avery Connell | [avery@wccommercialrealty.com](mailto:avery@wccommercialrealty.com)

Kara Farley | [karaf@wccommercialrealty.com](mailto:karaf@wccommercialrealty.com)

# (206) 283-5212

[www.wccommercialrealty.com](http://www.wccommercialrealty.com)

A  BioMed Realty property



DISCLAIMER: The above information has been secured from sources believed to be reliable, however, no representations are made to its accuracy. Prospective tenants or buyers should consult their professional advisors and conduct their own independent investigation. Site plan and configuration are subject to change. Properties are subject to change in price and/or availability without notice. West Coast Commercial Realty, LLC