

HILLTOP OFFICE PARK BUILDING 1

FOR LEASE

Prime office space near
downtown Bellevue



AVAILABLE

12310

12310 NE 8TH ST | BELLEVUE, WA

km Kidder
Mathews

LEASE AVAILABILITY

Suite 203 - 838 SF

Desirable location, near numerous amenities and Bellevue CBD

Close proximity to East Link Light Rail extension, opening in 2024

HVAC units installed in 2016

Abundant parking available (36 stalls), Ratio 4.7/1,000 SF

Easy access to I-405 and SR-520

Call for Rates

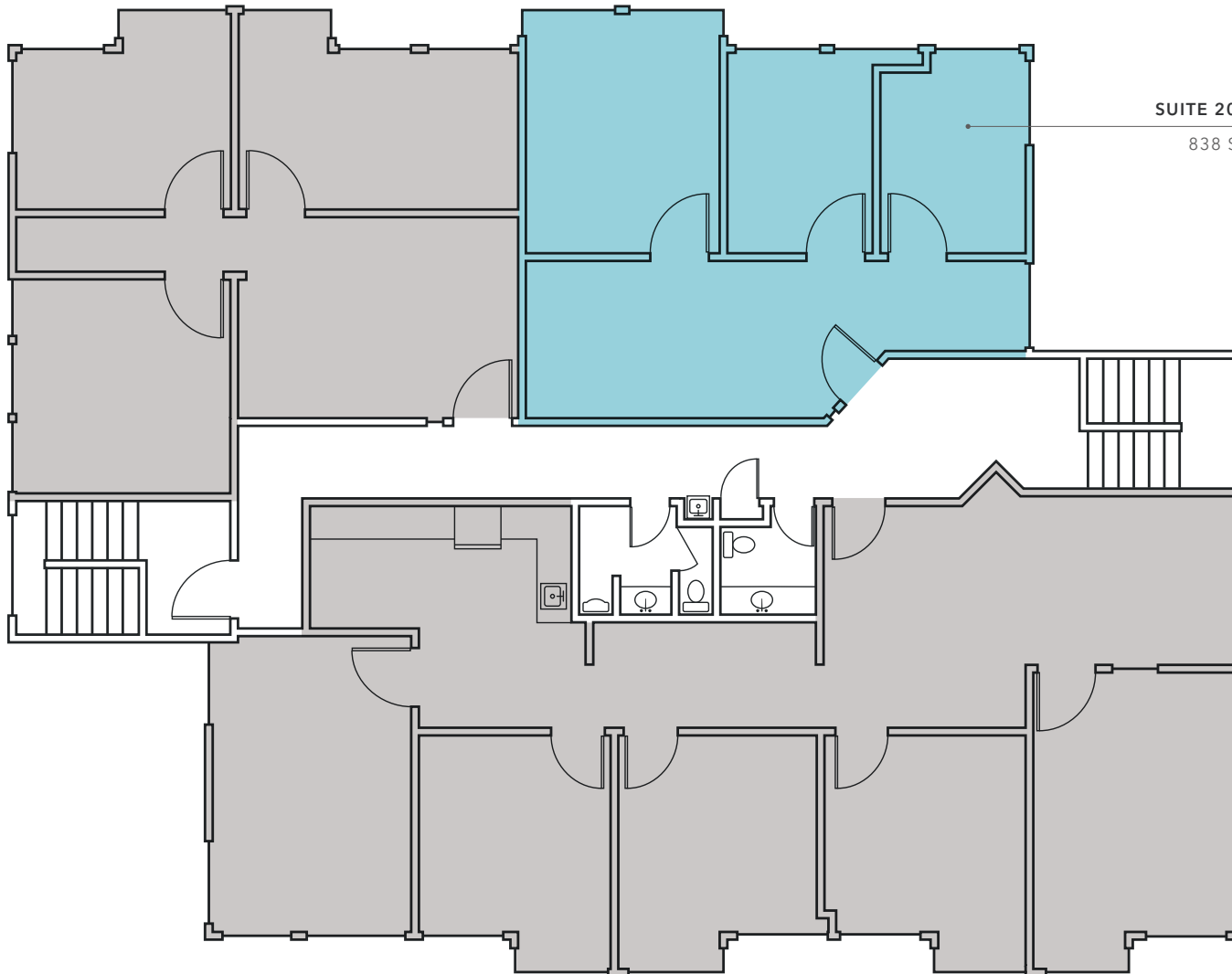
AARON KRAFT

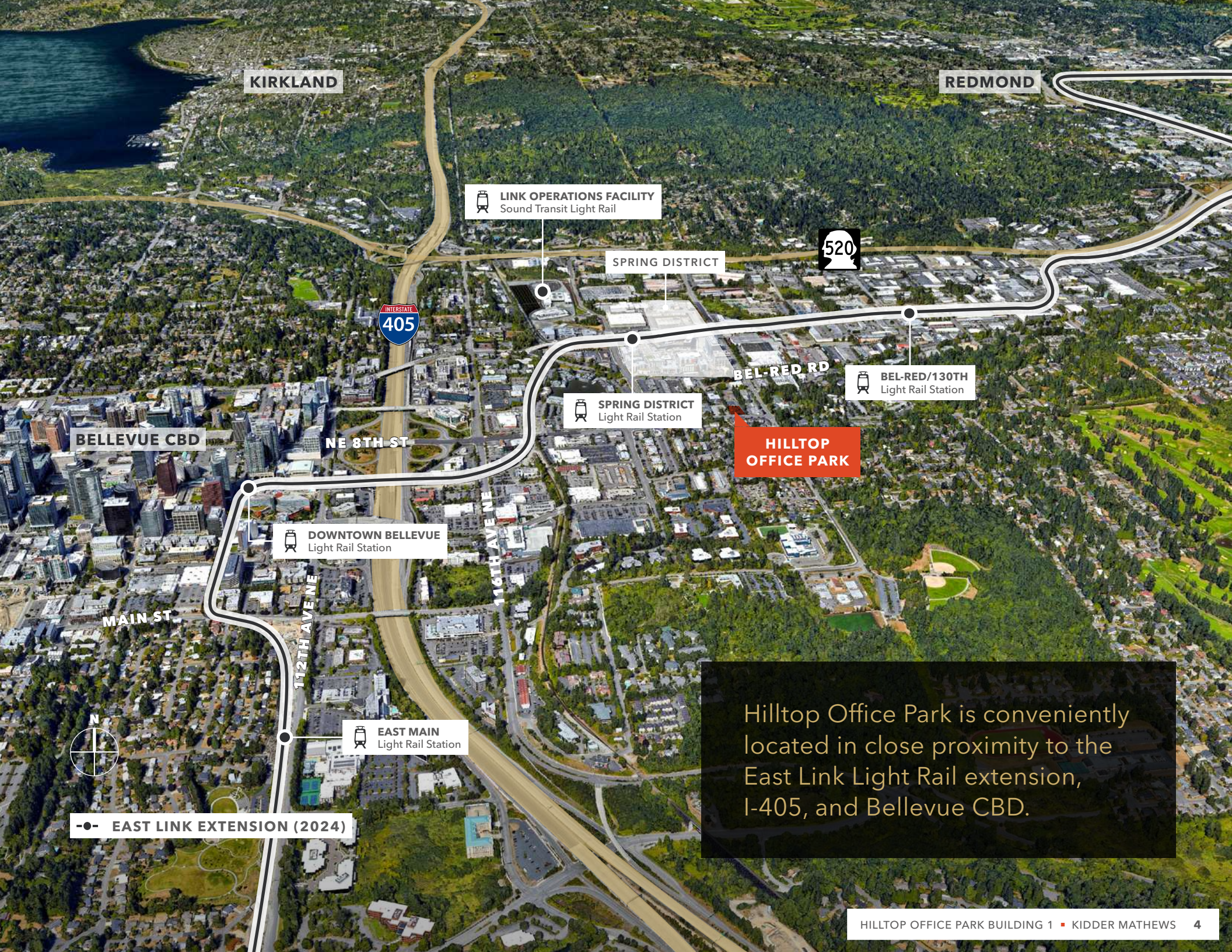
425.450.1105

aaron.kraft@kidder.com



SECOND FLOOR PLAN





KIRKLAND


REDMOND

 **LINK OPERATIONS FACILITY**
Sound Transit Light Rail

SPRING DISTRICT

520

INTERSTATE
405

 **SPRING DISTRICT**
Light Rail Station

 **BEL-RED/130TH**
Light Rail Station

BEL-RED RD

**HILLTOP
OFFICE PARK**

BELLEVUE CBD

NE 8TH ST

 **DOWNTOWN BELLEVUE**
Light Rail Station

MAIN ST

112TH AVE NE

116TH AVE NE

 **EAST MAIN**
Light Rail Station

 **EAST LINK EXTENSION (2024)**

Hilltop Office Park is conveniently located in close proximity to the East Link Light Rail extension, I-405, and Bellevue CBD.





EXCLUSIVELY
REPRESENTED BY

AARON KRAFT
425.450.1105
aaron.kraft@kidder.com

 **Kidder
Mathews**