

# Industrial for Sublease LAKEWOOD CONTRACTOR YARD

9605 32nd Avenue Ct S, Lakewood, WA 98499



## SUBLEASE - SUITE A

<b>SHOP &amp; OFFICE:</b>	±960 SF
<b>YARD:</b>	±0.52 Acres, Fenced & Graveled
<b>LOADING:</b>	2 Grade Level Doors
<b>MOVE IN:</b>	Available Now
<b>SUBLEASE EXPIRATION:</b>	October 31, 2026, longer term available
<b>ZONING:</b>	AC1 (Air Corridor)
<b>RATES:</b>	Contact Broker

## COMMENTS

A half-acre yard with a 960 SF shop and office, which includes two grade level doors. The yard is fenced and gravelled. Ideal for contractor yard users who need warehouse space with a yard for outside storage.

Additional space available for a total of 1,920 SF of shop/office on ~1 acre of fenced yard.

Located directly off the I-5 and SR-512 interchange, on 96th St S in Lakewood.



## CONTACT

**Andrew Hull**

ahull@lee-associates.com

D 253.444.3023

**Zane Shiras, SIOR, CCIM**

zshiras@lee-associates.com

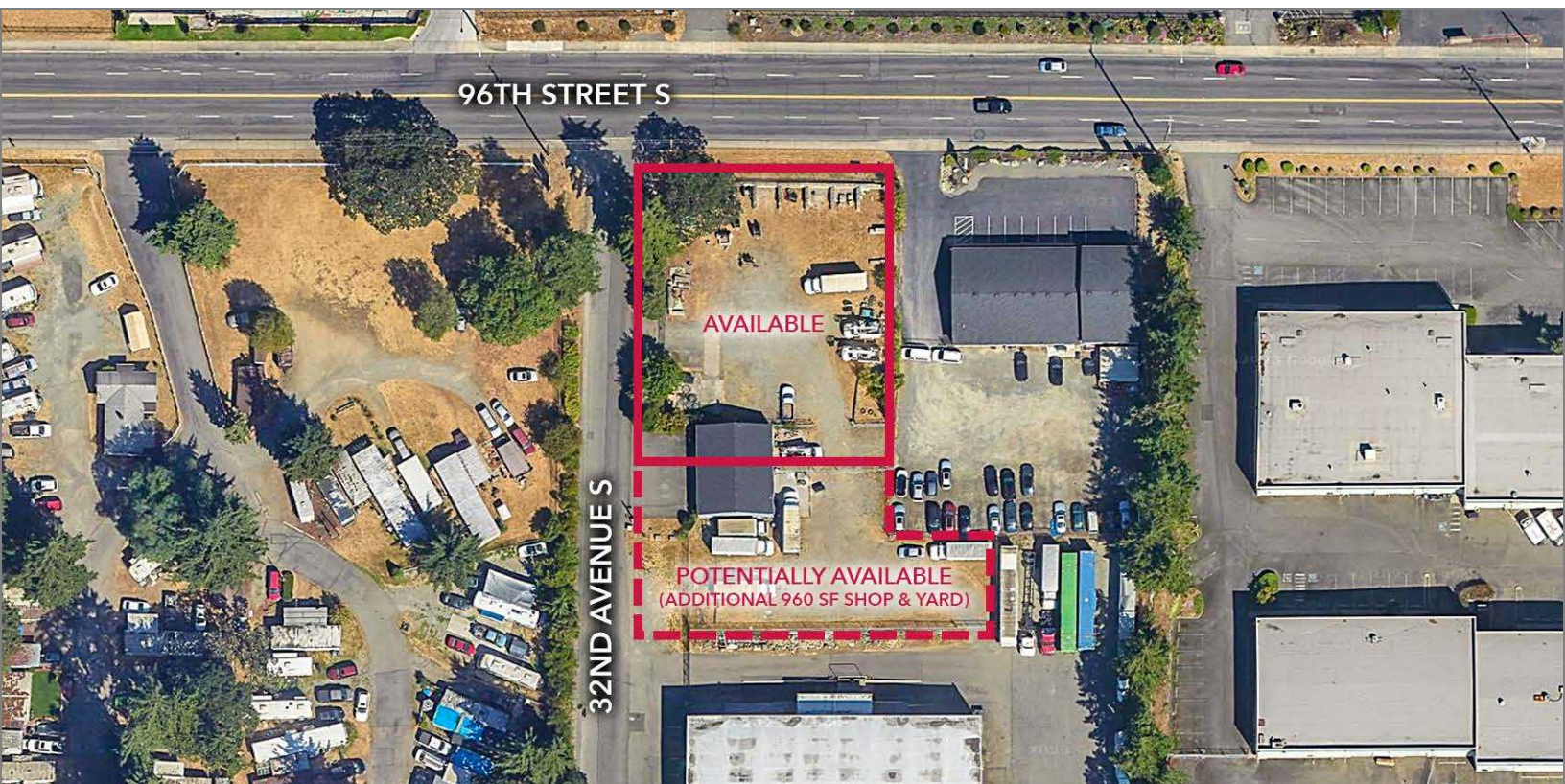
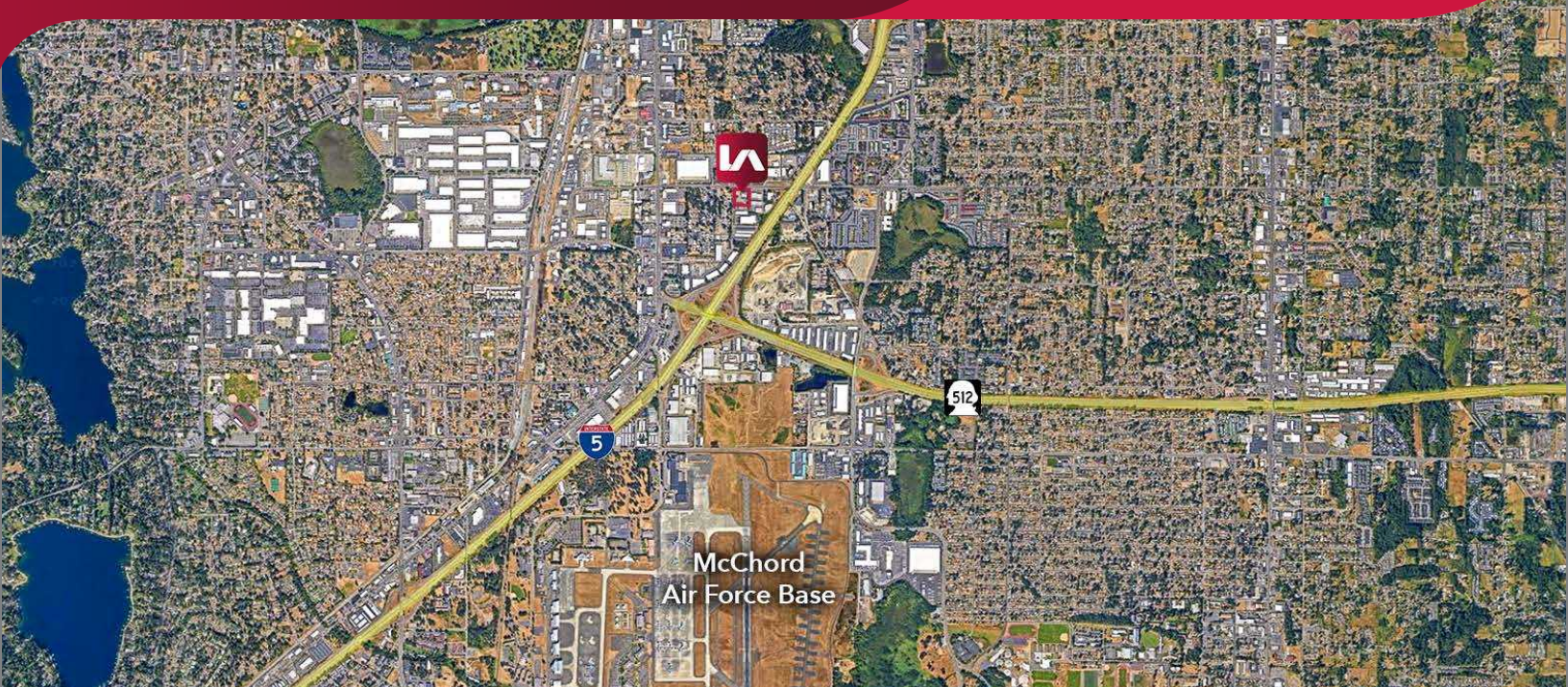
D 206.773.2676

We obtained the information above from sources we believe to be reliable. However, we have not verified its accuracy and make no guarantee, warranty or representation about it. It is submitted subject to the possibility of errors, omissions, change of price, rental or other conditions, prior sale, lease or financing, or withdrawal without notice. We include projections, opinions, assumptions or estimates for example only, and they may not represent current or future performance of the property. You and your tax and legal advisors should conduct your own investigation of the property and transaction.

# Industrial for Sublease LAKEWOOD CONTRACTOR YARD

9605 32nd Avenue Ct S, Lakewood, WA 98499

**LEE & ASSOCIATES**  
COMMERCIAL REAL ESTATE SERVICES



## CONTACT

**Andrew Hull**

ahull@lee-associates.com

D 253.444.3023

**Zane Shiras, SIOR, CCIM**

zshiras@lee-associates.com

D 206.773.2676

We obtained the information above from sources we believe to be reliable. However, we have not verified its accuracy and make no guarantee, warranty or representation about it. It is submitted subject to the possibility of errors, omissions, change of price, rental or other conditions, prior sale, lease or financing, or withdrawal without notice. We include projections, opinions, assumptions or estimates for example only, and they may not represent current or future performance of the property. You and your tax and legal advisors should conduct your own investigation of the property and transaction.