

FOR LEASE

PERCIVAL PLAZA

606 COLUMBIA ST NW, OLYMPIA, WA

WEST
BAY

THE OLYMPIA
FARMERS MARKET

SUBJECT
PROPERTY

Olympia Office Suites

1,089 - 4,699 SF Available

Rate \$18.00 - \$20.00 PSF, NNN

Tl allowance available

Ample on-site parking

Great walking score

Close to amenities

SUITE AVAILABILITY

Bldg	Suite	Office SF
606 COLUMBIA ST NW	301	4,699
626 COLUMBIA ST NW	2D	1,084

EVAN PARKER
360.705.0174
evan.parker@kidder.com

KIDDER.COM

This information supplied herein is from sources we deem reliable. It is provided without any representation, warranty, or guarantee, expressed or implied as to its accuracy. Prospective Buyer or Tenant should conduct an independent investigation and verification of all matters deemed to be material, including, but not limited to, statements of income and expenses. Consult your attorney, accountant, or other professional advisor.

 **Kidder
Mathews**



SUITE 301
4,699 SF

FLOOR 3

606 COLUMBIA ST NW

\$18 - \$20

PLUS NNN

NOW

AVAILABLE

EVAN PARKER 360.705.0174 | evan.parker@kidder.com

KIDDER.COM

This information supplied herein is from sources we deem reliable. It is provided without any representation, warranty, or guarantee, expressed or implied as to its accuracy. Prospective Buyer or Tenant should conduct an independent investigation and verification of all matters deemed to be material, including, but not limited to, statements of income and expenses. Consult your attorney, accountant, or other professional advisor.



FLOOR 2

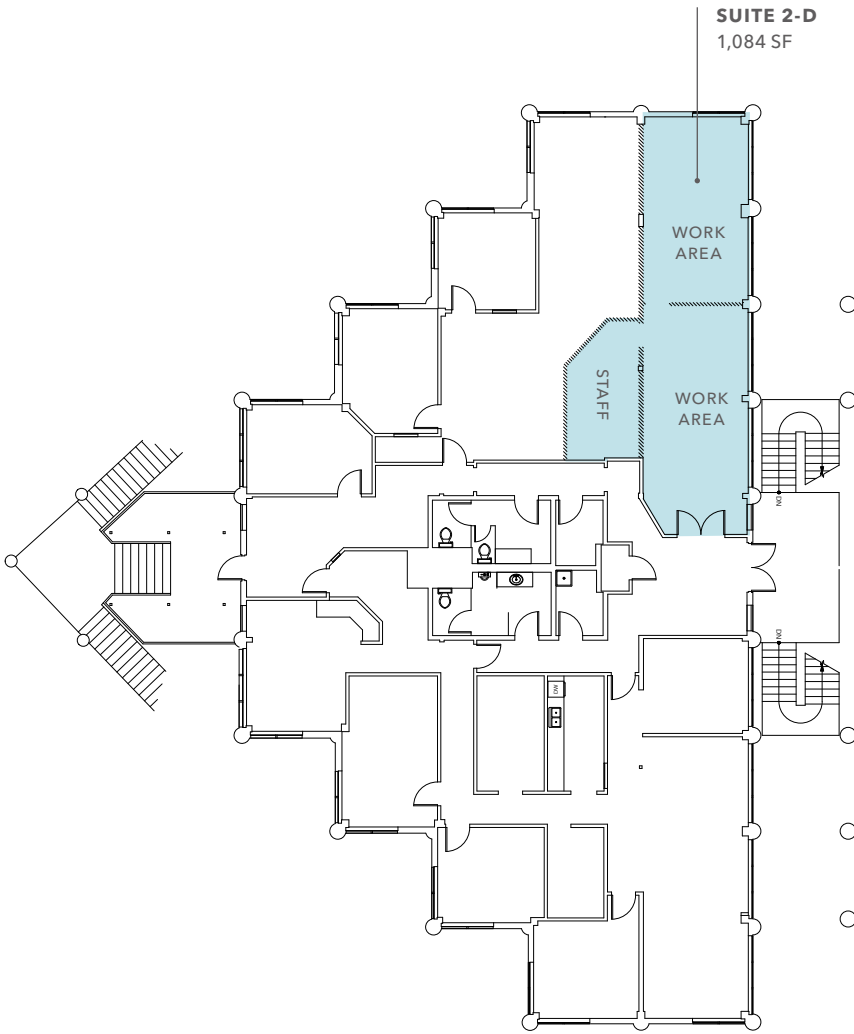
626 COLUMBIA ST NW

\$18 - \$20

PLUS NNN

NOW

AVAILABLE



EVAN PARKER 360.705.0174 | evan.parker@kidder.com

KIDDER.COM

This information supplied herein is from sources we deem reliable. It is provided without any representation, warranty, or guarantee, expressed or implied as to its accuracy. Prospective Buyer or Tenant should conduct an independent investigation and verification of all matters deemed to be material, including, but not limited to, statements of income and expenses. Consult your attorney, accountant, or other professional advisor.

