

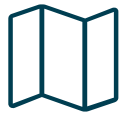


# FOR LEASE: LANDBUILD BUILDING

6101 23rd Drive West, Everett, WA



**Class A Industrial**



**Close to Boeing in the heart  
of Seaway Center area**



**High Image Building**



**24' Clear height**



**480v 3 phase power**



**On-site management**



### Suite B

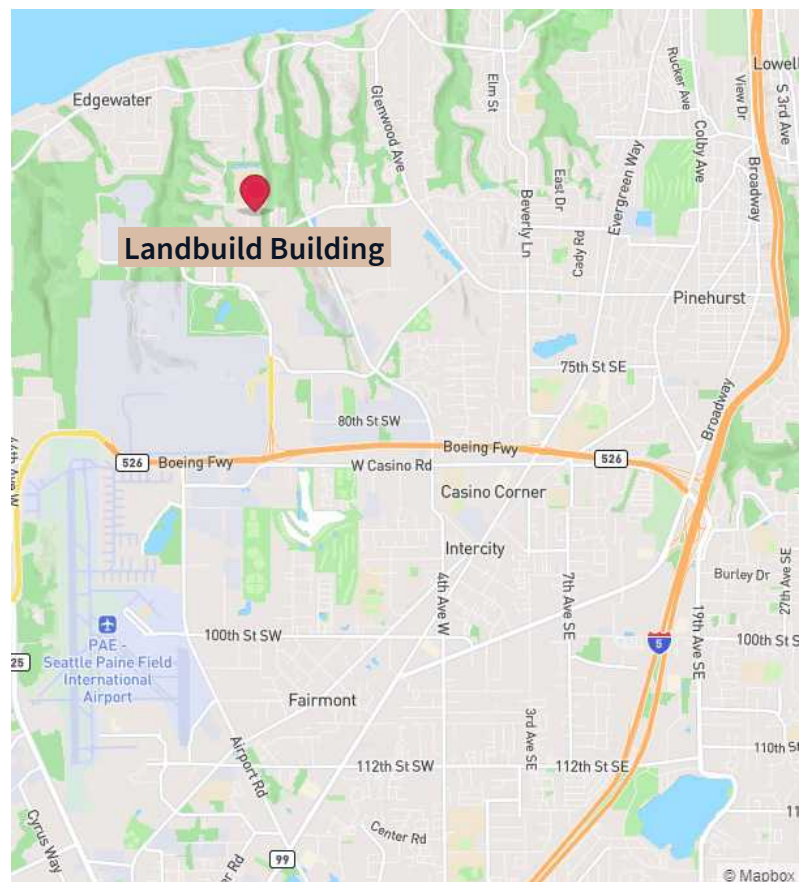
- 11,770 SF Total: 10,326 SF warehouse and 1,444 SF office
- 3 Dock High Doors and 1 Grade Level Ramp
- Available Now

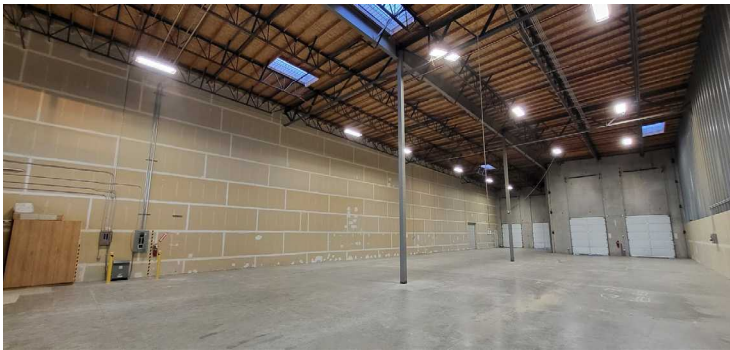
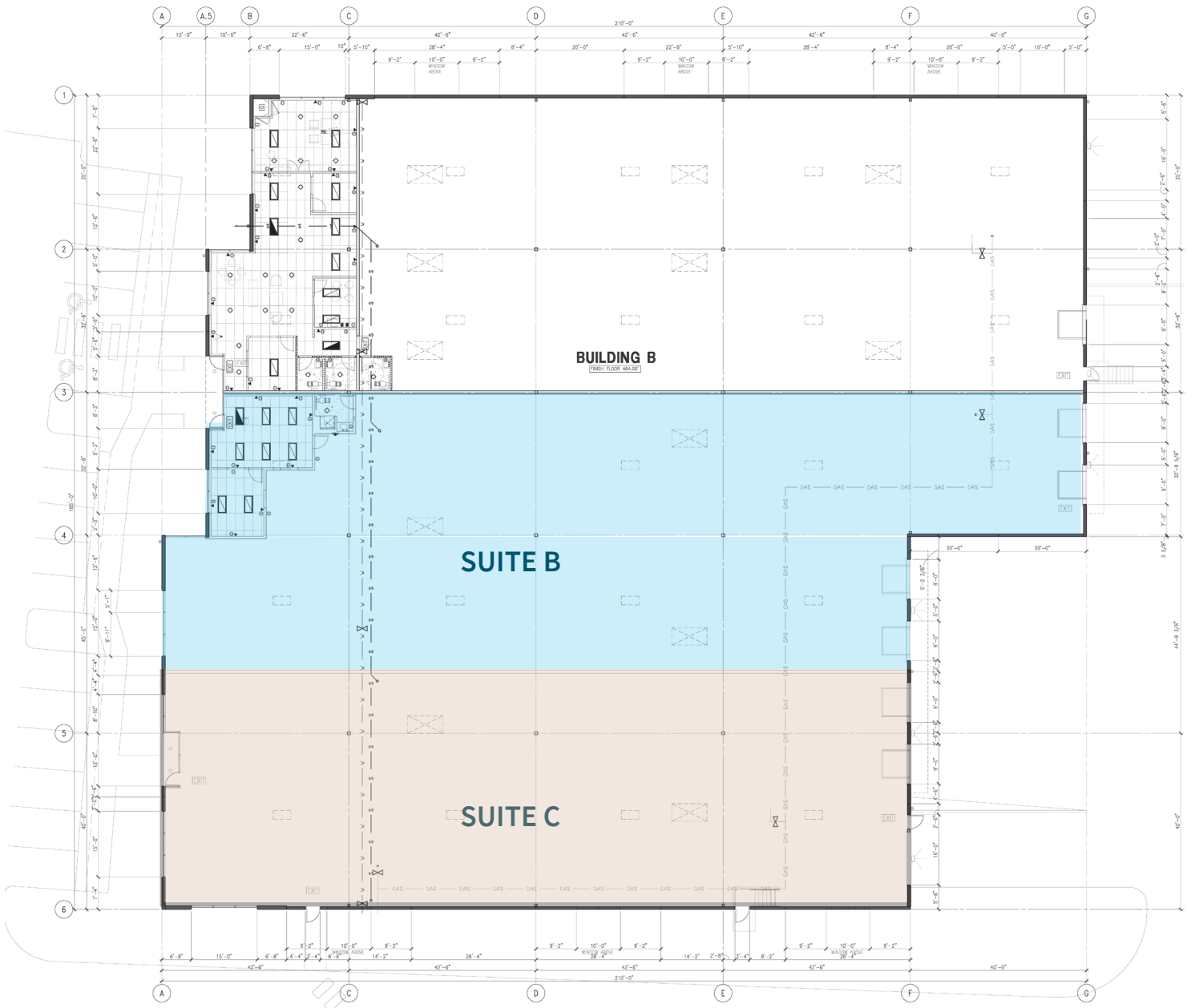
### Suite C

- 9,180 SF Total: 9,030 SF warehouse and 150 SF office
- 2 Dock High Doors and 1 Grade Level Ramp
- End cap space
- Available Now

### Suite B + C

- 20,950 Total Combined SF
- 19,356 Warehouse SF
- 1,594 Office SF
- 5 Dock High Doors
- 2 Grade Level Ramps

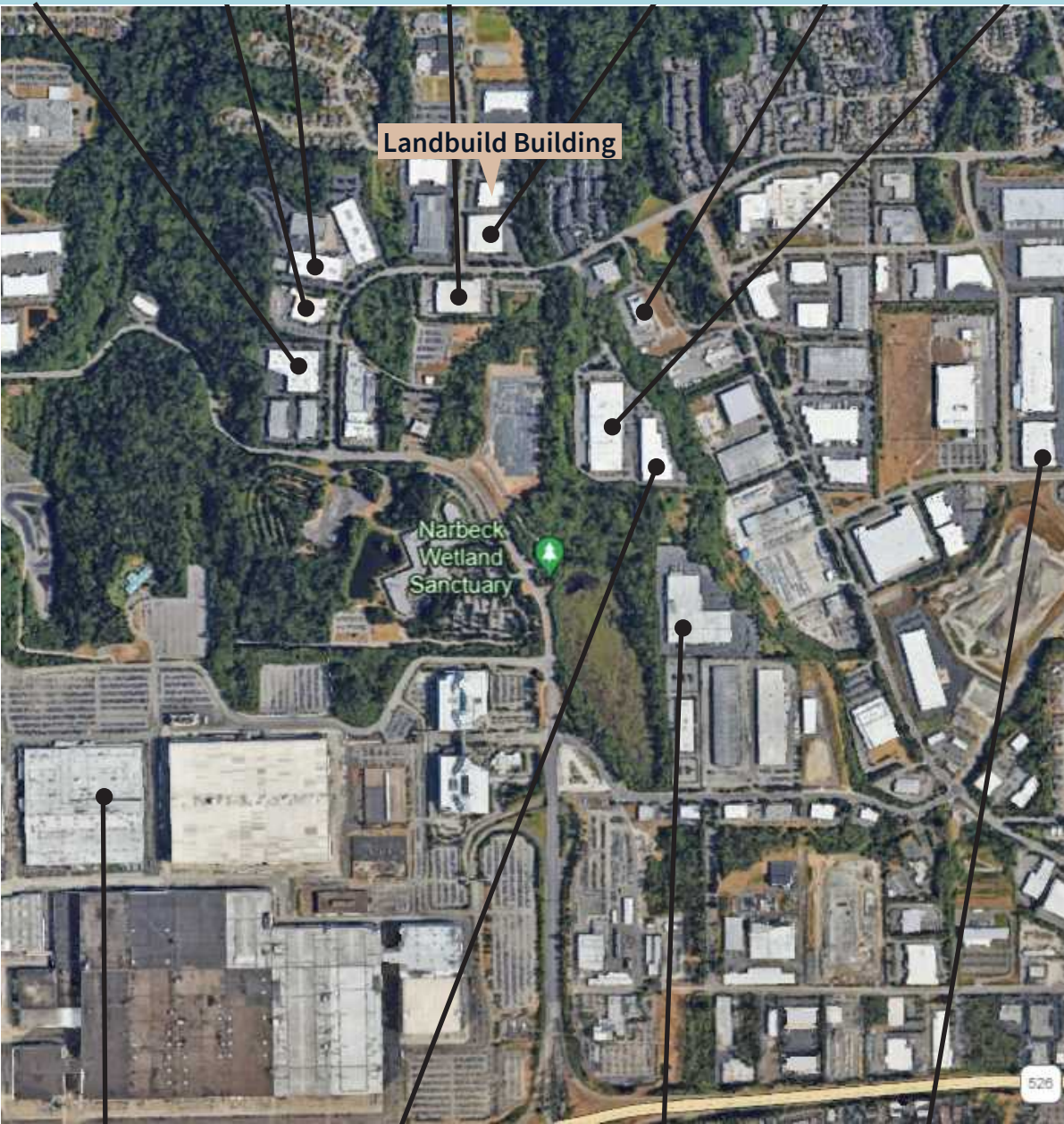






Landbuild Building

Narbeck Wetland Sanctuary



University Mechanical & Engineering Contractors  
An EMCOR Company



**Gabe Smith**

[gabe.smith@jll.com](mailto:gabe.smith@jll.com)

+1 206 450 0898

**Brent Jackson**

[brent.jackson@jll.com](mailto:brent.jackson@jll.com)

+1 425 449 2715

**McKenna Hartman**

[mckenna.hartman@jll.com](mailto:mckenna.hartman@jll.com)

+1 206 245 0708

**Alec Goodwin**

[alec.goodwin@jll.com](mailto:alec.goodwin@jll.com)

+1 424 421 9245