

2200 First Avenue S

2200 First Avenue S
Seattle, WA 98134

Suite 200: 10,000 - 27,149 RSF | Sublease term through September 30, 2025



2200 First Avenue

2200 First Avenue S | Seattle, WA



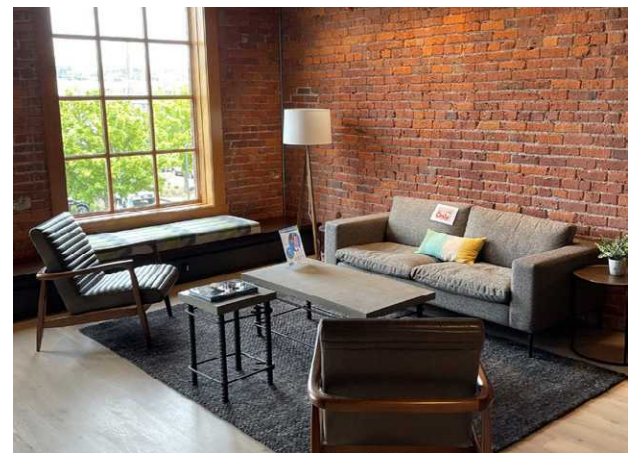
LIVING WALL

Building Highlights

- + High ceilings and large windows allow for plentiful natural light
- + Beautiful high-end buildout and exposed bricks and beams
- + Plug and play with furniture in place
- + Private basketball court
- + Parking available



LOUNGE



WAITING AREA

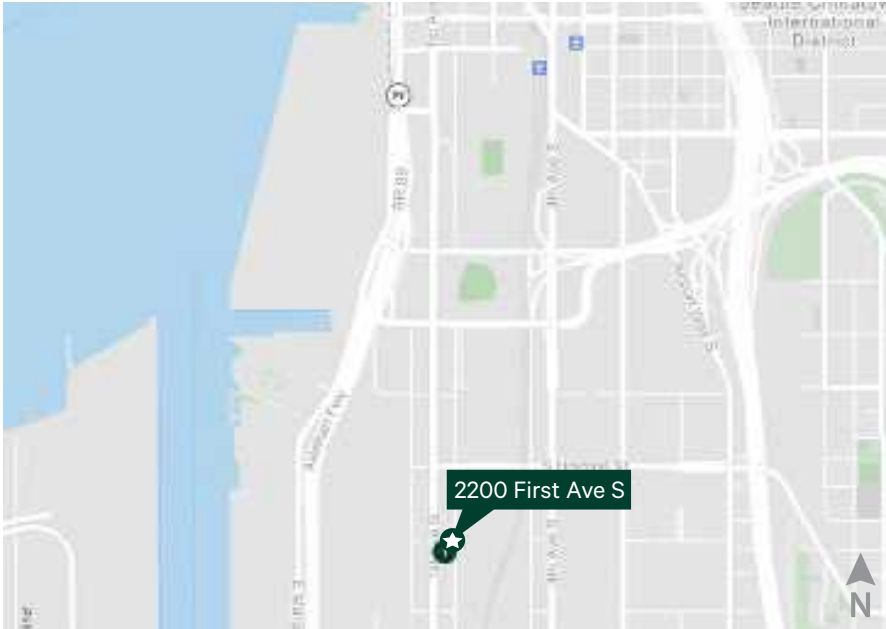
2200 First Avenue

2200 First Avenue S | Seattle, WA

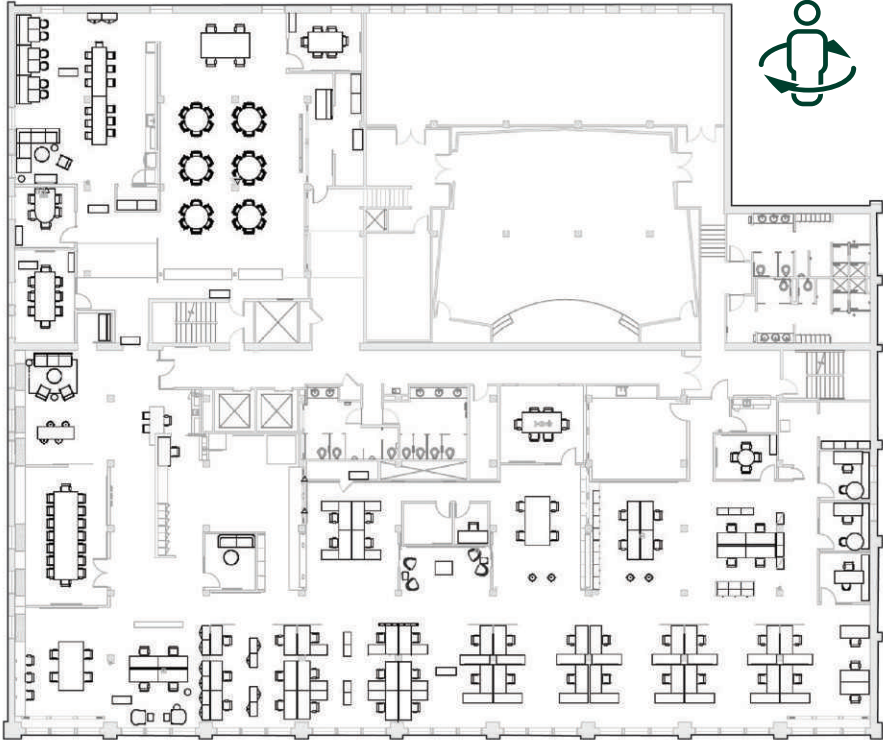
For Sublease

Location Highlights

- + Close proximity to the CBD, with easy access to Hwy 99, I-5, and I-90
- + Walk to Starbucks, Macrina Bakery, Jimmy Johns and Krispy Kreme
- + Near train station, Metro, and Light Rail
- + Close to Stadium activity: T-Mobile Park and Lumen Field



Floor Plan



2200 First Avenue

2200 First Avenue S | Seattle, WA 98134

For Sublease



OPEN OFFICE



AUDITORIUM



CONFERENCE ROOM



BASKETBALL COURT

Contact Us

Joe Riley

First Vice President
+1 206 292 6015
joe.riley1@cbre.com

Tony Ford

Senior Vice President
+1 206 292 6014
tony.ford@cbre.com

CBRE, Inc.

1420 Fifth Avenue
Suite 3800
Seattle, WA 98101

© 2022 CBRE, Inc. All rights reserved. This information has been obtained from sources believed reliable, but has not been verified for accuracy or completeness. You should conduct a careful, independent investigation of the property and verify all information. Any reliance on this information is solely at your own risk. CBRE and the CBRE logo are service marks of CBRE, Inc. All other marks displayed on this document are the property of their respective owners, and the use of such logos does not imply any affiliation with or endorsement of CBRE. Photos herein are the property of their respective owners. Use of these images without the express written consent of the owner is prohibited.01-5-2024-CH