

Storage Space

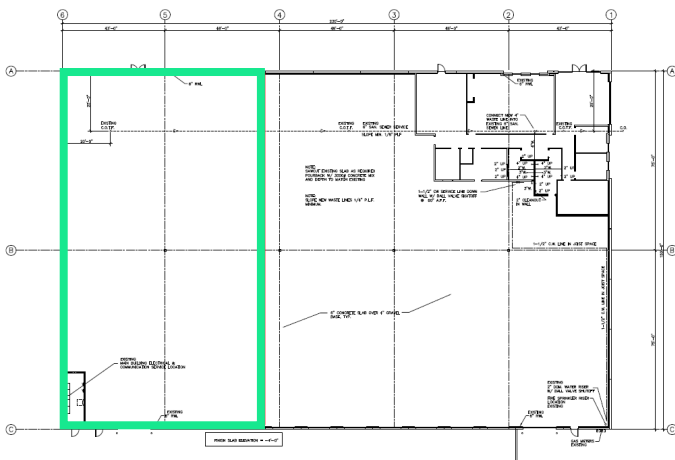
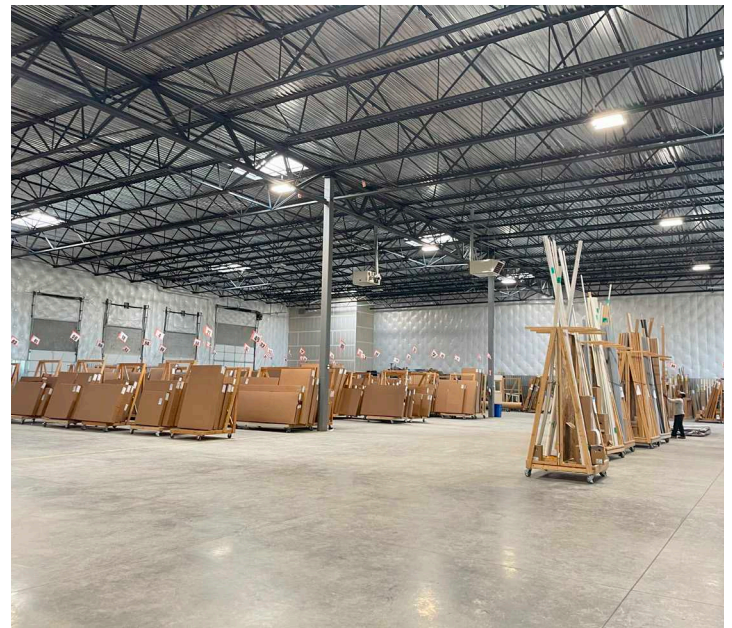
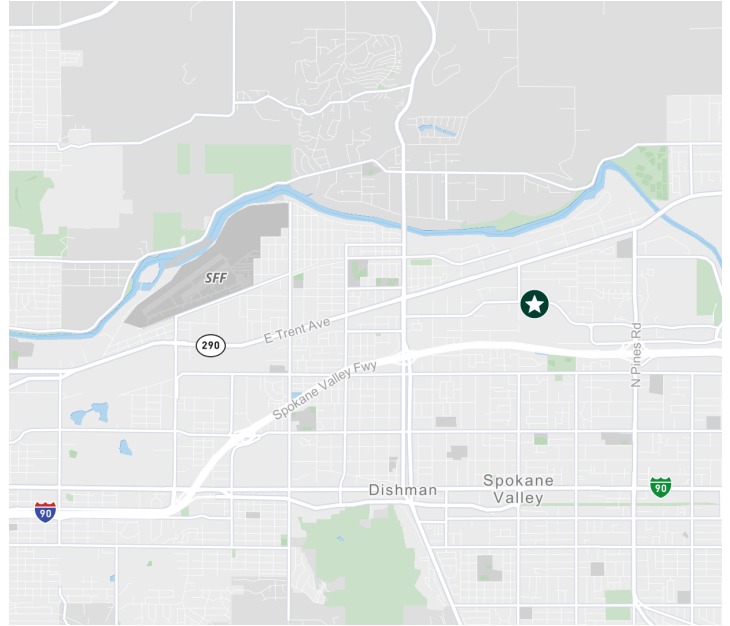
Montgomery Logistics Center, Bldg 2
10914 East Montgomery Drive
Spokane Valley, WA 99206

+/- 12,000 SF available for sublease



Overview

- +/- 12,000 SF
- Storage space with separate entrance; fully enclosed
- Grade Level Doors: 1
- Dock High Doors: 3
- Ceiling Height: 24'
- 15 miles from Spokane International Airport and 10 miles from downtown Spokane
- \$12.00/SF Gross



Contact Us

Jason Rosauer
Executive Vice President
+1 206 292 6169
jason.rosauer@cbre.com

Patricia Loveall, SIOR
Executive Vice President
+1 206 292 6139
patricia.loveall@cbre.com

© 2023 CBRE, Inc. All rights reserved. This information has been obtained from sources believed reliable, but has not been verified for accuracy or completeness. You should conduct a careful, independent investigation of the property and verify all information. Any reliance on this information is solely at your own risk. CBRE and the CBRE logo are service marks of CBRE, Inc. All other marks displayed on this document are the property of their respective owners, and the use of such logos does not imply any affiliation with or endorsement of CBRE. Photos herein are the property of their respective owners. Use of these images without the express written consent of the owner is prohibited. 1.5.24 PN