

For Lease  
**Industrial**

**NAI**Black

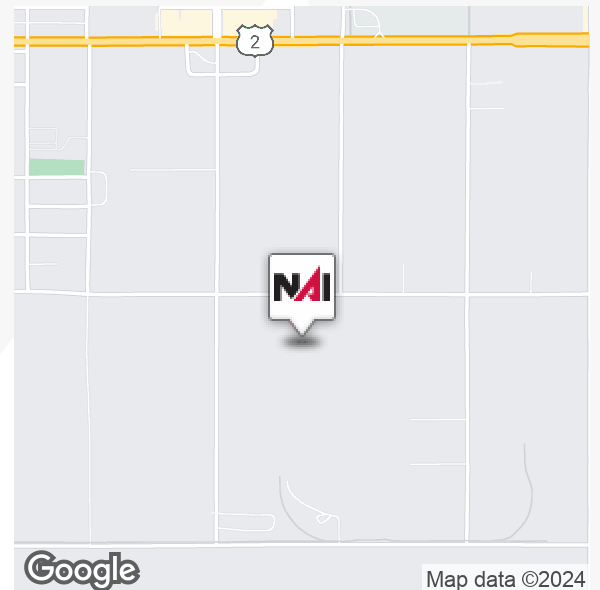


## 11705 W. 21st Ave.

Airway Heights, Washington 99001

### Property Description

- Available Space: 1,500 SF ±
- Year Built: 1992
- Property Type: Industrial Space/Land/Small Warehouse
- Building Class: C
- Fenced Gated, 8+ Acre Yard with One Structure and Multiple Concrete Pads
- Easy Access to Highway 2 and Airway Heights Main Arterials



**Lease Rate: \$3,000.00 per month (MG)**

For more information

**John Powers**

O: 509 622 3563

[jpowers@naiblack.com](mailto:jpowers@naiblack.com)

No warranty or representation, expression or implied, is made as to the accuracy of the information contained herein, and the same is submitted subject to errors, omissions, change or price, rental or other conditions, prior to sale, lease, financing, or withdrawal without notice, and of special listing conditions imposed by our principals no warranties or representations are made as to the condition of the property or any hazards contained therein or any to be implied.

801 W. Riverside Avenue, Suite 300  
Spokane, WA 99201  
509 623 1000 tel  
[naiblack.com](http://naiblack.com)

For Lease  
**Industrial**

**NAI**Black

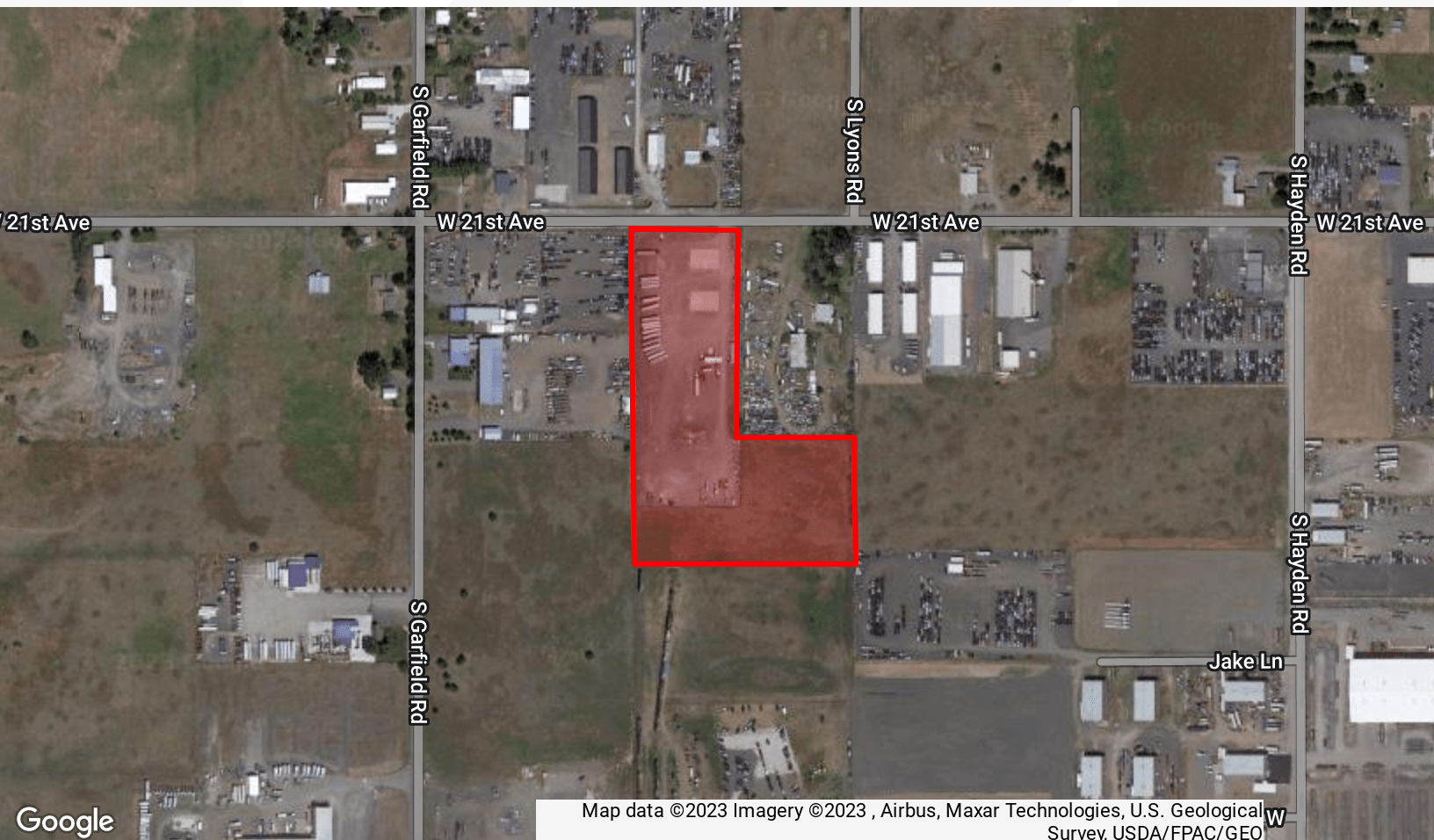


No warranty or representation, expression or implied, is made as to the accuracy of the information contained herein, and the same is submitted subject to errors, omissions, change or price, rental or other conditions, prior to sale, lease, financing, or withdrawal without notice, and of special listing conditions imposed by our principals no warranties or representations are made as to the condition of the property or any hazards contained therein or any to be implied.

801 W. Riverside Avenue, Suite 300  
Spokane, WA 99201  
509 623 1000 tel  
[naiblack.com](http://naiblack.com)

For Lease  
**Industrial**

**NAI**Black



No warranty or representation, expression or implied, is made as to the accuracy of the information contained herein, and the same is submitted subject to errors, omissions, change or price, rental or other conditions, prior to sale, lease, financing, or withdrawal without notice, and of special listing conditions imposed by our principals no warranties or representations are made as to the condition of the property or any hazards contained therein or any to be implied.

801 W. Riverside Avenue, Suite 300  
Spokane, WA 99201  
509 623 1000 tel  
[naiblack.com](http://naiblack.com)