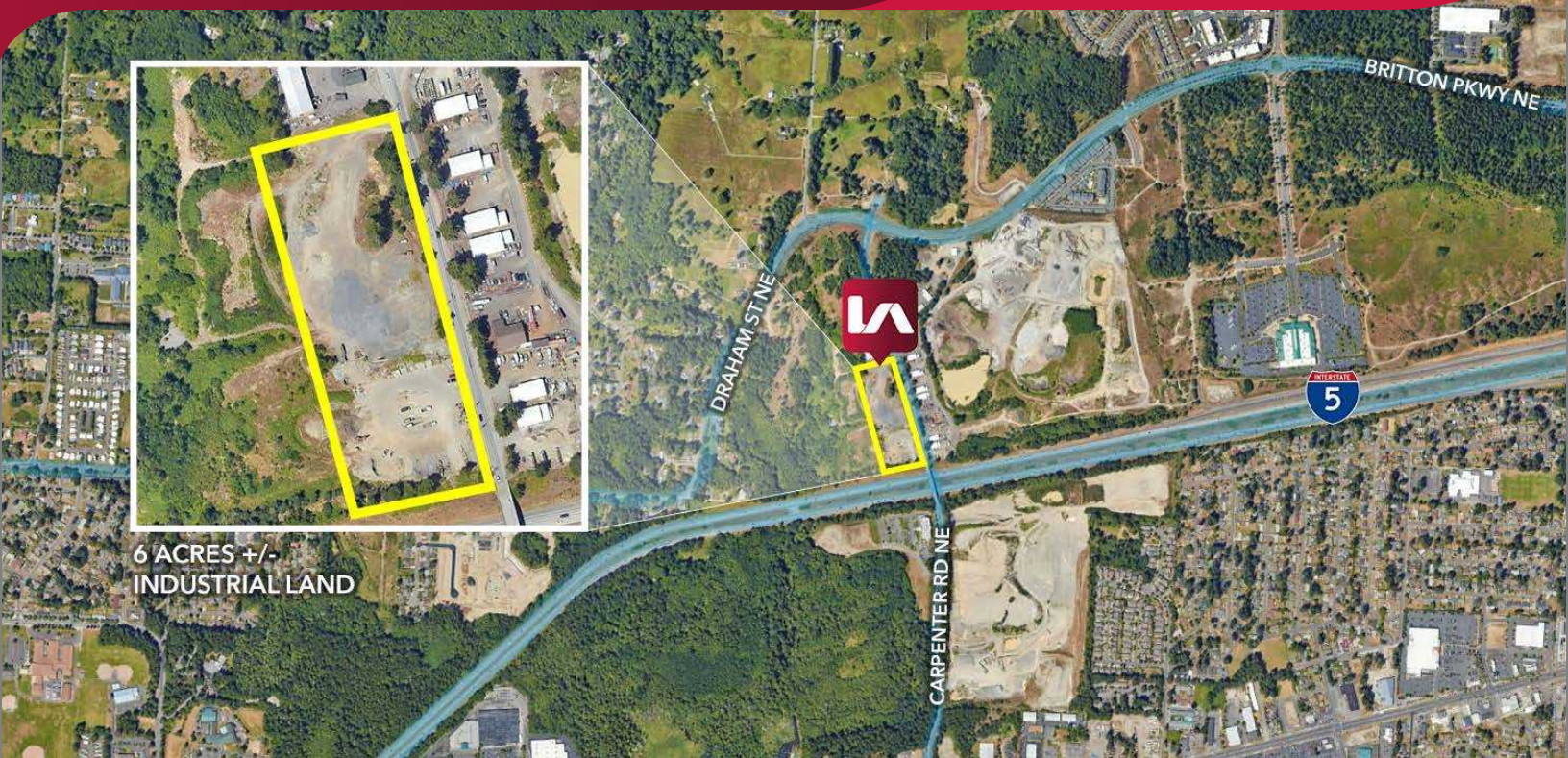


Land for Lease

LACEY INDUSTRIAL YARD

1525 Carpenter Rd NE, Lacey, WA 98516



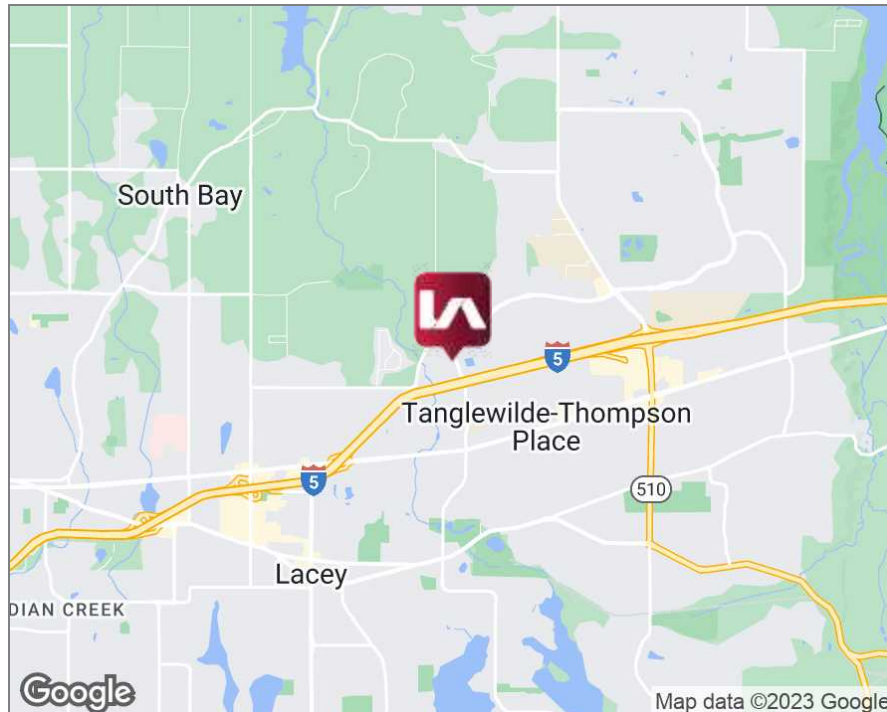
6 ACRES +/-
INDUSTRIAL LAND

LISTING DATA

AVAILABLE SF: 260,000 SF
AVAILABLE AREA: 6 Acres +/-

PROPERTY INFORMATION

- Utilities to site
- Graded and level, ready for occupancy
- Zone Light Industrial, City of Lacey
- Two curb cuts for ingress / egress
- 900+ LF on Carpenter road frontage
- Call Broker for rates



CONTACT

Vanessa Herzog, SIOR, CCIM

vherzog@lee-associates.com

D 253.444.3020

We obtained the information above from sources we believe to be reliable. However, we have not verified its accuracy and make no guarantee, warranty or representation about it. It is submitted subject to the possibility of errors, omissions, change of price, rental or other conditions, prior sale, lease or financing, or withdrawal without notice. We include projections, opinions, assumptions or estimates for example only, and they may not represent current or future performance of the property. You and your tax and legal advisors should conduct your own investigation of the property and transaction.