

SPACE FOR LEASE



OFFICE SPACE AVAILABLE

Suite: 301

Space Size: ±4,580 SF

Lease Rate: \$24.00 PSF / Year, "Full Service"

- Located in close proximity and easy access to I-90/Highway 95
- High profile professional office building
- On-building signage available

Coeur d'Alene Office Building

1233 N Northwood Center Court
Coeur d'Alene, ID 83814



[View
Location](#)



PAT EBERLIN

208.215.1375

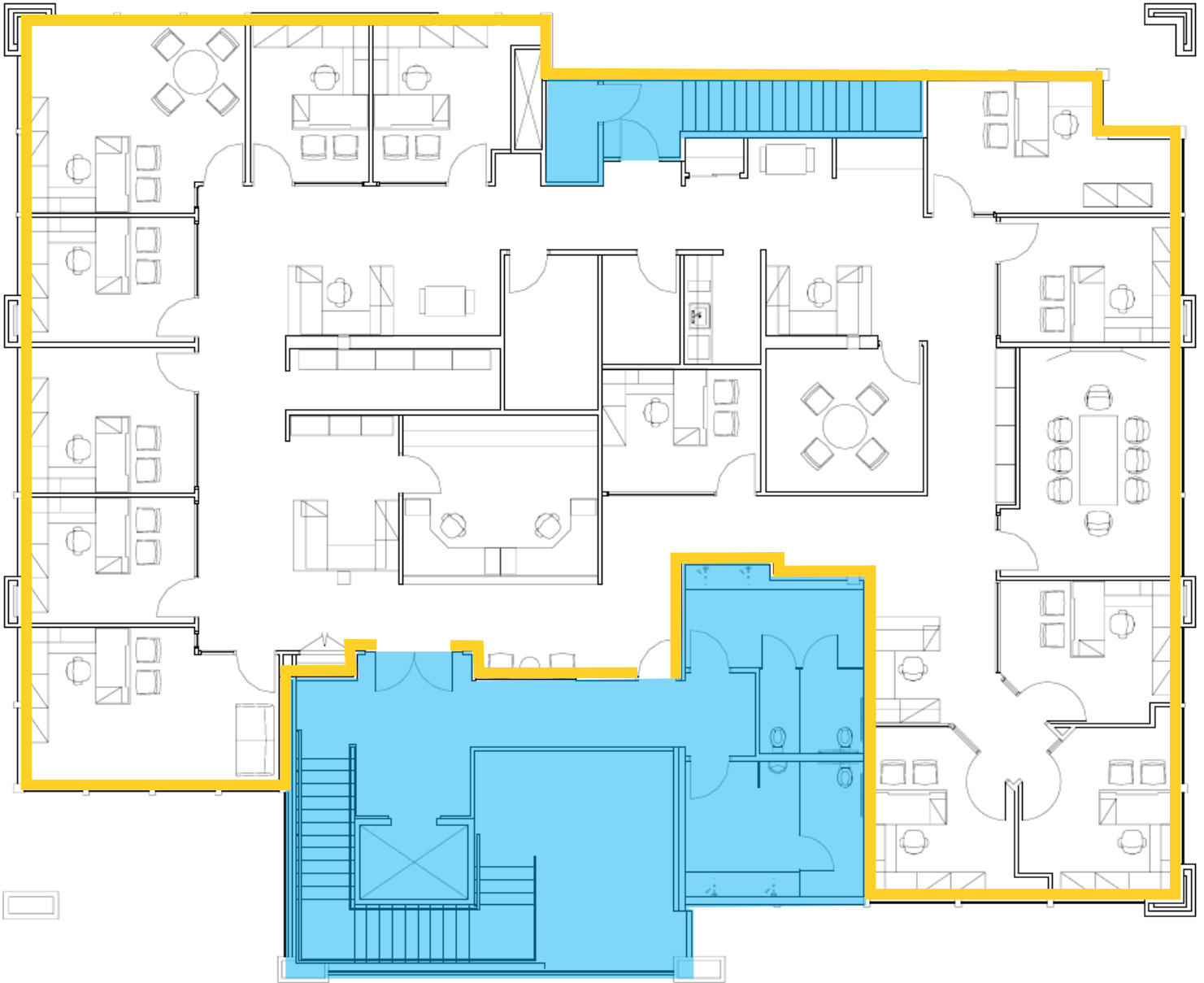
pat.eberlin@kiemlehaood.com

**KIEMLE
HAGOOD**

FLOOR PLAN

1233 N Northwood Center Court | Coeur d'Alene, ID

 Space Available  Common Area

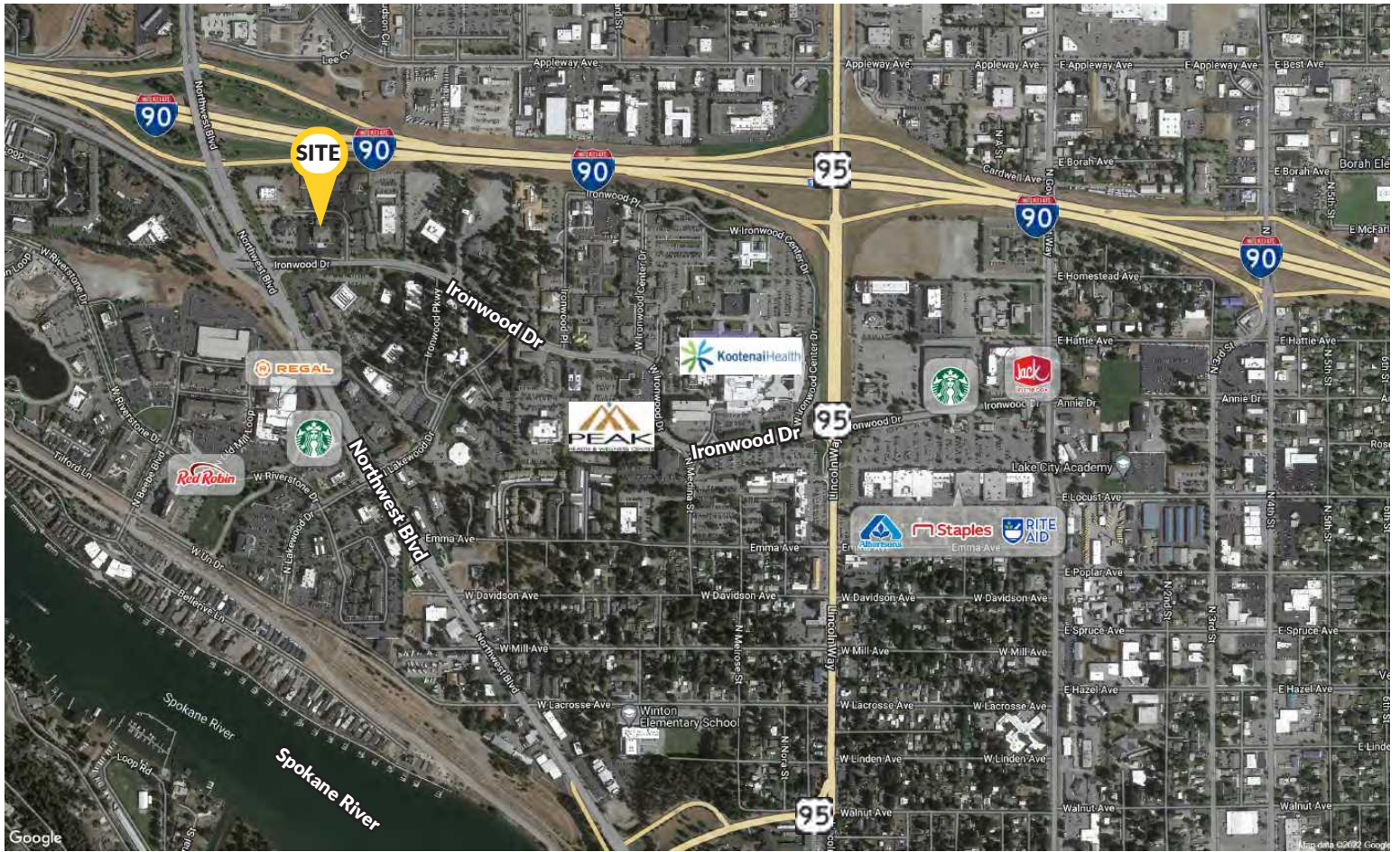


Suite 301

Space Size: ±4,580 SF
Lease Rate: \$24 PSF
Lease Type: Full Service

Space Highlights

- Upper level office space
- Elevator serviced
- Reception
- Kitchenette
- Common area restrooms
- 13 offices
- Conference/meeting room
- Open work area



Coeur d'Alene Office Building

1233 N Northwood Center Court
Coeur d'Alene, ID 83814

PAT EBERLIN
208.215.1375 pat.eberlin@kiemlehagood.com

1579 WEST RIVERSTONE DRIVE, SUITE 102
COEUR D'ALENE, ID 83814



OFFICE LOCATIONS
SPOKANE | COEUR D'ALENE | TRI-CITIES | PALOUSE | MISSOULA

No warranty or representation, expressed or implied, is made by Kiemle Hagood, its agents or its employees as to the accuracy of the information contained herein. All information furnished is from sources deemed reliable and submitted subject to errors, omissions, change of terms and conditions, prior sale, lease or financing, or withdrawal without notice. No one should rely solely on the above information, but instead should conduct their own investigation to independently satisfy themselves.
Kiemle Hagood respects the intellectual property of others:
If you believe the copyright in your work has been violated through this Website, please contact our office for notice of claims of copyright infringement. For your complaint to be valid under the Digital Millennium Copyright Act of 1998 (DMCA), you must provide the following information when providing notice of the claimed copyright infringement: Identify the material on the Website that you believe infringes your work, with enough detail so that we may locate it on the Website; provide your address, telephone number and email address; provide a statement that you have a good faith belief that the disputed use is not authorized by the copyright owner, its agent, or the law; provide a statement that the information in the notification is accurate, and under penalty of perjury, that the complaining party is authorized to act on behalf of the owner of an exclusive right that is allegedly infringed; and provide your physical or electronic signature. Upon receiving your complaint, Kiemle Hagood will, upon review, remove content that you believe infringes your copyright if the complaint is found to be valid.

