

# Dental Office Condominium for Sale or Lease

## MERIDIAN DENTAL BUILDING

3628 Meridian Street, Suite 2A, Bellingham, WA 98225



**ADJUSTED MARKET PRICE: \$625,000**

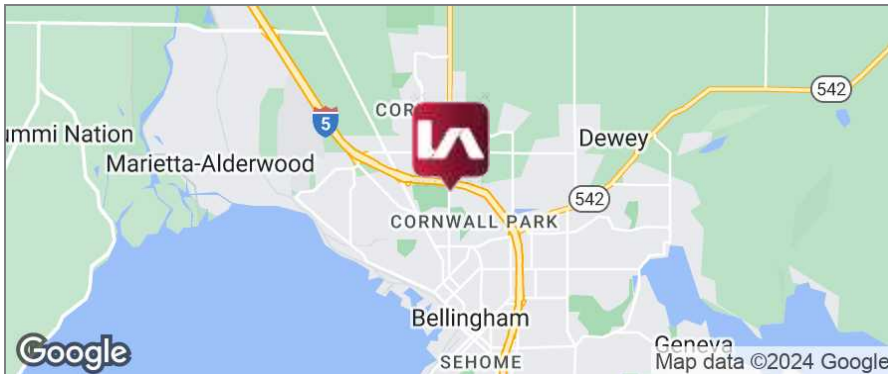
### LISTING DATA

**AVAILABLE SF:** 1,736 SF  
**SALE PRICE:** \$625,000

### COMMENTS

Bellingham's best known dental building, this opportunity is for a dental practice positioned as a start-up, additional office location, relocation, or for an established practice considering a new office. The subject property is designed as a completed dental office with six operatories, reception, waiting area, office and staff lounge, sterilization. The condominium includes a shared mechanical room, ADA bathrooms, x-ray, and monument signage. The property offers an abundance of parking, nicely landscaped atrium and waiting area. This property is well maintained and secured.

Located just off of 1-5 on the Major arterial of Meridian Avenue. This location is well known with a long history of successful business practices.



### DEMOGRAPHICS

	0.25 MILES	0.5 MILES	1 MILE
Total Households	301	1,191	4,561
Total Population	533	2,313	9,494
Average HH Income	\$41,915	\$48,957	\$58,762

### CONTACT

**Jeff Tillman**

[jtillman@lee-associates.com](mailto:jtillman@lee-associates.com)

D 206.219.1286

We obtained the information above from sources we believe to be reliable. However, we have not verified its accuracy and make no guarantee, warranty or representation about it. It is submitted subject to the possibility of errors, omissions, change of price, rental or other conditions, prior sale, lease or financing, or withdrawal without notice. We include projections, opinions, assumptions or estimates for example only, and they may not represent current or future performance of the property. You and your tax and legal advisors should conduct your own investigation of the property and transaction.



# Dental Office Condominium for Sale or Lease

## MERIDIAN DENTAL BUILDING

3628 Meridian Street, Suite 2A, Bellingham, WA 98225

**LEE & ASSOCIATES**  
COMMERCIAL REAL ESTATE SERVICES



### CONTACT

**Jeff Tillman**

[jtillman@lee-associates.com](mailto:jtillman@lee-associates.com)

D 206.219.1286

We obtained the information above from sources we believe to be reliable. However, we have not verified its accuracy and make no guarantee, warranty or representation about it. It is submitted subject to the possibility of errors, omissions, change of price, rental or other conditions, prior sale, lease or financing, or withdrawal without notice. We include projections, opinions, assumptions or estimates for example only, and they may not represent current or future performance of the property. You and your tax and legal advisors should conduct your own investigation of the property and transaction.



# Dental Office Condominium for Sale or Lease

## MERIDIAN DENTAL BUILDING

3628 Meridian Street, Suite 2A, Bellingham, WA 98225

**LEE & ASSOCIATES**  
COMMERCIAL REAL ESTATE SERVICES



### CONTACT

**Jeff Tillman**

[jtillman@lee-associates.com](mailto:jtillman@lee-associates.com)

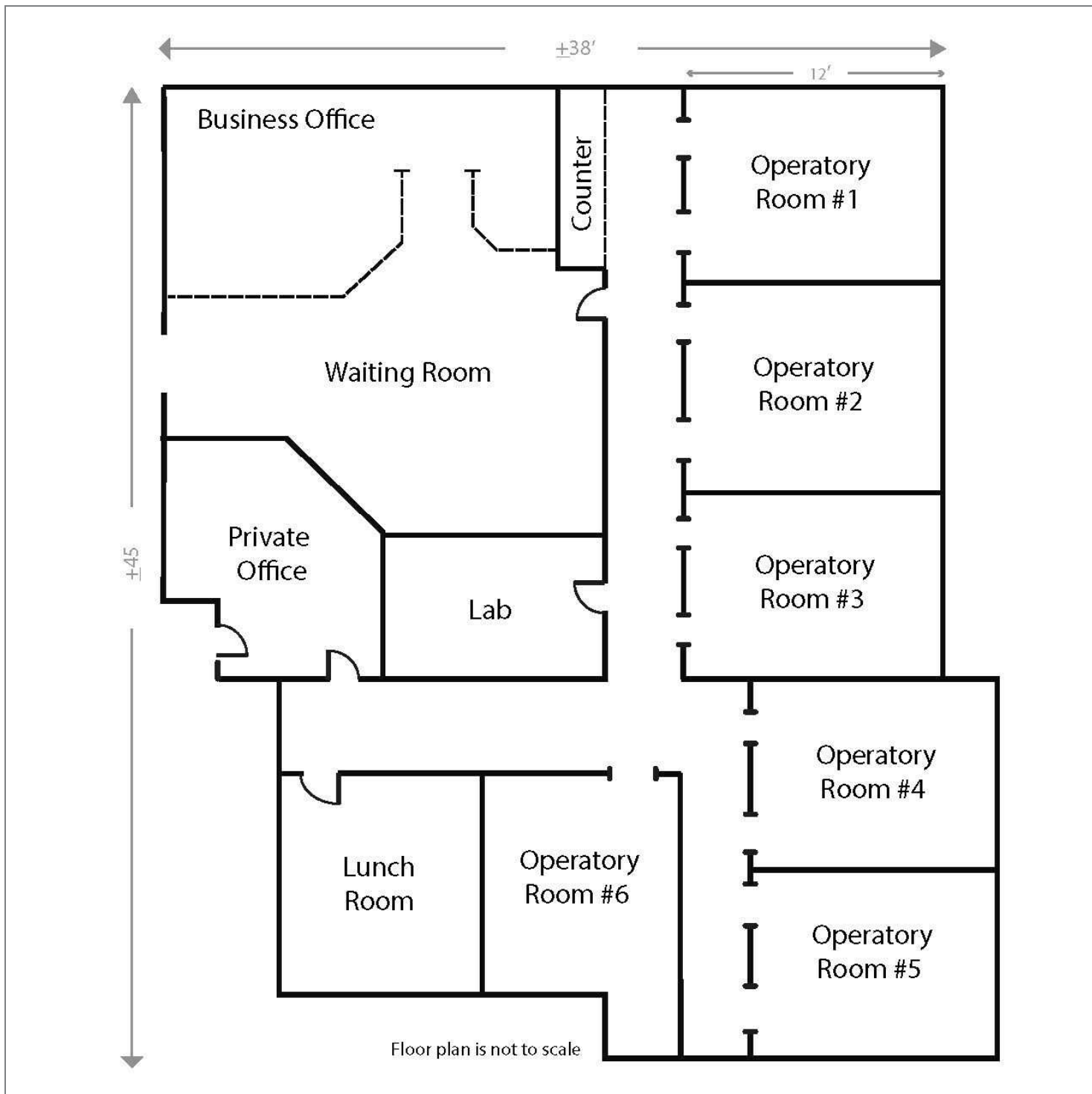
D 206.219.1286

We obtained the information above from sources we believe to be reliable. However, we have not verified its accuracy and make no guarantee, warranty or representation about it. It is submitted subject to the possibility of errors, omissions, change of price, rental or other conditions, prior sale, lease or financing, or withdrawal without notice. We include projections, opinions, assumptions or estimates for example only, and they may not represent current or future performance of the property. You and your tax and legal advisors should conduct your own investigation of the property and transaction.

# Dental Office Condominium for Sale or Lease

## MERIDIAN DENTAL BUILDING

3628 Meridian Street, Suite 2A, Bellingham, WA 98225



### CONTACT

**Jeff Tillman**

[jtillman@lee-associates.com](mailto:jtillman@lee-associates.com)

D 206.219.1286

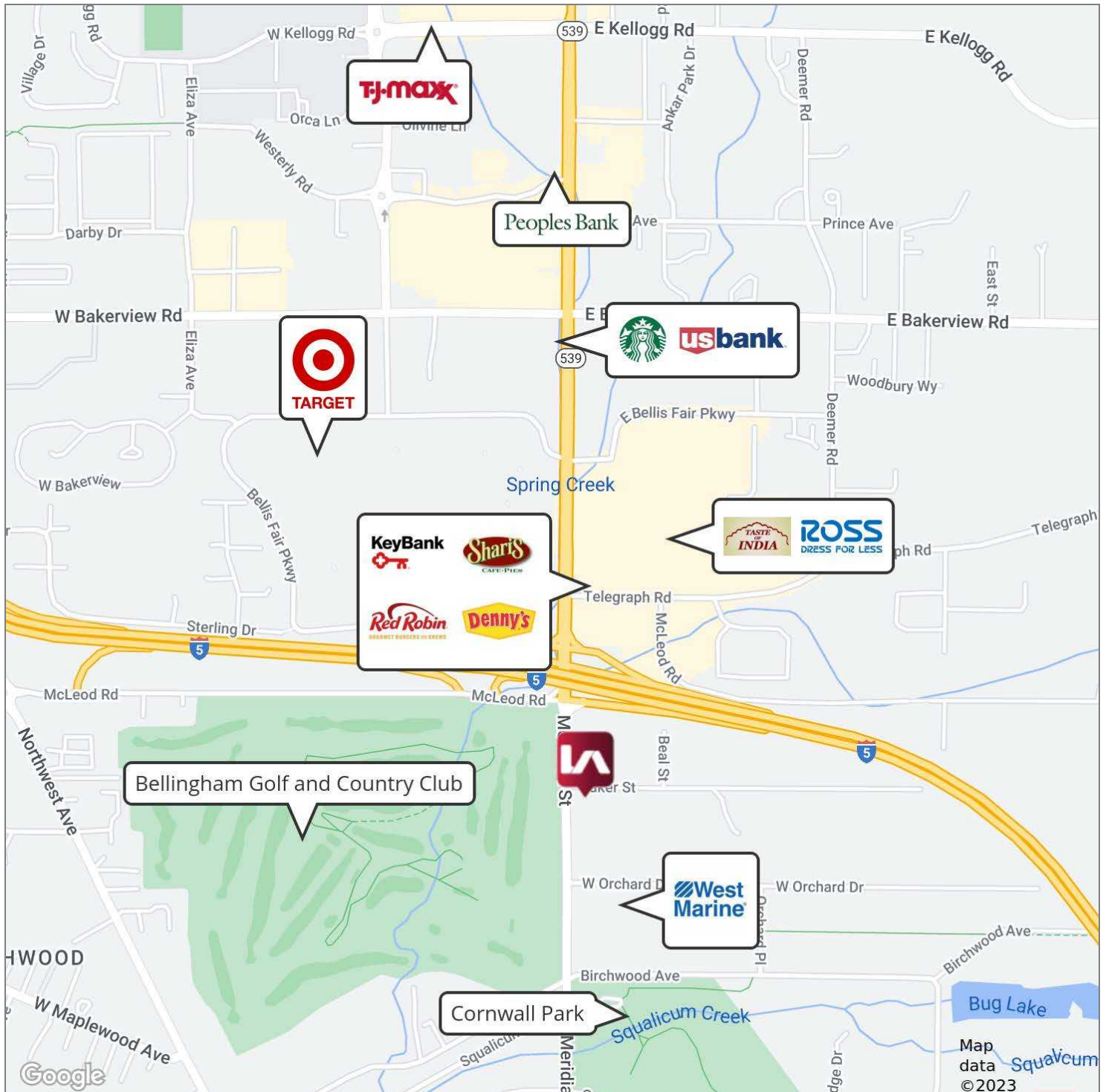
We obtained the information above from sources we believe to be reliable. However, we have not verified its accuracy and make no guarantee, warranty or representation about it. It is submitted subject to the possibility of errors, omissions, change of price, rental or other conditions, prior sale, lease or financing, or withdrawal without notice. We include projections, opinions, assumptions or estimates for example only, and they may not represent current or future performance of the property. You and your tax and legal advisors should conduct your own investigation of the property and transaction.



# Dental Office Condominium for Sale or Lease

## MERIDIAN DENTAL BUILDING

3628 Meridian Street, Suite 2A, Bellingham, WA 98225



### CONTACT

**Jeff Tillman**

[jtillman@lee-associates.com](mailto:jtillman@lee-associates.com)

D 206.219.1286

We obtained the information above from sources we believe to be reliable. However, we have not verified its accuracy and make no guarantee, warranty or representation about it. It is submitted subject to the possibility of errors, omissions, change of price, rental or other conditions, prior sale, lease or financing, or withdrawal without notice. We include projections, opinions, assumptions or estimates for example only, and they may not represent current or future performance of the property. You and your tax and legal advisors should conduct your own investigation of the property and transaction.