



FOR LEASE

Old Towne Plaza

111 TUMWATER BLVD SE, TUMWATER, WA



Starting at \$20.00 PSF, plus NNN

VIBRANT retail/office availabilities adjacent to multiple state agencies in growing area of Tumwater

HIGHLY VISIBLE to all arterial streets

OWNER WILLING to build-to-suit for qualified tenants

AVAILABLE 1,250 SF

DEMOGRAPHICS

2023 Census	1 Mile	3 Miles	5 Miles
Population	4,885	40,545	113,079
Households	2,196	16,618	47,788
Median HH Income	\$72,192	\$16,618	\$108,359
Daytime Employees	320	1,658	5,555

RYAN HADDOCK
360.596.9151
ryan.haddock@kidder.com

OLDTOWNEPLAZATUMWATER.COM
KIDDER.COM

Kidder Mathews

This information supplied herein is from sources we deem reliable. It is provided without any representation, warranty, or guarantee, expressed or implied as to its accuracy. Prospective Buyer or Tenant should conduct an independent investigation and verification of all matters deemed to be material, including, but not limited to, statements of income and expenses. Consult your attorney, accountant, or other professional advisor.

FOR LEASE

Old Towne Plaza

111 TUMWATER BLVD SE, TUMWATER, WA



RYAN HADDOCK
360.596.9151
ryan.haddock@kidder.com

KIDDER.COM OLDTOWNEPLAZATUMWATER.COM

This information supplied herein is from sources we deem reliable. It is provided without any representation, warranty, or guarantee, expressed or implied as to its accuracy. Prospective Buyer or Tenant should conduct an independent investigation and verification of all matters deemed to be material, including, but not limited to, statements of income and expenses. Consult your attorney, accountant, or other professional advisor.

AVAILABILITIES

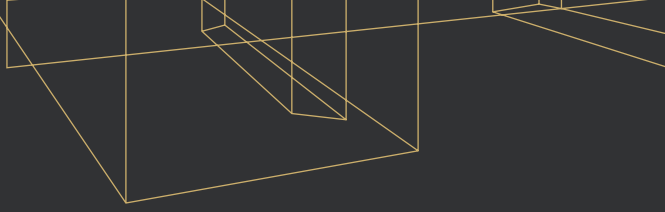
Suite	Tenant/Available	SF±
A109	Northwest Home Team	2,803
A110	Inferno's	4,800
A209	Vision Fitness	8,003
A300	Johnson Bros.	1,494
A301	Dentist	4,098
A302	Symbol Healthcare	1,492
B101/102	Flaming Pigs BBQ	3,539
B104	Academy	1,913
B106	Farmers Insurance	1,186
B107	Meconi's Italian Subs	2,372
B201	Bookkeeping/Accounting	1,200
B202/203	WA Connection Academy	2,813
B205	C.H.I.R.O. Health Center	1,568
B206	Mill Plain Electric	970
B207	South Sound Medical Billing	1,200
C111	Pro Active Sports Medicine	5,835
C116	Lexy's Nails	1,272
C117	Available	1,250
C118	911 Driving School	1,500
C211/212	Olympia Counseling Services	2,232
C213	Bloom and Blossom	1,454
C214	ResCare Inc.	2,800
C216	Lonestar	2,363
D119	Tail Dragger	1,620
D120	Edward Jones	1,080
D121	The Golf Loft	1,500
D122	Niko Teriyaki	1,500



FOR LEASE

Old Towne Plaza

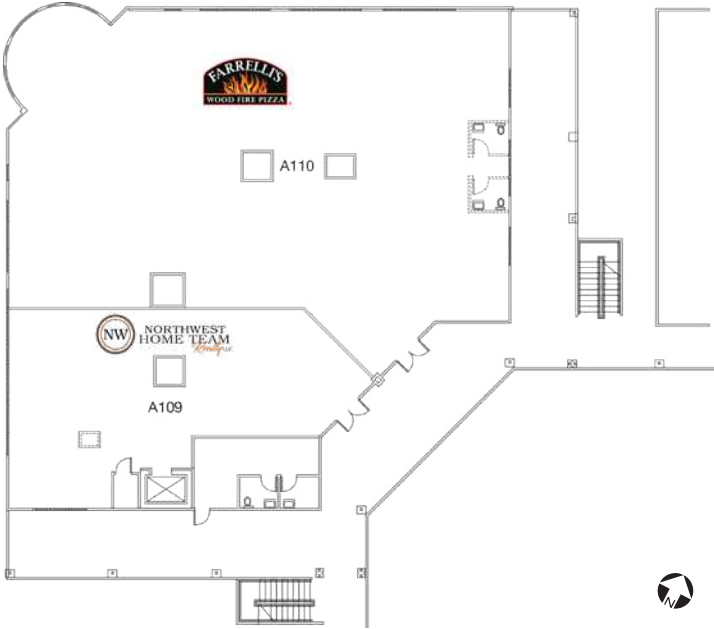
111 TUMWATER BLVD SE, TUMWATER, WA



BUILDING A

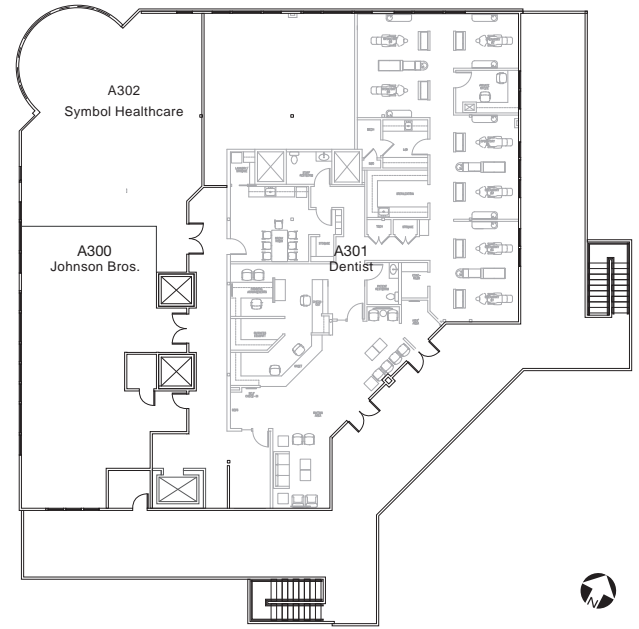
Suites	Tenant/Available	SF±
A109	Northwest Home Team	2,803
A110	Inferno's	4,800
A209	Vision Fitness	8,003
A300	Johnson Bros.	1,494
A301	Dentist	4,098
A302	Symbol Healthcare	1,492

First Floor



THIS FLOOR PLAN IS NOT TO SCALE

Third Floor



THIS FLOOR PLAN IS NOT TO SCALE

RYAN HADDOCK
360.596.9151
ryan.haddock@kidder.com

KIDDER.COM OLDTOWNEPLAZATUMWATER.COM

This information supplied herein is from sources we deem reliable. It is provided without any representation, warranty, or guarantee, expressed or implied as to its accuracy. Prospective Buyer or Tenant should conduct an independent investigation and verification of all matters deemed to be material, including, but not limited to, statements of income and expenses. Consult your attorney, accountant, or other professional advisor.



FOR LEASE

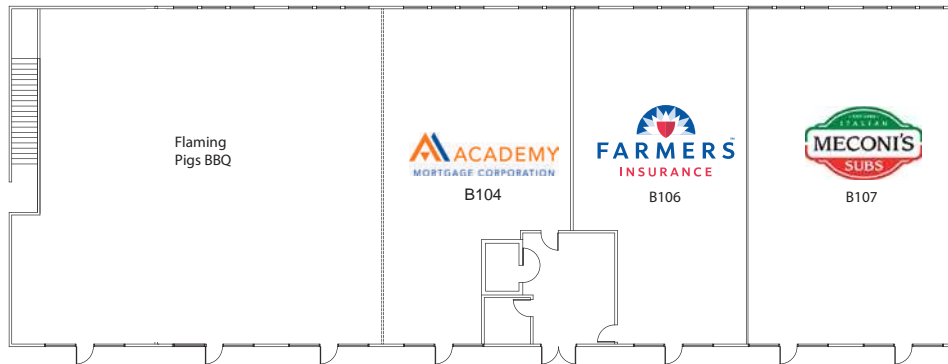
Old Towne Plaza

111 TUMWATER BLVD SE, TUMWATER, WA



BUILDING B

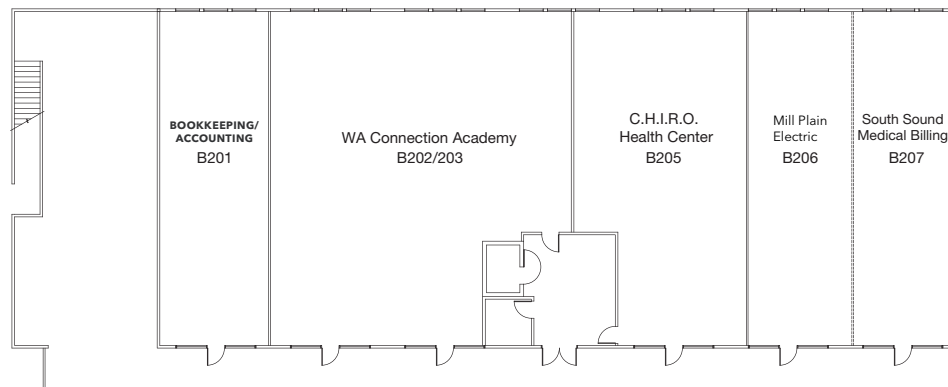
Suites	Tenant/Available	SF±
B101/102	Flaming Pigs BBQ	3,539
B104	Academy	1,913
B106	Farmer's Insurance	1,186
B107	Meconi's Italian Subs	2,372
B201	Bookkeeping/Accounting	1,200
B202/203	WA Connection Academy	2,813
B205	C.H.I.R.O. Health Center	1,568
B206	Mill Plain Electric	970
B207	South Sound Medical Billing	1,200



First Floor



THESE FLOOR PLANS ARE NOT TO SCALE



Second Floor



RYAN HADDOCK

360.596.9151

ryan.haddock@kidder.com

KIDDER.COM OLDTOWNEPLAZATUMWATER.COM

This information supplied herein is from sources we deem reliable. It is provided without any representation, warranty, or guarantee, expressed or implied as to its accuracy. Prospective Buyer or Tenant should conduct an independent investigation and verification of all matters deemed to be material, including, but not limited to, statements of income and expenses. Consult your attorney, accountant, or other professional advisor.



FOR LEASE

Old Towne Plaza

111 TUMWATER BLVD SE, TUMWATER, WA



BUILDING C

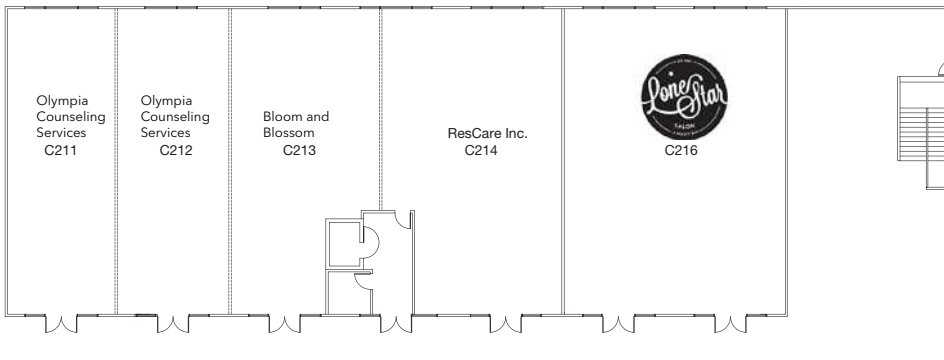
Suites	Tenant/Available	SF±
C111	Pro Active Sports Medicine	5,835
C116	Lexy's Nails	1,272
C117	Available	1,250
C118	911 Driving School	1,500
C211/212	Olympia Counseling Services	2,232
C213	Bloom and Blossom	1,454
C214	ResCare Inc.	2,800
C216	Lonestar	2,363



First Floor



THESE FLOOR PLANS ARE NOT TO SCALE



Second Floor



RYAN HADDOCK
360.596.9151
ryan.haddock@kidder.com

KIDDER.COM OLDTOWNEPLAZATUMWATER.COM

This information supplied herein is from sources we deem reliable. It is provided without any representation, warranty, or guarantee, expressed or implied as to its accuracy. Prospective Buyer or Tenant should conduct an independent investigation and verification of all matters deemed to be material, including, but not limited to, statements of income and expenses. Consult your attorney, accountant, or other professional advisor.



FOR LEASE

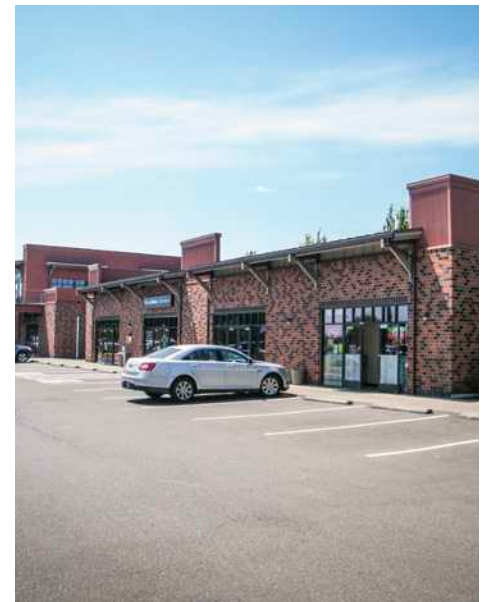
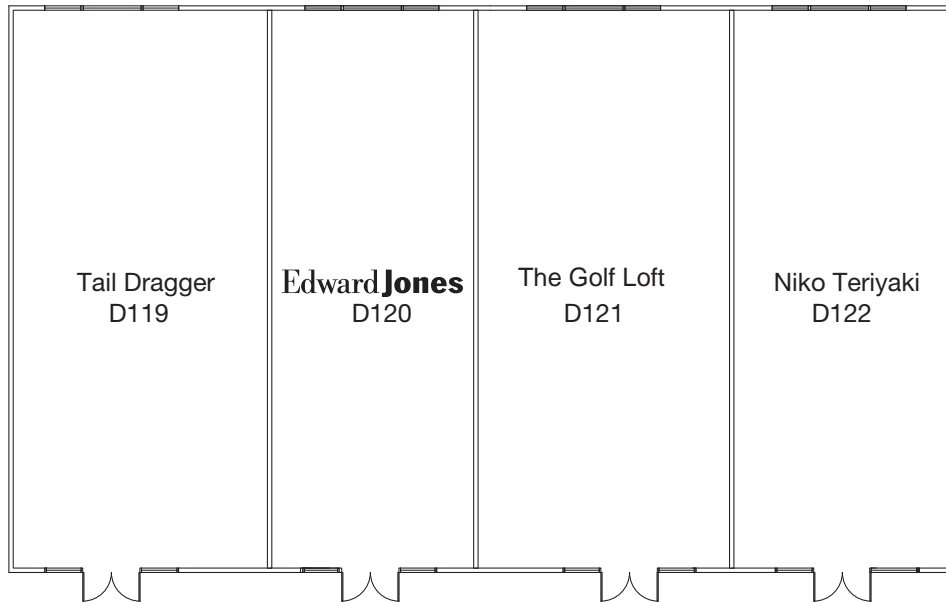
Old Towne Plaza

111 TUMWATER BLVD SE, TUMWATER, WA



BUILDING D

Suites	Tenant/Available	SF±
D119	Tail Dragger	1,620
D120	Edward Jones	1,080
D121	The Golf Loft	1,500
D122	Niko Teriyaki	1,500



THIS FLOOR PLAN IS NOT TO SCALE



RYAN HADDOCK

360.596.9151

ryan.haddock@kidder.com

KIDDER.COM

OLDTOWNEPLAZATUMWATER.COM

This information supplied herein is from sources we deem reliable. It is provided without any representation, warranty, or guarantee, expressed or implied as to its accuracy. Prospective Buyer or Tenant should conduct an independent investigation and verification of all matters deemed to be material, including, but not limited to, statements of income and expenses. Consult your attorney, accountant, or other professional advisor.

