



# Pacific Business Park - Building 4

6852 SOUTH 220TH ST, KENT, WA

## FOR LEASE



Tremendous  
access to I-5 & SR-  
167 via S 212th St

**6,000** SF total

**1,435** SF office

**\$1.25** PSF, shell

**\$1.35** office add-on NNN

**FOUR** dock-high doors

**20'** clear height

**GREAT** parking

**COMCAST** cable available

**AVAILABLE** June 1, 2024

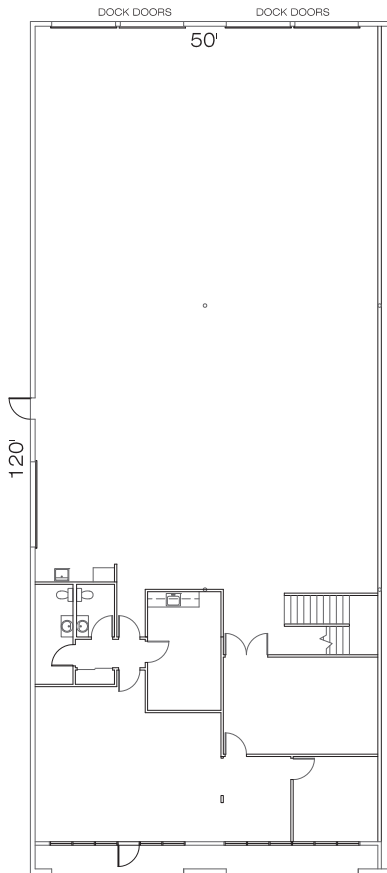
**ONSITE** roaming security guard, with  
patrol car, from 9 PM to 5 AM / 7  
days a week

**FOR LEASE**

# Pacific Business Park - Building 4

6852 SOUTH 220TH ST, KENT, WA

## Floor Plan



**DOUG KLEIN, SIOR**  
Executive Vice President  
206.248.7348  
[doug.klein@kidder.com](mailto:doug.klein@kidder.com)

**KRAIG HEETER, SIOR**  
Executive Vice President  
206.248.7313  
[kraig.heeter@kidder.com](mailto:kraig.heeter@kidder.com)

**KIDDER.COM**

This information supplied herein is from sources we deem reliable. It is provided without any representation, warranty, or guarantee, expressed or implied as to its accuracy. Prospective Buyer or Tenant should conduct an independent investigation and verification of all matters deemed to be material, including, but not limited to, statements of income and expenses. Consult your attorney, accountant, or other professional advisor.

