

TUMWATER, WA

# TUMWATER

CORPORATE CENTER

**FOR LEASE**

**Building 1: 149,340 SF Available**

**Building 2: 199,950 SF Available**

READY FOR OCCUPANCY - CLASS A NEW CONSTRUCTION



### LEASE INFORMATION

	Bldg 1	Bldg 2
Available:	149,340 SF	199,950 SF
Dock Doors:	27	44
Grade Level Doors:	3	4
Parking:	124	115
Trailer Parking:	182	133

### PROPERTY FEATURES

Site Acres:	37.55
Clear Height:	36'
Column Spacing:	50' x 56'
Sprinkler:	ESFR
Warehouse Slab:	7" reinforced
Power:	3000 amp 277/480-volt electrical service
Utility Service:	Puget Sound Energy

### Exclusive Advisors:



**SCOTT PRICE**  
253 779 2419  
sprice@neilwalter.com

**JOEL JONES**  
253 779 2422  
jjones@neilwalter.com

**STEVE SHAUL**  
213 446 7714  
sshaul@crowholdings.com

**PHIL PRASSAS**  
312 952 7314  
pprassas@crowholdings.com

**CROW HOLDINGS**  
INDUSTRIAL

All information references in this document are approximate. The information contained herein is contained from sources deemed reliable. It is provided without representation, warranty, or guarantee, expressed or implied as to accuracy. Prospective buyer or tenant should conduct its own independent investigation relating to the property, government codes and regulations, allowed uses, and all other matters, regardless of whether they are referred to or contained in this document.

TUMWATER, WA

# TUMWATER

CORPORATE CENTER

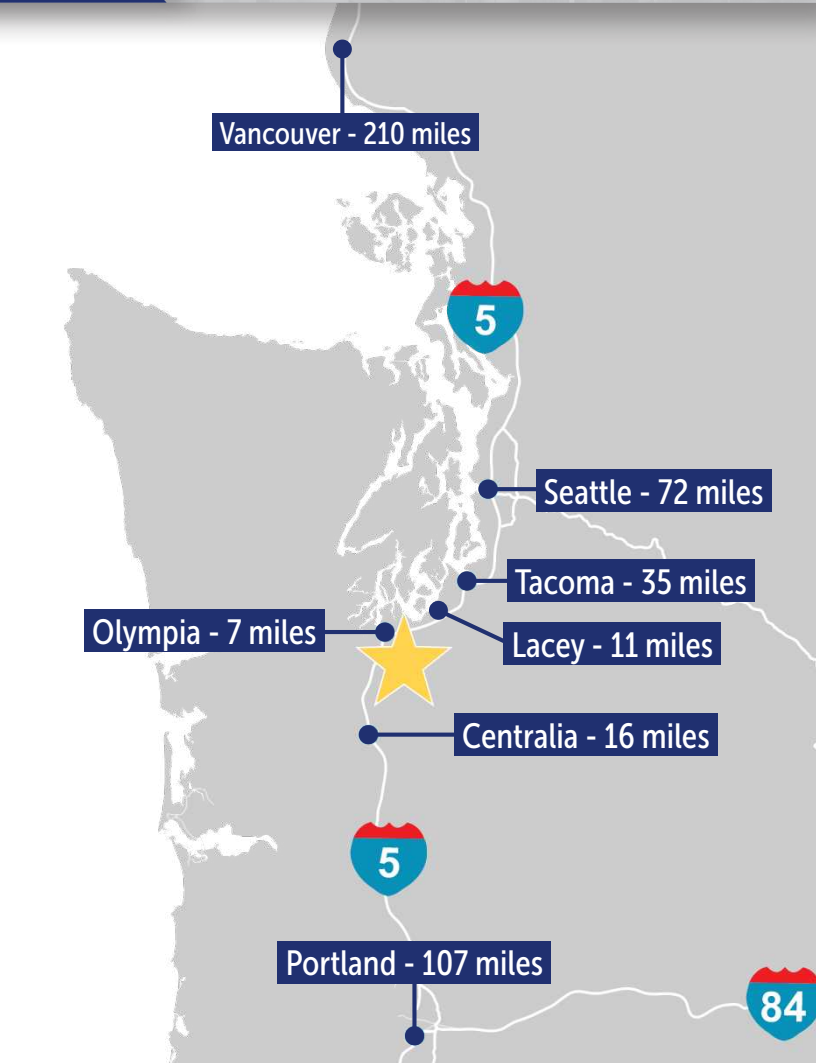
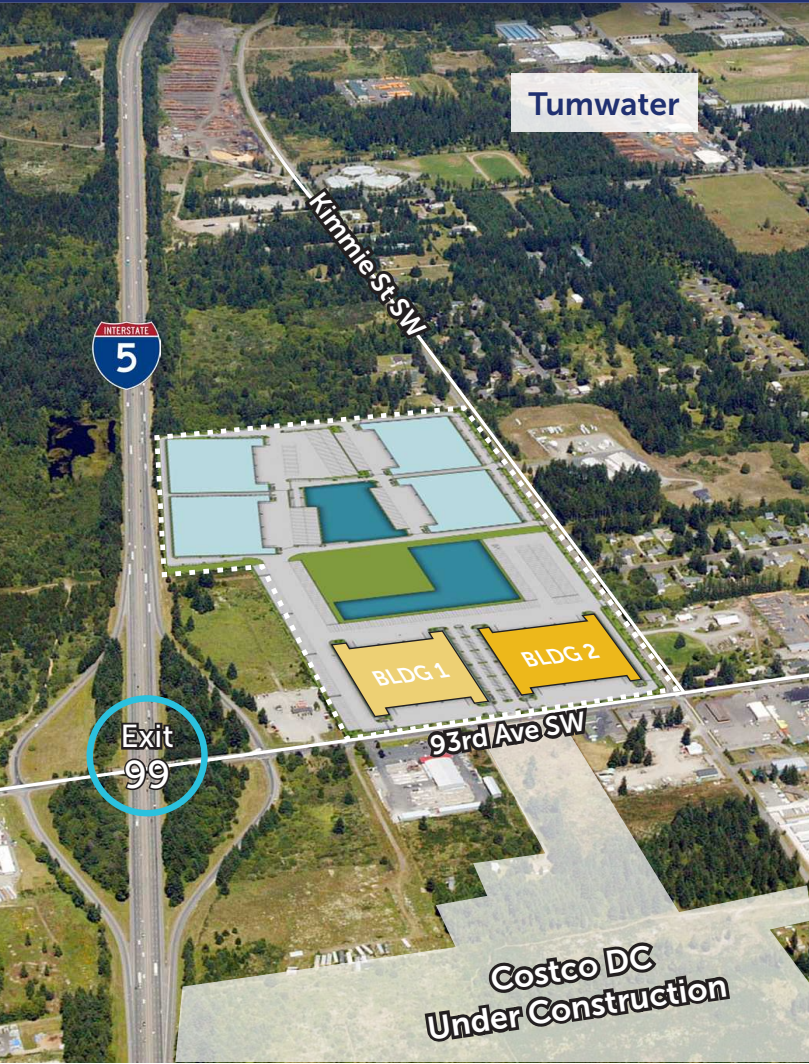




TUMWATER, WA

# TUMWATER

CORPORATE CENTER



## NEIGHBORING BUSINESSES:



## Exclusive Advisors:



SCOTT PRICE  
253 779 2419  
sprice@neilwalter.com

JOEL JONES  
253 779 2422  
jjones@neilwalter.com

STEVE SHAUL  
213 446 7714  
sshaul@crowholdings.com

PHIL PRASSAS  
312 952 7314  
pprassas@crowholdings.com

CROW HOLDINGS  
INDUSTRIAL

All information references in this document are approximate. The information contained herein is contained from sources deemed reliable. It is provided without representation, warranty, or guarantee, expressed or implied as to accuracy. Prospective buyer or tenant should conduct its own independent investigation relating to the property, government codes and regulations, allowed uses, and all other matters, regardless of whether they are referred to or contained in this document.